

Virtual Public Involvement Presentation Handout

**WIS 46
Cylon – Amery
WIS 64 to Snow Street
Polk and St. Croix counties
Project ID 8072-00-00/70/71**



Virtual Presentation

November 2020

Rather than holding an in-person meeting, public involvement efforts have moved online as a precaution against COVID-19 based on the most current health information from state, federal and local health departments.

The Wisconsin Department of Transportation continues to review prioritization and potential alternatives for public meetings and events.

This handout and other meeting items are available on the design website at:

<https://wisconsindot.gov/Pages/projects/by-region/nw/wis46cylonamery/default.aspx>

Thank you for your interest in this project; we look forward to your feedback.

Purpose of the presentation

The purpose of this presentation is for the Wisconsin Department of Transportation (WisDOT) and KL Engineering to present the proposed project improvements to rehabilitate WIS 46 between Cylon and Amery in Polk and St. Croix counties.

Purpose and need for the roadway improvements

The primary project purpose of these projects is improving the condition of the pavement on WIS 46 to provide motorists with a highway that meets safety standards.

The project need is defined by the improvements that must be made to the highway to address its deteriorated condition. In its current state, existing pavement on WIS 46 exhibits signs of deterioration in the form of alligator, longitudinal and transverse cracking and rutting in vehicle wheel paths. To meet the project need, a proposed solution must attempt to correct these key issues.

If no action is taken, the pavement conditions will likely worsen and may require complete reconstruction. The WIS 46 pavement was last resurfaced in 2001.

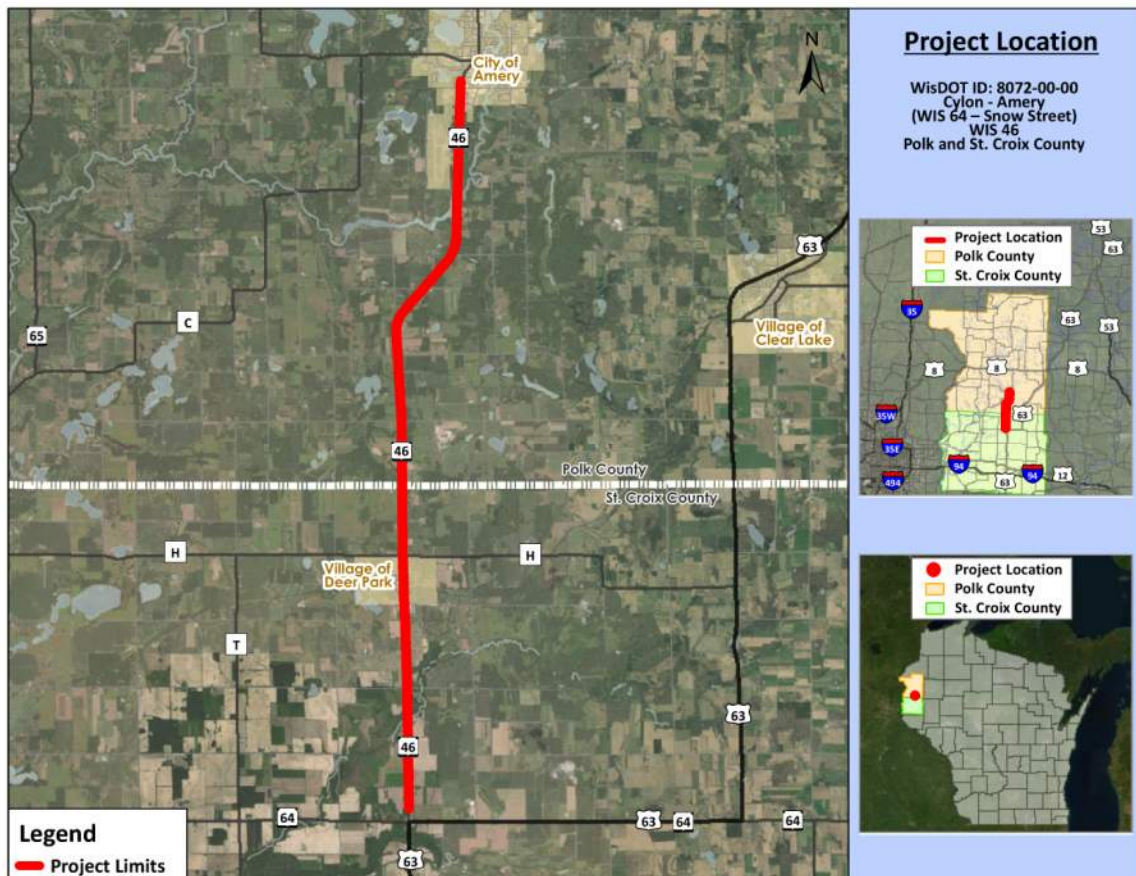
Project location

The project will be on WIS 46 between Cylon and Amery in Polk and St. Croix counties.

Recommended improvements

The project will consist of the following:

- Resurface WIS 46 by milling the existing pavement and overlaying with asphalt pavement
- Rehabilitate culverts along the entire length of the project
- Replace safety beam guard along the entire length of the project
- Widen the paved shoulders and install rumble strips along the entire length of the project
- Replace pavement marking



Real estate

Temporary easements will be required for culvert and drainage improvements along the project.

Proposed traffic impacts

Construction of WIS 46 is scheduled to start in 2022 and is anticipated to take one construction season (May through August). During construction WIS 46 will remain open to traffic and be constructed with single-lane closures through flagging operations.

Project Schedule

Preliminary Plans	May 2020
Environmental Document	May 2020
Real Estate Plat	June 2020
Public Involvement Virtual Presentation	November 2020
Final Plans	August 2021
Construction	Summer 2022

Project website Information

Information for this presentation will be placed on the WisDOT website at the following location:

<https://wisconsin.gov/Pages/projects/by-region/nw/wis46cylonamery/default.aspx>

Public input/comments

Your comments assist us in developing a project that will serve the needs of the traveling public as well as the needs of the local community. Your input is welcome and appreciated throughout the design process. We encourage you to talk to the project representatives and ask them questions. Please forward your comments/input by **Dec. 11, 2020**:

1. Fill out the comment form attached to this document
2. Or email comments or questions to the contacts listed below

Jessica Bowker
WisDOT Project Manager
718 W. Clairemont Ave.
Eau Claire, WI 54701
(715) 577-2963
jessica.bowker@dot.wi.gov

Brad Halvensleben, PE
KL Engineering Project Manager
5400 King James Way, Suite 200
Madison, WI 53719
(608) 663-1218
bhalvensleben@klengineering.com

Fold here

Place
Stamp
Here

WisDOT Northwest Region – Eau Claire Office
718 W. Clairemont Ave.
Eau Claire, WI 54701
Attn: Jessica Bowker

To mail, fold here and tape.