



Melrose – Black River Falls

Roaring Creek B-27-0076, Douglas Creek B-27-0016

WIS 54

Jackson County

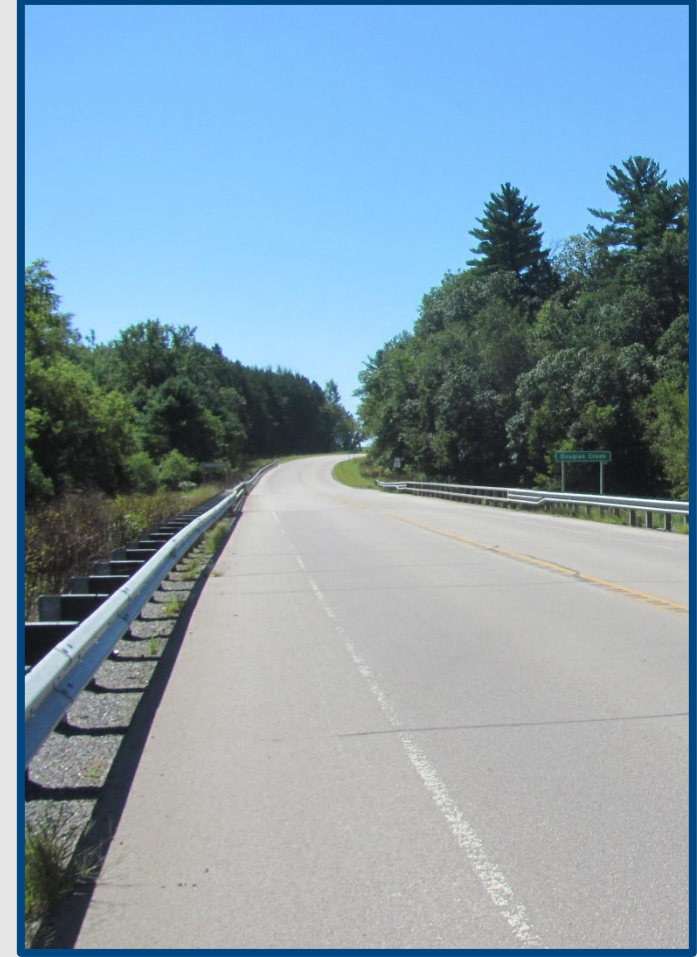
Wisconsin Department of Transportation

Public Involvement Presentation

August 2023

Presentation Agenda

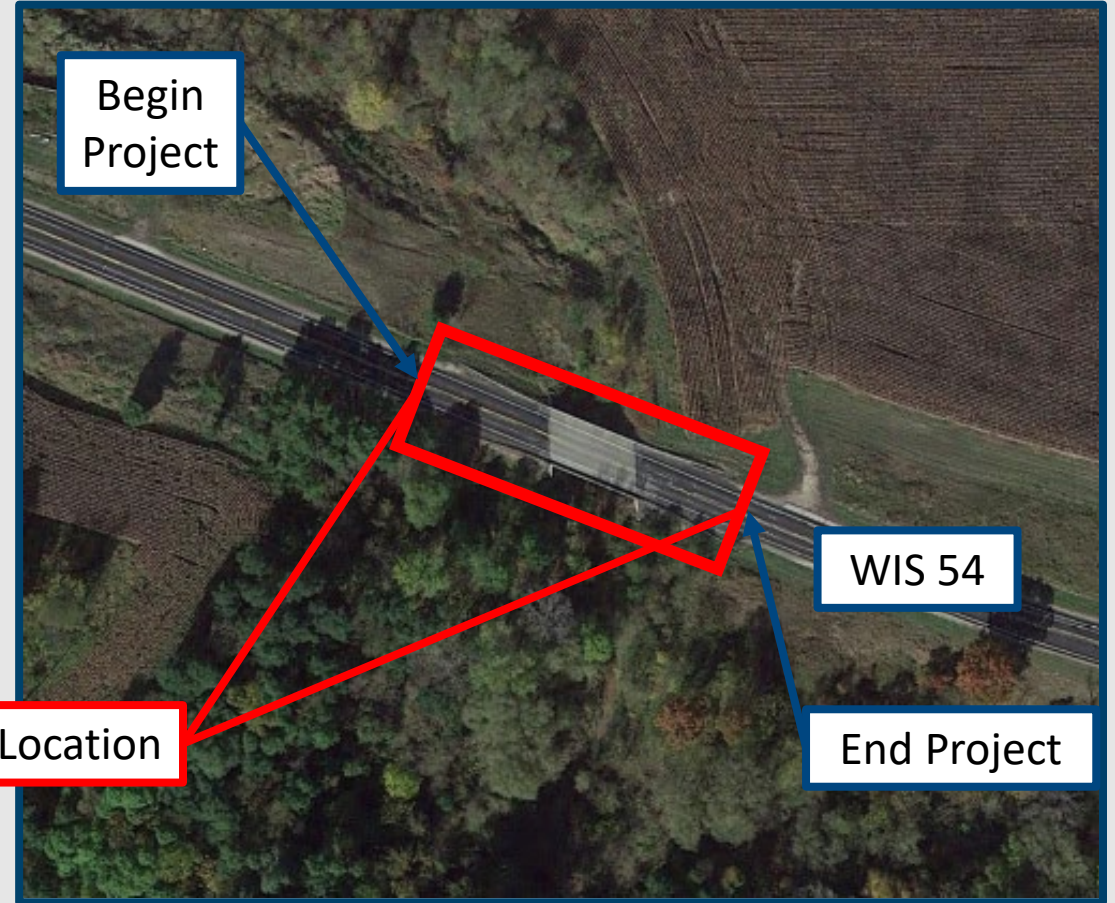
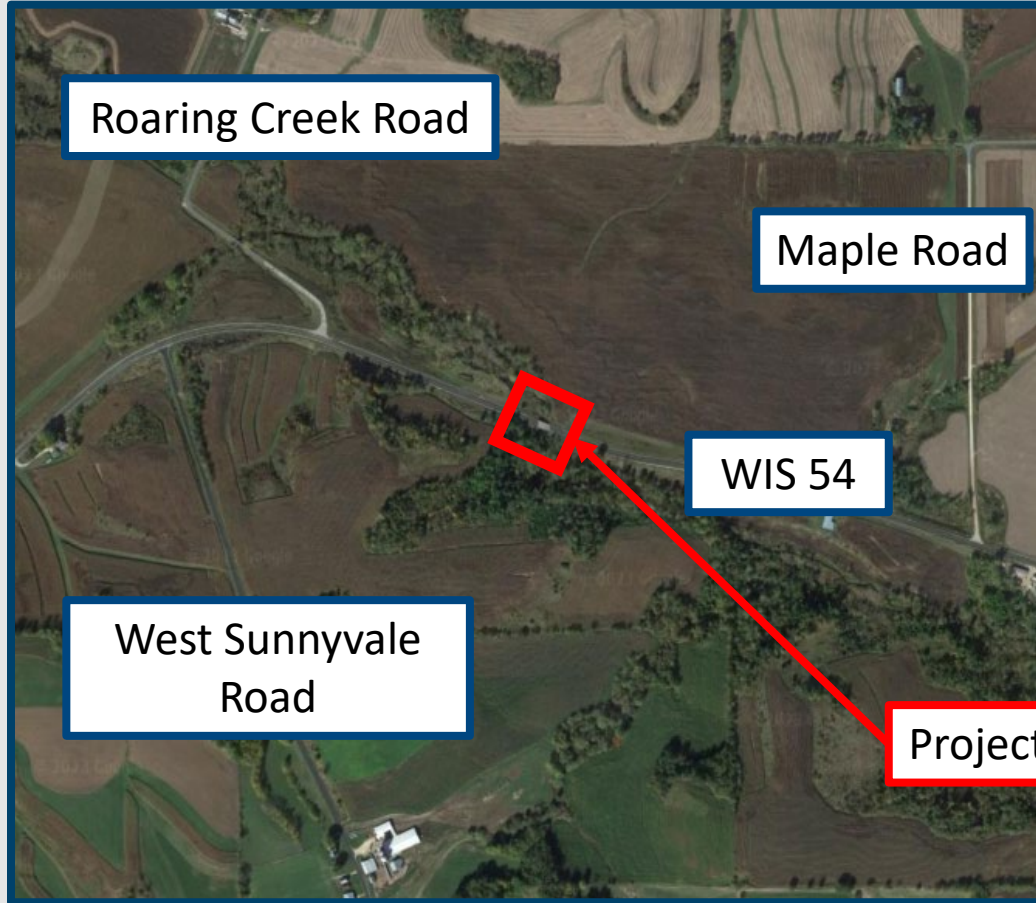
- Project Limits
- Project Need
- Proposed Improvements
- Traffic Control
- Schedule
- Project Contacts





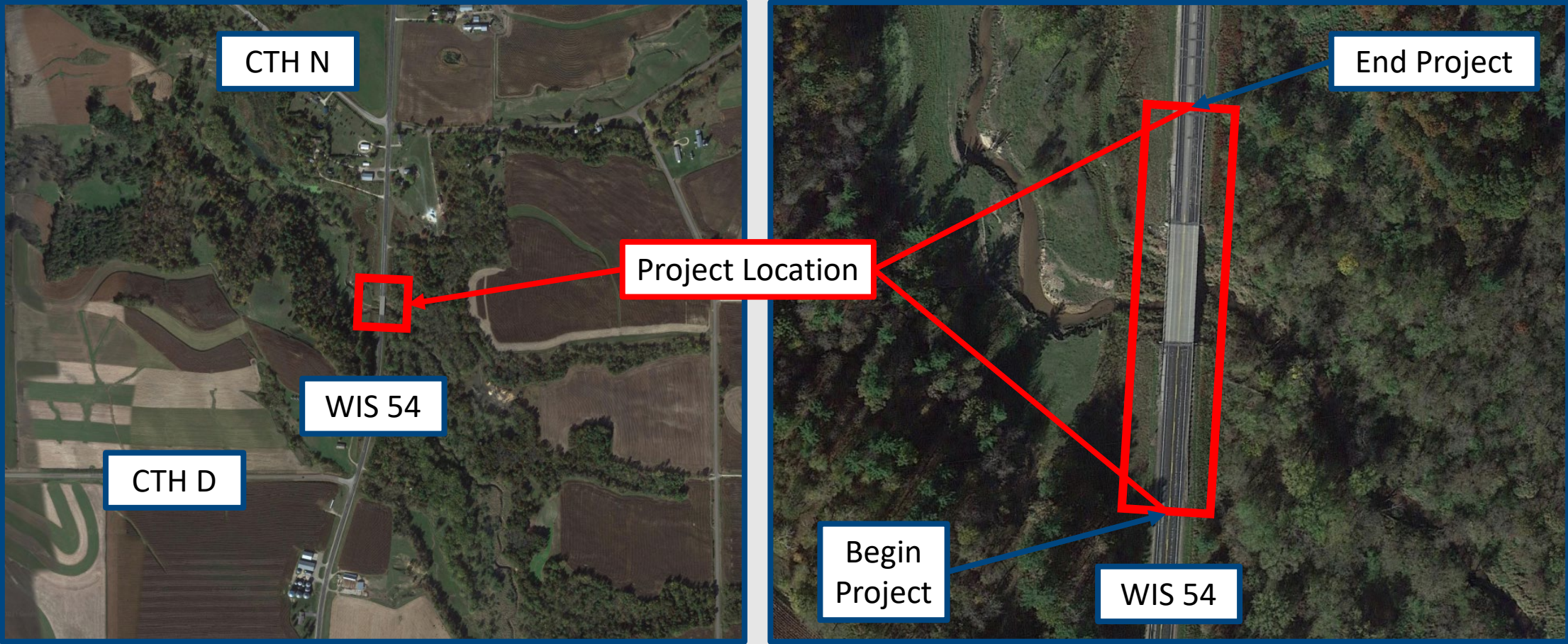
Project Limits

B-27-0076



Project Limits

B-27-0016



Project Need

Structure Deterioration – B-27-0076



- Single-span prestressed concrete deck girder structure
- Length: 70.3 feet
- Clear roadway width: 38 feet
- Sufficiency rating: 93.2
- Built: 1986

Project Need

Concrete Deck Deterioration – B-27-0076



- Reinforced concrete deck
 - Wearing
 - Cracking
 - Spalling
 - Exposed reinforcing steel

Project Need

Structure Deterioration – B-27-0016



- Three-span steel deck girder structure
- Length: 147 feet
- Clear roadway width: 35 feet
- Sufficiency rating: 86.2
- Built: 1955

Project Need

Concrete Deck Deterioration – B-27-0016



- Reinforced concrete deck
 - Spalling
 - Exposed reinforcing steel
 - Cracking

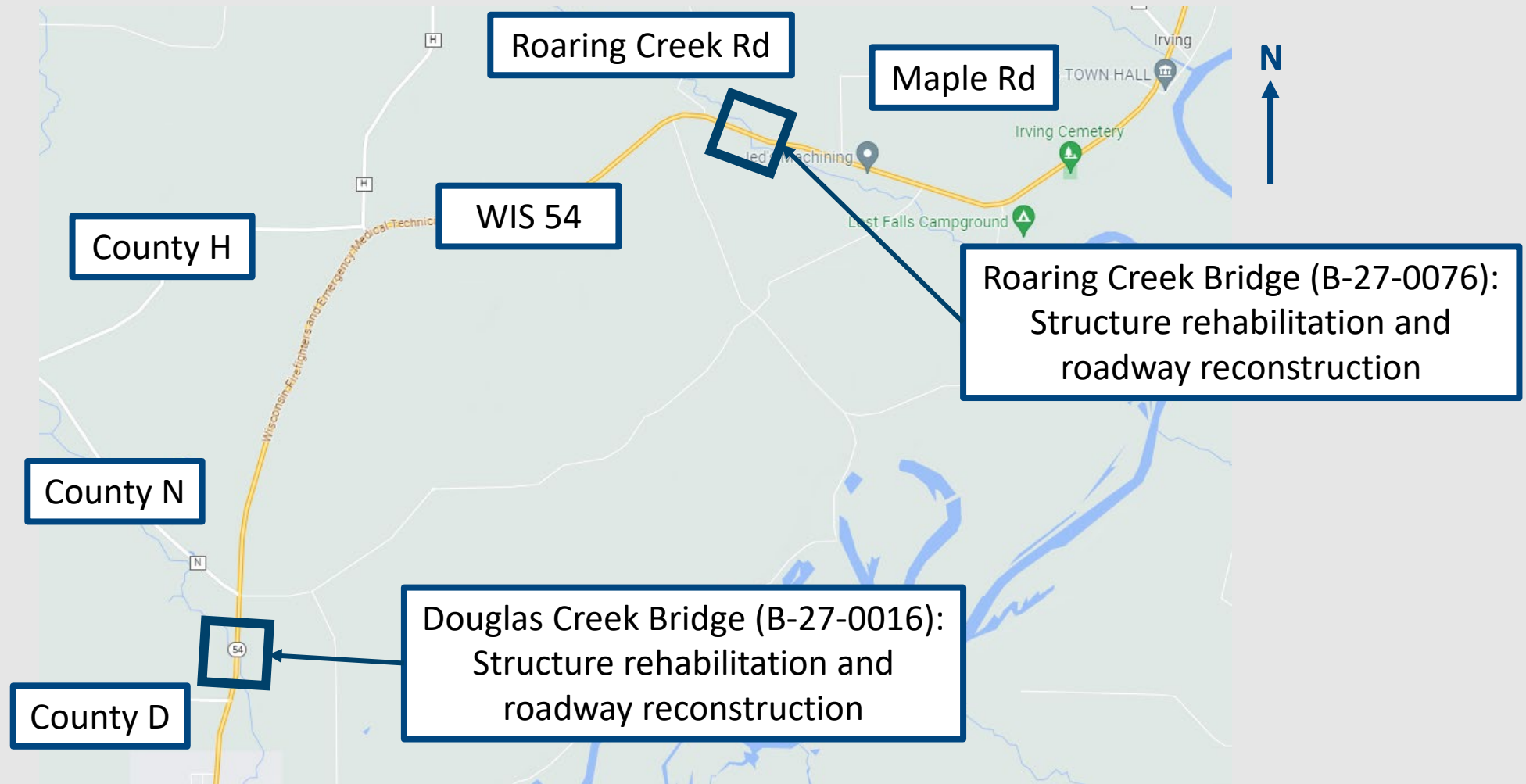
Project Need

Substructure Deterioration – B-27-0016



- Concrete abutments
 - Spalling
 - Exposed reinforcing steel

Proposed Improvements



Proposed Improvements

Rehabilitate Structure B-27-0076

- Replace the concrete deck
- Add concrete approach slabs
- Add riprap between abutments and stream edge
- Replace metal bridge rail with concrete parapets
- Replace guardrail and asphaltic flumes at all four quadrants of the structure



Proposed Improvements

Rehabilitate Structure B-27-0016

- Replace the concrete deck
- Complete surface repair of abutments and concrete caps
- Clean and paint bearings
- Install stainless steel flashing along edge of new concrete deck



Proposed Improvements

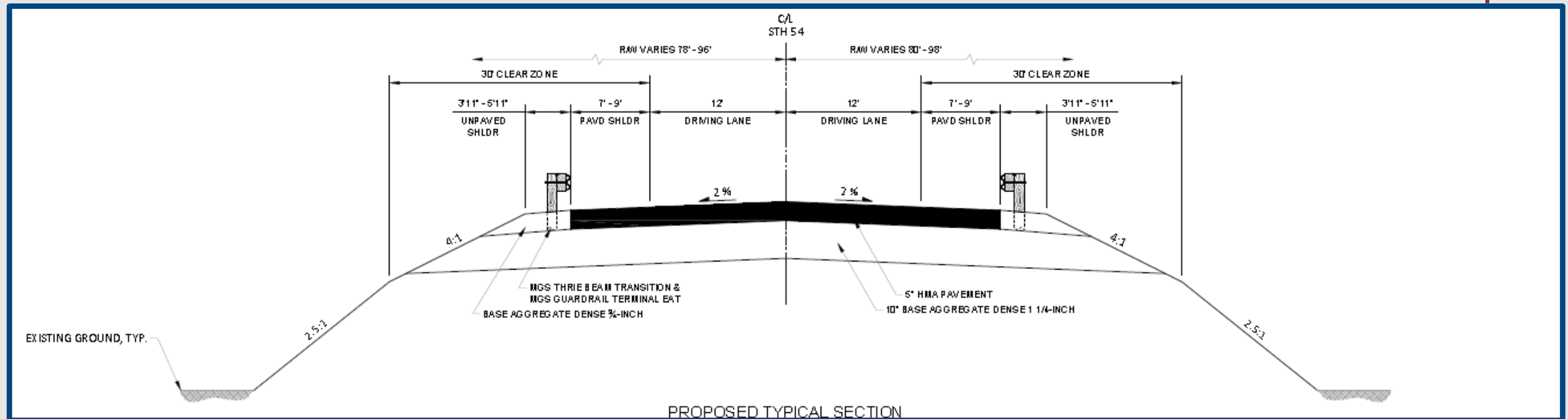
Typical Section – WIS 54 – B-27-0076

- Pavement

- Pave 5 inches of asphaltic surface over 10 inches of base aggregate dense

- Shoulders

- 7-9 feet paved
- 3'11"-5'11" unpaved



Proposed Improvements

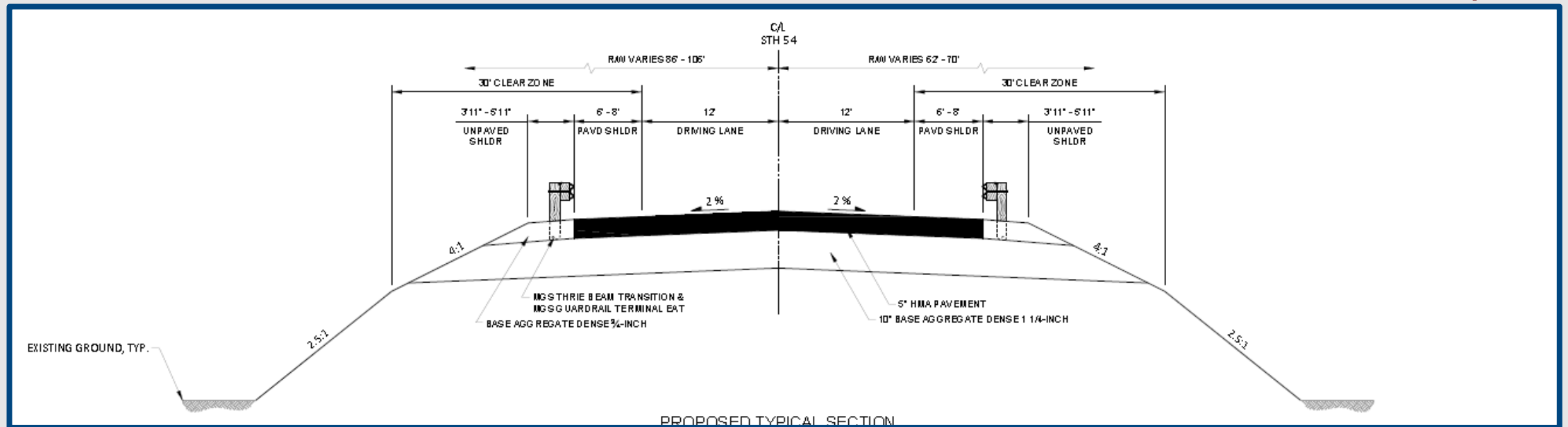
Typical Section – WIS 54 – B-27-0016

- Pavement

- Pave 5 inches of asphaltic surface over 10 inches of base aggregate dense

- Shoulders

- 6-8 feet paved
- 3'11"-5'11" unpaved



Traffic Control

- During construction:
 - WIS 54 will be closed to through traffic.
 - Traffic will be detoured via WIS 71 to WIS 27.
 - Access to properties in the project limits will be maintained.



Schedule

- Public comment solicitation: August 2023
- Final plan submittal: Sept. 1, 2025
- Bid solicitation: Nov. 10, 2026
- Construction: Spring 2027





Project Contacts

Nathan Ulness, P.E.

WisDOT Project Manager
nathan.ulness@dot.wi.gov
(715) 836-3914

Erik Meyer, P.E.

Consultant Project Engineer
emeyer@westbrookeng.com
(608) 588-7866

Project Website

<https://wisconsindot.gov/Pages/projects/by-region/nw/wis54bridges/default.aspx>

