

# **Project: 7105-00-04/74 (WIS 72)**

## **Ellsworth - Downsville**

**Lance Williston**

**WisDOT- Project Manager**

Public Information Meeting  
Dunn County

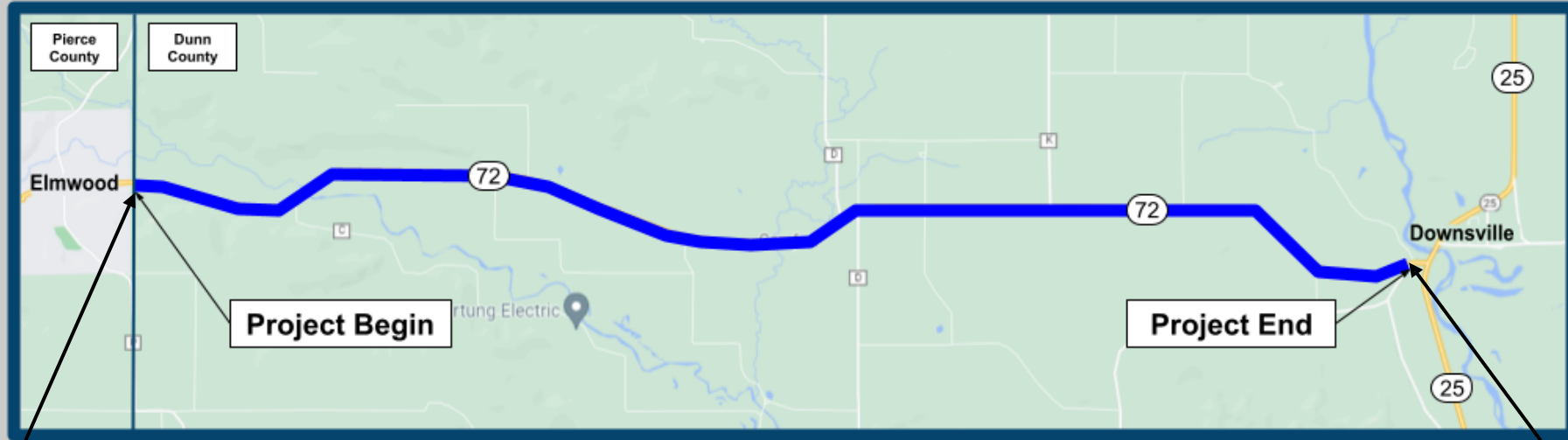
**October 2022**

# Agenda

- Project Location
- Purpose and Need
- Proposed Improvements
- Traffic Control
- Schedule
- Project Contacts



# Project Location



Pierce/Dunn County line



WIS 25, between County Z and 440<sup>th</sup> Street



# Purpose and Need

## Pavement Deterioration





# Purpose and Need

## Safety

- Replace/adjust guardrail to meet current standards





# Purpose and Need

## Safety

- Deteriorating features on several structures warrant attention to ensure they realize their service lives



# Proposed Improvements

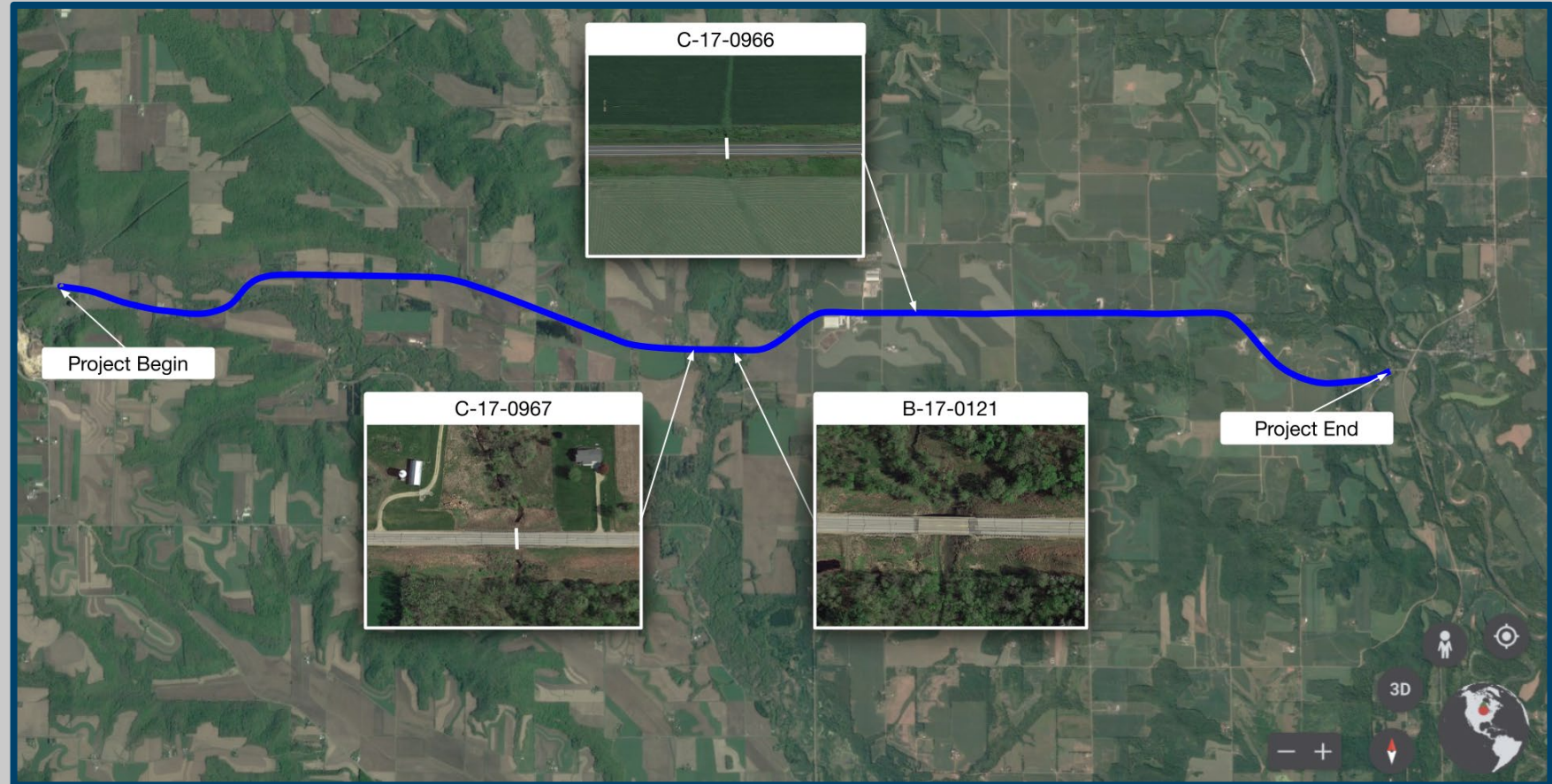
- Remove top 2.25" of pavement
- 3.25" asphaltic pavement overlay
- Updating guardrail
- Rehabilitating deteriorated structural elements





# Proposed Improvements

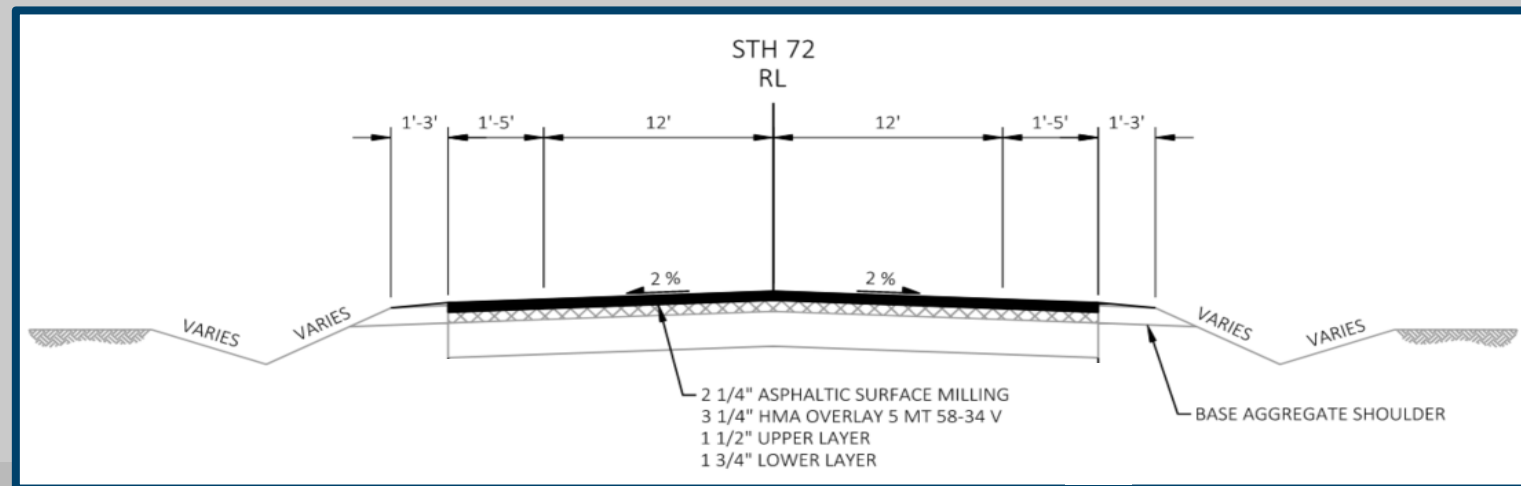
- Mill and overlay 10.1 miles
- Make repairs to three structures
- Update guardrail





# Proposed Improvements

- Pavement
  - Remove 2.25 inches and place 3.25 inches of hot-mix asphalt
- Shoulders
  - Pave 1 to 5 feet
  - Include 1 to 3 feet unpaved



# Proposed Improvements

## Structure C-17-0966

- Location
  - 0.71 mile west of County K
- Proposed work:
  - Seal construction joints





# Proposed Improvements

## Structure C-17-0967

- Location:
  - 0.79 mile west of County D
- Proposed work:
  - Add riprap



# Proposed Improvements

## Structure B-17-0121

- Location:
  - 0.55 mile west of County Road D
- Proposed work:
  - Replace all four wing walls



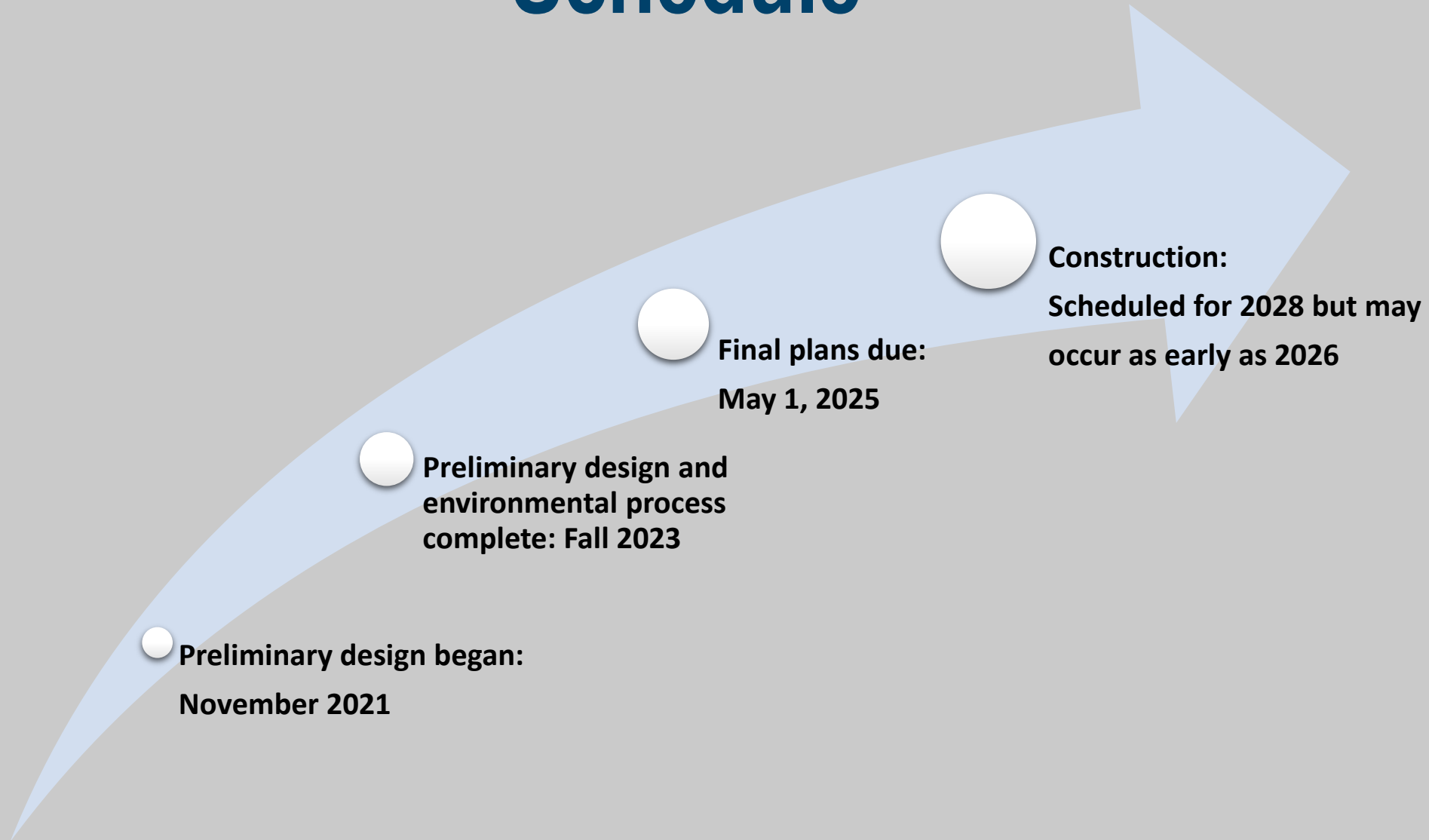


# Traffic Control

- WIS 72 will remain open to through traffic, but motorists can expect:
  - Temporary lane closures controlled by flaggers during roadway improvements
  - Single-lane closures utilizing stop signs during bridge and culvert improvements
  - Access to properties and businesses to be maintained



# Schedule





# Project Contacts

## Kevin Meyer, PE

Consultant Project Manager

CORRE, Inc.

1802 Warden St.

Eau Claire, WI 54703

[kmeyer@correinc.com](mailto:kmeyer@correinc.com)

(715) 299-1894

## Lance Williston, PE

WisDOT Consultant Project Manager

KL Engineering

5400 King James Way, No. 200

Fitchburg, WI 53719

[lwilliston@klengineering.com](mailto:lwilliston@klengineering.com)

(608) 663-1218, ext. 809

