

PROJECT 1100-01-77 (IH 41 - BURLEIGH STREET TO GOOD HOPE ROAD)

Notes:

- The information about the traffic control is preliminary and is subject to change.
- Consecutive ramps along the corridor will not be closed at the same time.

BURLEIGH ST

CAPITOL DR
(STH 190)

HAMPTON AVE
(CTH EE)



Type of Work

Rehabilitation of the Southbound Exit Ramp.

Traffic Control

Ramp will be closed for approximately 2 weeks.

Type of Work

- Rehabilitation of the Northbound Exit Ramp and Southbound Ramps.
- Rehabilitation of the Middle Level Ramps (East-West Ramps).
- Concrete Overlay of the bridges in the Middle Level.
- Painting of the Top Level (freeway) bridges.

Traffic Control

- The Northbound Exit Ramp and the SB Ramps will be fully closed for approximately 2 weeks.
- The through movements at the Middle Level Ramps (East-West direction) will be open for the majority of the construction. This will accommodate the original bus routes.
- The left turning movements from the Middle Level Ramps (East-West Ramps) to the freeway Entrance Ramps will be fully closed during construction.
- The overall duration of the construction is approximately 3-4 months.

Type of Work

- Rehabilitation of the Northbound Exit Ramp and Southbound Ramps.
- Curb ramp updates at the at the ramp terminals.

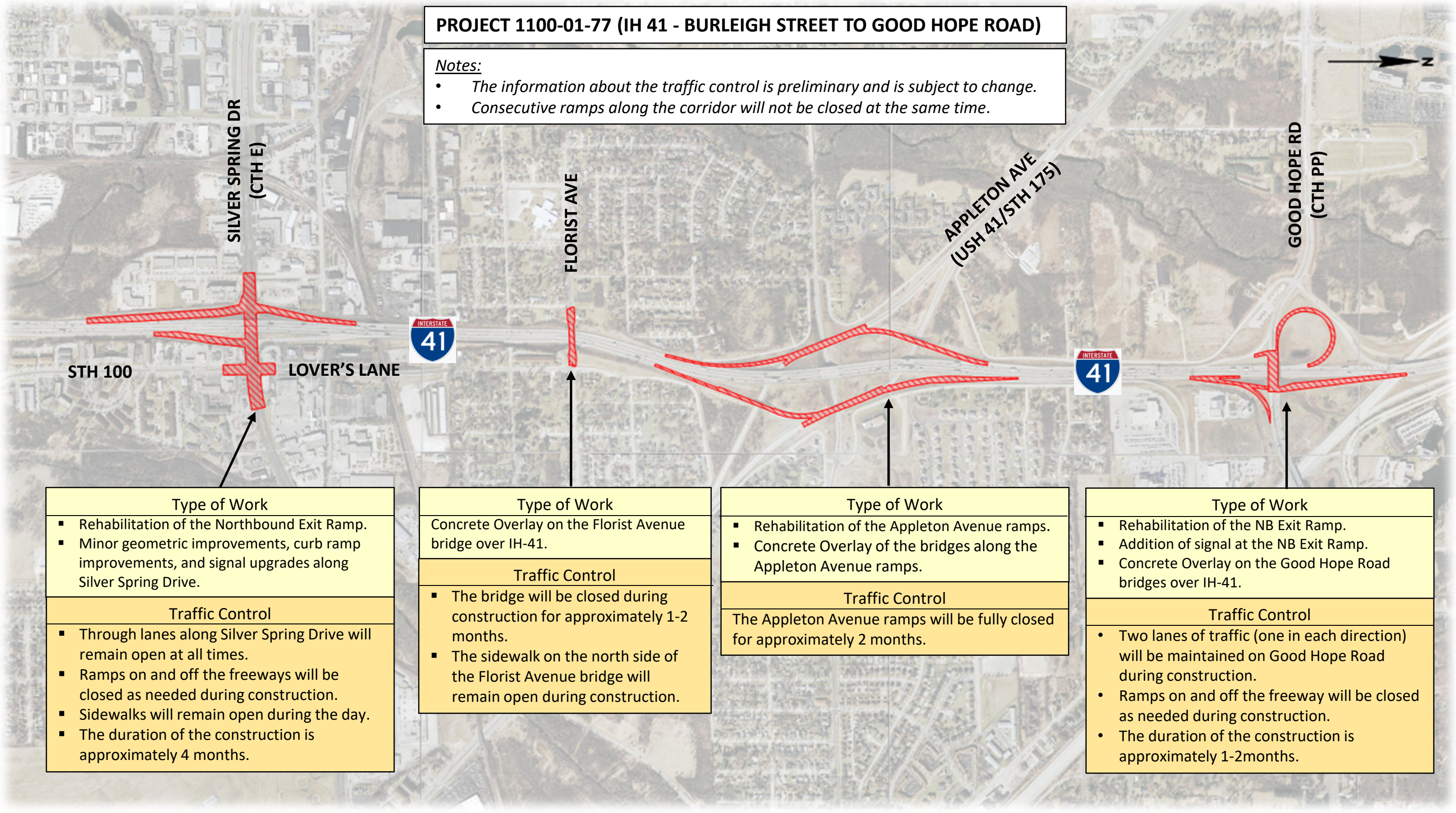
Traffic Control

- Ramps will be closed for approximately 2 weeks.
- Pedestrian accommodations will be maintained during construction.

PROJECT 1100-01-77 (IH 41 - BURLEIGH STREET TO GOOD HOPE ROAD)

Notes:

- The information about the traffic control is preliminary and is subject to change.
- Consecutive ramps along the corridor will not be closed at the same time.



STH 100

SILVER SPRING DR
(CTH E)

LOVER'S LANE

FLORIST AVE

APPLETON AVE
(USH 41/STH 175)

GOOD HOPE RD
(CTH PP)



Type of Work
<ul style="list-style-type: none">▪ Rehabilitation of the Northbound Exit Ramp.▪ Minor geometric improvements, curb ramp improvements, and signal upgrades along Silver Spring Drive.
Traffic Control
<ul style="list-style-type: none">▪ Through lanes along Silver Spring Drive will remain open at all times.▪ Ramps on and off the freeways will be closed as needed during construction.▪ Sidewalks will remain open during the day.▪ The duration of the construction is approximately 4 months.

Type of Work
Concrete Overlay on the Florist Avenue bridge over IH-41.
Traffic Control
<ul style="list-style-type: none">▪ The bridge will be closed during construction for approximately 1-2 months.▪ The sidewalk on the north side of the Florist Avenue bridge will remain open during construction.

Type of Work
<ul style="list-style-type: none">▪ Rehabilitation of the Appleton Avenue ramps.▪ Concrete Overlay of the bridges along the Appleton Avenue ramps.
Traffic Control
The Appleton Avenue ramps will be fully closed for approximately 2 months.

Type of Work
<ul style="list-style-type: none">▪ Rehabilitation of the NB Exit Ramp.▪ Addition of signal at the NB Exit Ramp.▪ Concrete Overlay on the Good Hope Road bridges over IH-41.
Traffic Control
<ul style="list-style-type: none">• Two lanes of traffic (one in each direction) will be maintained on Good Hope Road during construction.• Ramps on and off the freeway will be closed as needed during construction.• The duration of the construction is approximately 1-2 months.