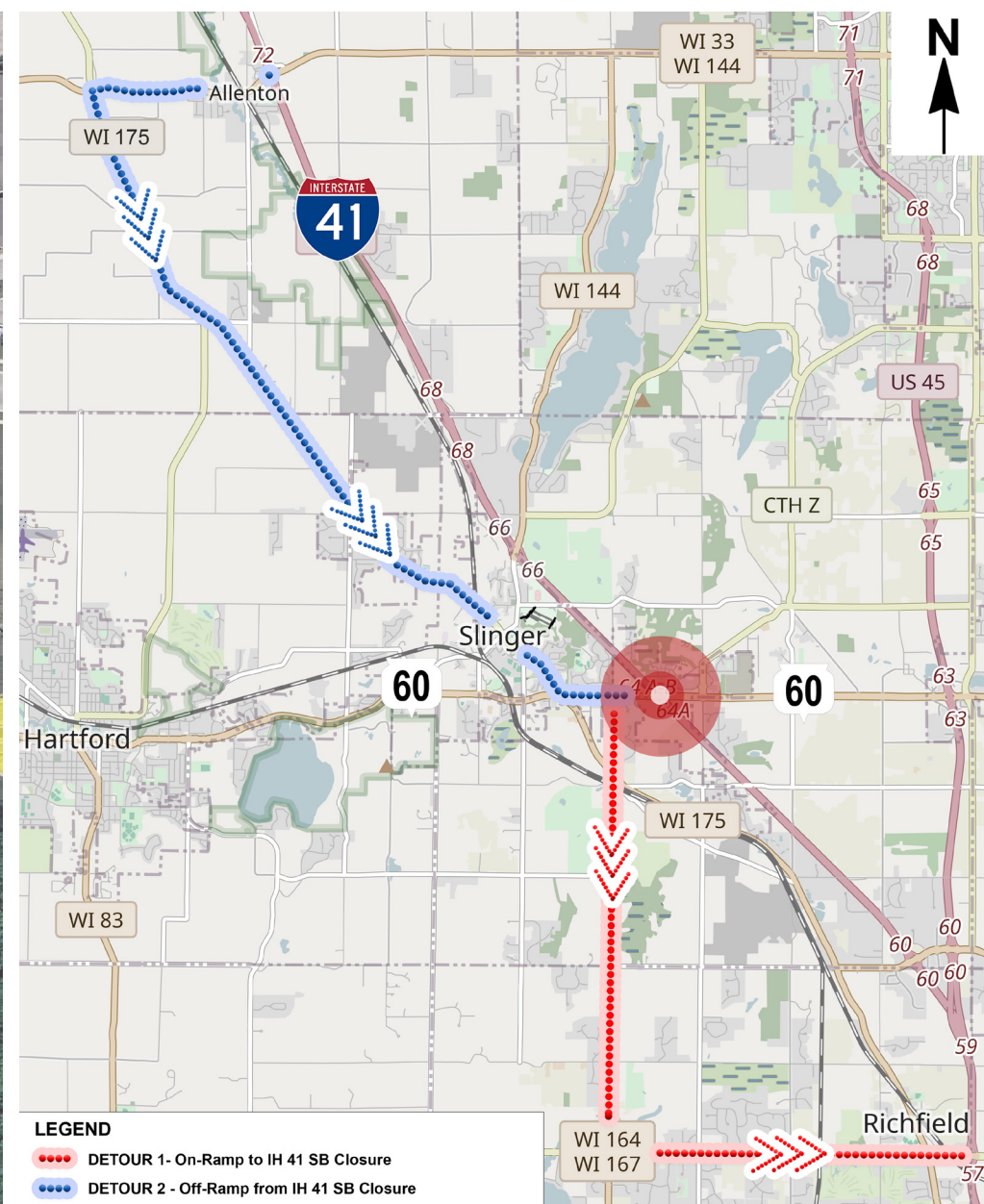
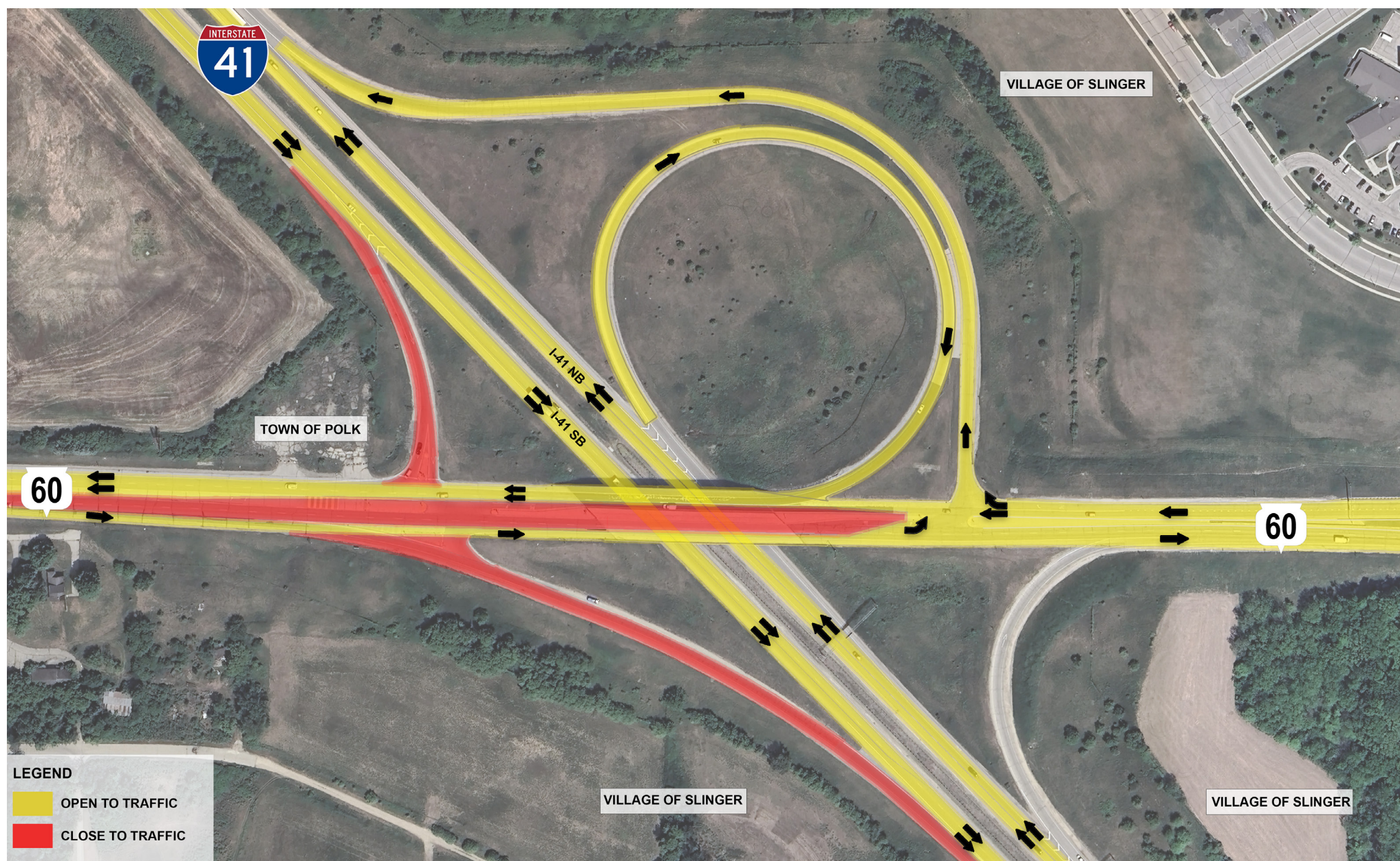




# WIS 60 AND I-41 INTERCHANGE : TRAFFIC CONTROL AND DETOUR EXHIBIT - STAGE 1



## WIS 60 - EASTBOUND

One of the two through lanes will be closed in the EB Direction (approximately 3.5 months).

## WIS 60 - WESTBOUND

Both through lanes will be open in the WB direction (approximately 3.5 months).

## RAMPS

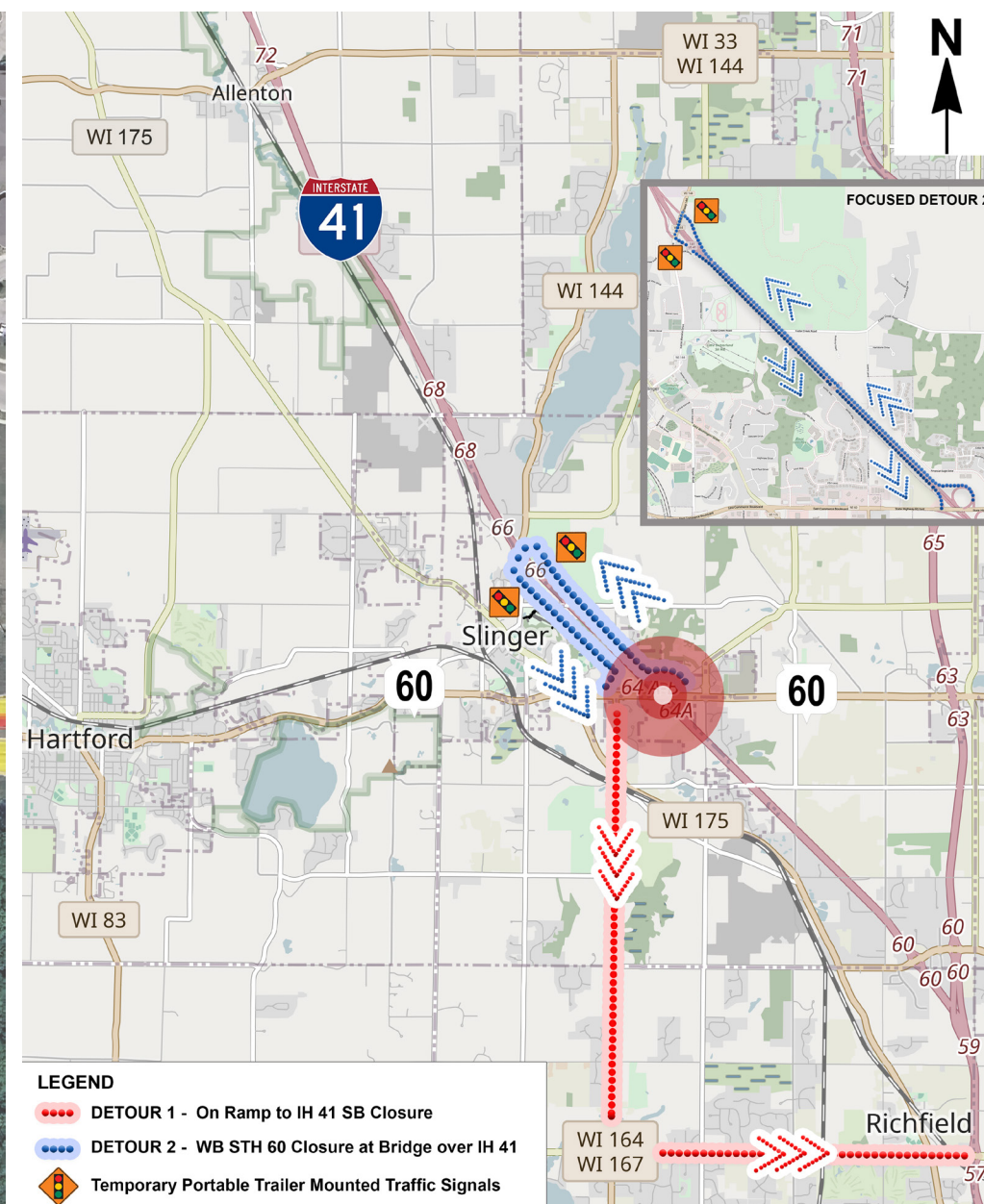
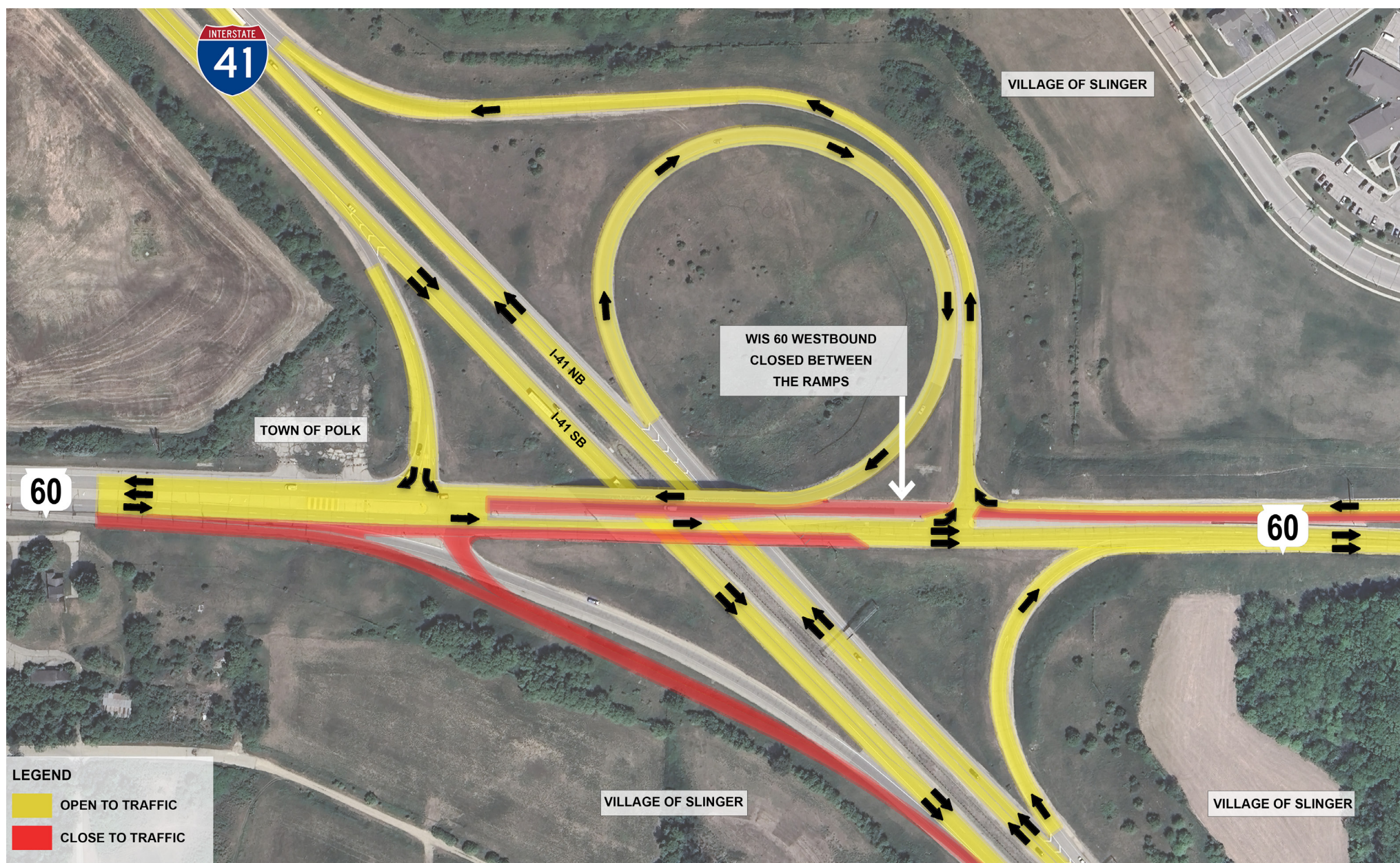
- SB Off Ramp will be closed (approximately 3 weeks).
- SB On Ramp will be closed (approximately 3.5 months).
- Additional night-time ramp closures will be needed during this stage.

## FREEWAY

Night-time single lane closures will be needed to accommodate the construction of the bridge.



# WIS 60 AND I-41 INTERCHANGE : TRAFFIC CONTROL AND DETOUR EXHIBIT - STAGE 2A



## WIS 60 - EASTBOUND

- One of the two through lanes will be closed in the eastbound direction (approximately 2 weeks).
- Additional lane closures will be required during night-time hours only to accommodate the paving operations.

## WIS 60 - WESTBOUND

- WIS 60 WB will be fully closed at the bridge (approximately 1 week).
- Additional lane closures will be required during night-time hours only to accommodate the paving operations.

## RAMPS

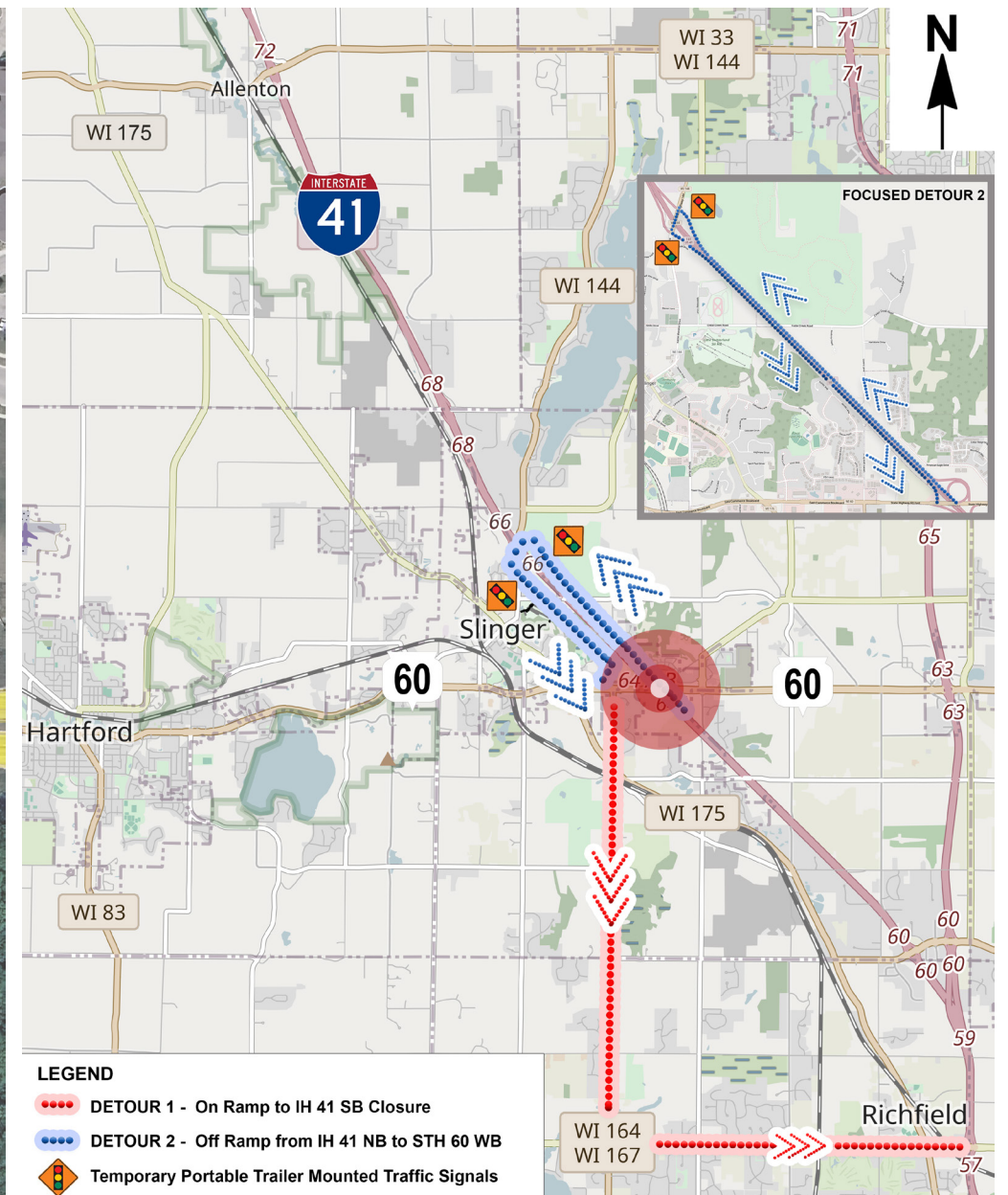
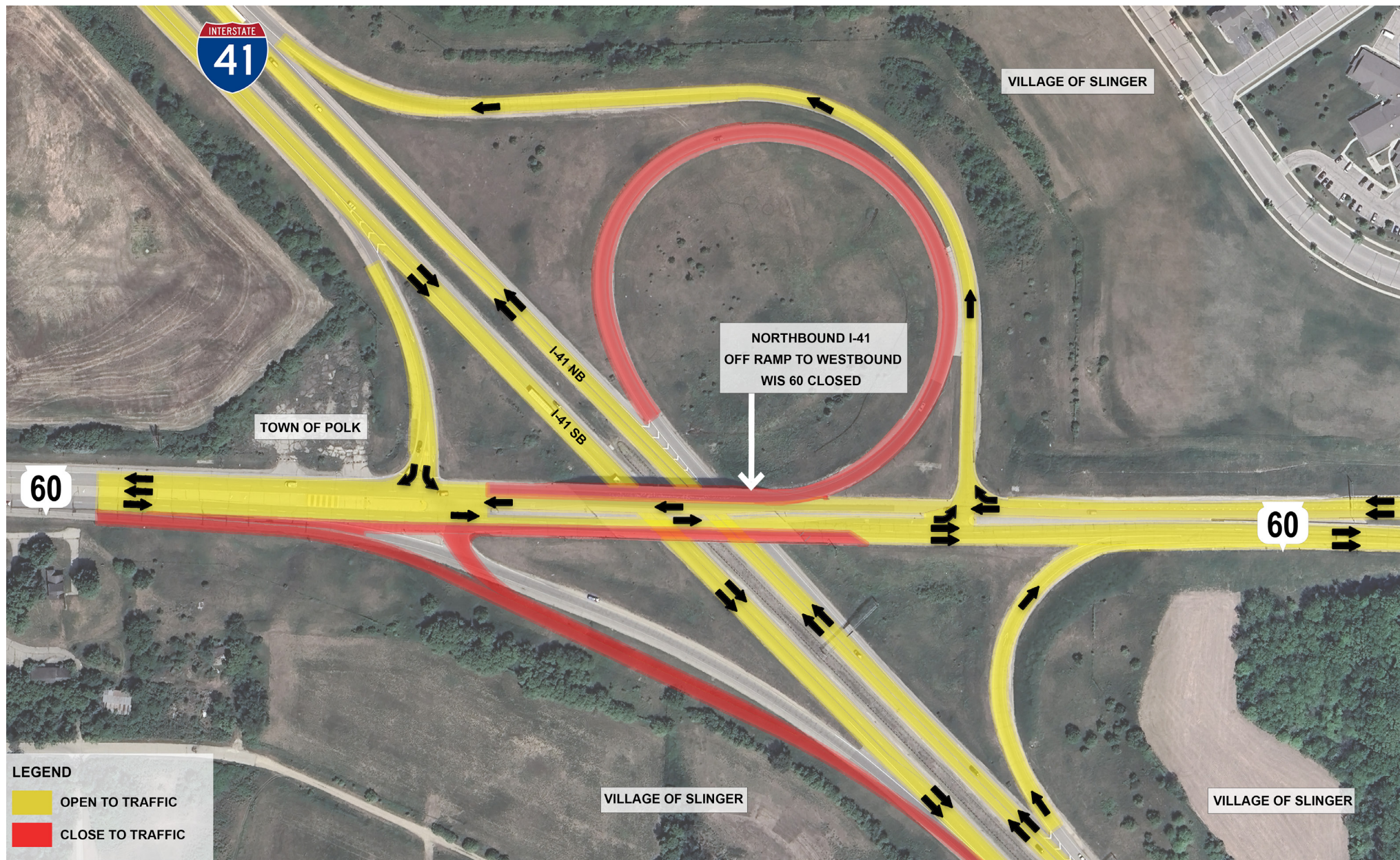
- SB On Ramp remains closed (approximately 2 weeks).
- Additional ramp closures are anticipated during night-time hours only to accommodate paving and bridge painting.

## FREEWAY

Night-time single lane closures will be needed to accommodate the bridge painting (approximately 6 weeks).



# WIS 60 AND I-41 INTERCHANGE : TRAFFIC CONTROL AND DETOUR EXHIBIT - STAGE 2B



## WIS 60 - EASTBOUND

- One of the two through lanes will be closed in the eastbound direction (approximately 2 weeks).
- Additional lane closures will be required during night-time hours only to accommodate the paving operations.

## WIS 60 - WESTBOUND

- WIS 60 WB will be open to traffic.
- Additional lane closures will be required during night-time hours only to accommodate the paving operations.

## RAMPS

- SB On Ramp remains closed (approximately 2 weeks).
- NB Off Ramp (Loop Ramp) will be closed (approximately 1 week).
- Additional ramp closures are anticipated during night-time hours only to accommodate paving and bridge painting.

## FREEWAY

Night-time single lane closures will be needed to accommodate the bridge painting (approximately 6 weeks).