

Public Involvement #1

3325-05-00/70

WIS 67, I-43 to E Walworth St

Resurfacing Project

Walworth County

December 2025

Topics

- Project Overview
- Proposed Improvements
- Construction Impacts
- Public Involvement
 - Newsletter with supporting project website
- Schedule
 - Construction proposed for 2031 or 2029 if funding available



Project Location

WIS 67 (Lincoln St / Geneva St / Wisconsin St)
I-43 to Walworth St



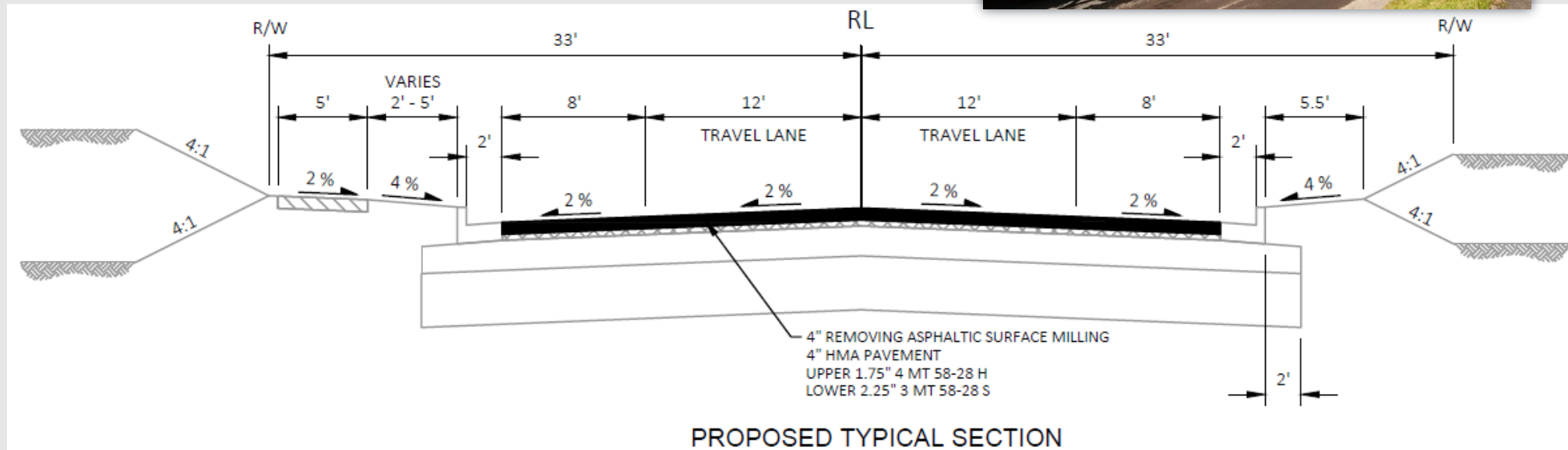
Proposed Improvements

- Mill and pave 4" asphalt pavement
- Minor box culvert maintenance (south end of project)
- Improve WSOR railroad crossing
- Replace signals at E. Geneva and S. Lincoln St. intersection
 - Minor realignment of SW and SE quadrant
- Replace non-compliant pedestrian curb ramps



Roadway Improvements

- Resurfacing Project (RSRF 25)
 - Mill and overlay of 4-inches existing pavement (6-inches total depth exist)
 - Full-depth asphaltic repair as needed
 - Re-set MH within pavement



Structure Maintenance

- Culvert (B-64-129)
 - Remove debris from channel/stream, add riprap, patch spalls, replace caulk between wing and culvert barrel



Railroad

- Railroad Project Submittal Package
 - Submit November 2026
- Upgrade signal equipment
- Reconstruct crossing surface at railroad crossing
- Will require a hard closure, 2-week typical



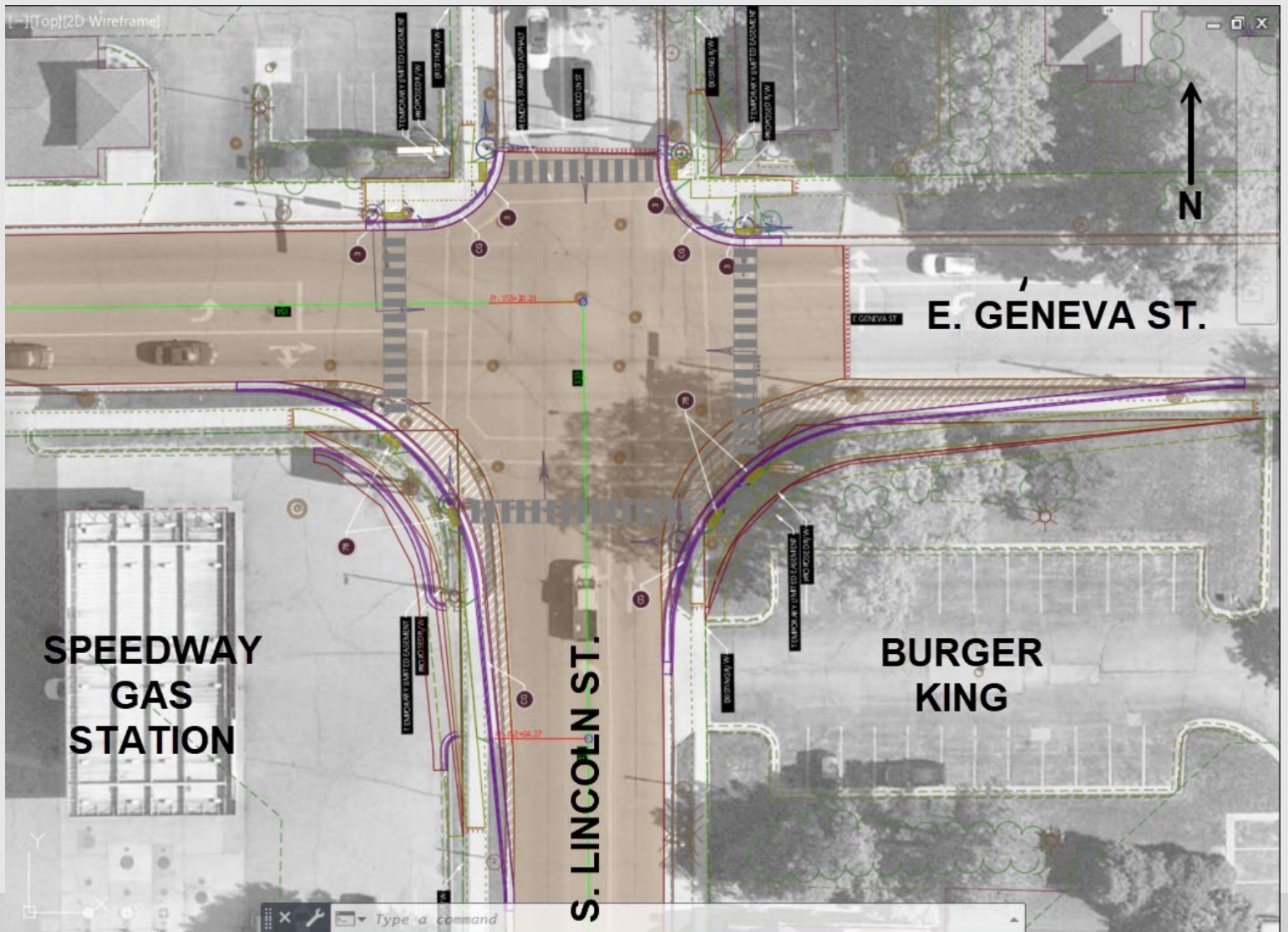
Safety Trends and Improvements

- Crash data reviewed along project corridor from 2016 to 2020
 - **Multimodal Crashes**
 - Lincoln St and Geneva St intersection - 3 pedestrians and 1 bicyclist struck in cross walk by right turning vehicles
 - South of Lincoln St and Geneva St intersection – 2 bicyclists crossing the road in a non designated cross walk were struck by SB motorists.
 - **No other crash trends identified**
- Proposed Low-Cost, Multimodal Improvements
 - **Lincoln St & Geneva St intersection**
 - Provide high-visibility crosswalks
 - Implement leading pedestrian signal phase
 - Implement “NO RIGHT TURN ON RED” signage



Proposed Improvements

- Extend C&G radii at the SW and SE quadrant of E Geneva St and S Lincoln St Intersection
 - Evidence of over tracking; signals have been struck by over tracking vehicles



Signals

- Geneva St and Lincoln St intersection – City Owned
 - Install monotubes, cabinet, controller, detection, EVP and intersection lighting
 - Black painted monotubes – subject to local cost share
- City is installing new signals at the intersection of Lincoln St and Deere Rd. for development



Access

- City of Elkhorn is the permitting authority as this is a Connecting Highway
- WisDOT Access had the following recommendations:
 - **Speedway gas station (S Lincoln & E Geneva St)**
 - Potential to move eastern driveway access south and/or limit 2-way access.



Access

- City of Elkhorn is the permitting authority as this is a Connecting Highway
- WisDOT Access had the following recommendations:
 - **Best Bargains Parking lot (E Geneva St and S Wisconsin St)**
 - Potentially eliminate one driveway entrance along E Geneva St



Lighting

- Existing Locations
 - Along S Wisconsin St from W Walworth St to E Geneva St
 - Along E Geneva St between S Lincoln St and S Wisconsin St
 - Intersection of E Geneva St and S Lincoln St
 - Updated with signals
 - Along S Lincoln St at most intersections and in a few midblock locations
- Other than signalized intersection, no changes proposed

Parking

- Locations - to remain with Local Cost Share
 - Wisconsin St from Walworth St to Geneva parking on both sides
 - 4 stalls on Geneva St from Wisconsin St to Washington St.
 - West side Lincoln St from Rockwell St to Deere Rd
 - East side Lincoln St from Rockwell St to Frank St



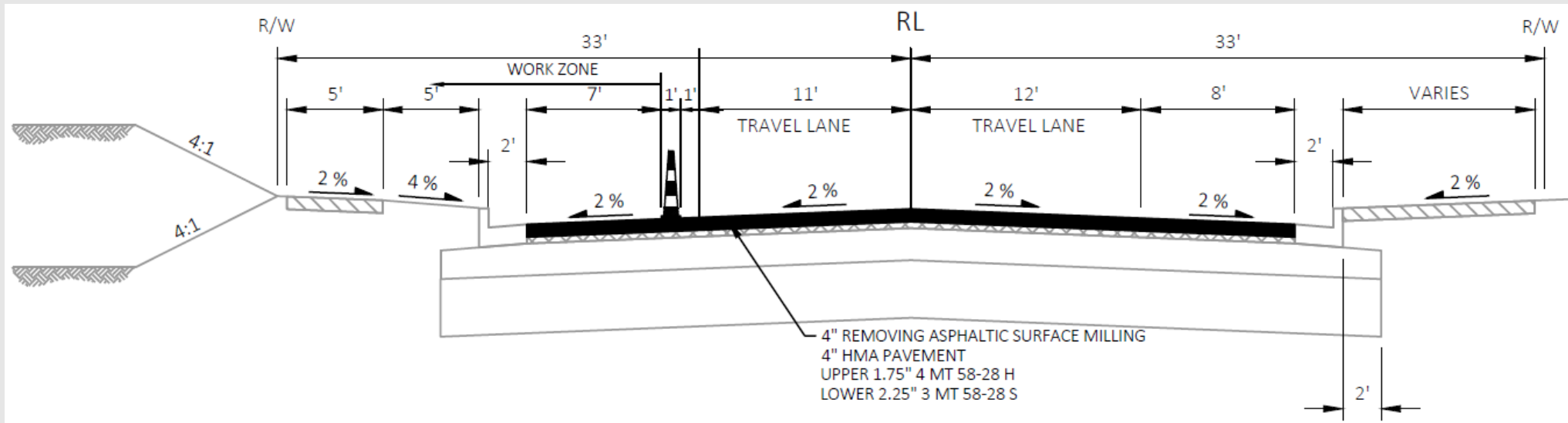
Multimodal

- Remove stamped asphalt at midblock crossing on S Wisconsin St between W Geneva St and E Walworth St.
- All non-ADA-compliant curb ramps to be replaced
- No additional sidewalk work proposed



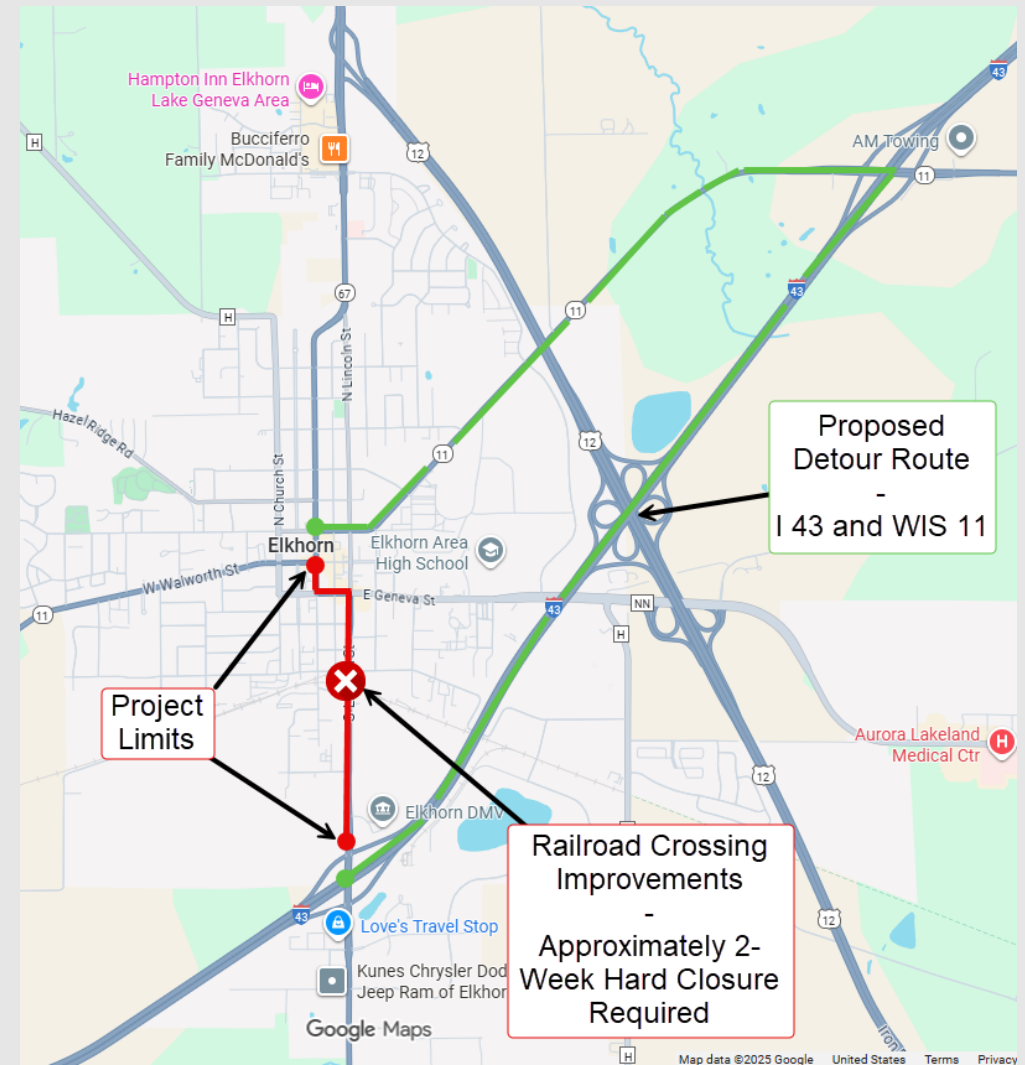
Construction

- Likely two stages
 - Stage 1: Outside shoulder closure for pedestrian curb ramp work
 - Stage 2: Mill and pave – road closed to thru traffic and detoured
- Railroad work
 - Hard Closure – typically 2-week period



Construction

- Likely two stages
 - Stage 1: Outside shoulder closure for pedestrian curb ramp work
 - Stage 2: Mill and pave – road closed to thru traffic and detoured
- Railroad work
 - Hard Closure – typically 2-week period



Project Schedule

- **LOM 2 – 11/11/2025**
- **Public Involvement Newsletter – December 10, 2025**
- Preliminary Plans – December 2025
- Environmental Document – Early Spring 2026
- Preliminary Plans / DSR – May 2026
- Final Right-of-Way Plat – October 2026
- **Real Estate Acquisition – October 2026 to April 2028**
 - 18-month (Due to Sign Relocation)
- Final Plans/EP&S – 11/1/2028
- **Early Construction - 2029**
- **Proposed Construction – 2031**



Questions or Concerns

- Please contact the Project Manager
 - Bob Bellin, P.E.
 - 262-521-4405
 - robert.bellin@dot.wi.gov

