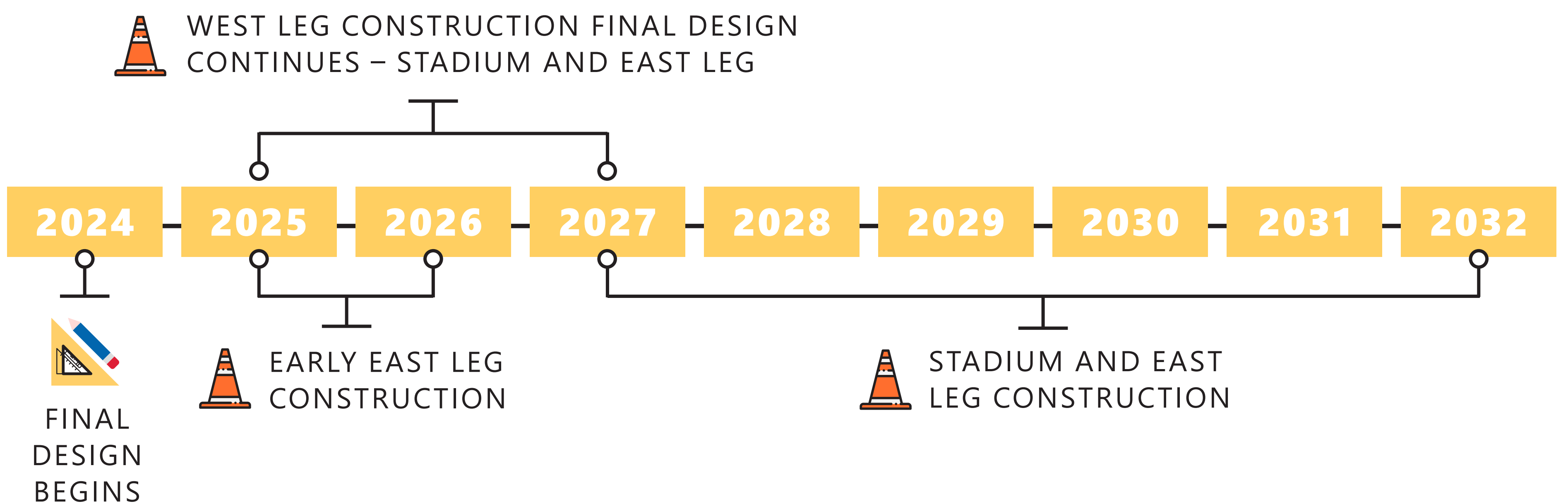


STADIUM INTERCHANGE RENDERING



ANTICIPATED SCHEDULE



CONTACT US

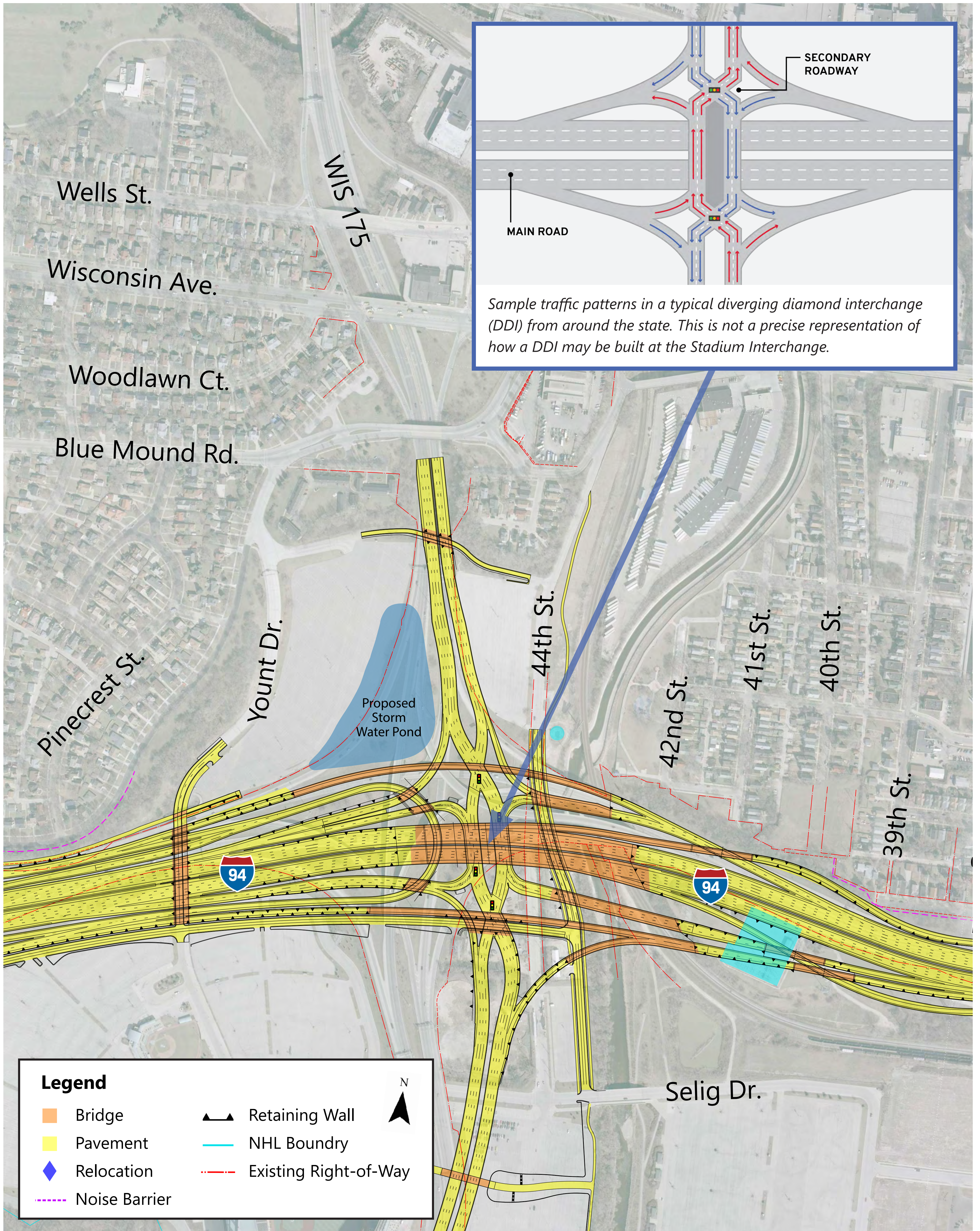
PROJECT MANAGERS
Chris Zacharias, P.E.
Stadium Interchange and east to 16th Street
P: (262) 548-6716
Evan Limberatos, P.E.
70th Street to the west end of the Stadium Interchange
P: (262) 548-8797

PROJECT EMAIL
I94EW@dot.wi.gov



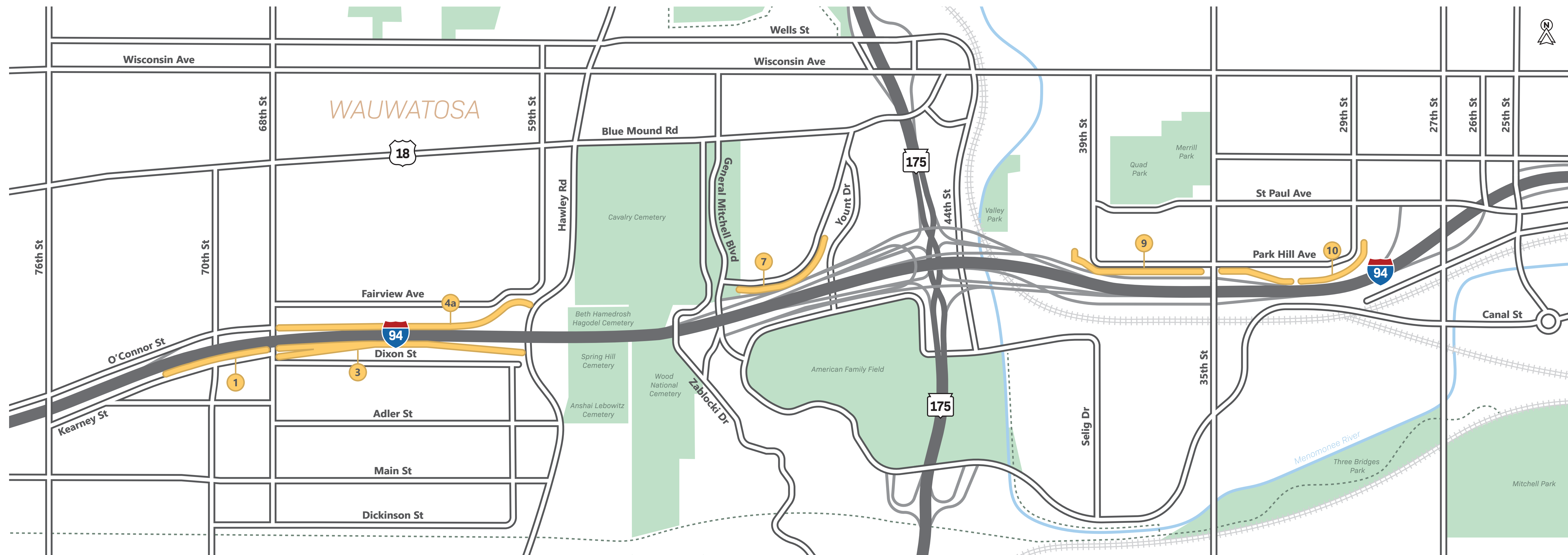
**SCAN ME!
VISIT THE PROJECT
WEBSITE**
wisconsindot.gov/94eastwest

I-94 EAST-WEST



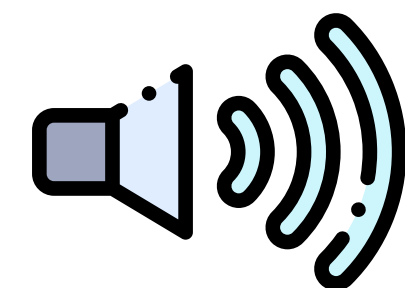
Eligible Noise Barrier Locations

I-94 EAST-WEST

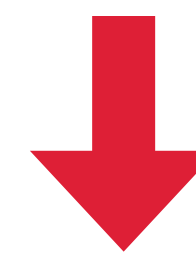


Noise Barrier Design Process

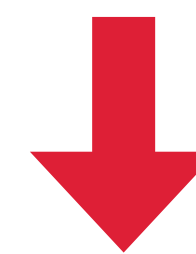
I-94 EAST-WEST



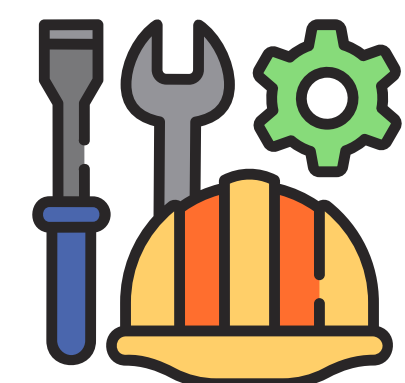
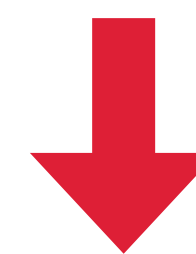
FOR TYPE 1 PROJECTS, A NOISE ANALYSIS IS DONE TO DETERMINE IF THE PROPOSED PROJECT WILL RESULT IN NOISE IMPACTS



IF IMPACTS ARE DETERMINED, WISDOT DETERMINES IF NOISE ABATEMENT IS TECHNICALLY FEASIBLE AND COST REASONABLE



BENEFITED RECEPTORS ARE GIVEN THE OPPORTUNITY TO VOTE FOR/AGAINST THE BARRIER

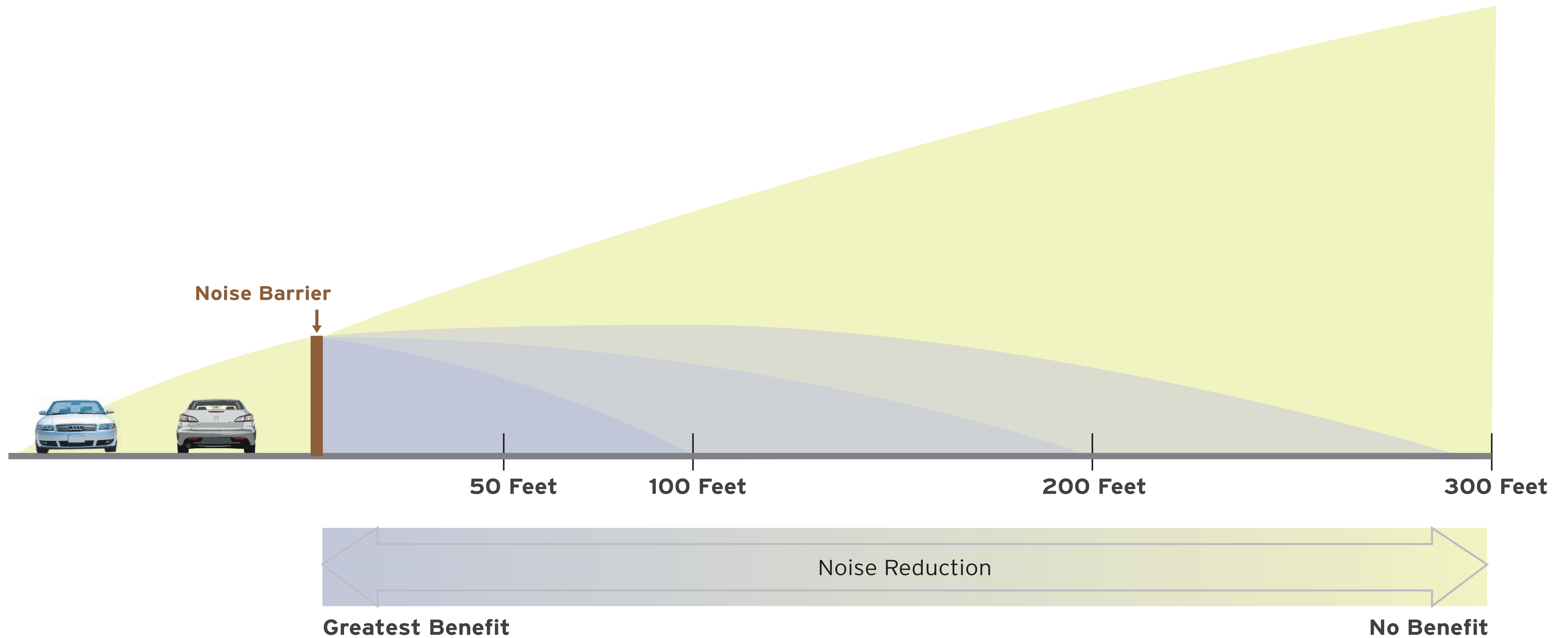


IF A SIMPLE MAJORITY OF VOTES ARE IN FAVOR OF THE BARRIER, IT WILL BE CONSTRUCTED AS PART OF THE PROJECT

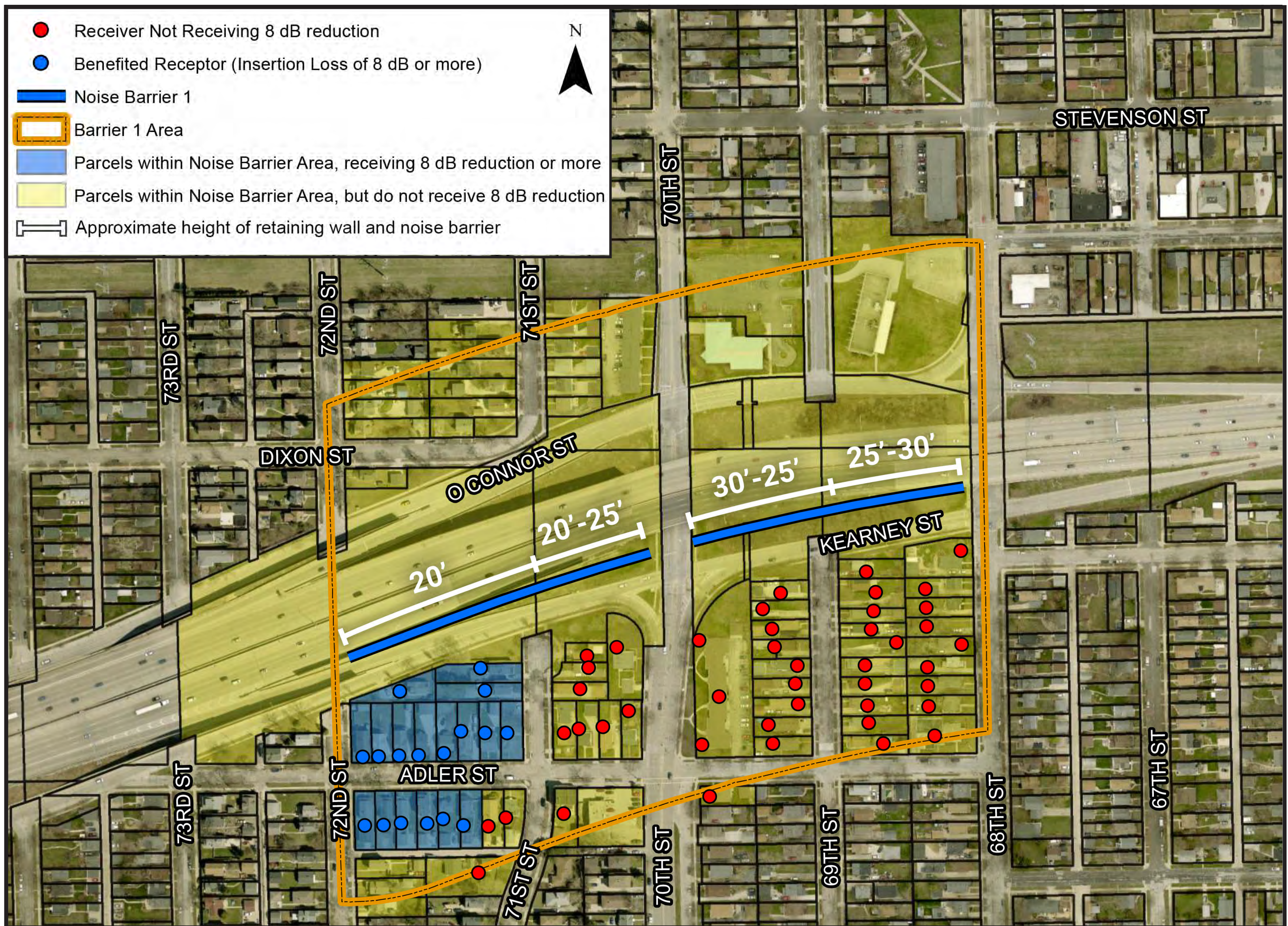
*Benefited is defined as a receptor receiving a minimum eight (8) decibels reduction in sound level as a result of the proposed abatement measure

Noise Barrier Effectiveness

I-94 EAST-WEST

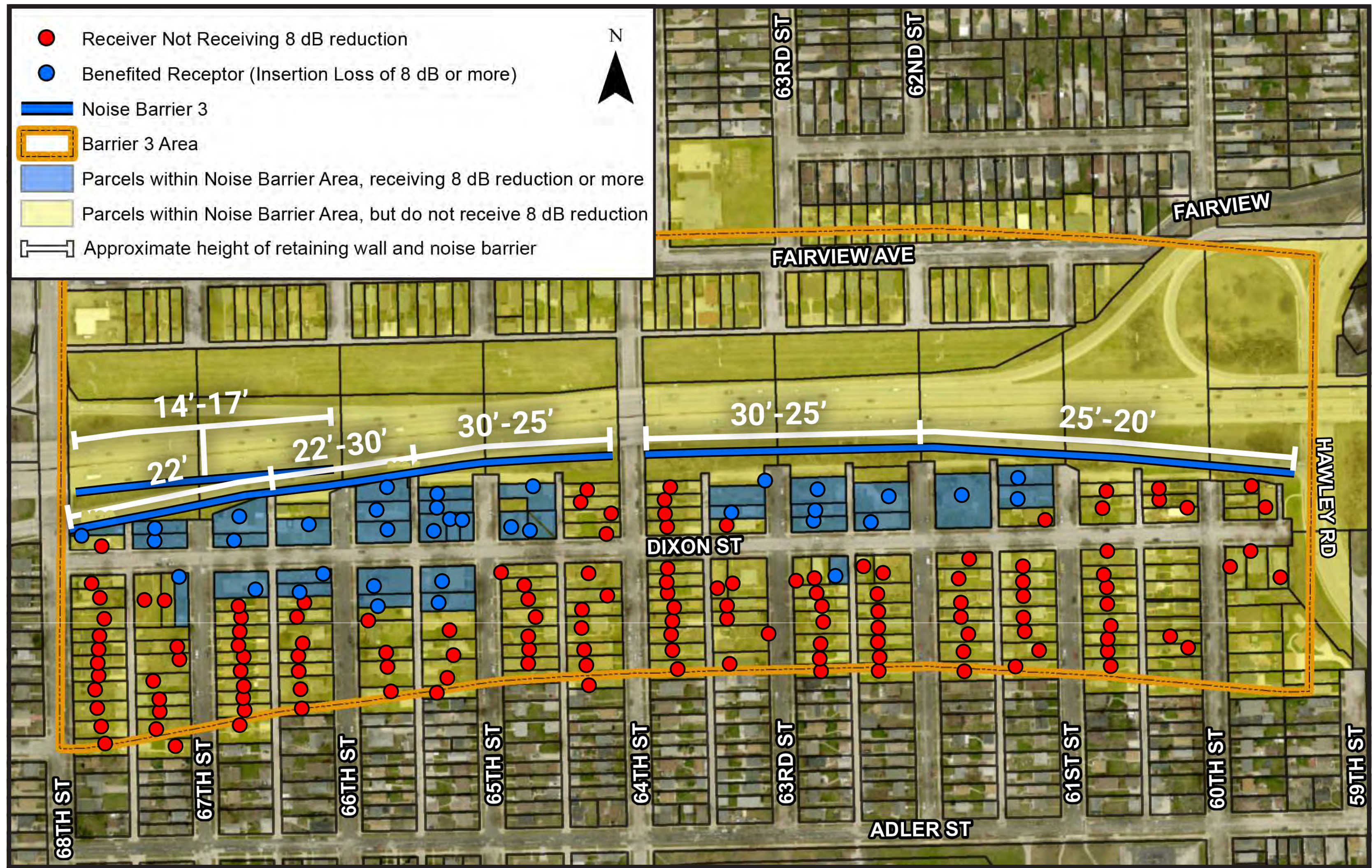


I-94 EAST-WEST PROPOSED NOISE BARRIER 1



Address	Future Noise Level Without Barrier	Future Noise Level With Barrier	Change
316 S. 72nd Street	75	67	8
316 S. 71st Street	73	65	8
311 S. 71st Street	70	60	10
7132 W. Adler Street	70	60	10
7138 W. Adler Street	69	60	9
7142 W. Adler Street	68	59	9
7126 W. Adler Street	70	61	9
7118 W. Adler Street	71	62	9
7116 W. Adler Street	71	62	9
7108 W. Adler Street	70	62	8
7102 W. Adler Street	73	64	9
317 S. 71st Street	66	57	9
7143 W. Adler Street	66	58	8
7137 W. Adler Street	66	58	8
7133 W. Adler Street	66	58	8
7127 W. Adler Street	66	58	8
7121 W. Adler Street	66	58	8

I-94 EAST-WEST PROPOSED NOISE BARRIER 3



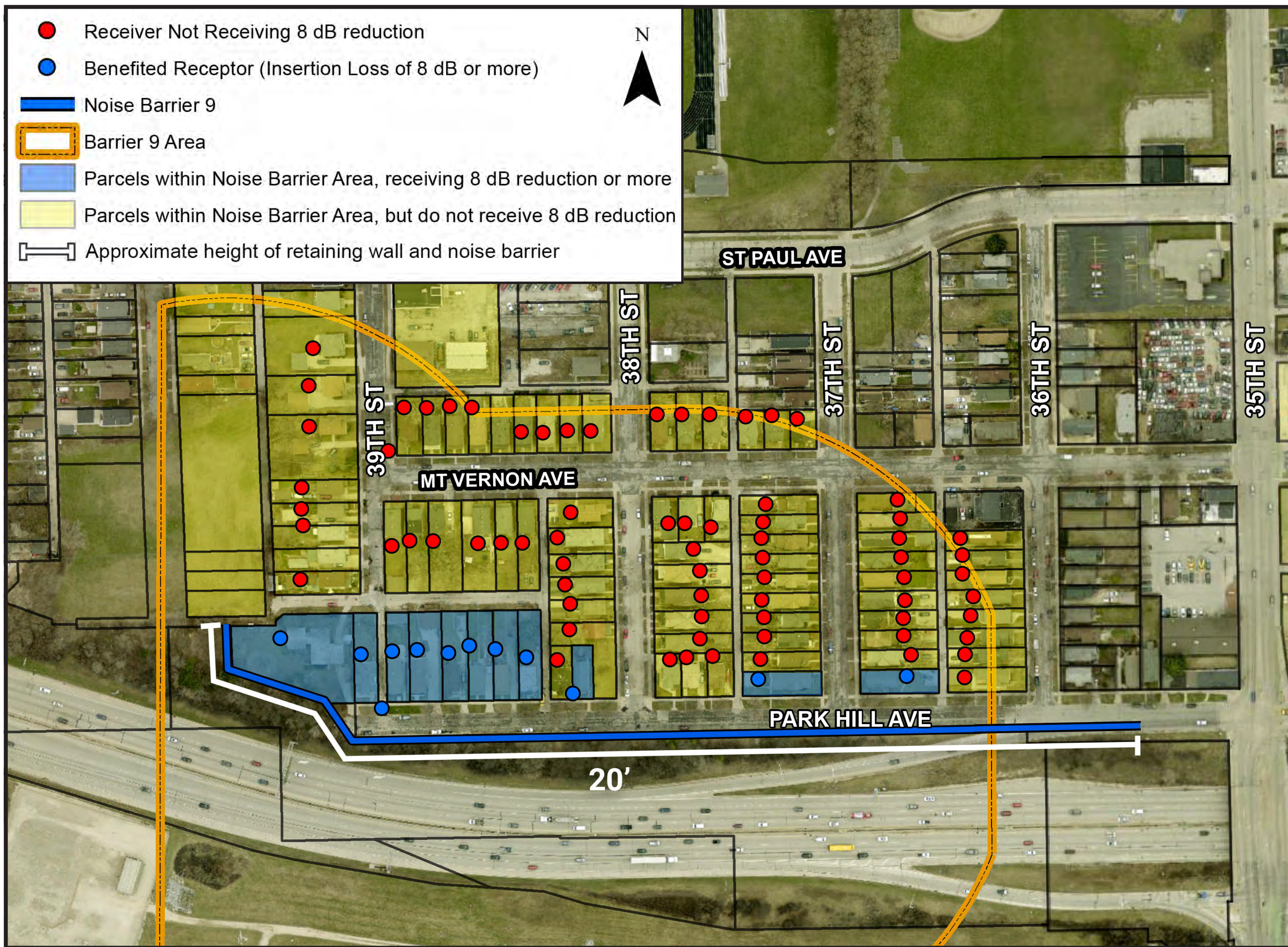
Address	Future Noise Level Without Barrier	Future Noise Level With Barrier	Change
220 S. 68th Street	72	64	8
6701 W. Dixon Street	69	61	8
172 S. 67th Street	73	59	14
201 S. 66th Street	68	59	9
164 S. 66th Street	78	60	18
168 S. 66th Street	73	61	12
164 S. 65th Street	68	60	8
6434 W. Dixon Street	68	60	8
6420 W. Dixon Street	68	60	8
173 S. 67th Street	71	61	10
177 S. 67th Street	72	59	13
176 S. 67th Street	71	60	11
207 S. 66th Street	67	59	8
173 S. 66th Street	72	60	12
6521 W. Dixon Street	67	59	8
210 S. 66th Street	69	59	10
176 S. 66th Street	75	61	14
205 S. 65th Street	67	59	8
211 S. 65th Street	66	58	8
163 S. 65th Street	70	60	10
169 S. 65th Street	70	60	10
169 S. 66th Street	71	60	11
6502 W. Dixon Street	70	60	10
6506 W. Dixon Street	69	60	9
6633 W. Dixon Street	68	60	8
166 S. 63rd Street	73	61	12
170 S. 63rd Street	70	60	10
165 S. 63rd Street	68	60	8
171 S. 63rd Street	69	61	8
176 S. 63rd Street	72	60	12
6221 W. Dixon Street	66	58	8
174 S. 62nd Street	69	59	10
177 S. 62nd Street	75	61	14
170 S. 62nd Street	72	61	11
169 S. 61st Street	67	59	8
163 S. 61st Street	69	60	9

I-94 EAST-WEST PROPOSED NOISE BARRIER 4A



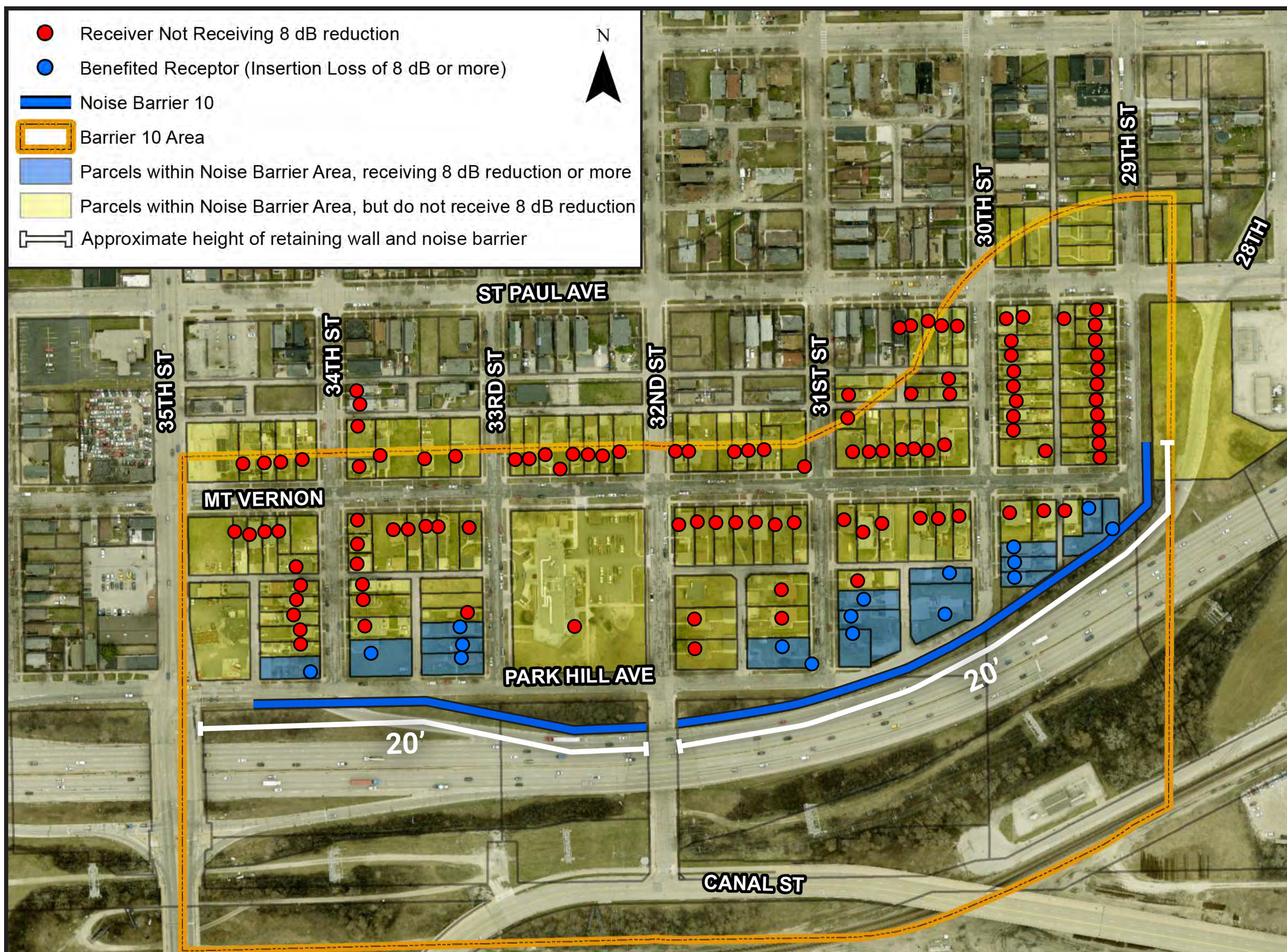
Address	Future Noise Level Without Barrier	Future Noise Level With Barrier	Change
6203 W. Fairview Avenue	69	61	8
6108 W. Fairview Avenue	74	62	12
6029 W. Fairview Avenue	74	62	12
6007 W. Stevenson Street	69	60	9
117 N. 60th Street	70	62	8
6225 W. Fairview Avenue	69	61	8
6217 W. Fairview Avenue	70	61	9
6221 W. Fairview Avenue	70	62	8
6209 W. Fairview Avenue	69	61	8
6113 W. Fairview Avenue	72	61	11
6101 W. Fairview Avenue	75	62	13
6033 W. Fairview Avenue	74	62	12
6017 W. Stevenson Street	69	61	8
6013 W. Stevenson Street	69	61	8
6021 W. Stevenson Street	69	60	9
6027 W. Stevenson Street	68	60	8
6035 W. Stevenson Street	68	60	8
6016 W. Fairview Avenue	71	61	10
6020 W. Fairview Avenue	71	61	10
6026 W. Fairview Avenue	61	61	10
6034 W. Fairview Avenue	70	61	9
6040 W. Fairview Avenue	68	60	8
6102 W. Fairview Avenue	68	60	8
6106 W. Fairview Avenue	67	59	8
6110 W. Fairview Avenue	68	60	8
6116 W. Fairview Avenue	68	60	8
6121 W. Fairview Avenue	72	61	11
6125 W. Fairview Avenue	71	61	10
6129 W. Fairview Avenue	71	61	10
6133 W. Fairview Avenue	71	61	10

I-94 EAST-WEST PROPOSED NOISE BARRIER 9



Address	Future Noise Level Without Barrier	Future Noise Level With Barrier	Change
3806 W. Park Hill Avenue	70	58	12
3902 W. Park Hill Avenue	74	61	13
201 N. 37th Street	66	58	8
3630 W. Park Hill Avenue	67	59	8
3900 W. Park Hill Avenue	70	59	11
3842 W. Park Hill Avenue	70	59	11
3838 W. Park Hill Avenue	69	58	11
3834 W. Park Hill Avenue	68	58	10
3828 W. Park Hill Avenue	67	58	9
3816 W. Park Hill Avenue	66	58	8
3822 W. Park Hill Avenue	66	58	8
3906 W. Park Hill Avenue	70	58	12

I-94 EAST-WEST PROPOSED NOISE BARRIER 10



Address	Future Noise Level Without Barrier	Future Noise Level With Barrier	Change
3412 W. Park Hill Avenue	71	61	10
206 N. 34th Street	71	61	10
209 N. 33rd Street	71	62	9
203 N. 33rd Street	72	61	11
211 N. 33rd Street	70	61	9
216 N. 31st Street	70	62	8
215 N. 30th Street	73	62	11
2901 W. Mount Vernon Avenue	72	57	15
203 N. 31st Street	73	62	11
2905 W. Mount Vernon Avenue	67	59	8
230 N. 30th Street	67	59	8
226 N. 30th Street	69	60	9
222 N. 30th Street	71	60	11
223 N. 30th Street	69	60	9
206-08 N. 31st Street	72	62	10
212 N. 31st Street	71	62	9
216 N. 31st Street	72	63	9

I-94 East-West

ELIGIBLE NOISE BARRIER #1: 69TH AT KEARNEY STREET



PROPOSED VIEW



EXISTING VIEW

LOOKING NORTH

I-94 East-West

ELIGIBLE NOISE BARRIER #3: 66TH STREET AT DIXON STREET



PROPOSED VIEW



EXISTING VIEW

LOOKING NORTH

I-94 East-West

ELIGIBLE NOISE BARRIER #3: 63RD STREET AT DIXON STREET



PROPOSED VIEW



EXISTING VIEW

LOOKING NORTH

I-94 East-West

ELIGIBLE NOISE BARRIER #4a: NORTH OF I-94 AT 64TH STREET



PROPOSED VIEW



EXISTING VIEW

LOOKING WEST

I-94 East-West

ELIGIBLE NOISE BARRIER #4a: NORTH OF I-94 AT 64TH STREET



PROPOSED VIEW



EXISTING VIEW

LOOKING EAST

I-94 East-West

ELIGIBLE NOISE BARRIER #9: PARK HILL AVENUE AT 38TH STREET



PROPOSED VIEW



EXISTING VIEW

LOOKING SOUTHWEST

I-94 East-West

ELIGIBLE NOISE BARRIER #10: 29TH STREET NEAR MOUNT VERNON AVENUE



PROPOSED VIEW



EXISTING VIEW

LOOKING SOUTH

I-94 East-West

ELIGIBLE NOISE BARRIER #10: PARK HILL AVENUE AT 31ST STREET



PROPOSED VIEW



EXISTING VIEW

LOOKING EAST

I-94 East-West

ELIGIBLE NOISE BARRIER #10: PARK HILL AVENUE AT 33RD STREET



PROPOSED VIEW



EXISTING VIEW

LOOKING WEST