

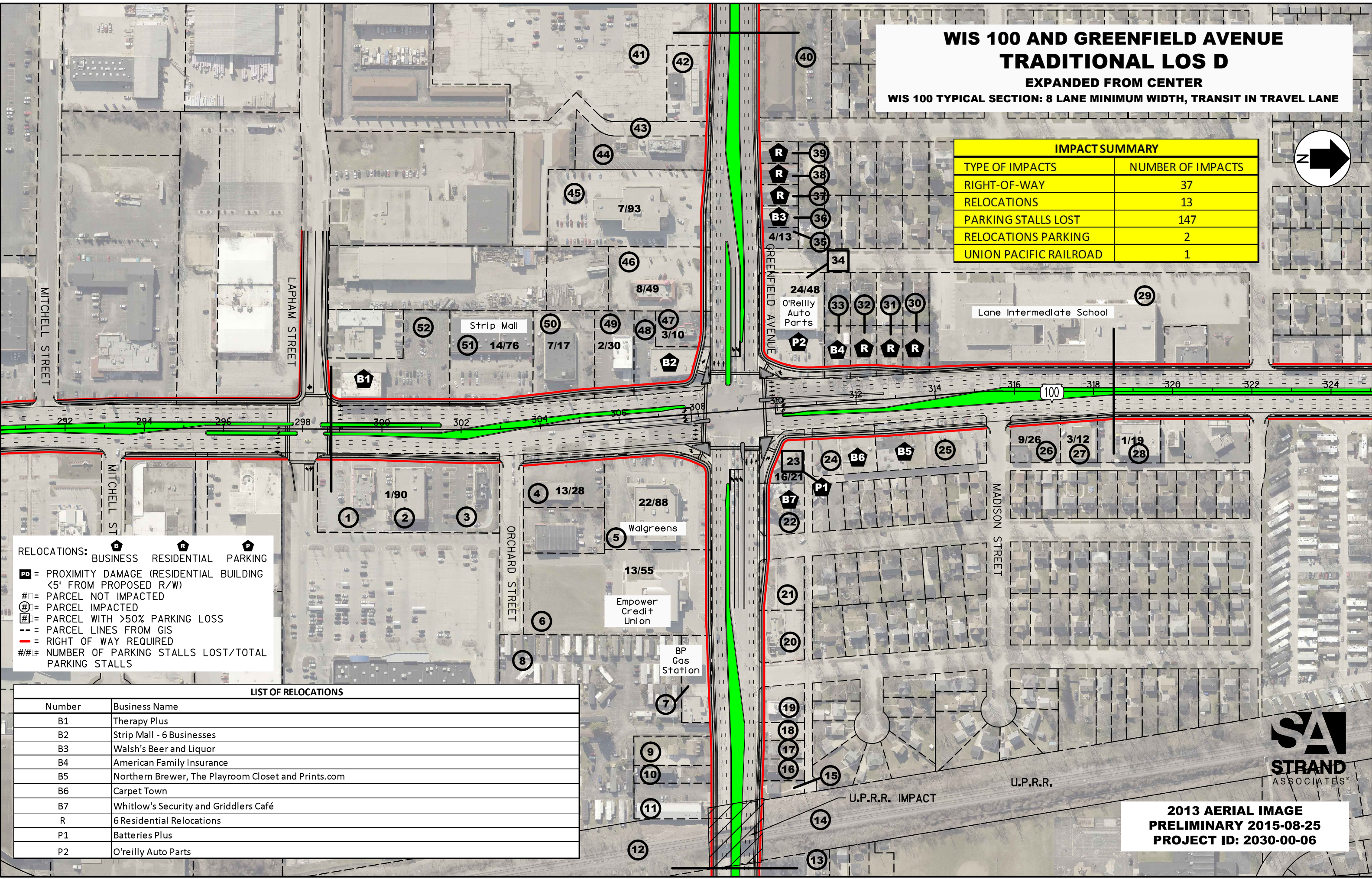
**WIS 100 AND GREENFIELD AVENUE
TRADITIONAL LOS D
EXPANDED FROM CENTER
WIS 100 TYPICAL SECTION: 8 LANE MINIMUM WIDTH, TRANSIT IN TRAVEL LANE**

IMPACT SUMMARY	
TYPE OF IMPACTS	NUMBER OF IMPACTS
RIGHT-OF-WAY	37
RELOCATIONS	13
PARKING STALLS LOST	147
RELOCATIONS PARKING	2
UNION PACIFIC RAILROAD	1



RELOCATIONS: **B** BUSINESS **R** RESIDENTIAL **P** PARKING
PD = PROXIMITY DAMAGE (RESIDENTIAL BUILDING <5' FROM PROPOSED R/W)
= PARCEL NOT IMPACTED
= PARCEL IMPACTED
= PARCEL WITH >50% PARKING LOSS
- - - = PARCEL LINES FROM GIS
- - - = RIGHT OF WAY REQUIRED
= NUMBER OF PARKING STALLS LOST/TOTAL PARKING STALLS

LIST OF RELOCATIONS	
Number	Business Name
B1	Therapy Plus
B2	Strip Mall - 6 Businesses
B3	Walsh's Beer and Liquor
B4	American Family Insurance
B5	Northern Brewer, The Playroom Closet and Prints.com
B6	Carpet Town
B7	Whitlow's Security and Griddlers Café
R	6 Residential Relocations
P1	Batteries Plus
P2	O'reilly Auto Parts



**2013 AERIAL IMAGE
PRELIMINARY 2015-08-25
PROJECT ID: 2030-00-06**

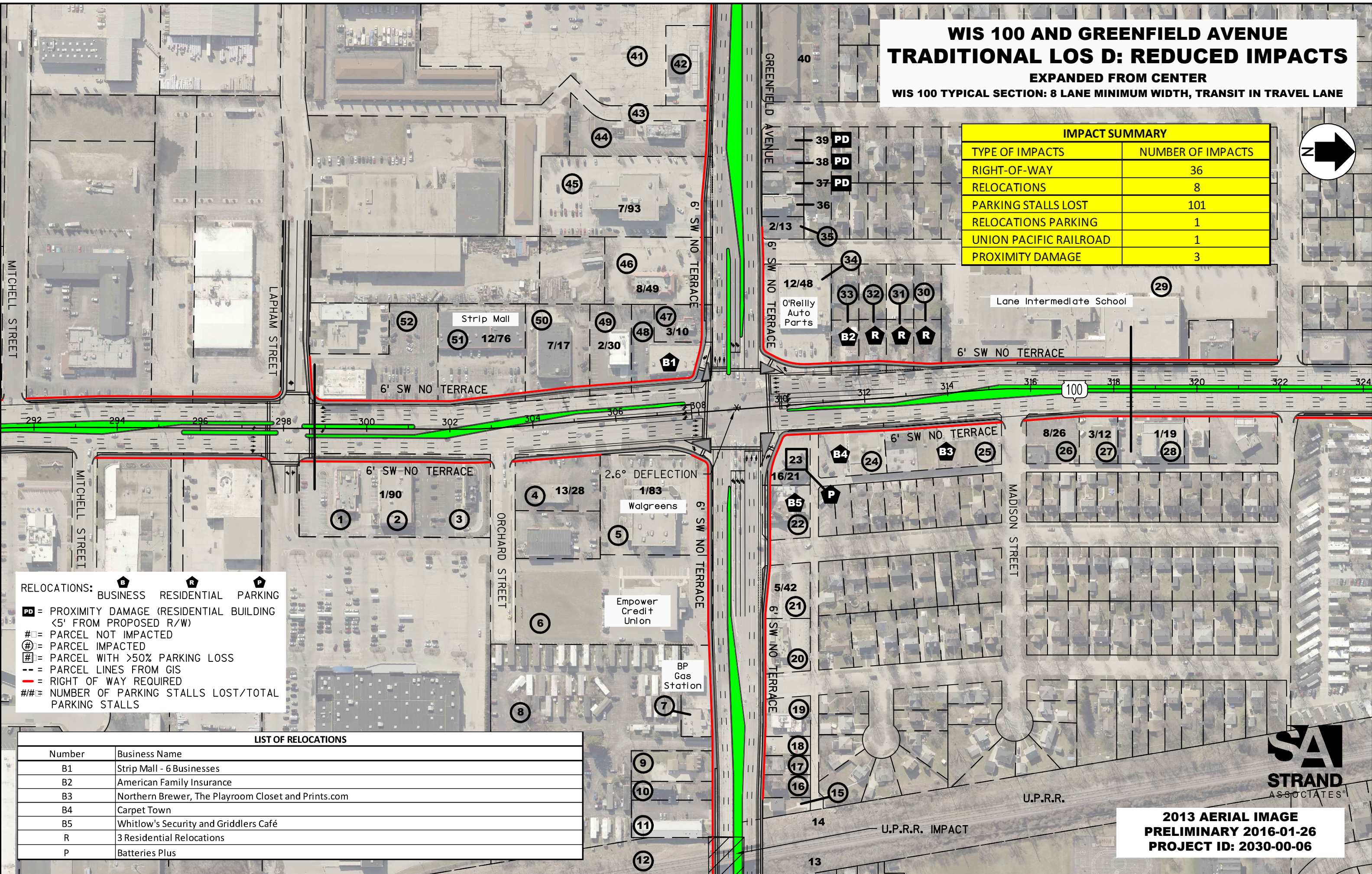
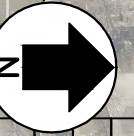


WIS 100 AND GREENFIELD AVENUE TRADITIONAL LOS D: REDUCED IMPACTS

EXPANDED FROM CENTER

WIS 100 TYPICAL SECTION: 8 LANE MINIMUM WIDTH, TRANSIT IN TRAVEL LANE

IMPACT SUMMARY	
TYPE OF IMPACTS	NUMBER OF IMPACTS
RIGHT-OF-WAY	36
RELOCATIONS	8
PARKING STALLS LOST	101
RELOCATIONS PARKING	1
UNION PACIFIC RAILROAD	1
PROXIMITY DAMAGE	3



RELOCATIONS: **B** BUSINESS **R** RESIDENTIAL **P** PARKING
PD = PROXIMITY DAMAGE (RESIDENTIAL BUILDING <5' FROM PROPOSED R/W)
= PARCEL NOT IMPACTED
⊕ = PARCEL IMPACTED
⊖ = PARCEL WITH >50% PARKING LOSS
 - - - = PARCEL LINES FROM GIS
 - - - = RIGHT OF WAY REQUIRED
 ## = NUMBER OF PARKING STALLS LOST/TOTAL PARKING STALLS

LIST OF RELOCATIONS	
Number	Business Name
B1	Strip Mall - 6 Businesses
B2	American Family Insurance
B3	Northern Brewer, The Playroom Closet and Prints.com
B4	Carpet Town
B5	Whitlow's Security and Gridders Café
R	3 Residential Relocations
P	Batteries Plus

2013 AERIAL IMAGE
 PRELIMINARY 2016-01-26
 PROJECT ID: 2030-00-06



RELOCATIONS: **B** BUSINESS **R** RESIDENTIAL **P** PARKING

PD = PROXIMITY DAMAGE (RESIDENTIAL BUILDING <5' FROM PROPOSED R/W)

#□ = PARCEL NOT IMPACTED

⊕ = PARCEL IMPACTED

#| = PARCEL WITH >50% PARKING LOSS

— = PARCEL LINES FROM GIS

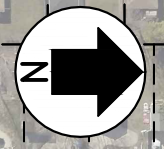
- - - = RIGHT OF WAY REQUIRED

= NUMBER OF PARKING STALLS LOST/TOTAL PARKING STALLS

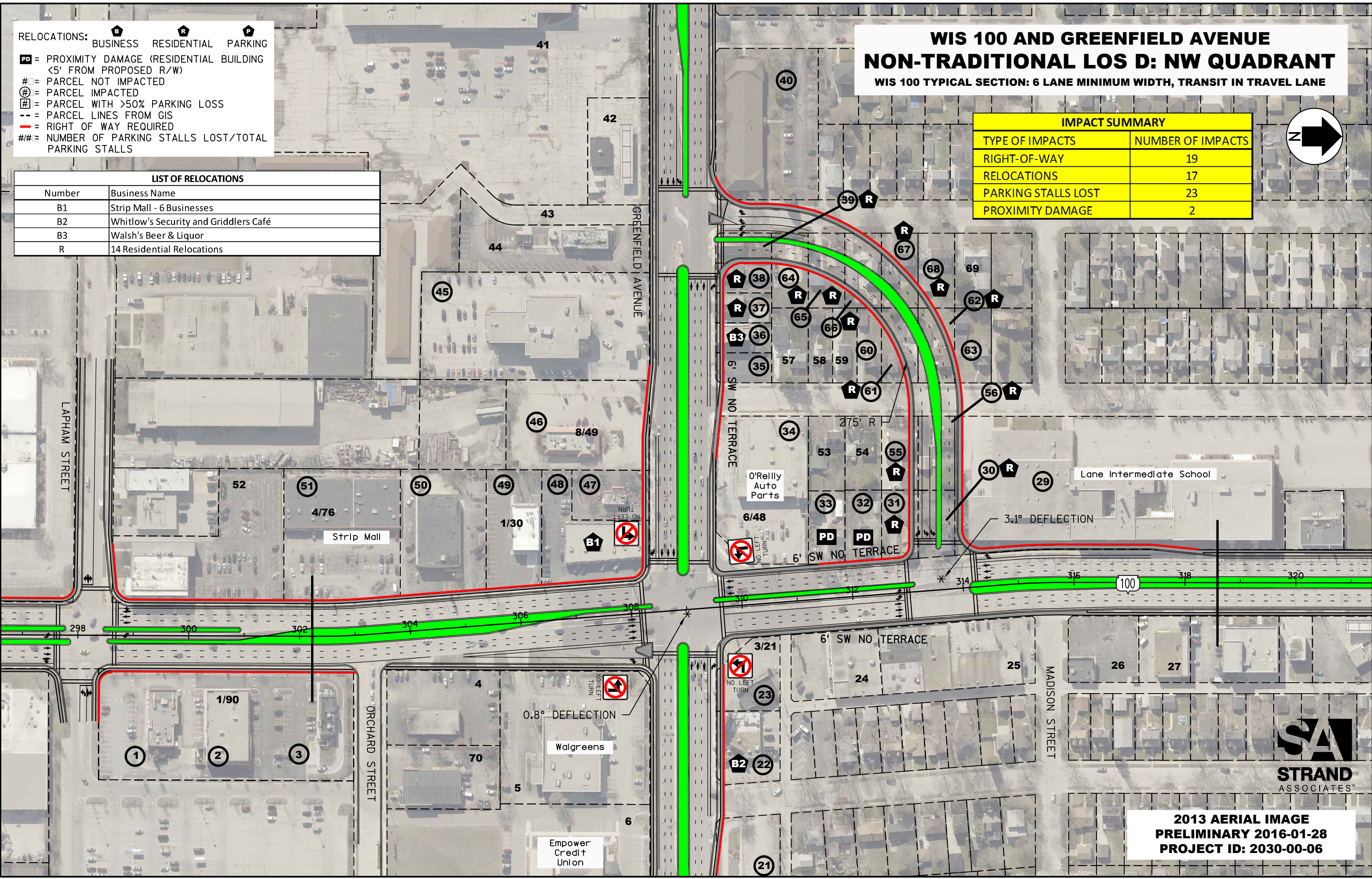
WIS 100 AND GREENFIELD AVENUE NON-TRADITIONAL LOS D: NW QUADRANT

WIS 100 TYPICAL SECTION: 6 LANE MINIMUM WIDTH, TRANSIT IN TRAVEL LANE

IMPACT SUMMARY	
TYPE OF IMPACTS	NUMBER OF IMPACTS
RIGHT-OF-WAY	19
RELOCATIONS	17
PARKING STALLS LOST	23
PROXIMITY DAMAGE	2



LIST OF RELOCATIONS	
Number	Business Name
B1	Strip Mall - 6 Businesses
B2	Whitlow's Security and Griddlers Café
B3	Walsh's Beer & Liquor
R	14 Residential Relocations

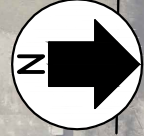


2013 AERIAL IMAGE
PRELIMINARY 2016-01-28
PROJECT ID: 2030-00-06

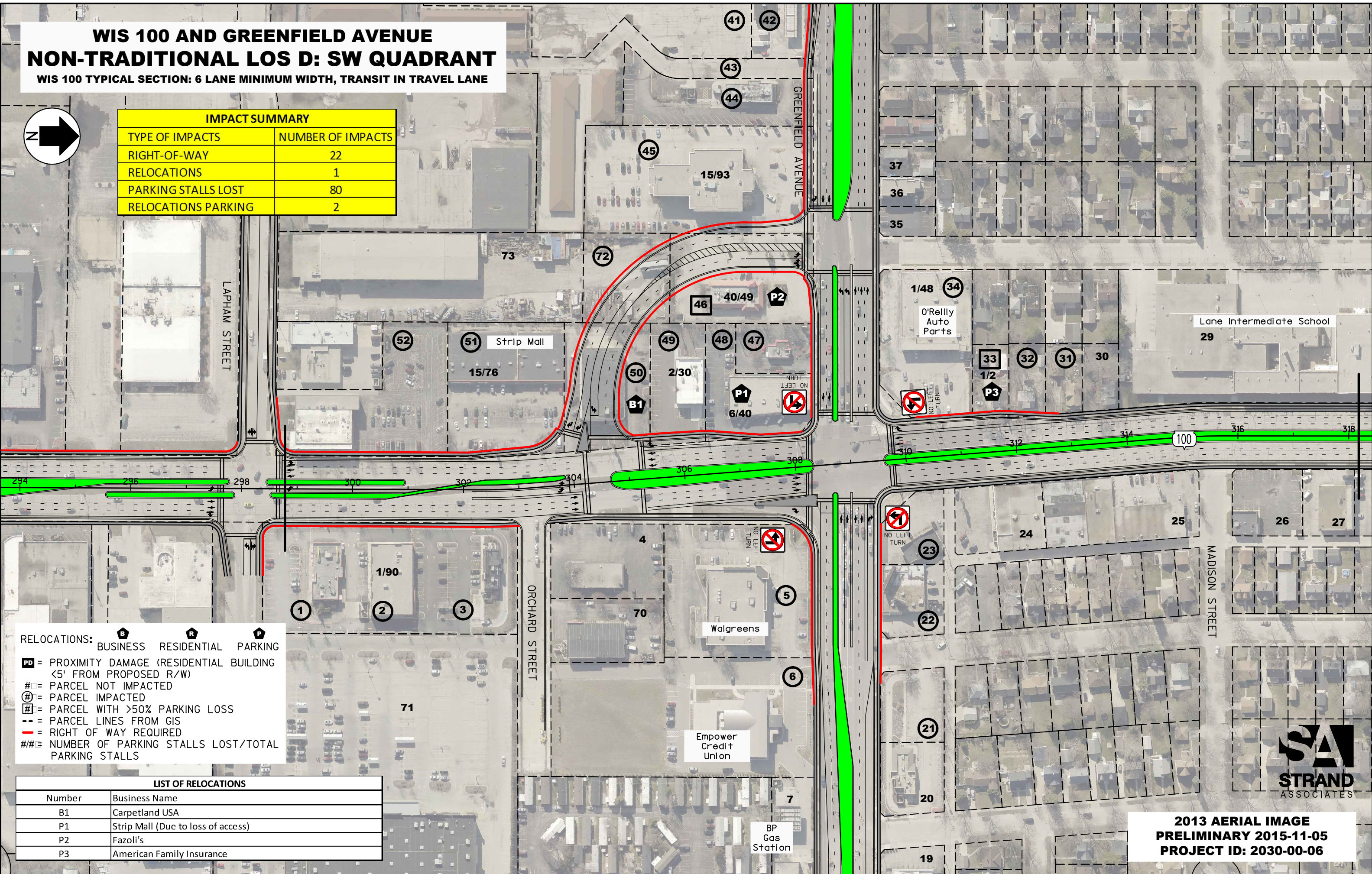


WIS 100 AND GREENFIELD AVENUE NON-TRADITIONAL LOS D: SW QUADRANT

WIS 100 TYPICAL SECTION: 6 LANE MINIMUM WIDTH, TRANSIT IN TRAVEL LANE



IMPACT SUMMARY	
TYPE OF IMPACTS	NUMBER OF IMPACTS
RIGHT-OF-WAY	22
RELOCATIONS	1
PARKING STALLS LOST	80
RELOCATIONS PARKING	2



RELOCATIONS: **B** BUSINESS **R** RESIDENTIAL **P** PARKING
PD = PROXIMITY DAMAGE (RESIDENTIAL BUILDING <5' FROM PROPOSED R/W)
= PARCEL NOT IMPACTED
⊕ = PARCEL IMPACTED
= PARCEL WITH >50% PARKING LOSS
 - - = PARCEL LINES FROM GIS
 - = RIGHT OF WAY REQUIRED
 ## = NUMBER OF PARKING STALLS LOST/TOTAL PARKING STALLS

LIST OF RELOCATIONS	
Number	Business Name
B1	Carpetland USA
P1	Strip Mall (Due to loss of access)
P2	Fazoli's
P3	American Family Insurance

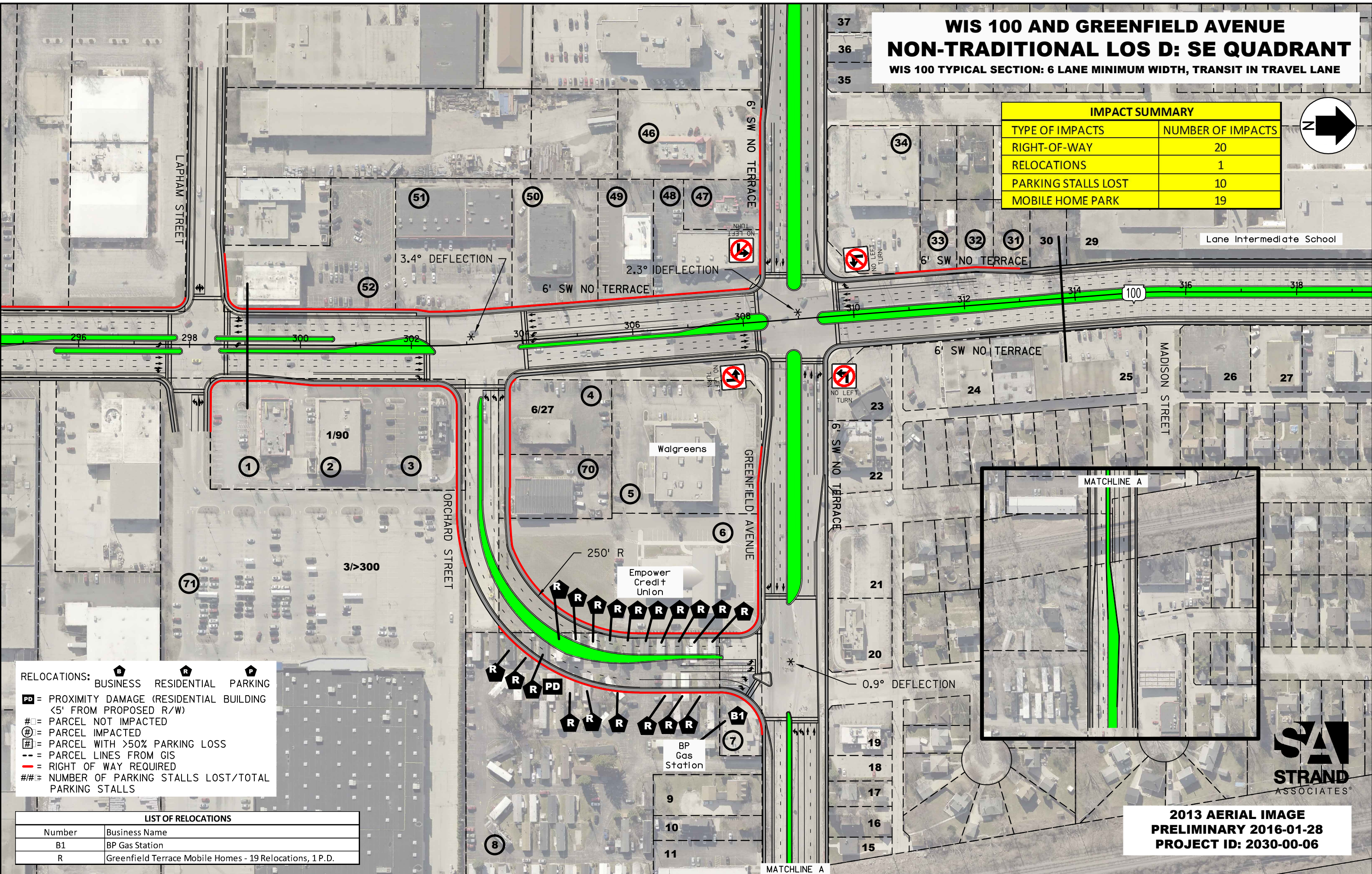
2013 AERIAL IMAGE
 PRELIMINARY 2015-11-05
 PROJECT ID: 2030-00-06



WIS 100 AND GREENFIELD AVENUE NON-TRADITIONAL LOS D: SE QUADRANT

WIS 100 TYPICAL SECTION: 6 LANE MINIMUM WIDTH, TRANSIT IN TRAVEL LANE

IMPACT SUMMARY	
TYPE OF IMPACTS	NUMBER OF IMPACTS
RIGHT-OF-WAY	20
RELOCATIONS	1
PARKING STALLS LOST	10
MOBILE HOME PARK	19



RELOCATIONS: B BUSINESS R RESIDENTIAL P PARKING

PD = PROXIMITY DAMAGE (RESIDENTIAL BUILDING <5' FROM PROPOSED R/W)

= PARCEL NOT IMPACTED

⊕ = PARCEL IMPACTED

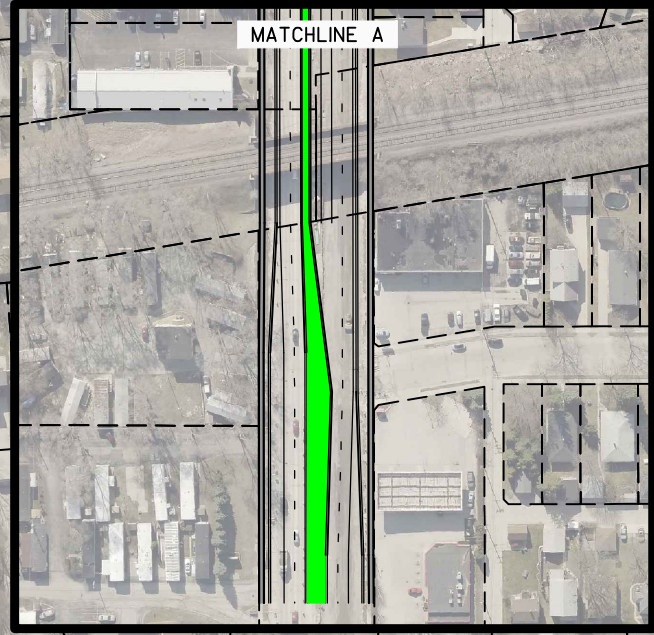
= PARCEL WITH >50% PARKING LOSS

- - - = PARCEL LINES FROM GIS

- - - = RIGHT OF WAY REQUIRED

= NUMBER OF PARKING STALLS LOST/TOTAL PARKING STALLS

LIST OF RELOCATIONS	
Number	Business Name
B1	BP Gas Station
R	Greenfield Terrace Mobile Homes - 19 Relocations, 1 P.D.



**2013 AERIAL IMAGE
PRELIMINARY 2016-01-28
PROJECT ID: 2030-00-06**

Range of Alternatives Impact Summary Chart

Greenfield Avenue Intersection

Alternative	R/W-Only Impacted Parcels	Estimated Relocations Required		Estimated Relocation Cost (Millions)	Parking Stalls Lost	Details
		Business Parcels	Residential Parcels			
Traditional LOS D	37	9 bldgs. (Includes 17 Businesses)	6	\$12.4	147	-Impacts 7 commercial bldgs. (15 businesses total) due to direct physical conflicts. -Impacts 2 commercial bldgs. (2 businesses total) due to greater than 50% number of parking stalls loss. -Impacts Union Pacific Railroad.
Traditional LOS D: Reduced Impacts	36	6 bldgs. (Includes 14 Businesses)	3	\$9.0	101	-Impacts 5 commercial bldgs. (13 businesses total) due to direct physical conflicts. -Impacts 1 commercial bldg. due to greater than 50% number of parking stalls loss. -Impacts Union Pacific Railroad
Nontraditional LOS D: NW Quadrant	19	3 bldgs. (Includes 9 Businesses)	14	\$3.7	23	-Impacts 3 commercial bldgs. (9 businesses total) due to direct physical conflicts.
Nontraditional LOS D: SW Quadrant	22	3 bldgs.	0	\$1.9	80	-Impacts 1 commercial bldg. due to direct physical conflicts. -Impacts 2 commercial bldgs. due to greater than 50% number of parking stalls loss.
Nontraditional LOS D: SE Quadrant	20	1 bldg.	19	\$1.1	10	-Impacts 1 commercial bldg. due to direct physical conflicts. -Impacts 19 mobile homes due to direct physical conflicts.