




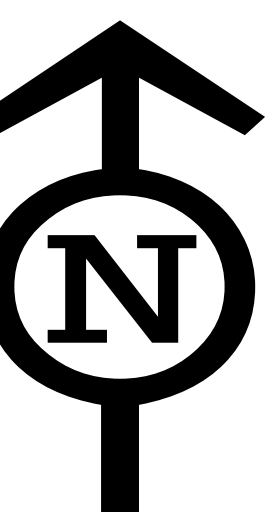
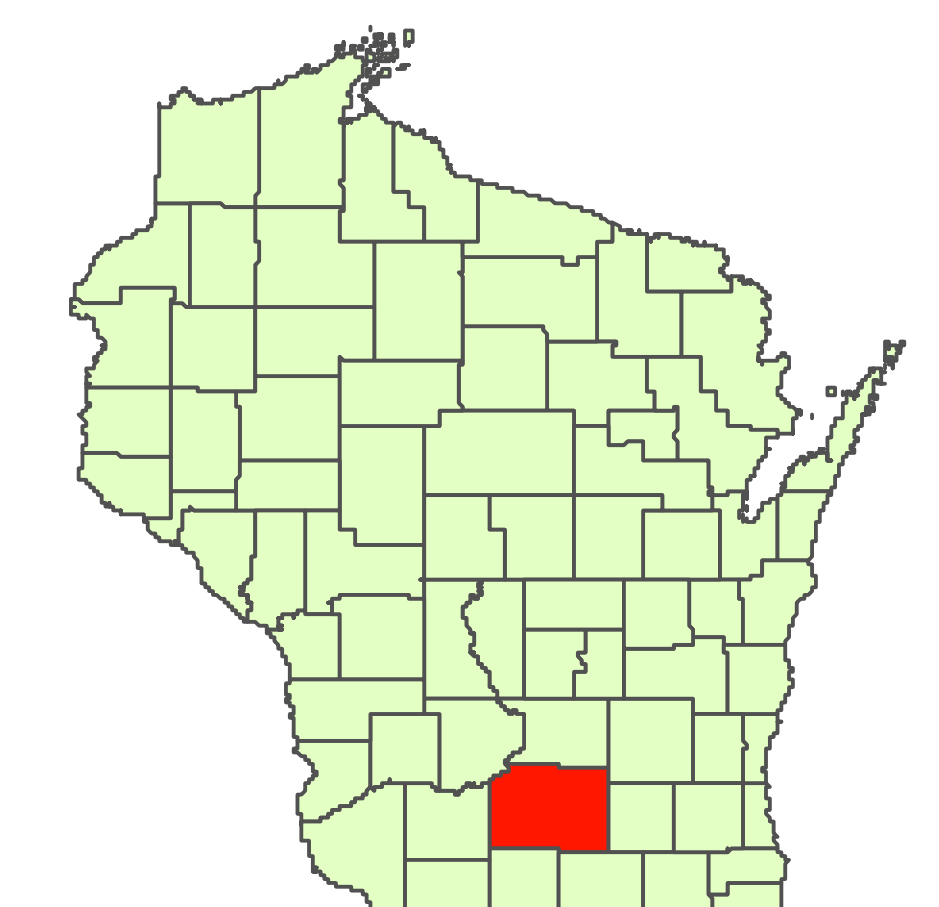


US 12/18

Madison - Cambridge  
I-39/90 to County N  
Dane County

WisDOT ID:  
3080-10-01

-  US 12/18
-  Roads
-  Municipal Boundary
-  Wetlands
-  Water



**WEST ALTERNATIVE 2b - TIGHT DIAMOND INTERCHANGE AT CTY AB / TWO-WAY FRONTAGE ROAD SOUTH WITH EAST CONNECTION TO AB**

REFER TO EAST ALTERNATIVES

2

2

**POSTED SPEEDS:**

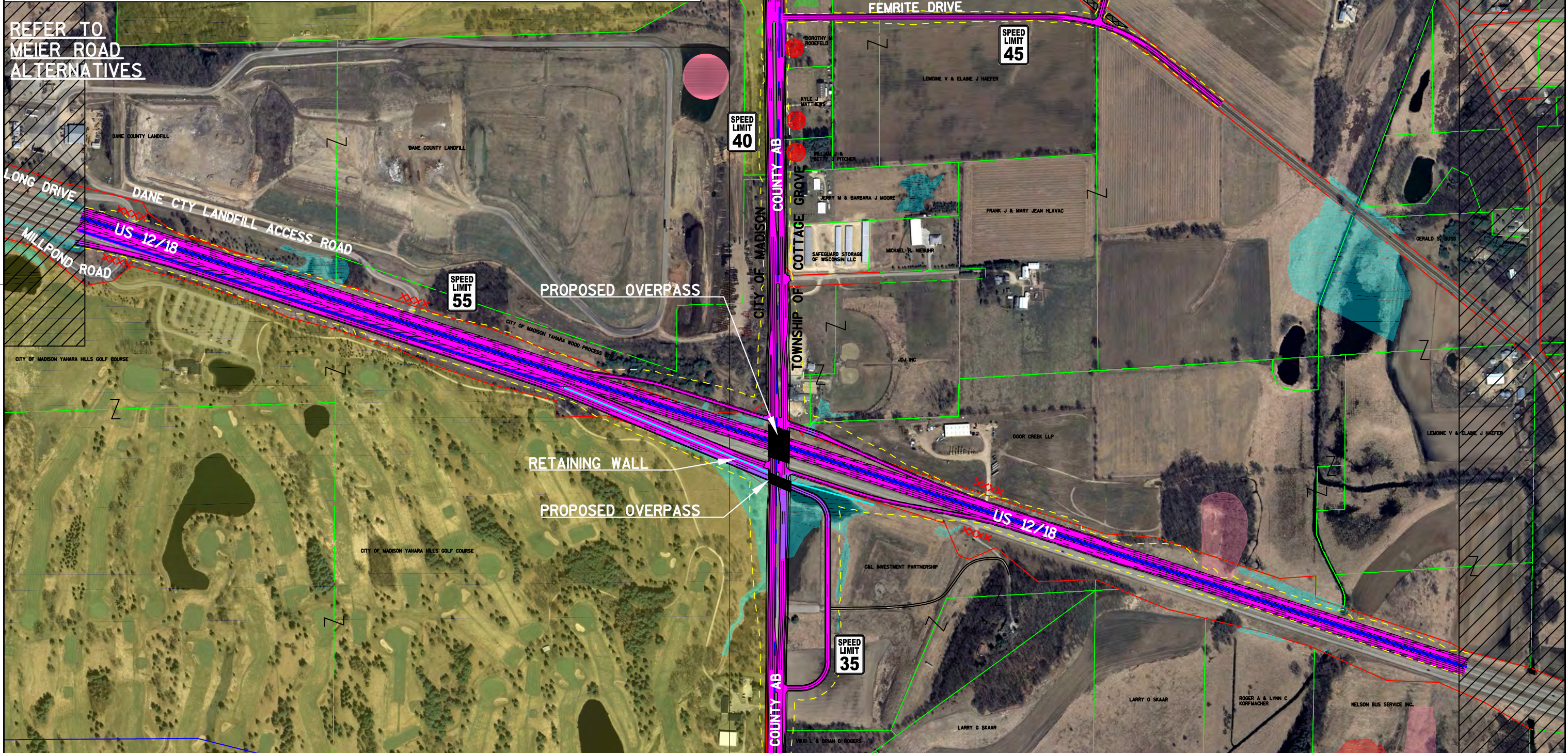
US 12/18.....	55MPH
CTY AB.....	40MPH
FEMRITE DRIVE.....	45MPH
FRONTAGE ROAD.....	35MPH
HOPE ROAD.....	45MPH

**LEGEND**

	PROPOSED ROADWAY		ACCESS REMOVED
	PROPERTY LINE		ARCHAEOLOGICAL SITE
	BARRIER		4F RESOURCE
	WATER CHANNEL		HISTORICAL RESOURCE
	EXISTING ROW		SLOPE INTERCEPT
	WETLAND		OBLITERATE OLD ROAD
	POTENTIAL RELOCATION		



REFER TO MEIER ROAD ALTERNATIVES



PROJECT NO: 3080-10-01

HWY: US 12/18

COUNTY: DANE

WEST ALT 2b - TIGHT DIA. INT. AT AB/2-WAY FR SOUTH

SHEET \_\_\_\_\_ E

**WEST ALTERNATIVE 3 - TIGHT DIAMOND INTERCHANGE NORTH/LOOP RAMP SOUTH AT CTY AB/TWO-WAY FRONTAGE ROAD SOUTH OF US 12/18**

REFER TO EAST ALTERNATIVES

2

2

**POSTED SPEEDS:**

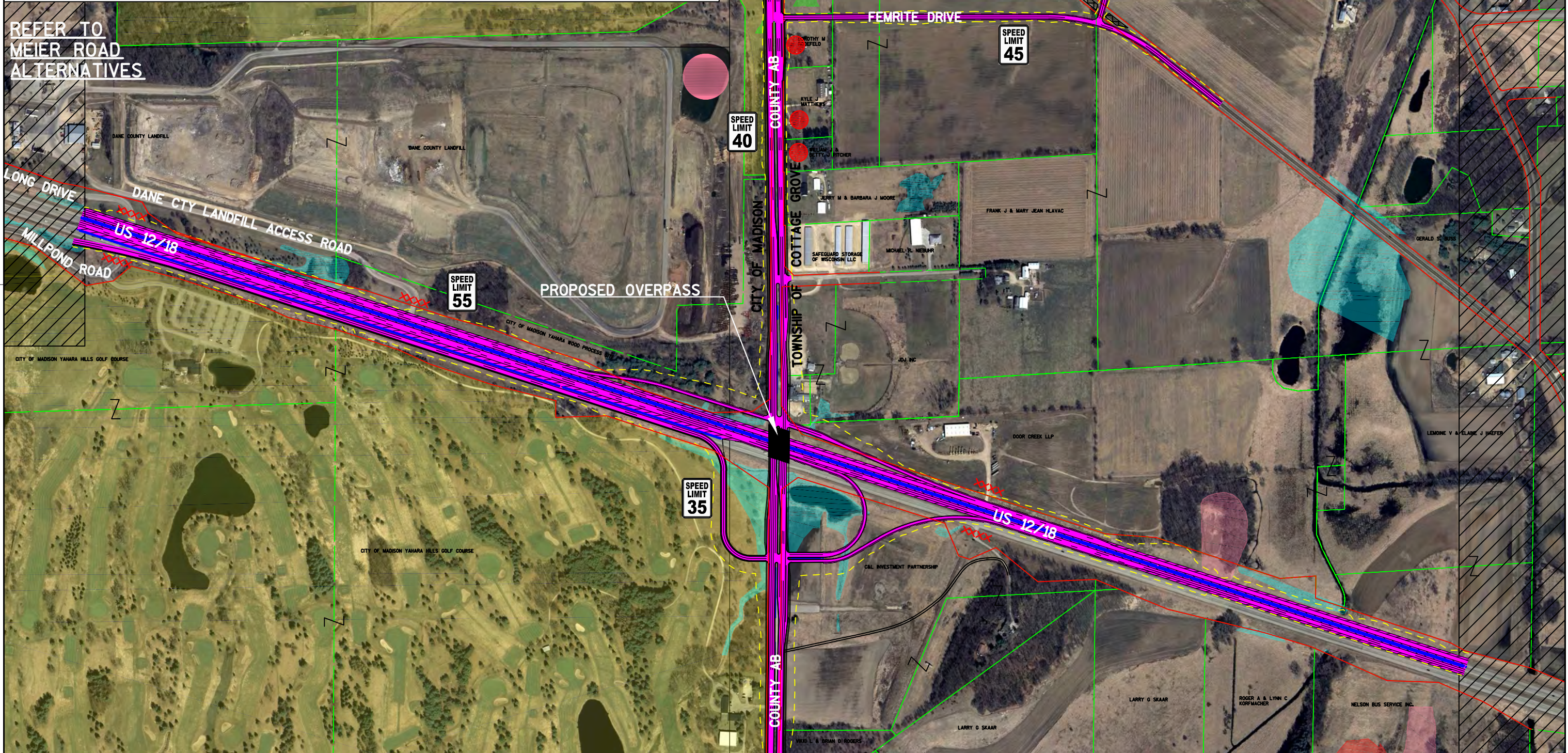
US 12/18.....	55MPH
CTY AB.....	40MPH
FEMRITE DRIVE.....	45MPH
FRONTAGE ROAD.....	35MPH
HOPE ROAD.....	45MPH

**LEGEND**

	PROPOSED ROADWAY		ACCESS REMOVED
	PROPERTY LINE		ARCHAEOLOGICAL SITE
	BARRIER		4F RESOURCE
	WATER CHANNEL		HISTORICAL RESOURCE
	EXISTING ROW		SLOPE INTERCEPT
	WETLAND		OBLITERATE OLD ROAD
	POTENTIAL RELOCATION		



REFER TO MEIER ROAD ALTERNATIVES



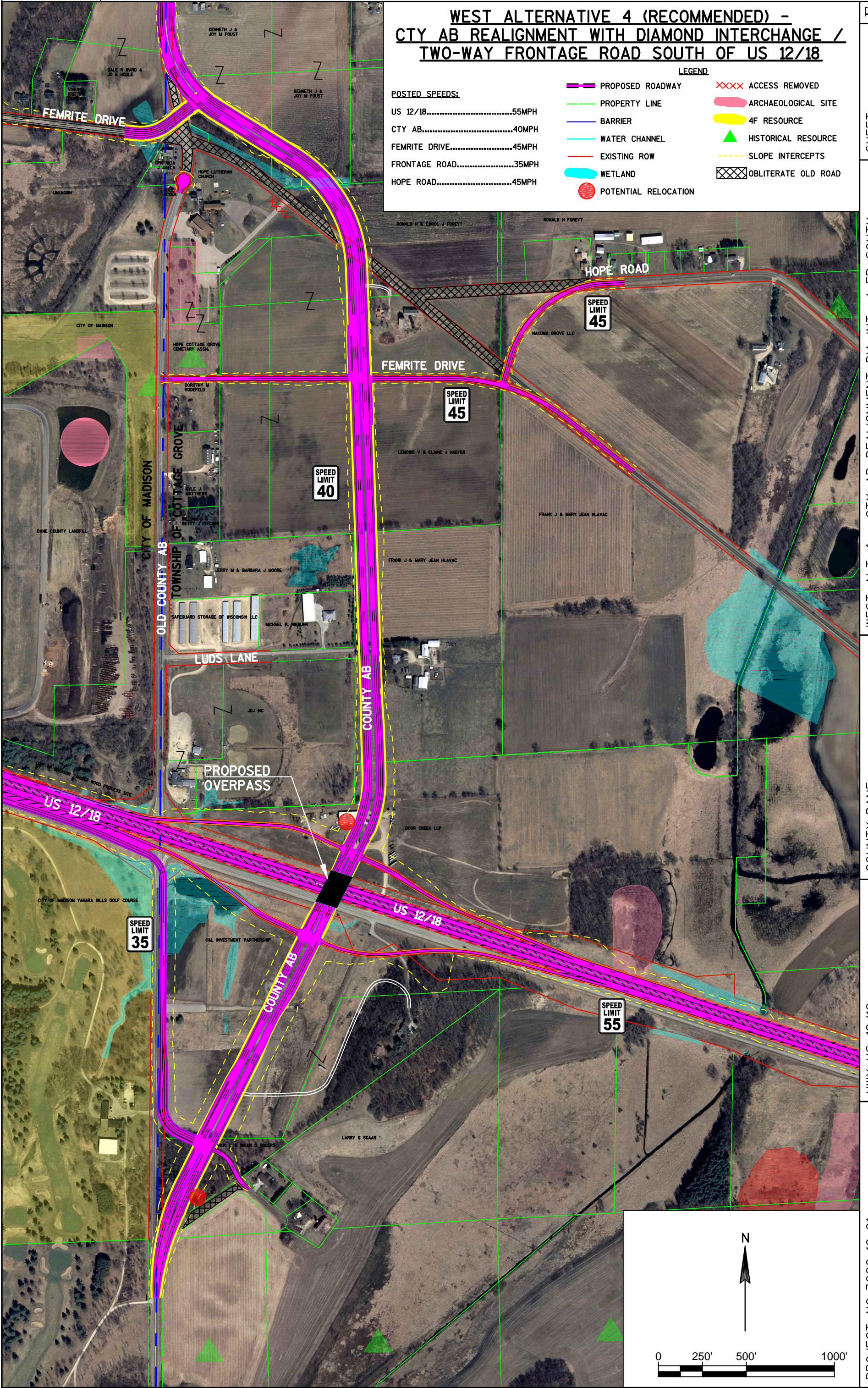
# WEST ALTERNATIVE 4 (RECOMMENDED) - CTY AB REALIGNMENT WITH DIAMOND INTERCHANGE / TWO-WAY FRONTAGE ROAD SOUTH OF US 12/18

### POSTED SPEEDS:

US 12/18.....	55MPH
CTY AB.....	40MPH
FEMRITE DRIVE.....	45MPH
FRONTAGE ROAD.....	35MPH
HOPE ROAD.....	45MPH

### LEGEND

- PROPOSED ROADWAY
- PROPERTY LINE
- BARRIER
- WATER CHANNEL
- EXISTING ROW
- WETLAND
- POTENTIAL RELOCATION
- XXXX ACCESS REMOVED
- ARCHAEOLOGICAL SITE
- 4F RESOURCE
- ▲ HISTORICAL RESOURCE
- SLOPE INTERCEPTS
- OBLITERATE OLD ROAD



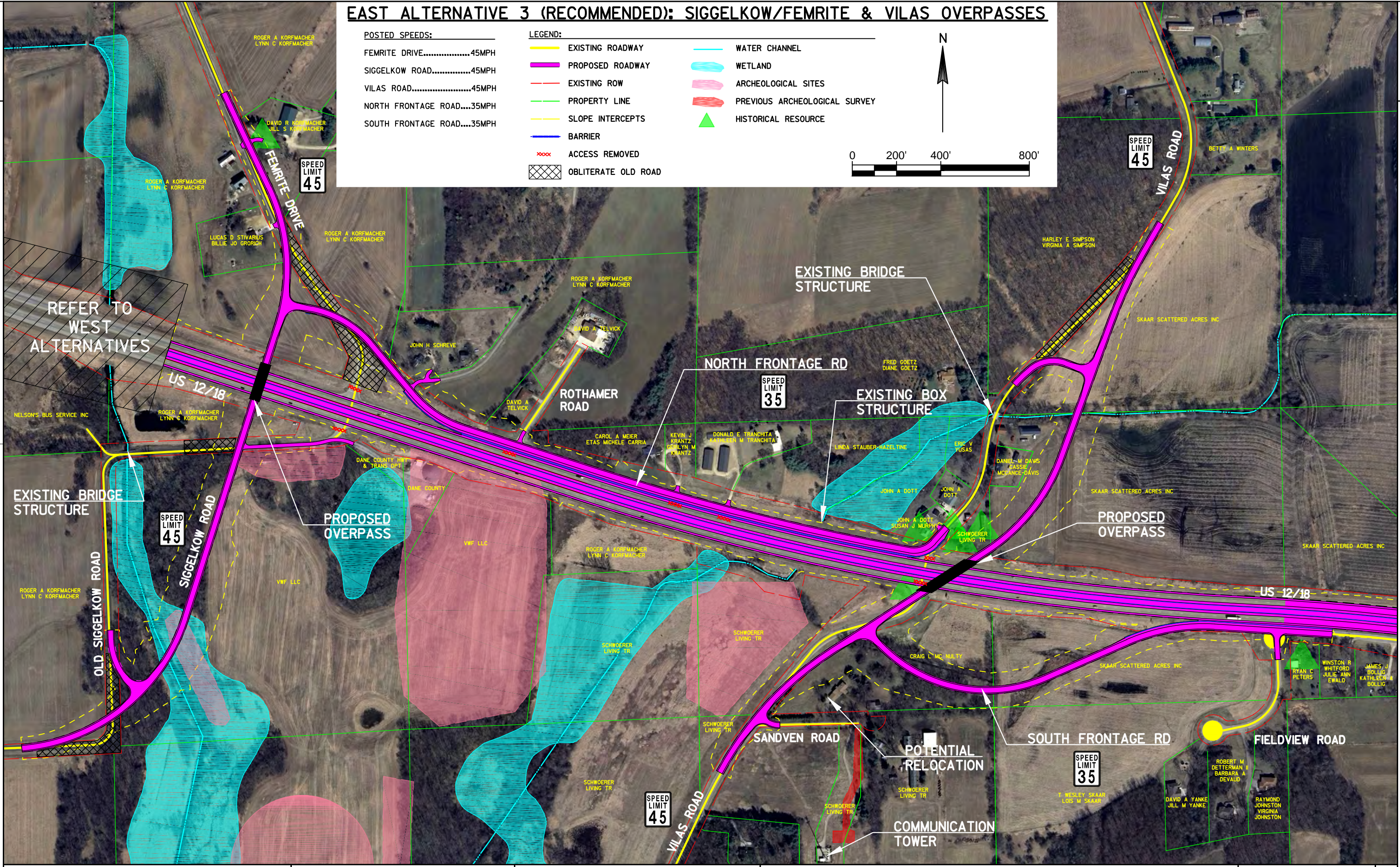
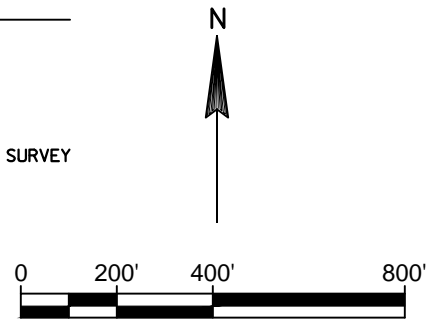
# EAST ALTERNATIVE 3 (RECOMMENDED): SIGGELKOW/FEMRITE & VILAS OVERPASSES

**POSTED SPEEDS:**

FEMRITE DRIVE.....	45MPH
SIGGELKOW ROAD.....	45MPH
VILAS ROAD.....	45MPH
NORTH FRONTAGE ROAD....	35MPH
SOUTH FRONTAGE ROAD....	35MPH

**LEGEND:**

	EXISTING ROADWAY		WATER CHANNEL
	PROPOSED ROADWAY		WETLAND
	EXISTING ROW		ARCHEOLOGICAL SITES
	PROPERTY LINE		PREVIOUS ARCHEOLOGICAL SURVEY
	SLOPE INTERCEPTS		HISTORICAL RESOURCE
	BARRIER		
	ACCESS REMOVED		
	OBLITERATE OLD ROAD		



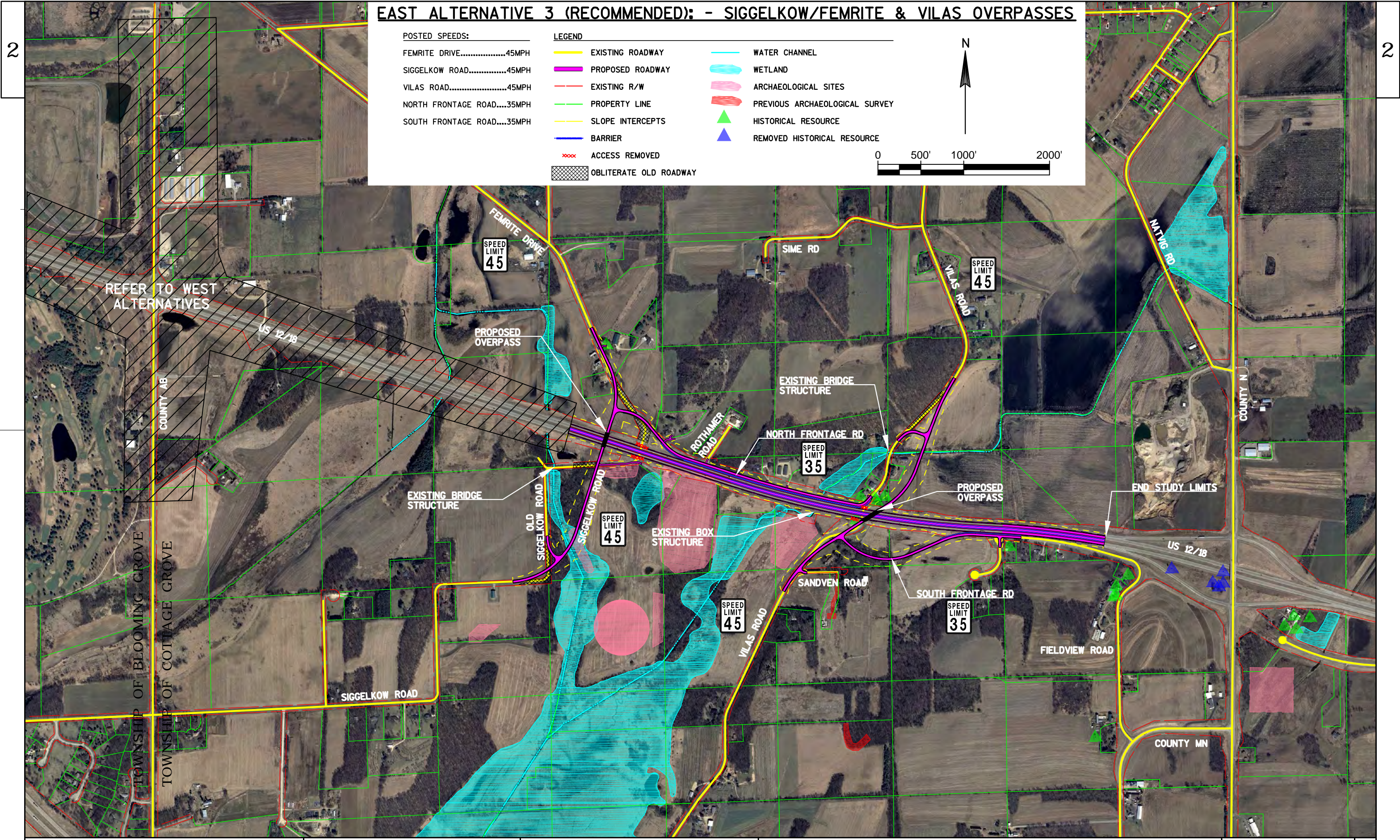
**EAST ALTERNATIVE 3 (RECOMMENDED): - SIGGELKOW/FEMRITE & VILAS OVERPASSES**

**POSTED SPEEDS:**

- FEMRITE DRIVE.....45MPH
- SIGGELKOW ROAD.....45MPH
- VILAS ROAD.....45MPH
- NORTH FRONTAGE ROAD.....35MPH
- SOUTH FRONTAGE ROAD.....35MPH

**LEGEND**

- EXISTING ROADWAY
- PROPOSED ROADWAY
- EXISTING R/W
- PROPERTY LINE
- SLOPE INTERCEPTS
- BARRIER
- xxx ACCESS REMOVED
- OBLITERATE OLD ROADWAY
- WATER CHANNEL
- ▭ WETLAND
- ▭ ARCHAEOLOGICAL SITES
- ▭ PREVIOUS ARCHAEOLOGICAL SURVEY
- ▲ HISTORICAL RESOURCE
- ▲ REMOVED HISTORICAL RESOURCE



**US 12/18 Freeway Conversion Study  
I-39/90 to County N  
Dane County**

**Preliminary Alternative Impacts**

	West Section			East Section
	Alternative 2b	Alternative 3	Alternative 4 (Recommended)	Alternative 3 (Recommended)
<b>Roadway Centerline Length</b>				
US 12/18 (miles)	1.7	1.7	1.7	1.7
County AB Ramps (miles)	1.4	1.4	1.4	N/A
County AB (miles)	1.2	1.2	1.6	N/A
Local Roads (miles)	2.5	2.3	3.0	2.6
<b>Opinion of Probable Costs</b>				
Construction (Million \$)	\$36.9	\$32.2	\$34.0	\$17.7
Right of Way (Million \$)	\$4.5	\$5.8	\$7.5	\$0.4
Relocation (Million \$)*	\$2.1	\$2.1	\$1.0	\$0.0
Total (Million \$)	\$43.5	\$40.1	\$42.5	\$18.1
<b>Right of Way Requirements</b>				
Wetland (acres)	7	8	9	2
4(f) Land (acres)	7	10	0	0
Ag Land (acres)	8	8	44	19
Other (acres)	31	31	34	12
Total (acres)	53	57	87	33
<b>Farm Impacts</b>				
R/W Required (number of farms)	3	3	8	13
Severances (number of farms)	1	1	2	2
<b>Relocations</b>				
Business	1	1	1	0
Farm	0	0	0	0
Residential	4	4	1	1
<b>Other Impacts</b>				
Possible Historical Sites (number)**	3	3	4	7
Possible Arch Sites (number)**	2	2	3	3
Possible Hazardous Materials Sites (number)**	5	5	5	4

\* Relocation costs were estimated at 2.5 times the fair market value

\*\* Numbers of historical, arch, and haz-mat sites are based on literature searches; will be updated once field work is complete

**US 12/18 FREEWAY CONVERSION STUDY  
RECOMMENDED ALTERNATIVE**

