

US 18/151 Freeway Conversion Plan

South of US 18/151 from Industrial Drive to County K
Village of Barneveld

Project ID: 1200-08-01
Iowa County

Public Involvement Meeting

August 24, 2016



Presentation Agenda

- Study team
- Study background and review
- Wis. Stat. 84.295 overview
- Schedule and next steps

Study Team

WisDOT Southwest Region

Tom Koprowski – Project Manager

(608) 346-3869

Thomas.Koprowski@dot.wi.gov

Short Elliott Hendrickson Inc. (SEH)

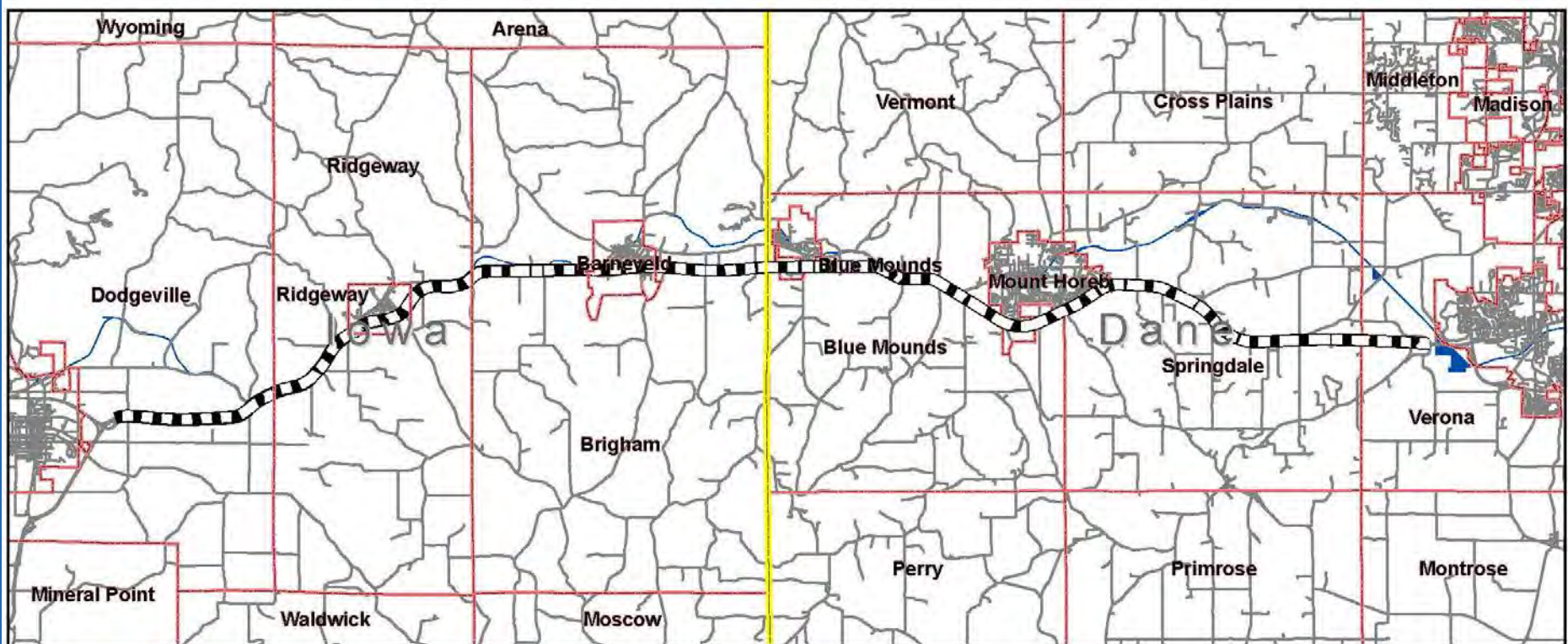
Darren Fortney, AICP – Project Manager

(608) 620-6191

dfortney@sehinc.com








Study Corridor



Study Location

Legend

-  US 18/151 Study Corridor
-  Roads
-  Dane/Iowa County Boundary
-  Municipal Boundary
-  Military Ridge Trail Right-of-Way

Scope of US 18/151 Freeway Conversion Plan

- ✓ Long-term freeway conversion and management
 - ✓ Corridor planning
 - ✓ Needs identification and alternatives analysis
 - ✓ Environmental Assessment (EA)
 - ✓ Approved on May 13, 2014
- EA Re-evaluation (Barneveld Area)
- Implement Wis. Stat. 84.295
 - Official freeway designation
 - Official mapping/recording on property deeds

Preferred Alternative From 2014 Approved EA

Iowa County



Dane County



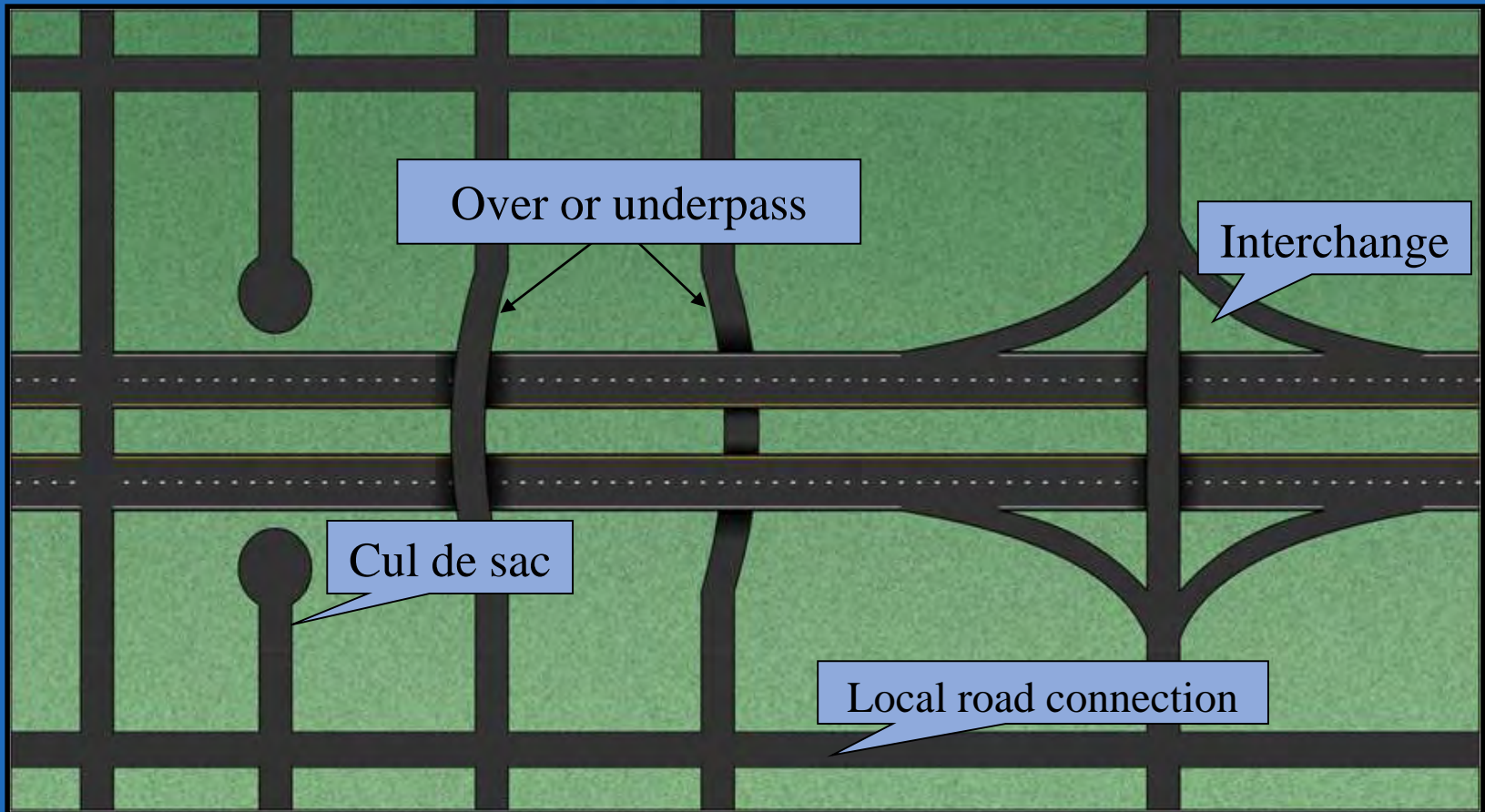
Study History and Current Status

- FONSI (Finding of No Significant Impact) was obtained in 2014.
- Since the approval of the original EA in 2014, an area of the project has been the subject of possible design refinements; specifically, the realignment of County K.
- This area is south of US 18/151, from Industrial Drive to County K in the village of Barneveld.
- Currently, an EA Re-evaluation is being prepared for the Barneveld area.

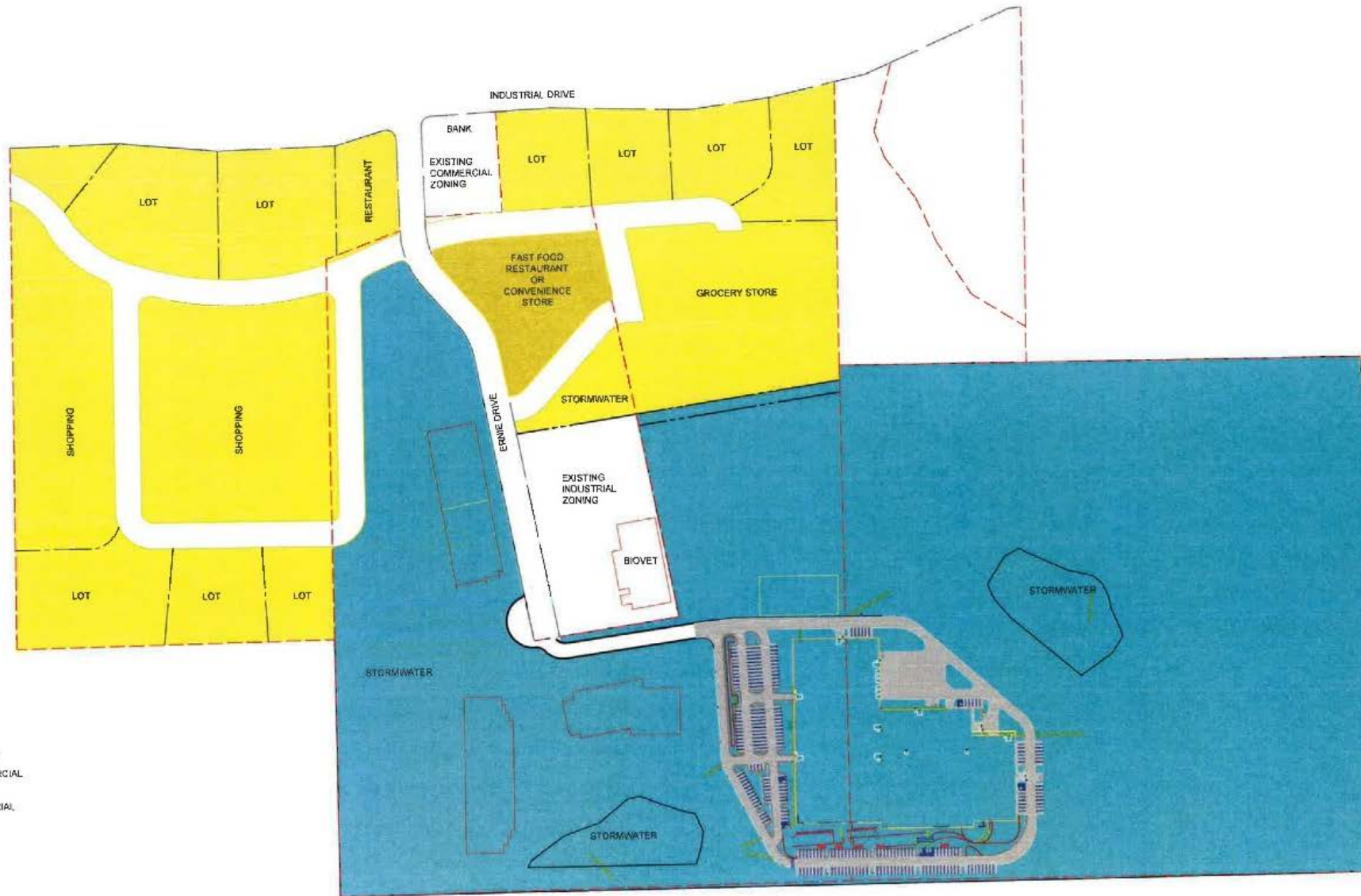
Input to Date

- Coordination with local businesses, municipalities, local and state agencies
- To date, received responses from the following stakeholders:
 - WDNR
 - DATCP
 - Iowa County
 - Iowa County Emergency Management
 - Iowa County Highways
 - Vortex

Improvements Needed for Freeway Conversion



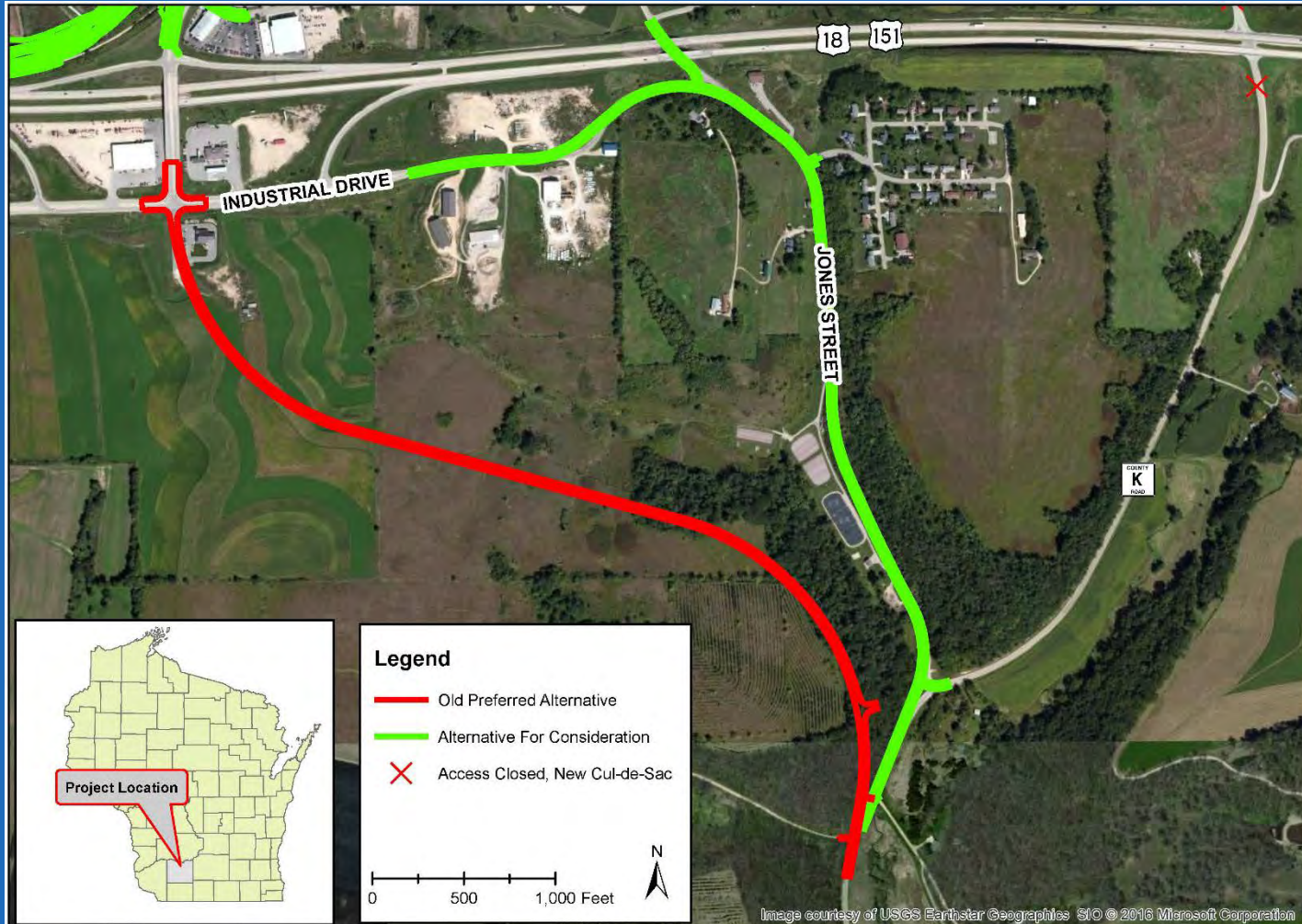
Vortex Plans



Vortex Plans



Barneveld Study Area



Project: 1200-08-01
 Print Date: 8/15/2016
 Map by: nday
 Projection: WISCRS,
 Iowa County

Study Location Map - County K Realignment - EA Re-evaluation
 Village of Barneveld, Iowa County, Wisconsin

Figure
 1

What is Wis. Stat. 84.295 & the official map?

- State statute (Wis. Stat. 84.295) authorizes WisDOT to create and update an official map for future freeways and expressways.
- An official map allows WisDOT to preserve, protect, and set aside future right-of-way for US 18/151 where freeway design is planned.
- An official map also informs and enables landowners, the public, and local agencies to plan their future in ways that won't conflict with the future highway improvements.



Official Map Process

- A draft map is created after public meetings, design, and coordination with land owners
- Public hearing is held for official review and comment
- Map is finalized and recorded in county records
- Mapped land remains in private ownership
- Description of each parcel is recorded so current and future landowners are aware that an official map exists



60-Day Notice for Improvements

- Must notify WisDOT 60 days in advance of any improvements on the portion that is officially mapped
- Includes constructing or moving a new structure or otherwise altering an existing one – only if on/in officially mapped portion
- WisDOT will make determination to allow alteration or to move forward with purchasing property at fair market value
- If alternations are made without prior notification, WisDOT is not required to compensate owner for that improvement if/when WisDOT purchases property



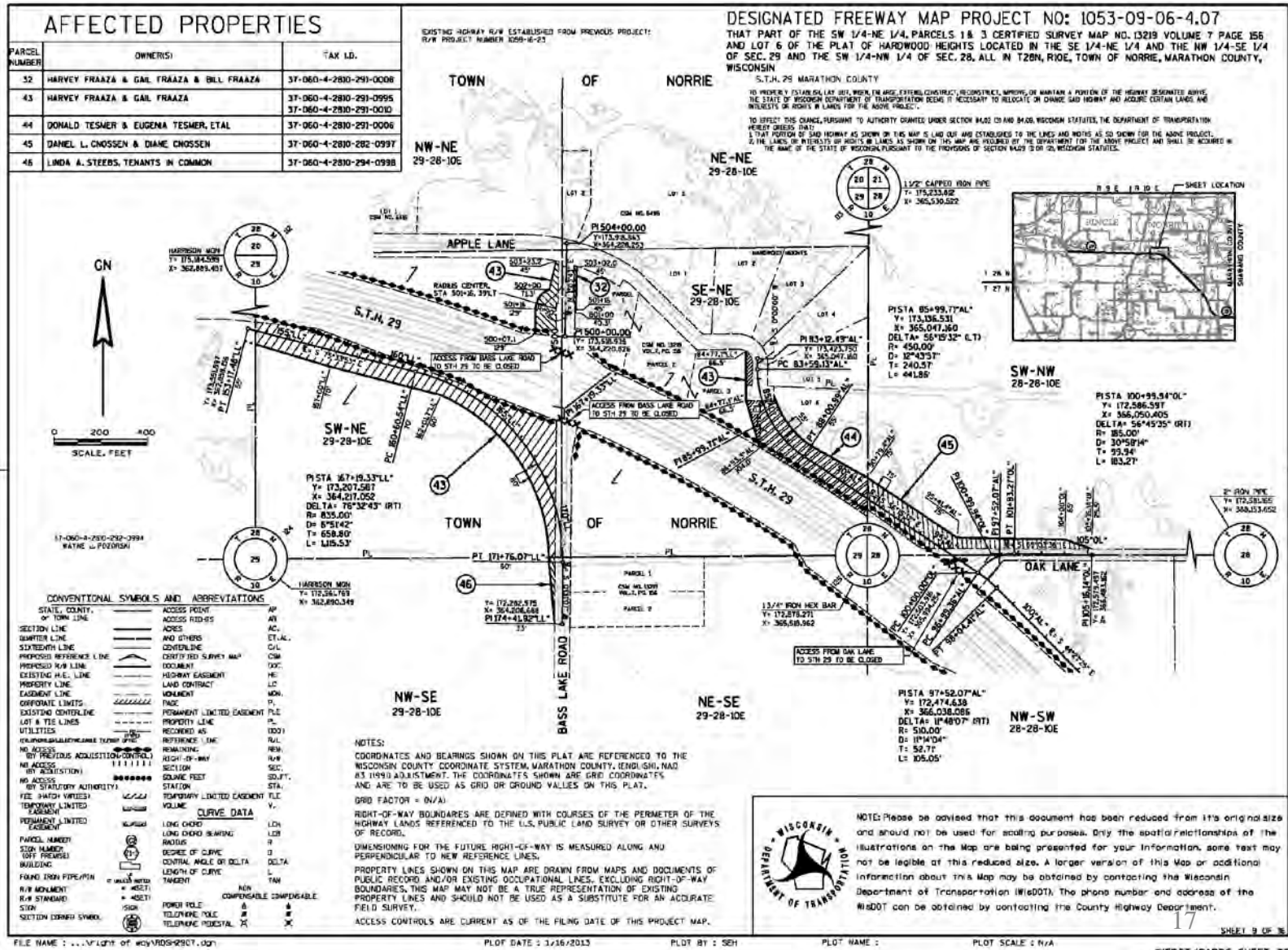
Official Map Example (Wis. Stat. 84.295)



- 200 acre farm
- 10 acres would be officially mapped
- Property owner still owns original 200 acres
- WisDOT notification required before improvements made on officially mapped 10 acres



Official Map Example (Wis. Stat. 84.295)



Official Map Example (Wis. Stat. 84.295)

Document Number

DESIGNATED FREEWAY MAP

Wisconsin Department of Transportation
DT2203 2005 s.84.295(10) Wis. Stats.

The Wisconsin Department of Transportation, pursuant to the provisions of s.84.295(10) Wis. Stats., approved the attached Map on establishing the needed rights-of-way to preserve real estate for future construction or conversion of _____ as a freeway and to prevent conflicting costly economic development on areas of the lands to be available as rights-of-way when needed for future construction.

The approved Map shows the location of the planned freeway and the approximate widths of the rights-of-way. The Map also shows the existing highways, the property lines and record owners of lands needed. The Map is related to department project ID _____.

The Department of Transportation designated this section of highway as a freeway by the Finding, Determination, and Order recorded as _____ in the _____ County Deeds Registry.

The lands affected by the Map are listed in their respective towns and sections, in a direction from West to East as follows:

This space is reserved for recording data.

Return to _____

A larger copy of this Map or additional information about this Map may be obtained by contacting the Wisconsin Department of Transportation (DOT). The telephone number and address of the nearest DOT office may be obtained by contacting the County Highway department.

Wisconsin Department of Transportation

(Authorized Representative Signature)

(Date)

(Print Name)

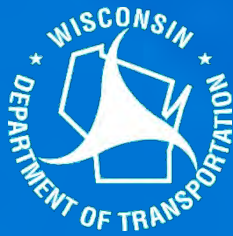
Project ID _____

This document need not be notarized as per s.706.001(2)(a) Wis. Stats.

County _____

This instrument was drafted by the Wisconsin Department of Transportation.





Thank You!

