

→ Hulbert Creek Fishery Area



Split Diamond Interchange Alternative



Trumpet Interchange Alternative (Preferred Alternative)

Legend

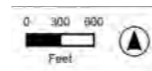
- Parks, Recreational Areas, Wildlife and Waterfront Refuges
- Proposed Temporary Limited Easement
- Potential Right of Way
- Existing Right of Way
- Project Linework

→ Rocky Arbor State Park



Legend

- Parks, Recreational Areas, Wildlife and Waterfront Refuges
- Existing Right of Way
- Potential Right of Way
- Proposed Temporary Limited Easement
- Historic Boundary
- Project Linework



I-39/90/94 Corridor Study

→ Section 4(f)

Special consideration for public parks, recreation areas, wildlife refuges and historic sites



Section 4(f) refers to the original section within the U.S. Department of Transportation Act of 1966 which provided for consideration of park and recreation lands, wildlife and waterfowl refuges and historic sites during transportation project development. The freeway and interchange alternatives for the I-39/90/94 Corridor Study potentially impact six Section 4(f) properties, summarized below and illustrated in this handout. Tonight, we are seeking your input on the effects of study alternatives on these resources. Your comments will help the study team complete the analyses for the Environmental Impact Statement.

SUMMARY OF SECTION 4(F) IMPACTS

Property	Impacts
Glacial Drumlin State Trail (anticipated extension over I-39/90)	Temporary closure during construction to widen bridge
Baraboo River Waterfowl Production Area	1.3 acres temporary easement; Changes in flood elevations
Pine Island Wildlife Area	7.3 acres temporary easement 2.5 acres acquired
Mirror Lake State Park	1 acre temporary easement
Hulbert Creek Fishery Area	WIS 13 Trumpet interchange alternative (Preferred Alternative): 0.1 acres temporary easement WIS 13 Split Diamond interchange alternative: 0.4 acres temporary easement 0.8 acres acquired
Rocky Arbor State Park	0.8 acres temporary easement

How can I provide feedback?

- 1 Provide testimony at tonight's public hearing. Private verbal testimony with a court reporter is available throughout the hearing. Public verbal testimony will be accepted after the study presentation.
- 2 Use the comment forms available at tonight's meeting and hand them in to a project team member or mail them in with our provided self-addressed envelopes.
- 3 Provide comments via WisDOT's website at [tinyurl.com/InterstateStudyPI](https://www.tinyurl.com/InterstateStudyPI) or scan the QR code. Scroll down on the web page to the **Comment now** link.
- 4 Submit comments and feedback to the I-39/90/94 Corridor Study Project Manager David Schmidt via email at David2.Schmidt@dot.wi.gov or (608) 246-3867.



→ Glacial Drumlin Trail

Note: Trail anticipated to be in place before construction starts



Legend

- Parks, Recreational Areas, Wildlife and Waterfront Refuges
 - Anticipated Future Trail Alignment
 - Existing Right of Way
 - Potential Right of Way
 - Project Linework
- 0 150 300 Feet

→ Pine Island Wildlife Area



Legend

- Parks, Recreational Areas, Wildlife and Waterfront Refuges
- Anticipated Future Trail Alignment
- Existing Right of Way
- Potential Right of Way
- Project Linework
- Proposed Temporary Limited Easement

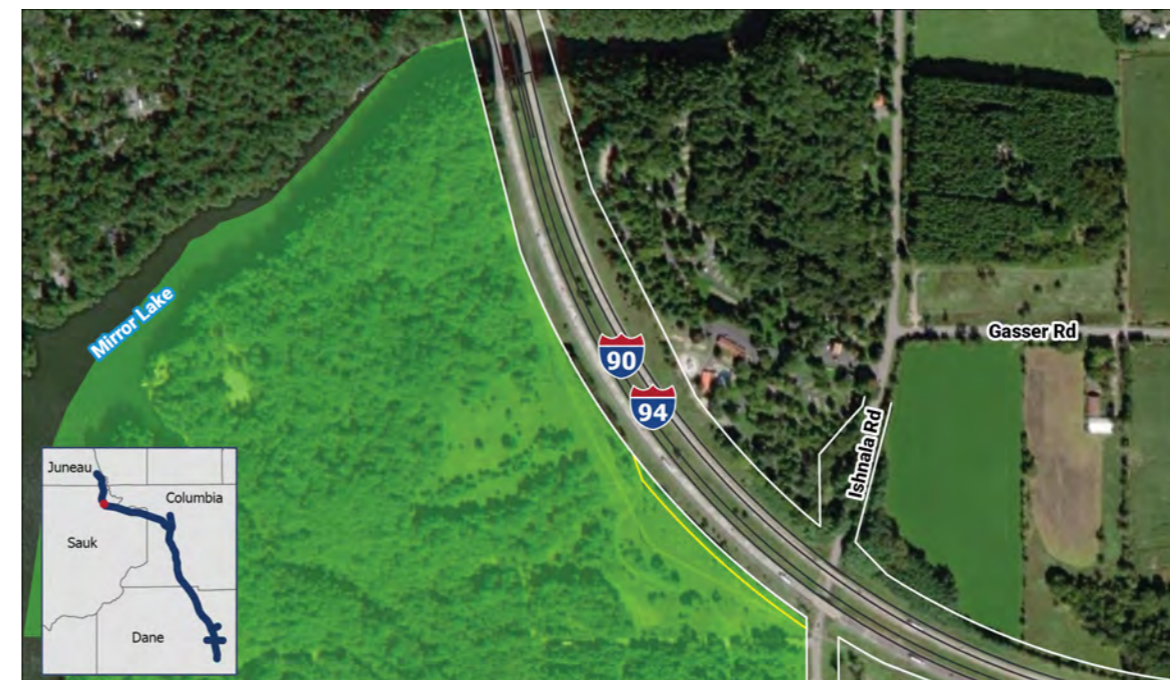
→ Baraboo River Waterfowl Production Area



Legend

- Parks, Recreational Areas, Wildlife and Waterfront Refuges
 - Anticipated Future Trail Alignment
 - Existing Right of Way
 - Potential Right of Way
 - Project Linework
 - Proposed Temporary Limited Easement
- 0 300 600 Feet

→ Mirror Lake State Park



Legend

- Parks, Recreational Areas, Wildlife and Waterfront Refuges
 - Anticipated Future Trail Alignment
 - Existing Right of Way
 - Potential Right of Way
 - Project Linework
 - Proposed Temporary Limited Easement
- 0 150 300 Feet