

**PRELIMINARY ALTERNATIVES**

Typical Section: Cass St – 2nd St (0.7 mi)  
Improvement Concept: Reconstruction

**ALTERNATIVE**

Existing Typical Section



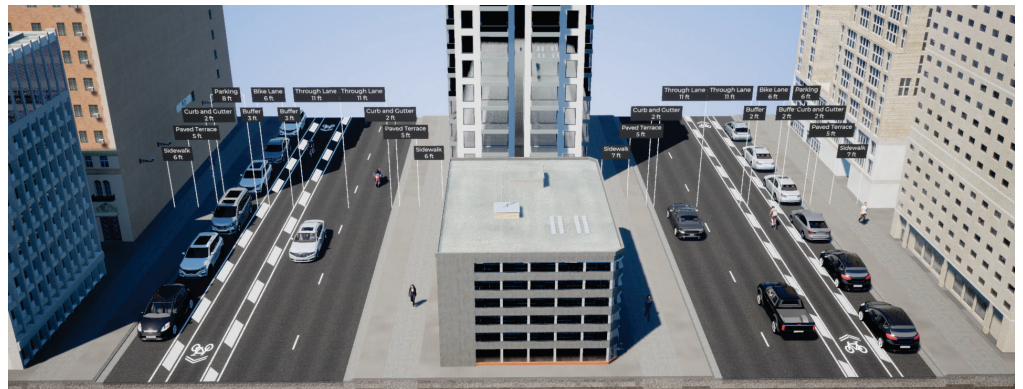
**Existing Typical Section**  
Total Width (Curb to Curb): 46 ft (SB US 53), 42 ft (NB US 53)

**ALTERNATIVE**

Remove Parking (Buffered Bike Lane)

**NOTES**

Parking Usage: Frequent



**Remove Parking (Buffered Bike Lane)**  
Total Width (Curb to Curb): 46 ft (SB US 53), 42 ft (NB US 53)

**ALTERNATIVE**

Narrow Parking, Widen Sidewalks



**Narrow Parking, Widen Sidewalks**  
Total Width (Curb to Curb): 38 ft (SB US 53), 38 ft (NB US 53)

