



Coulee Region Transportation Study

Planning and Environment Linkages (PEL)

PIM #5

January 27 & 28, 2016



Innovative Solutions for the 21st Century

Study Team

Andrew Winga, PE

WisDOT Project Manager

Angela Adams, PE

WisDOT Project Chief

Steve Flottmeyer, PE

WisDOT Project Supervisor

Francis Schelfhout

WisDOT Bike and Pedestrian Coordinator

Steve Vetsch

WisDOT Environmental Coordinator

Darren Fortney, AICP, NCI, LEED-GA

SEH Consultant Project Manager

Jim Hanson, PE, PTOE

SEH Project Consultant

Nate Day, AICP

SEH Project Consultant

Marty Falk

SEH Project Consultant

Sarah Morrison

SEH Project Consultant



Meeting Goals

- ▶ Visit Work Stations
- ▶ Short Presentation
- ▶ Town Hall Meeting
- ▶ Open Q & A



Public Involvement Meeting #1

Existing Conditions

- ▶ Population
- ▶ Employment
- ▶ Crashes
- ▶ Infrastructure
- ▶ Existing Traffic Counts
- ▶ Existing Level Of Service(LOS)



Innovative Solutions for the 21st Century



Public Involvement Meeting #2

Future Conditions

- ▶ Projected Population/Housing Growth
- ▶ Future Traffic Counts
- ▶ Future Level Of Service (LOS)
- ▶ Asked for comments
 - 550 received



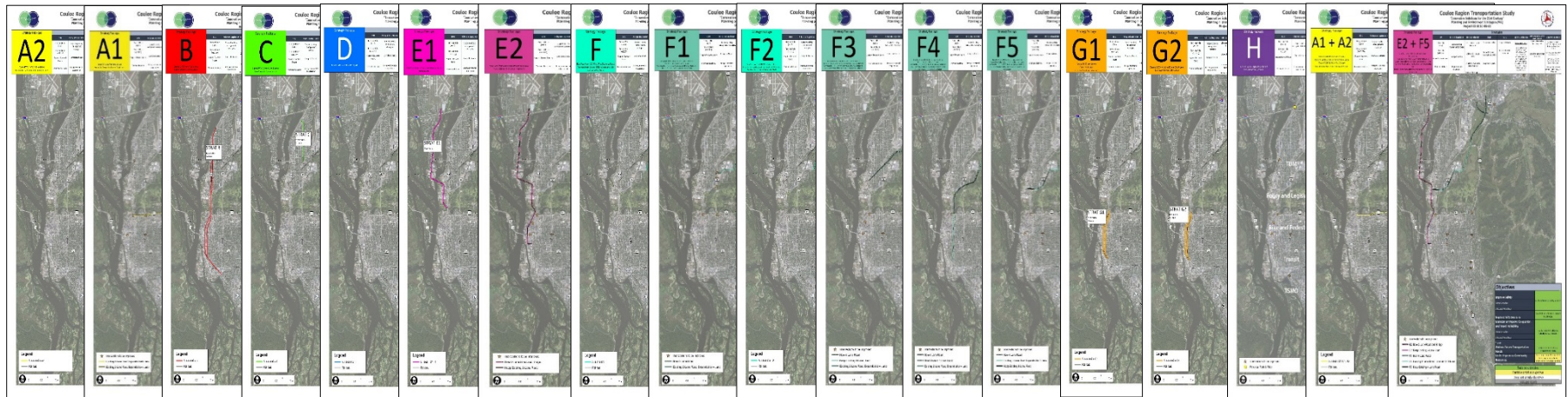
Innovative Solutions for the 21st Century



Public Involvement Meeting #3

All Strategy Packages

- ▶ Created strategy Packages from public comments

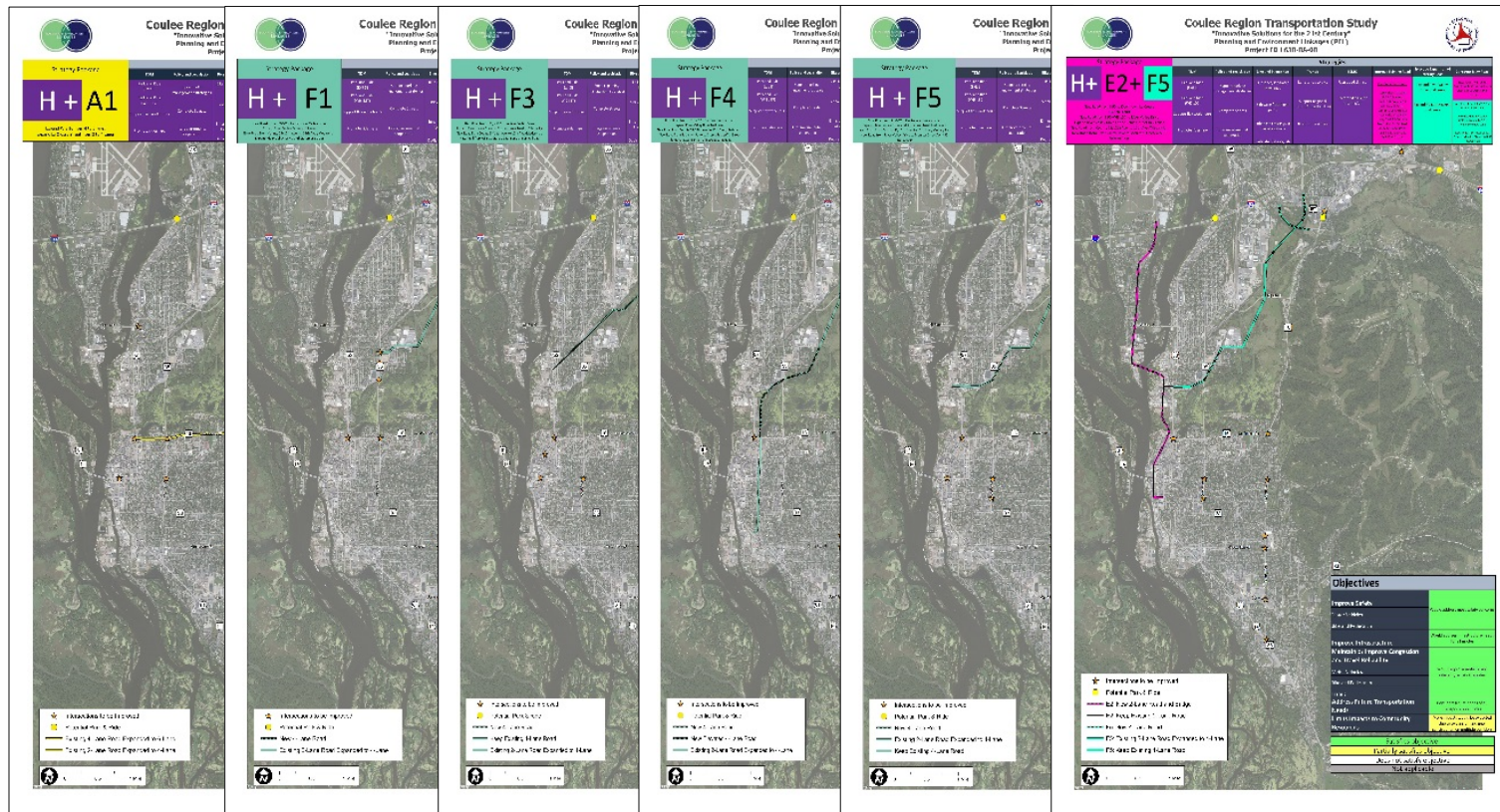


Innovative Solutions for the 21st Century



Public Involvement #4

Refined Strategy Packages



Innovative Solutions for the 21st Century



Strategy Package

H + A1

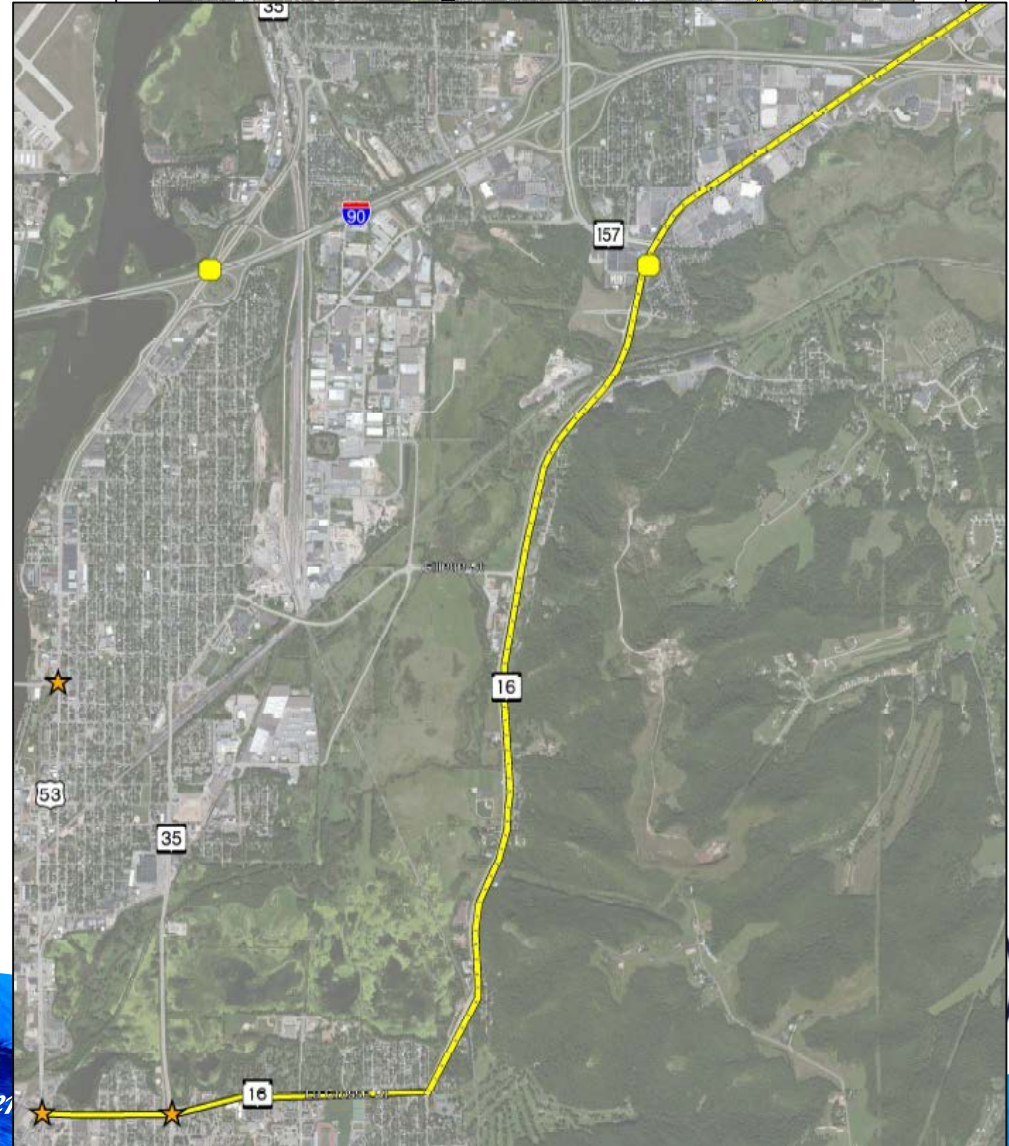
WIS 16 Expansion

- 6-lane WIS 16 from I-90 to La Crosse Street
- 4-lane La Crosse Street
- 25-45 mph roadways
- Maintains current level of operations on WIS 16
- Some minor operational improvements to WIS 35 & US 53
- Some added operational pressure to Losey Blvd



Innovative Solutions for the 21st Century

Strategy Package		Coulee Region Transportation Study "Innovative Solutions for the 21st Century" Planning and Environment Linkages (PEL) Project ID 1630-08-00						
Strategy Package		Strategies						
H + A1		TDR	Policy and Legislation	Bike and Pedestrian	Transit	Transit	Transit	Transit
		Plan and Build Build and Operate Plan and Operate Support for transit bus to Priority development	Support parking in strategic locations Car share program Intermodal transit connector	Bike and pedestrian separated bike lanes Bike and pedestrian separated paths Enhanced crossings at key locations Bike and pedestrian separated paths	Capital bus service Support regional transit activity (RTA) Bus rapid transit Bike and pedestrian separated paths	Support transit in strategic locations Support transit in strategic locations Support transit in strategic locations	Support transit in strategic locations Support transit in strategic locations Support transit in strategic locations	Support transit in strategic locations Support transit in strategic locations Support transit in strategic locations
		Expand WIS 16 from I-90 to La Crosse Street Expand La Crosse Street from 2 to 4 lanes						



Strategy Package

H + F1

Central Corridor

- Extend US 53 south, connect to WIS 35 at St. Cloud Street
- 4-lane roadway
- 25-45 mph roadways
- Significant operational improvements to WIS 16
- Removes bottleneck at WIS 16 & WIS 157
- Some operational improvements to US 53
- Some added operational pressure on WIS 35



Innovative Solutions for the 21st Century



Strategy Package

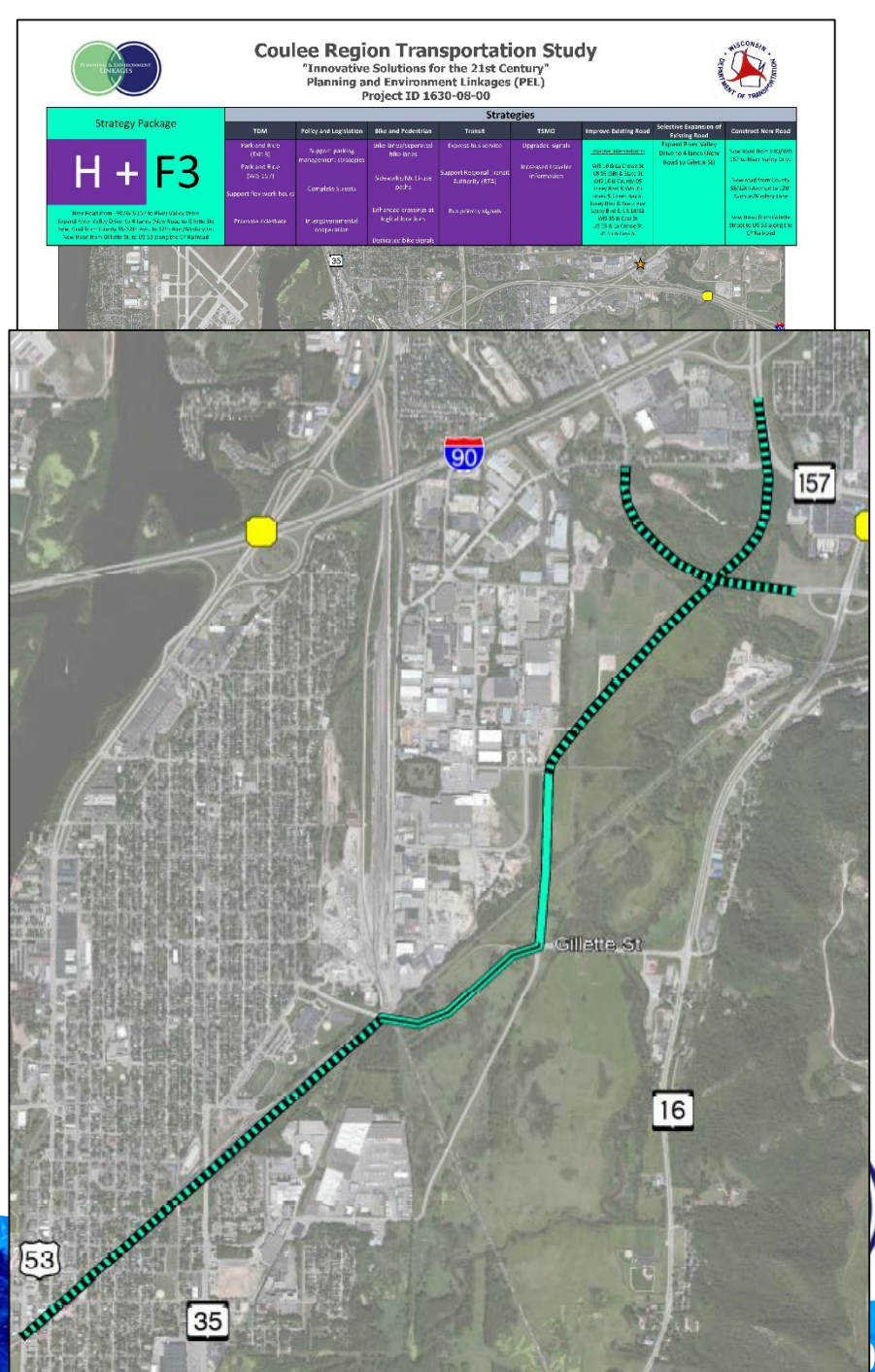
H + F3

Central Corridor

- Extend US 53 south, use Gillette Street to connect to WIS 35 and US 53 along railroad corridor
- 4-lane roadway
- Significant operational improvements to WIS 16
- Removes bottleneck at WIS 16 & WIS 157
- Some operational Improvements to 35 & 53



Innovative Solutions for the 21st Century



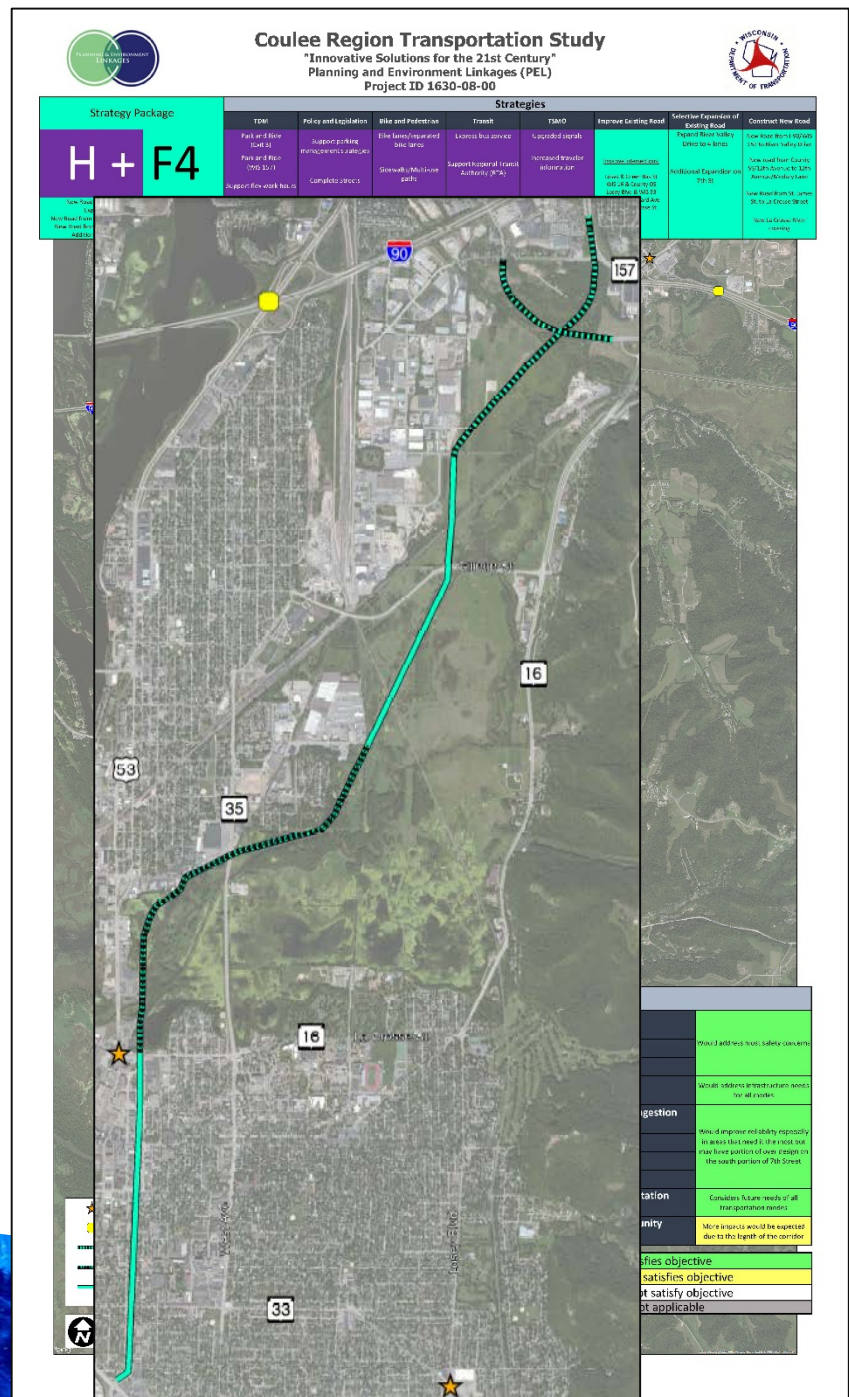
H + F4

Central Corridor

- Extend US 53 south, cross WIS 35, continue south to US 14
- 4-lane roadway
- 25-45 mph roadways
- Significant operational improvements to WIS 16
- Removes bottleneck at WIS 16 & WIS 157
- Significant operational improvements to WIS 35 & US 53
- Additional crossing of La Crosse River



Innovative Solutions for the 21st Century



Strategy Package

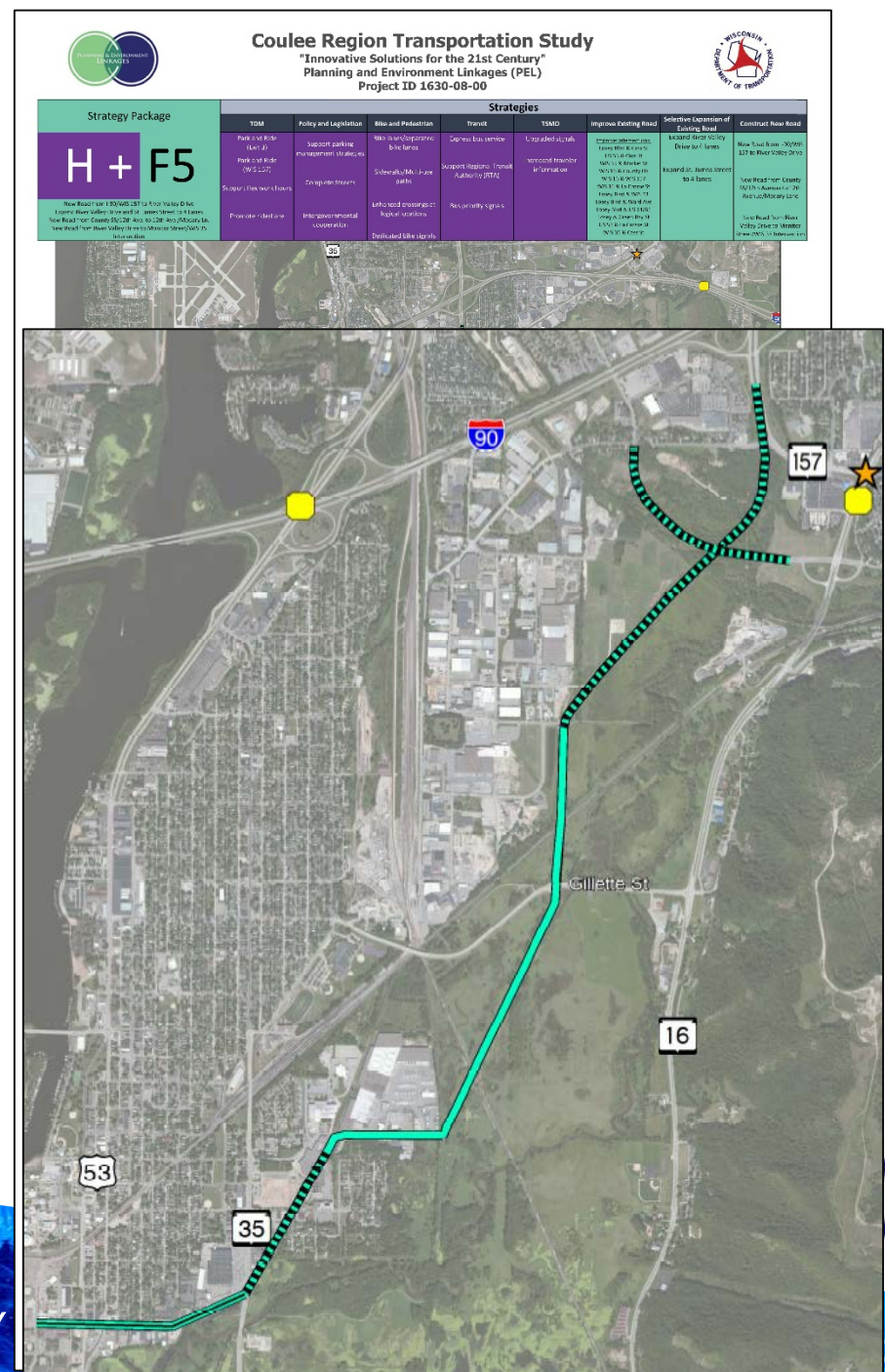
H + F5

Central Corridor

- Extend US 53 south, connect to WIS 35 at Monitor Street
- 4-lane roadway
- 25-45 mph roadways
- Significant operational improvements to WIS 16
- Removes bottleneck at WIS 16 & WIS 157
- Some operational improvements to US 53
- Some operational pressure on WIS 35



Innovative Solutions for the 21st Century

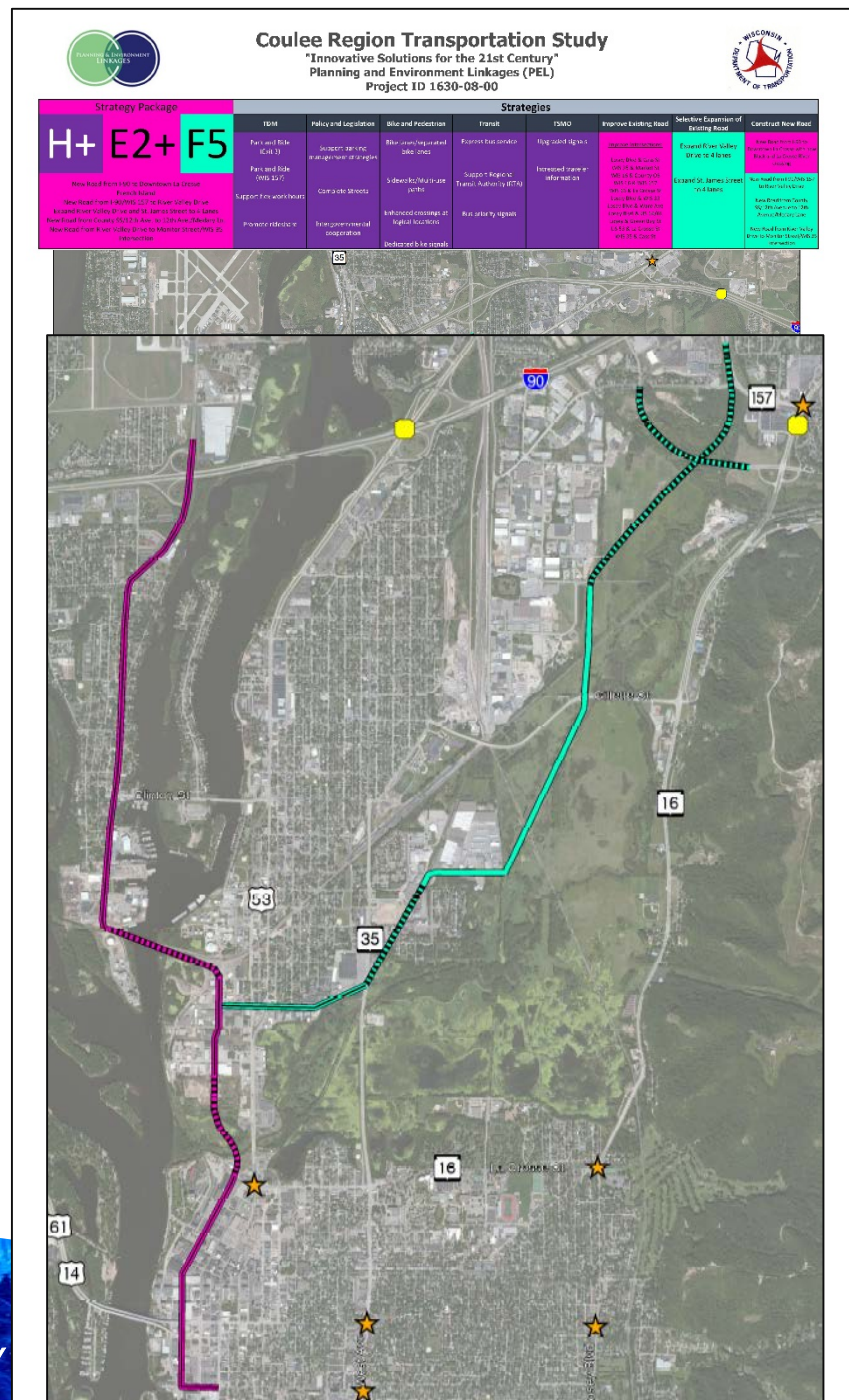


Central + West Corridor

- Significant operational improvements to WIS 16
- Removes bottleneck at WIS 16 & WIS 157
- Significant operational improvements to WIS 35 & US 53
- Improves connection to Downtown
- Adds additional crossing of La Crosse River



Innovative Solutions for the 21st Century



Public Involvement

- ▶ Over 90 meetings with over 1600 total attendance
 - Public Involvement Meetings
 - Local Official Meetings
 - Agency Meetings
 - Business/Business Groups
 - Advisory Groups
 - Neighborhoods
- ▶ Over 700 written comments received



Innovative Solutions for the 21st Century



Next Steps

- ▶ Complete final Report (Spring 2016)
- ▶ Report will be available for review
- ▶ The Coulee Region Transportation Study Team recommends the process moves forward
- ▶ Department will determine this summer whether to move forward to the environmental phase



Town Hall Meeting



► Format

- Rotate through subject areas/written comments
- Limit time to 30 minutes
- Open Q & A 10 minutes



Innovative Solutions for the 21st Century



Questions

