

Project 1071-01-02/82

I-90

**Theater Road to County C
La Crosse County**

Virtual Public Involvement Meeting

August 2024

Dominic Cypher, P.E.

WisDOT-SWR La Crosse



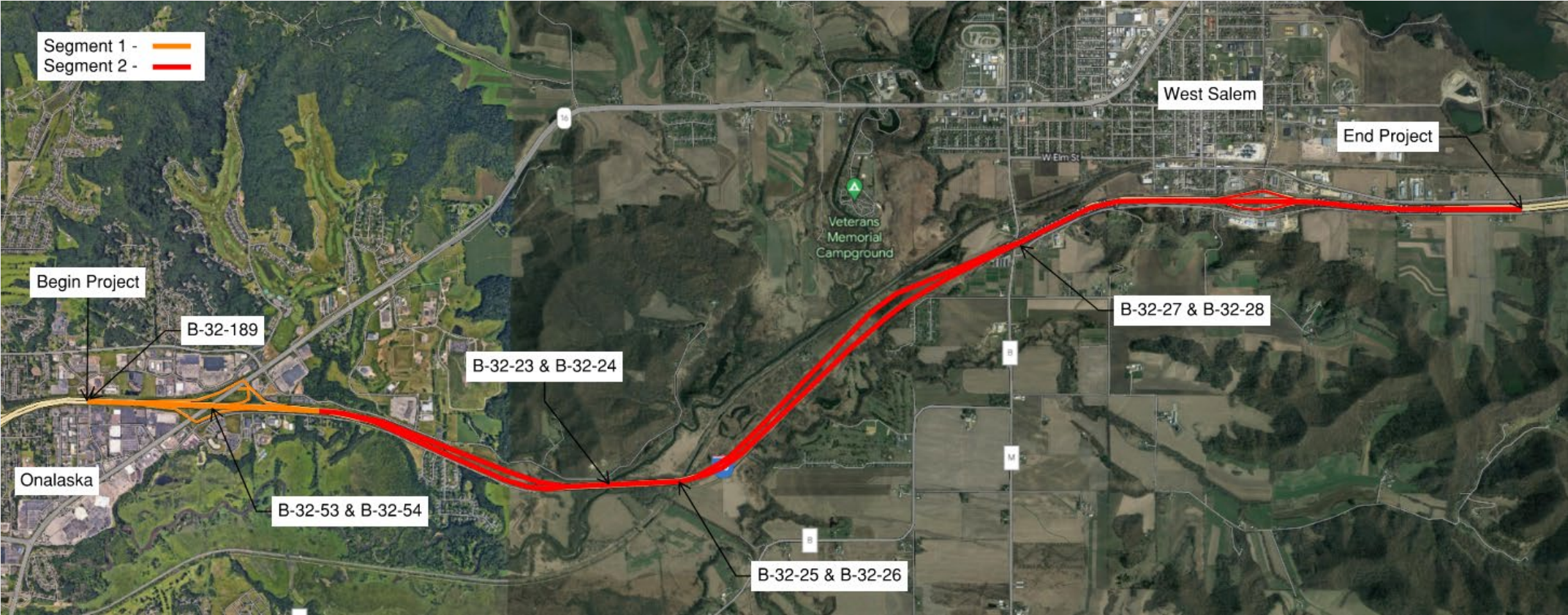
Presentation Agenda

- Project Limits
- Recap Project Purpose and Need
- Chosen Proposed Improvements
- Summary of Changes
- Business Coordination
- Upcoming Schedule
- Contact Information



Project Limits

Overview



Project Limits

Pavement Segments

- Segment 1

- Limits

- Begins at Theater Rd and ends just East of the I-90/WIS 16 interchange at the pavement change

- Existing Pavement

- Concrete pavement with asphalt shoulders

- Segment 2

- Limits

- Begins just East of the I-90/WIS 16 interchange at the pavement change and end just East of the I-90/Count C interchange at the pavement change

- Existing Pavement

- Concrete pavement with an asphalt overlay and asphalt shoulders

Recap Purpose and Need

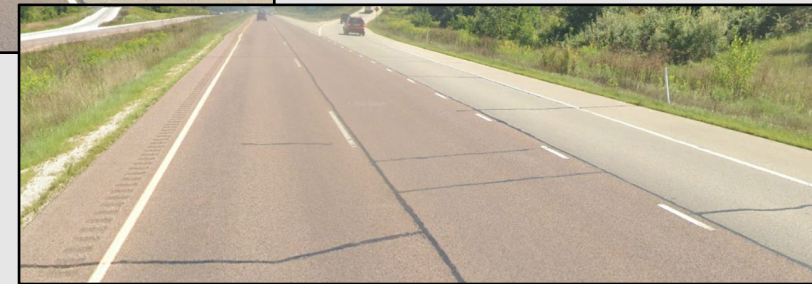
Pavement Deterioration

- Purpose

- Maintain interstate connectivity

- Need

- Pavement deterioration exhibited on I-90
- Segment 1 deficiencies include deteriorated joints (travel lanes) and shoulders are in poor condition
- Segment 2 deficiencies include transverse and longitudinal cracking.



Chosen Proposed Improvements

- Segment 1

- I-90

- Concrete Pavement Repair/Replacement
 - Remove areas of deficient concrete pavement and replace with new concrete.
 - Mill and Overlay Asphalt Shoulders and Gores
 - Mill 3.5-inches and overlay 3.5-inches of new asphalt
 - Replace Guardrail
 - Update Class A Beam Guard to Midwest Guardrail System (MGS) Guardrail
 - Install Drop Inlet Drainage System at Structures
 - Replace Right-of-Way Fence
 - Culvert Maintenance
 - Structure Repairs
 - I-90 Bridges Over WIS 16



Chosen Proposed Improvements Cont.

- Segment 1

- I-90/WIS 16 Interchange Ramps

- Concrete Pavement Repair/Replacement

- Remove areas of deficient concrete pavement and replace with new concrete.

- Mill and Overlay Asphalt Shoulders

- Mill 3.5-inches and overlay 3.5-inches of new asphalt in spot locations

- Replace Concrete Curb and Gutter



Chosen Proposed Improvements Cont.

- Segment 2

- I-90

- Mill and Overlay Asphalt Travel Lanes, Shoulders, and Gores
 - Mill 3.5-inches and overlay 3.5-inches of new asphalt
 - Replace Guardrail
 - Update Class A Beam Guard to Midwest Guardrail System (MGS) Guardrail
 - Install Drop Inlet Drainage System at Structures
 - Culvert Maintenance
 - Crossovers
 - Structure Repairs
 - I-90 Bridges Over the La Crosse River, I-90 Bridges Over the La Crosse State Trail, and I-90 Bridges Over County M



Chosen Proposed Improvements Cont.

- Segment 2

- I-90/County C Interchange Ramps and Terminal Intersections

- Mill 2-inches of asphalt pavement, remove areas of deficient underlying concrete pavement, replace with new concrete, and overlay 2-inches of new asphalt pavement.

- Mill and Overlay Asphalt Shoulders

- Mill 2-inches and overlay 2-inches of new asphalt



Chosen Structure Specific Improvements

- I-90 Bridges Over the La Crosse River
 - Concrete Deck Replacement
 - Repair/Replace Bearings
 - Apply a Thin Polymer Overlay
- I-90 Bridges Over the La Crosse State Trail
 - Spot Painting



Chosen Structure Specific Improvements Cont.

- I-90 Bridge Over County M (Eastbound)
 - Concrete Deck Replacement
 - Apply Thin Polymer Overlay
 - Bridge Painting
- I-90 Bridge Over County M (Westbound)
 - Concrete Deck Replacement
 - Apply Thin Polymer Overlay
 - Replace/Repair Bearings
 - Bridge Painting



Chosen Structure Specific Improvements Cont.

- I-90 Bridges Over WIS 16
 - Replace Bearings



Summary of Changes

Summary

- I-90 Bridge Over Theater Road
 - Removed from proposed work
- I-90 Bridge Over County M (Eastbound)
 - Added the application of a “Thin Polymer Overlay” to proposed structure work
- I-90 Bridge Over County M (Westbound)
 - Added the application of a “Thin Polymer Overlay” to proposed structure work



Business Coordination

- Visit “wisconsindot.gov/together”
 - Tips, Tools, and Resources
- Project Team is Here to Help
 - What Information Would Help You...
 - Inform Customers About the Project?
 - Coordinate with Suppliers?
 - Communicate with Employees?



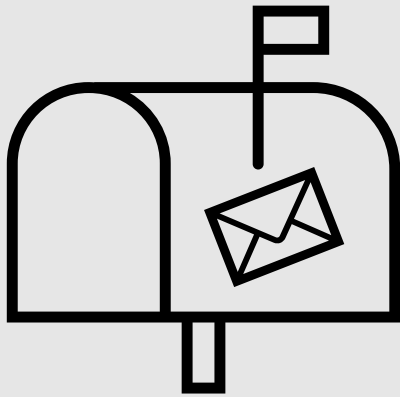
Project Schedule

- Environmental Report– April 2024
- Preliminary Design Complete – February 2025
- PS&E – August 2026
- Contract Let – November 2026
- Construction Start – Spring 2027
- Construction Completion – Fall 2027



Thank You

If you have any comments, questions, or concerns please do not hesitate to call, send an email, or mail a letter.



Project Contact Information

Brian Meyer, PE

WisDOT Project Manager

(608) 789-5676

Brian.Meyer@dot.wi.gov

Dominic Cypher, PE

WisDOT Project Engineer

(608) 785-9044

Dominic.Cypher@dot.wi.gov

Mailing Address:

WisDOT Southwest Region – La Crosse
3550 Mormon Coulee Road
La Crosse, WI 54601

