



US 12
Baraboo – Sauk City
Polymer Overlay Project

Project Members

Marc Schweiger

WisDOT Project Supervisor

Greg Brecka

WisDOT Project Manager

Erik Nilson

WisDOT Project Lead Engineer

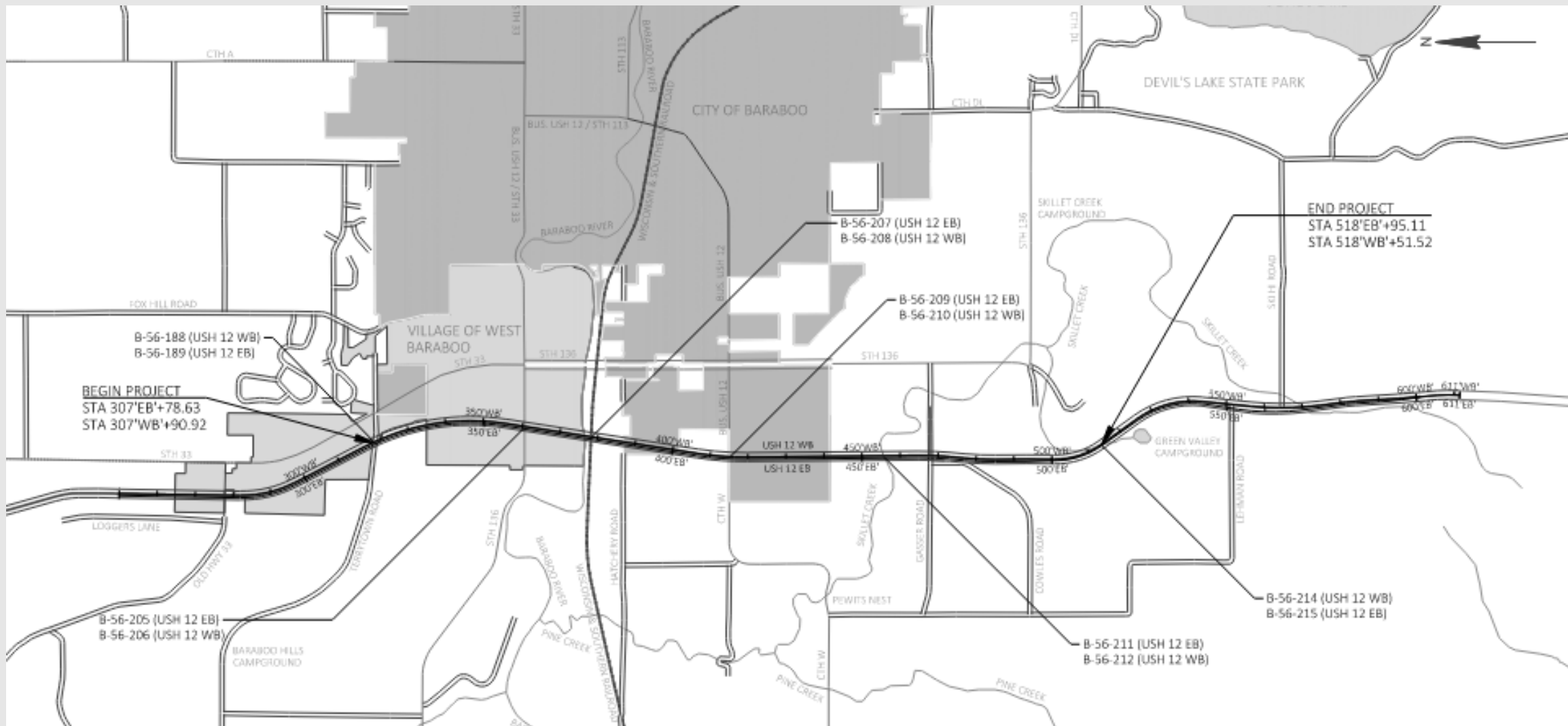


Presentation Agenda

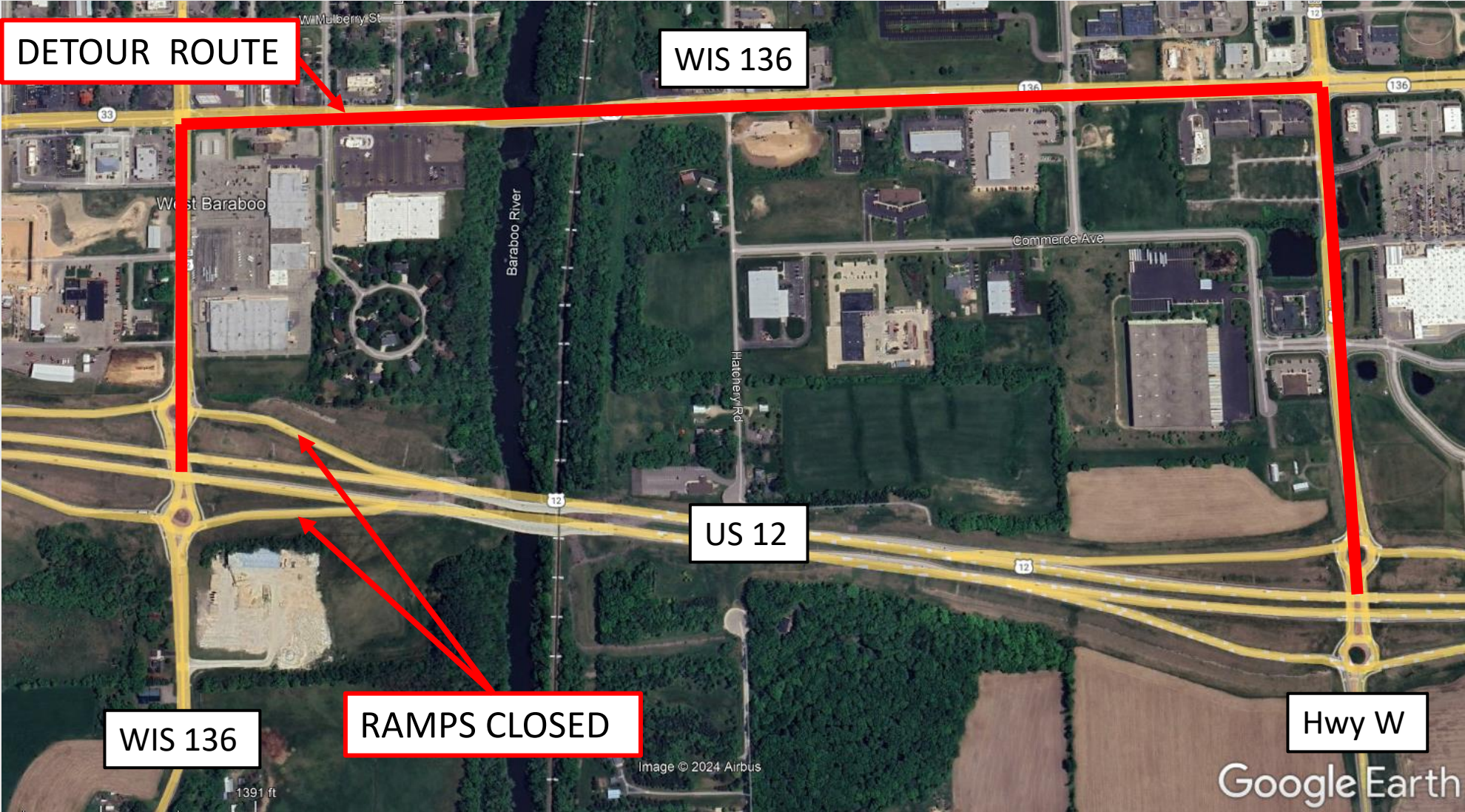
- Project Limits
- Detour Information
- Design Overview
- Recent Activities
- Upcoming Schedule
- Contact Information



Project Limits



Detour



Design Overview

- Project to place a polymer overlay on 12 bridges on US 12
 - This will address surface cracks that are forming on the driving surface of the bridges.
- Work will be done with lane closures
- Limited ramp closures will be needed due to bridges being close the ramps.
 - The ramps will be closed once each for 2-3 days.
 - The detours will be signed.



Recent Activity

- Sent initial coordination/notification letters
- Preliminary Plans
- Draft Environmental Report



What is Next?

- Environmental Report
- Final Plans
- Construction Start

Spring 2024

Winter 2026

Summer 2028



Contact Information

Marc Schweiger

Marc.Schweiger@dot.wi.gov

(608) 245-2633

Greg Brecka

Gregory.Brecka@dot.wi.gov

(608) 516-6524

Erik Nilson

Erik.Nilson@dot.wi.gov

(608) 516-6571

