

US 12 (Wisconsin Dells Parkway) WIS 13 to E. Adams Street

WisDOT Southwest Region

Public Hearing

Village of Lake Delton and City of Wisconsin Dells, Sauk County, WI

August 24, 2022



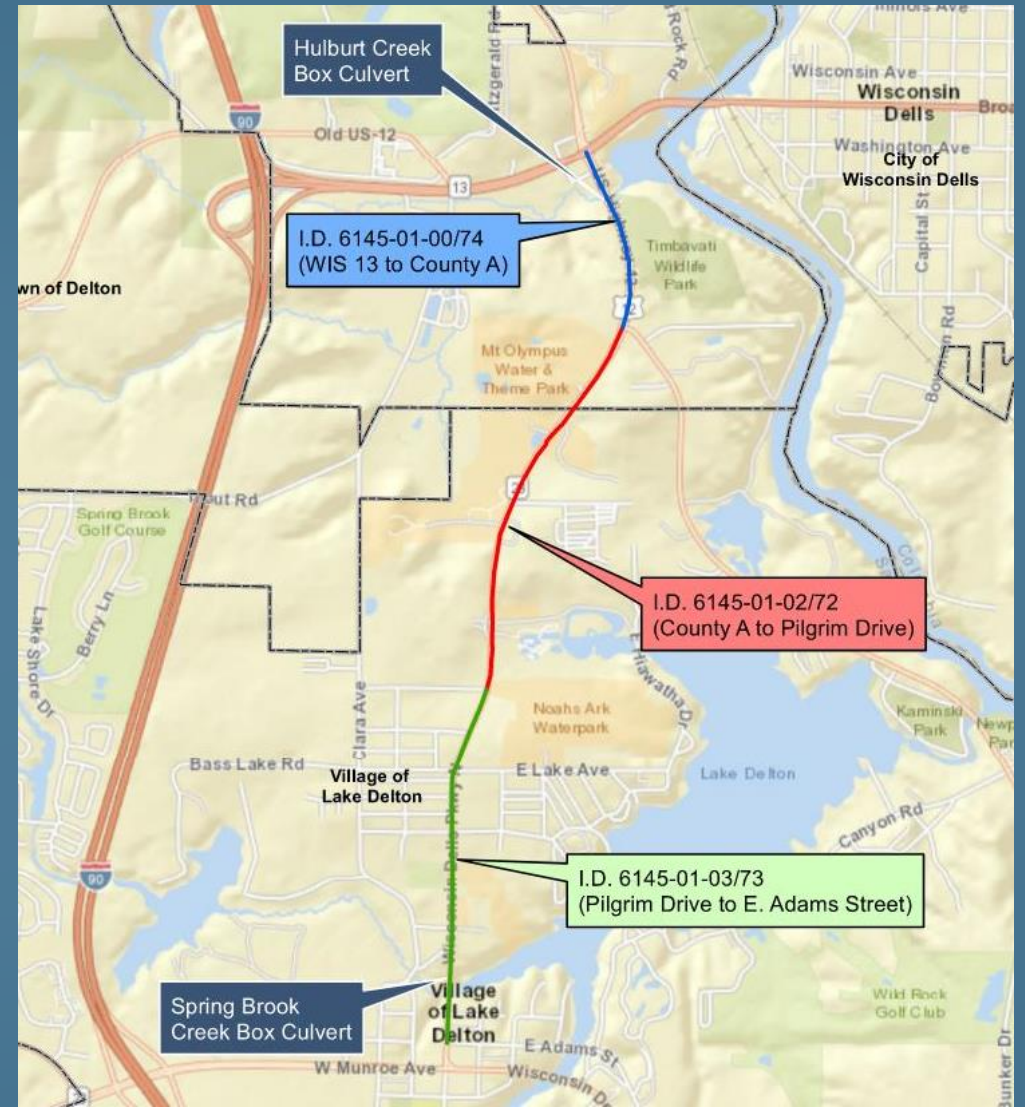
Meeting agenda

- Project location and limits
- Purpose and need
- Alternatives considered
- Environmental analysis
- Preferred alternative
- Next steps



Project limits and definition

- Project I.D. 6145-01-00/74
 - WIS 13 to County A
 - Built in conjunction with project 6145-01-72
- Project I.D. 6145-01-02/72
 - County A to Pilgrim Drive
 - Highway Safety Improvement Program
- Project I.D. 6145-01-03/73
 - Pilgrim Drive to E. Adams Street
 - Highway Safety Improvement Program



Traffic volumes

- 2021 daily traffic volumes along US 12
 - 7,000 to 21,000 vehicles per day during the winter/tourist off-peak season (November through February)
 - 20,000 to 37,000 vehicles per day during the summer peak tourist season (June through mid-August)



Purpose and Need

- The purpose of the proposed improvements in the US 12 (Wisconsin Dells Parkway) corridor is to address the following:
 - Deteriorating pavement condition
 - Safety and operations
 - Modal interrelationships for pedestrians and bicyclists
- The need for transportation improvements in the US 12 corridor is demonstrated through a combination of factors that include pavement condition, safety and operational concerns, and pedestrian and bicycle travel needs.

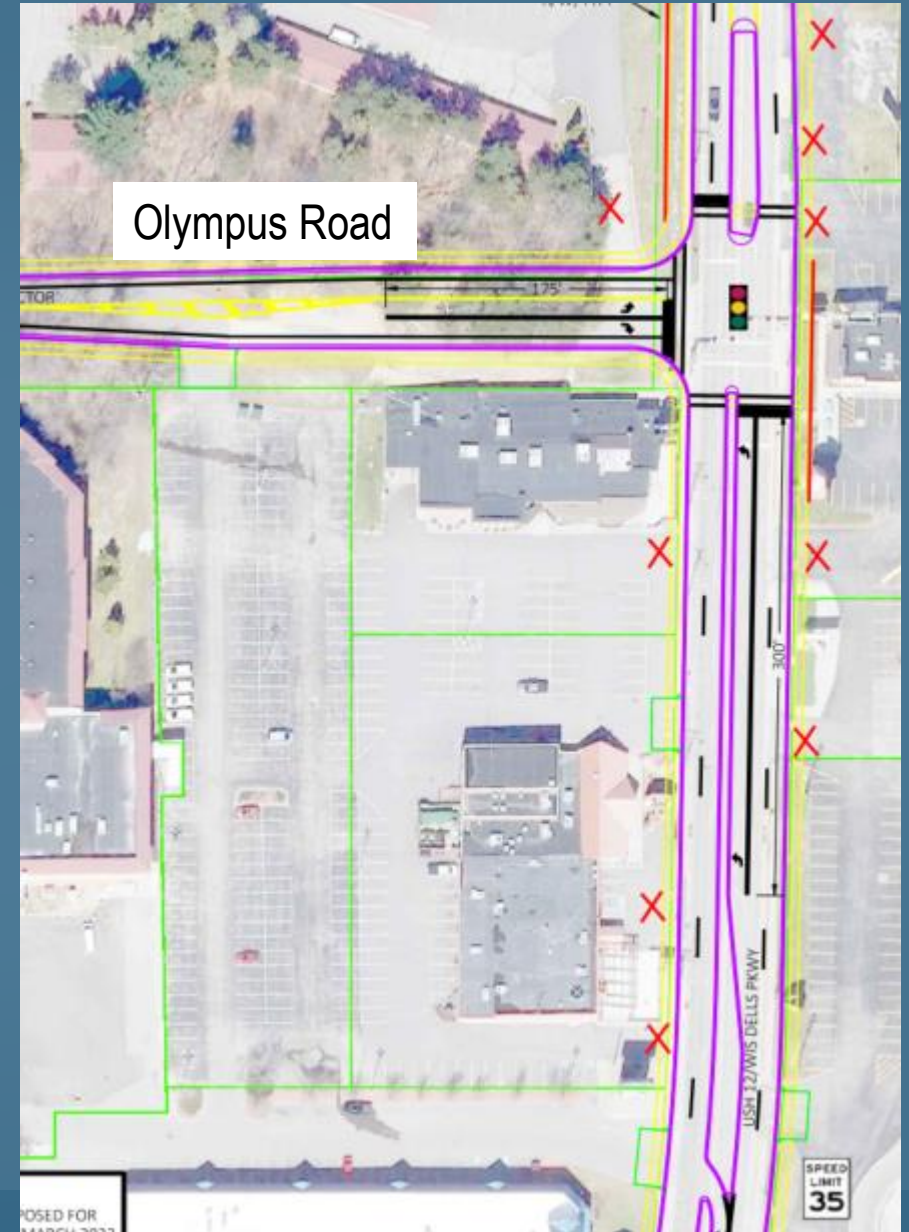


Alternatives considered

North portion WIS 13 to County A	Center & south portions County A to E. Adams Street
<ul style="list-style-type: none">• No build• Pavement replacement• Pavement replacement with urban shoulder (preferred)	<ul style="list-style-type: none">• No build• Pavement replacement as a narrow 5-Lane Facility with monolithic sidewalk• Pavement replacement as a wider 5-Lane facility with terrace and sidewalk (preferred)
<ul style="list-style-type: none">• The project is also considering access management as part of the alternatives	

Olympus Road planning

- Village of Lake Delton proposing new public road between US 12 and Clara Avenue
- Traffic Impact Analysis prepared by the village and reviewed by WisDOT
- Construction coordinated with US 12 improvements and built as a separate project led by the Village of Lake Delton



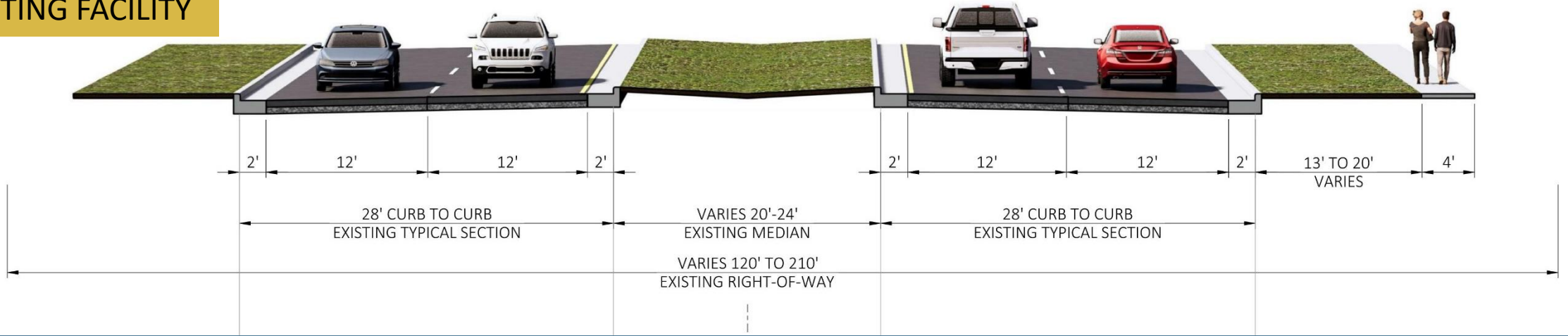
US 12 preferred alternative

- Replacement of the roadway pavement from WIS 13 to County A
 - New roadway pavement with urban shoulder, and curb & gutter
 - Median section to remain
 - Minimal real estate acquisition anticipated
- Reconstruction of the roadway as a 5-lane facility with a Two-Way-Left-Turn-Lane (TWLTL) from County A to E. Adams Street
 - Preferred alternative will require real estate acquisition as shown on exhibits
 - Utilities are planning to relocate underground
 - New lighting will be included along the corridor

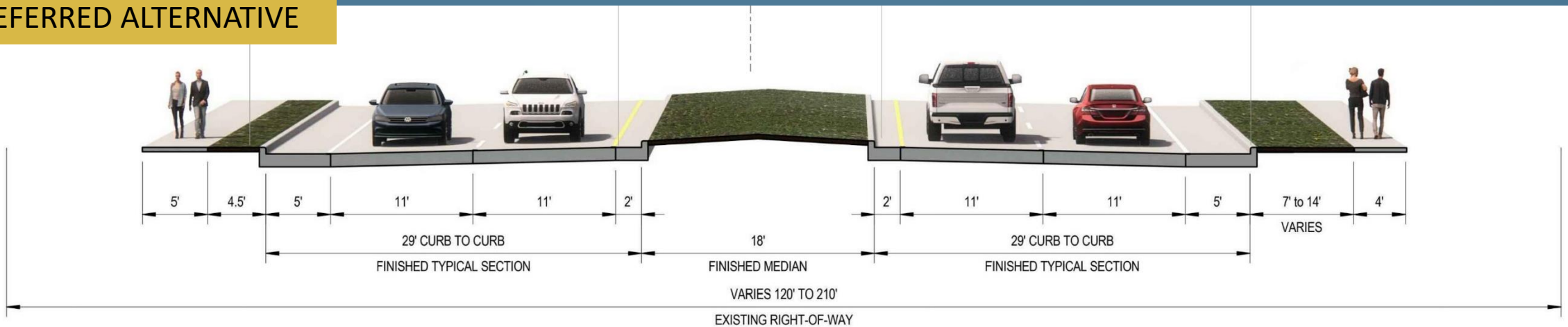


Preferred alternative: WIS 13 to County A (North)

EXISTING FACILITY

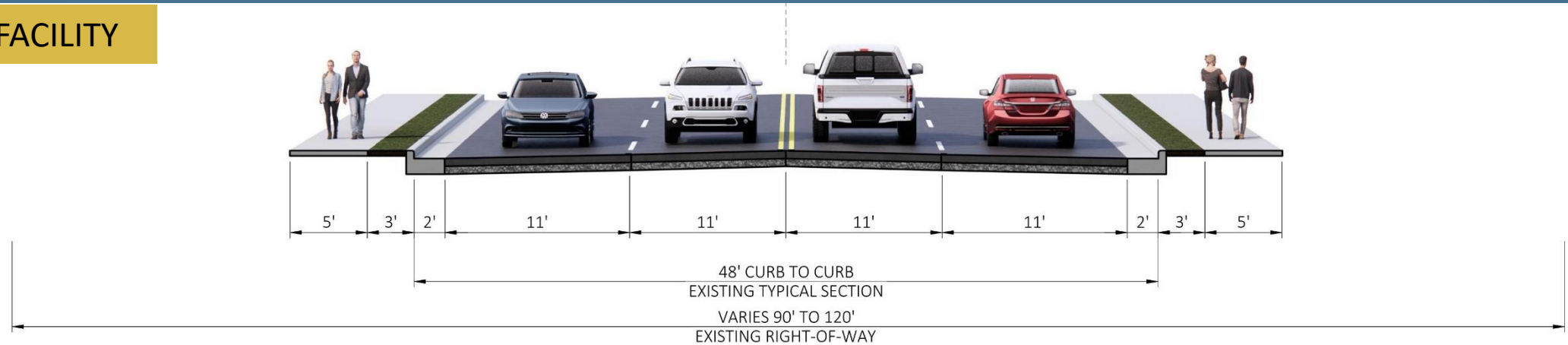


PREFERRED ALTERNATIVE

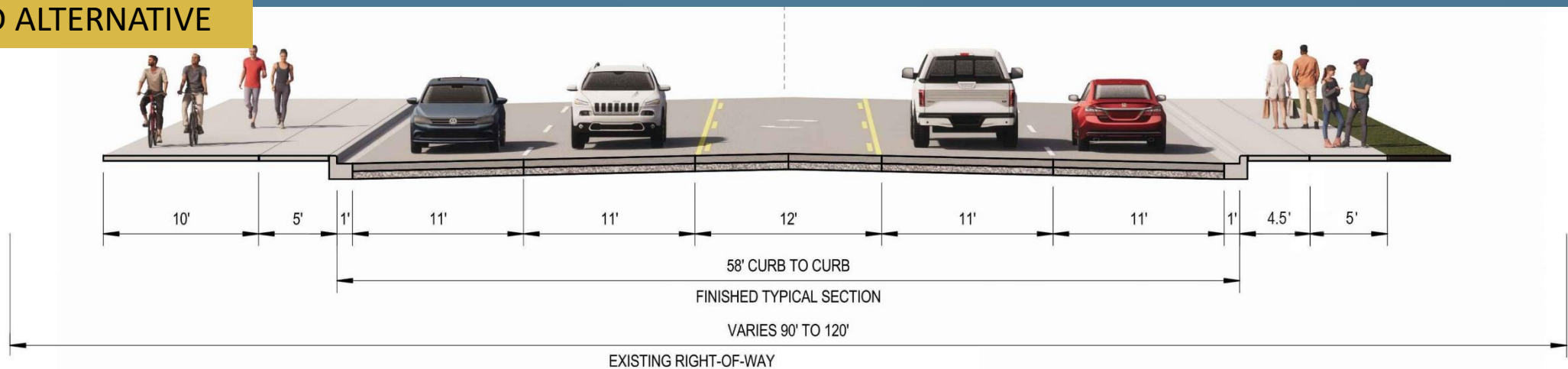


Preferred alternative: County A to Olympus Road (Center)

EXISTING FACILITY

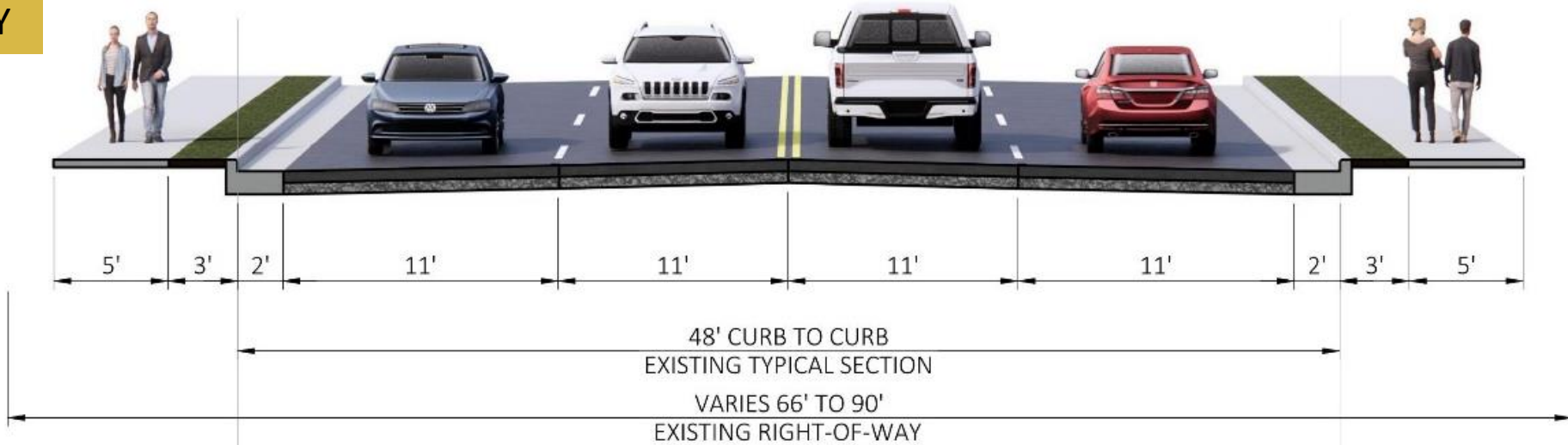


PREFERRED ALTERNATIVE

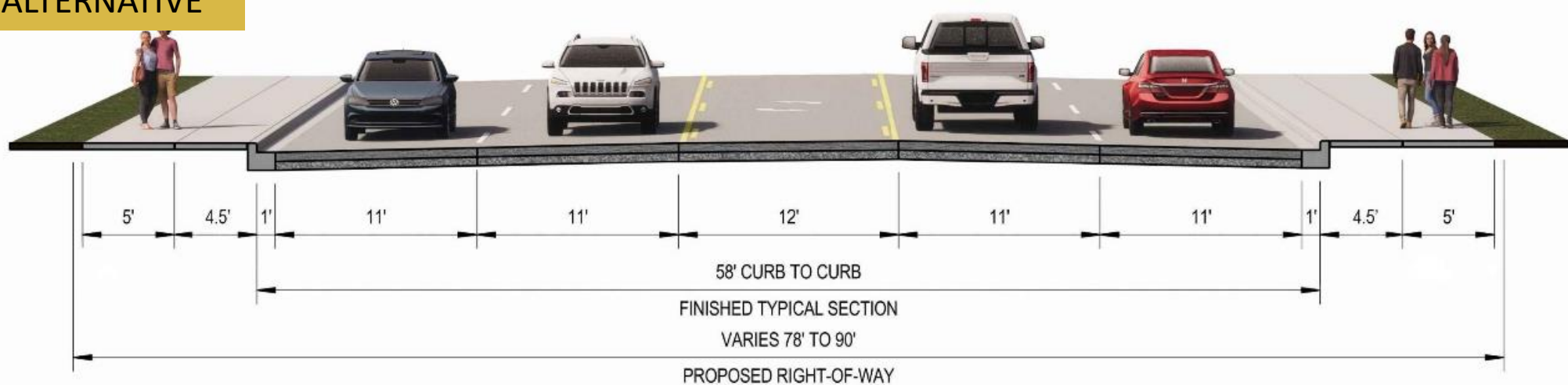


Preferred alternative: Olympus Road to E. Adams Street (South)

EXISTING FACILITY



PREFERRED ALTERNATIVE



Preferred alternative: Safety and Operations

- Bicycle and pedestrian improvements
 - New sidewalk will be added to the west side of US 12 from WIS 13 to County A.
 - Urban shoulders constructed from WIS 13 to County A.
 - Shared use path will be constructed between County A to Olympus Road on the west side of the roadway.
- Signal improvements at County A, Lake Avenue and Olympus Road
 - Monotubes and flashing yellow arrows and left-turn lane modifications.
- Pedestrian crossings
 - Raised pedestrian islands to be added mid-crossing
 - High-Intensity Activated crossWalk beacon (HAWK's) will remain along the corridor at the current locations



Preferred alternative: Safety and Operations

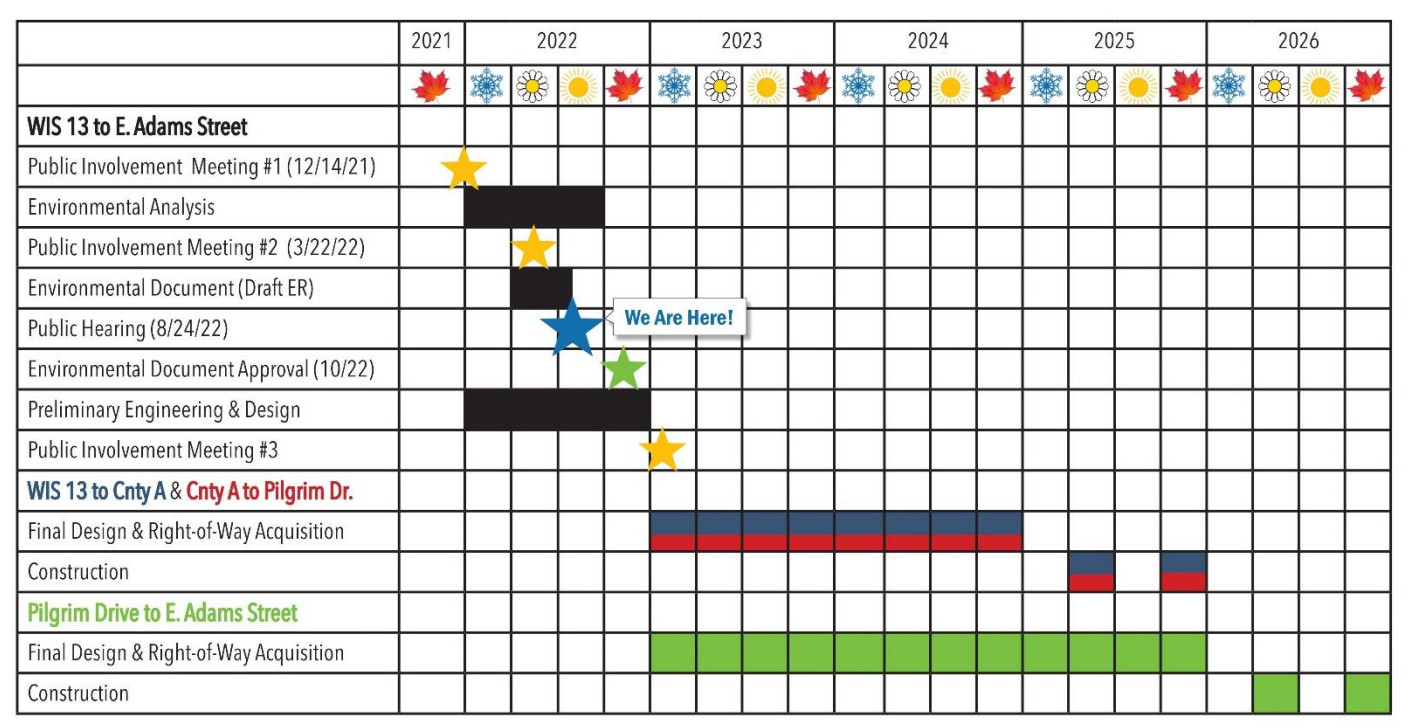
- Access management strategies have resulted in a reduction in the number of driveways along the corridor
 - Removing these driveways reduces the number of access points and provides greater separation between the remaining driveways, improving operations and safety for traffic along US 12 and the remaining driveways.
 - Eliminating driveways creates a safer environment for pedestrians, bicycles and vehicles as the number of driveway crossings is reduced.
- Preferred alternative includes the following reduction in driveways:
 - North portion: Elimination of 1 of 8 driveways
 - Center portion: Elimination of 24 of 46 driveways
 - South portion: Elimination of 28 of 57 driveways



Key milestones and next steps

Public hearing	August 24, 2022
Public comment period ends	Tuesday, Sept 25, 2022
Environmental Report approval	October 2022
Real estate acquisition	Late 2022 – 2024
Final engineering	Late 2022 – 2025
Utility work	2024 and 2025
Construction	2025 and 2026

- I.D. 6145-01-00/74
- I.D. 6145-01-02/72
- I.D. 6145-01-03/73



Project contact information

Derek Potter, P.E.

WisDOT Southwest Region Project Manager

Derek.Potter@dot.wi.gov

(608) 246-3861

Mary Beth Pettit, P.E.

Consultant Project Manager

marybeth.pettit@graef-usa.com

(414) 467-8912

wisconsindot.gov/Pages/projects/by-region/sw/us12-dellspkwy/default.aspx

