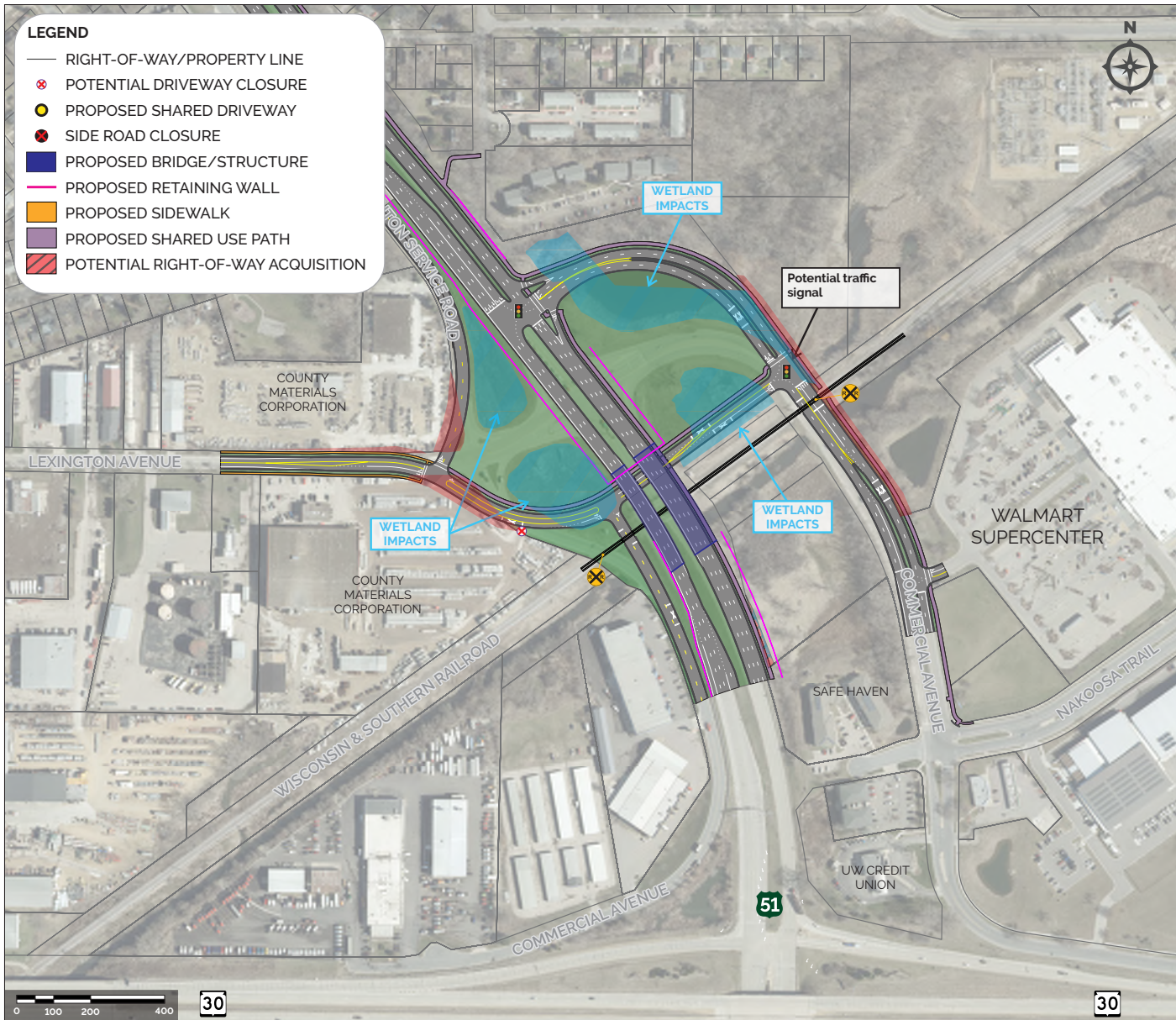


2 US 51 and Commercial Ave: Three-Legged Intersection



Alternative Overview:

- Provides bridges over the existing railroad and new roadway connection underneath US 51
- Realigns US 51 / Commercial Avenue intersection as a three-legged signalized intersection

Geometry:

- Provides grade-separating bridges over railroad
- Provides non-traditional left turning movements
- Requires bridge/retaining wall structures
- Provides auxiliary lane between WIS 30 and Commercial Avenue, increasing capacity

Safety:

- High safety for bike/peds crossing underneath US 51
- Main intersection eliminates vehicle/rail conflicts
- Adds shared-use path to the roadway network

Traffic:

- Improves traffic operations
- Ability to accept additional capacity to accommodate fluctuations in future traffic volumes

Potential Impacts:

- Right-of-Way | 4.6 acres
- Wetlands | 6.3 acres
- Driveway Access | 1 potential driveway relocation
- Utilities | High impacts, Requires high-voltage utility relocations
- Construction Costs | \$\$\$\$\$

Public and Stakeholder Feedback:

- Public | High Support
- Stakeholders | High Support

place sticky note here

Grade separated intersection, bridges required for this alternative. Railroad south of intersection is being investigated for potential high-speed rail. The design presented in this exhibit is preliminary and specific details may be refined in final design.

