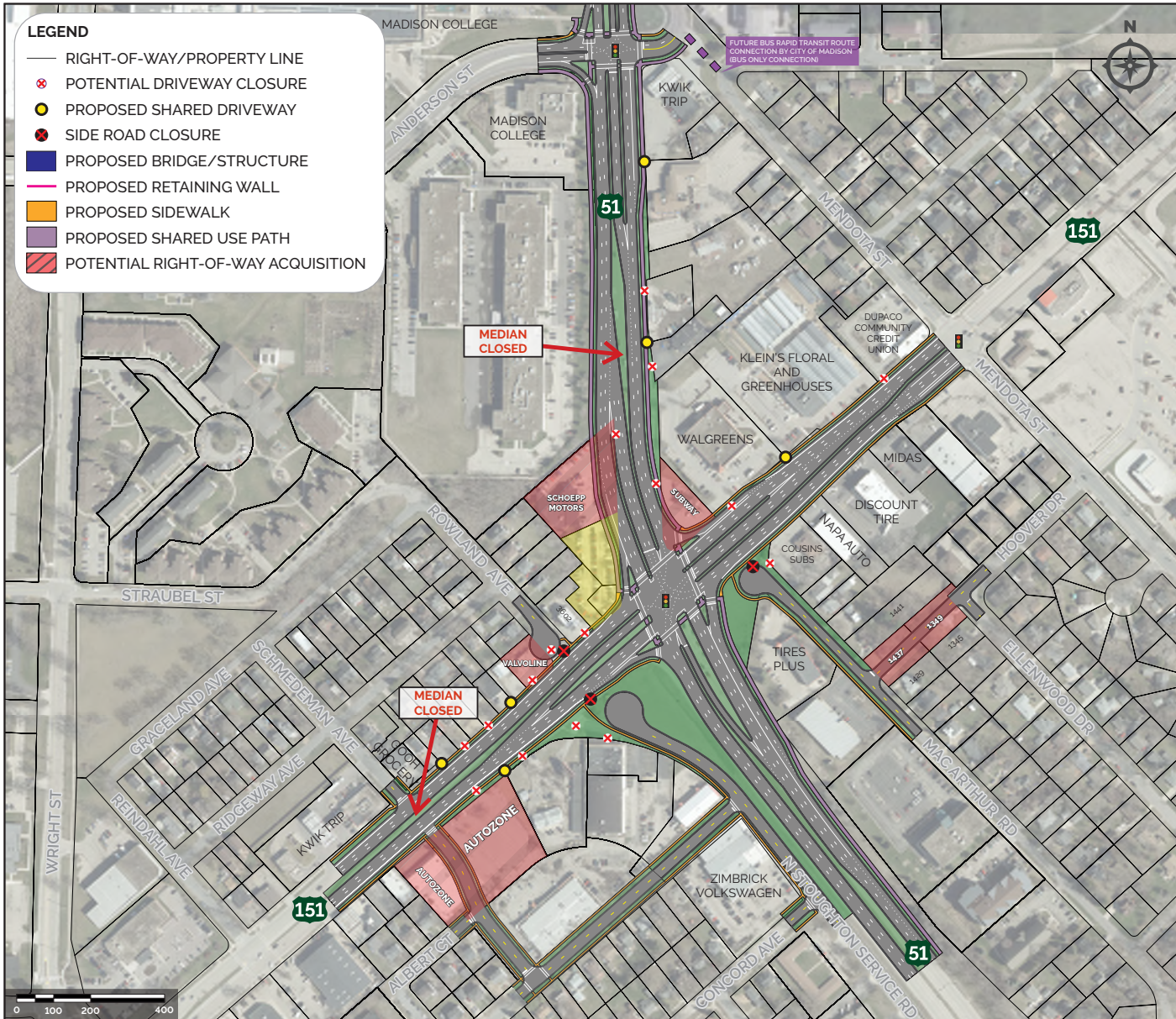


# 3 US 51 and US 151 (East Washington Ave): Existing Conditions Improved



**Alternative Overview:**

- Existing signalized intersection with improvements

**Geometry:**

- Expands upon the existing intersection footprint providing 1 additional northbound lane, 1 additional southbound left turn lane and 1 additional westbound left turn lane
- Improves intersection skew angle
- Maintains existing 'urban' intersection configuration

**Safety:**

- Does not reduce traffic conflicts
- Larger intersection footprint reduces bike/ped safety at the intersection
- Provides crosswalks across all legs of the intersection

**Traffic:**

- Improves traffic operations
- Does not provide significant additional capacity to accommodate fluctuations in future traffic volumes

**Potential Impacts:**

- Right-of-Way | 4 acres
- Side Road Access | 3 closures
- Relocations | 4 business and 2 residential estimated
- Driveway Access | 16 potential driveway closures
- Drainage | Minimal impacts
- Utilities | Minimal impacts
- Construction Costs | \$\$\$

**Public and Stakeholder Feedback:**

- Public - Moderate Support
- Stakeholders - High Support

*place sticky note here*

At-grade intersection, no bridges required for this alternative. The design presented in this exhibit is preliminary and specific details may be refined in final design.

