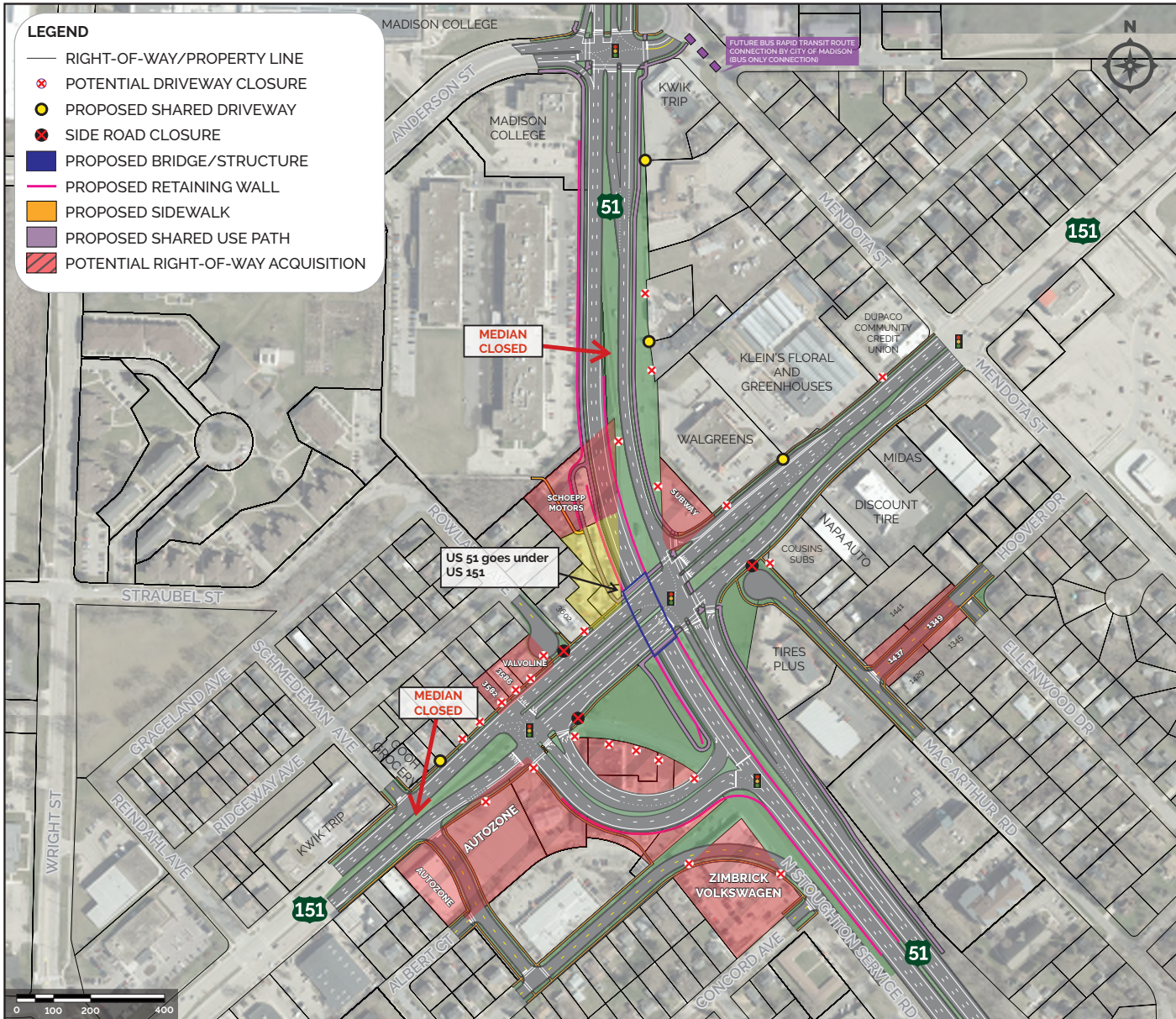


# 3 US 51 and US 151 (East Washington Ave): Jughandle



## RECOMMENDED ALTERNATIVE

### Alternative Overview:

- Provides signalized intersection with partial grade-separation for southbound US 51 traffic
- Redirects key left turn movements to two new signalized intersections

### Geometry:

- Improves intersection skew angle
- Southbound US 51 flows freely underneath US 151
- Requires bridge/retaining wall structures
- Similar to the Jughandle at the intersection of Mineral Point Road and Junction Road on Madison's west side

### Safety:

- Reduces vehicle conflicts at the main intersection
- Improves safety for bike/peds at the main intersection due to shorter crossings

### Traffic:

- Improves traffic operations
- Ability to accept additional capacity to accommodate any fluctuation in future traffic volumes

### Potential Impacts:

- Right-of-Way | 11 acres
- Side Road Access | 3 closures
- Relocations | 11 business and 2 residential estimated
- Driveway Access | 23 potential driveway closures
- Drainage | High impacts
- Utilities | Moderate impacts
- Construction Costs | \$\$\$\$\$

### Public and Stakeholder Feedback:

- Public | Moderate Support
- Stakeholders | Low Support

### Reasons for Recommendation Compared to the Existing Improved Alternative:

- Improved safety with fewer predicted crashes at the main intersection
- Improved overall traffic operations and ability to accept additional future capacity
- Better bike/ped safety with shorter crossings and reduced conflict points at the main intersection

Grade separated intersection, bridges required for southbound US 51 movement in this alternative. The design presented in this exhibit is preliminary and specific details may be refined in final design.

