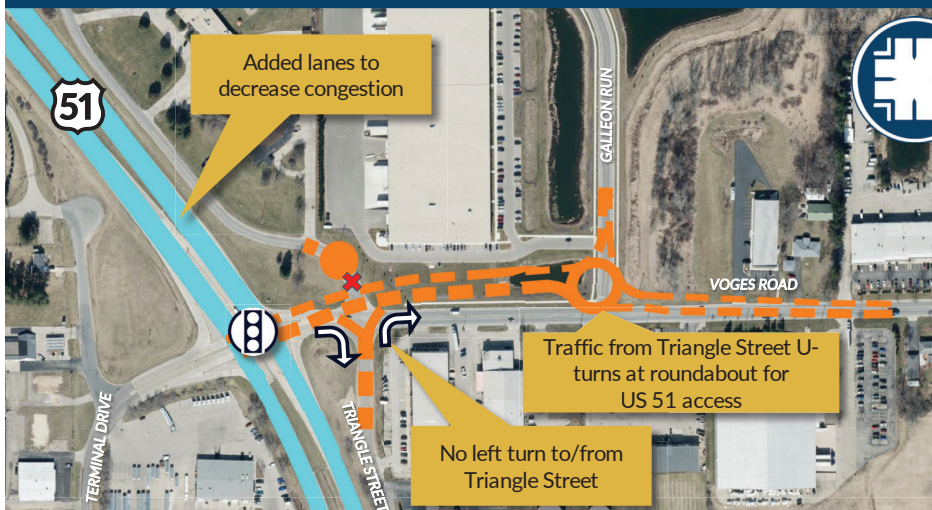


Voges Road/Terminal Drive Concepts

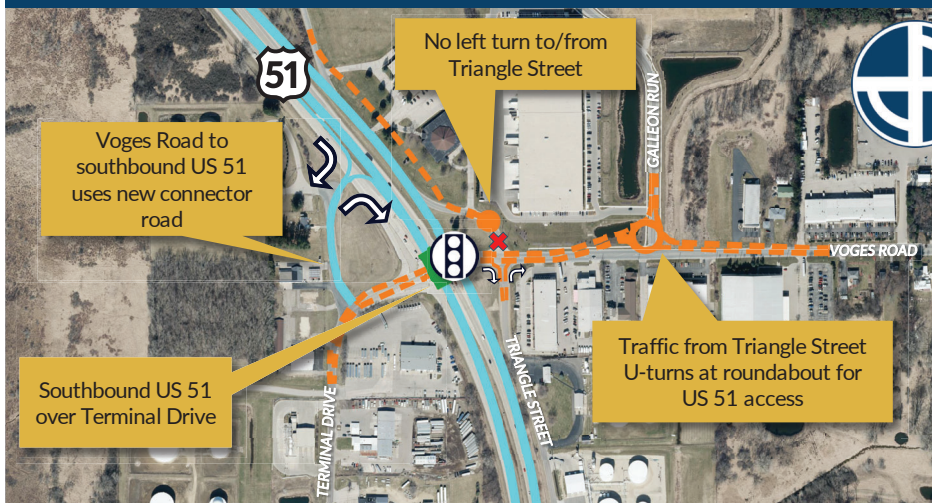
Concepts include expanding the existing intersection or a hybrid intersection



Expanded Intersection

Adds lanes for more capacity and changes frontage road access.

- + Addresses close intersection spacing
- + Additional lanes improve intersection operations
- + Familiar traffic pattern
- + No bridge costs required
- Access changes and impacts to surrounding area
- May require up to 1 property relocations



North Connector Hybrid

Reroutes some turning vehicles onto a northern connector roadway and changes frontage road access.

- + Southbound US 51 traffic doesn't conflict with Voges Road / Terminal Drive
- + Smaller US 51 intersection provides better operation than the Expanded Intersection
- Creates indirection for some users
- Access changes and impacts to surrounding area
- High cost due to bridge and retaining walls
- May require up to 3 property relocations




South Connector Hybrid

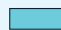
Reroutes some turning vehicles onto a southern connector roadway. Only right turns on to and off US 51.

- + Southbound US 51 traffic doesn't conflict with Voges Road / Terminal Drive
- + Smaller US 51 intersection provides better operation than the Expanded Intersection
- + Maintains access to Triangle Street and Dutch Mill Road
- Creates indirection for some users
- Access changes and impacts to surrounding area
- High cost due to bridge and retaining walls
- May require up to 2 property relocations

LEGEND:

 New Signal


 Improve Existing Signal

 US 51 Improvements

 Local Road Improvements

 Remove Roadway

 Proposed Bridge

 Right Turns Only