



US 51 – Segment 2A Stoughton – Madison Spring Road to Fifth Street



Public Involvement Meeting

May 29th, 2024

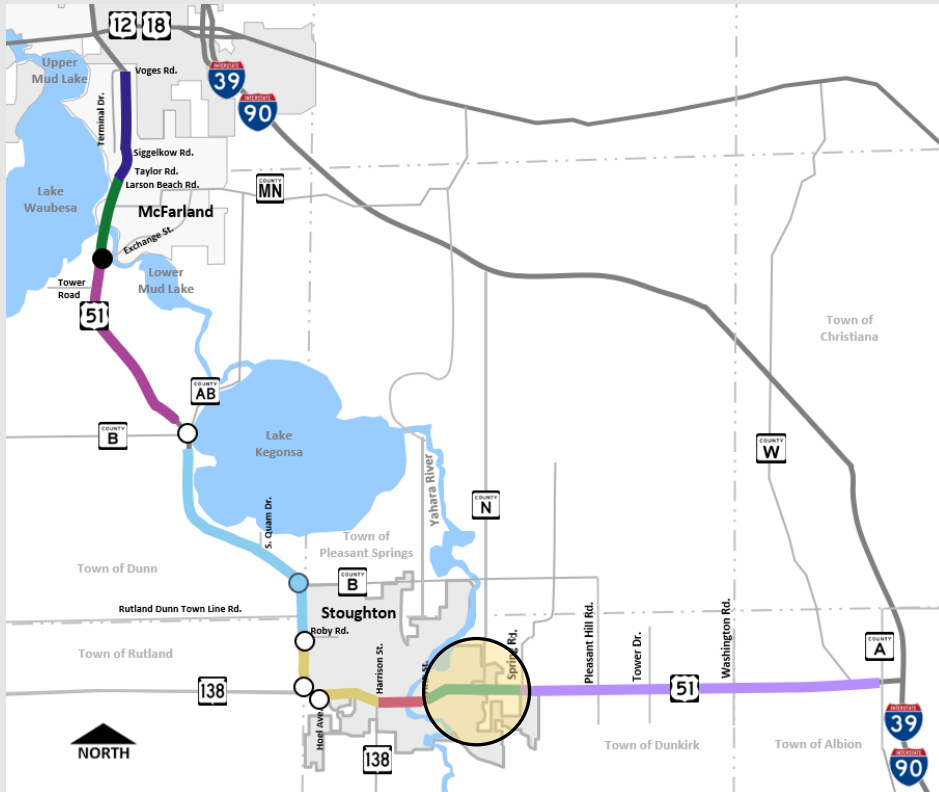
Presentation outline

- Project Overview
- Traffic Control
- Real Estate
- Project Schedule
- Input / Comments



Segment 2A Project Overview

Stoughton – Spring Road to Fifth Street



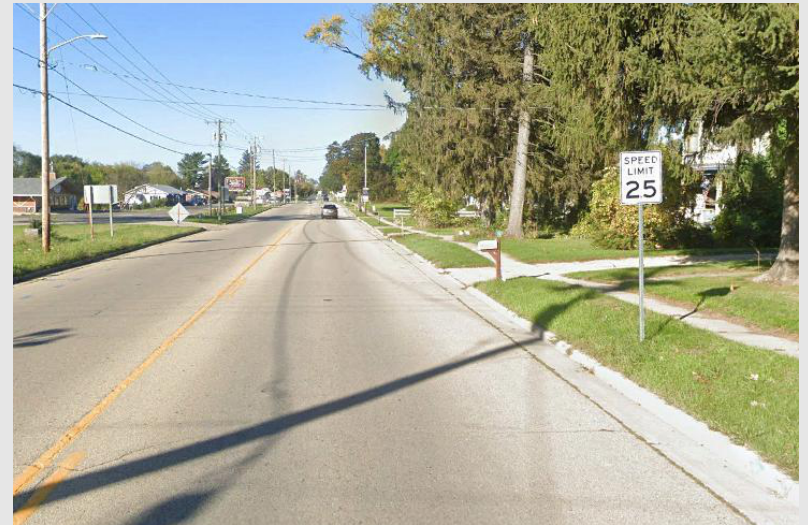
- Project highlights
 - Reconstruct existing 2-lane urban section
 - Improve pedestrian and bicycle accommodations
- Anticipated traffic control
 - Closed to thru traffic (US 51 detour)
- Construction year
 - 2025



Segment 2A Project Overview

Existing Facility Characteristics

- 2-lane urban roadway
 - >10,000 vehicles per day; 5.4% heavy trucks
- Posted speeds
 - 25 mph west of County N
 - 35 mph between County N and Race Track Rd
 - 45 mph between Race Track Rd and Spring Rd
 - 55 mph east of Spring Road
- On-street parking
- Sidewalks and crosswalks

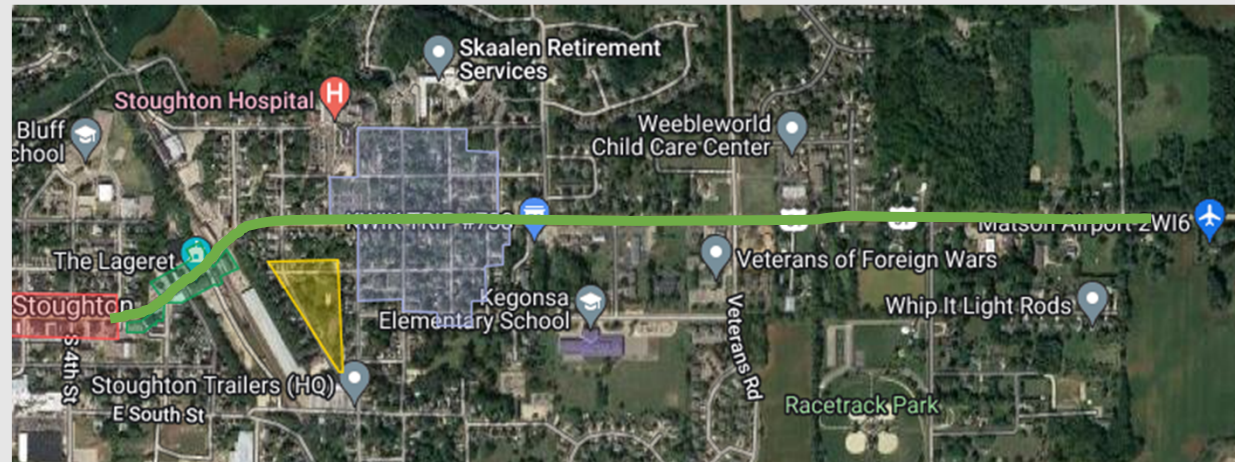


Segment 2A Project Overview

Existing Facility Characteristics

- Environmentally sensitive resources

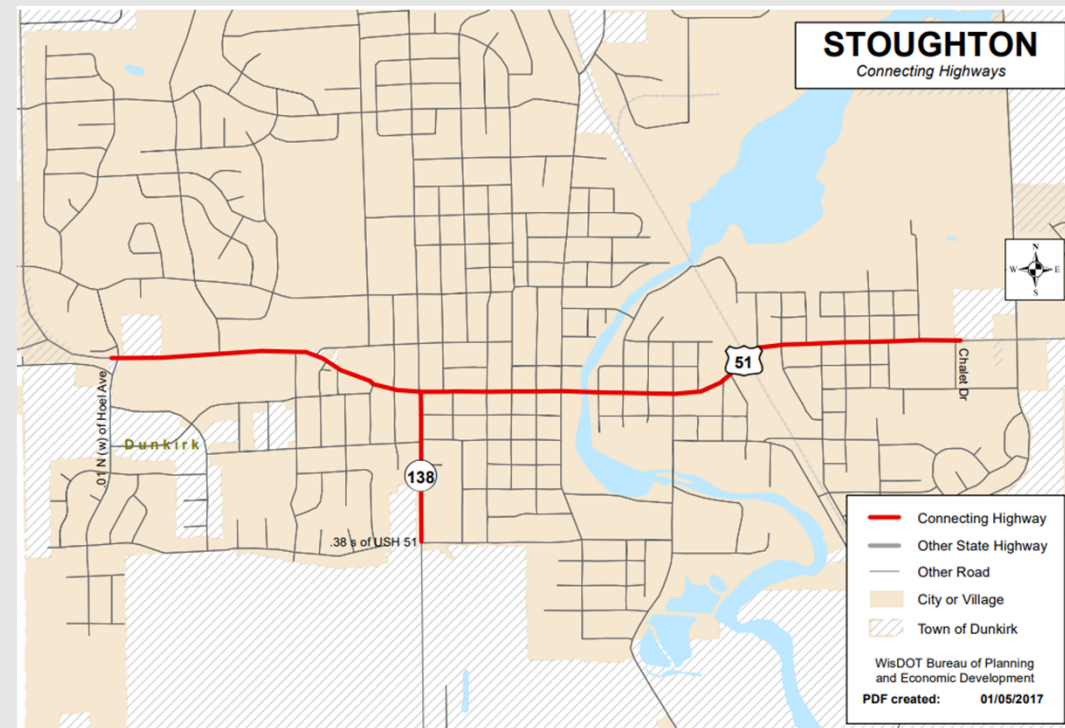
- 3 Historic Districts
 - East Side
 - Depot Hill
 - Main Street
- Archaeological site
- Wetland



Segment 2A Project Overview

Existing Facility Characteristics

- Connecting Highway west of Chalet Drive
 - Locally owned street that carries state highway traffic
 - Maintained by local municipality
 - Access control by local municipality
 - WisDOT works closely with local municipality on final decisions



Segment 2A Project Overview

Project Needs

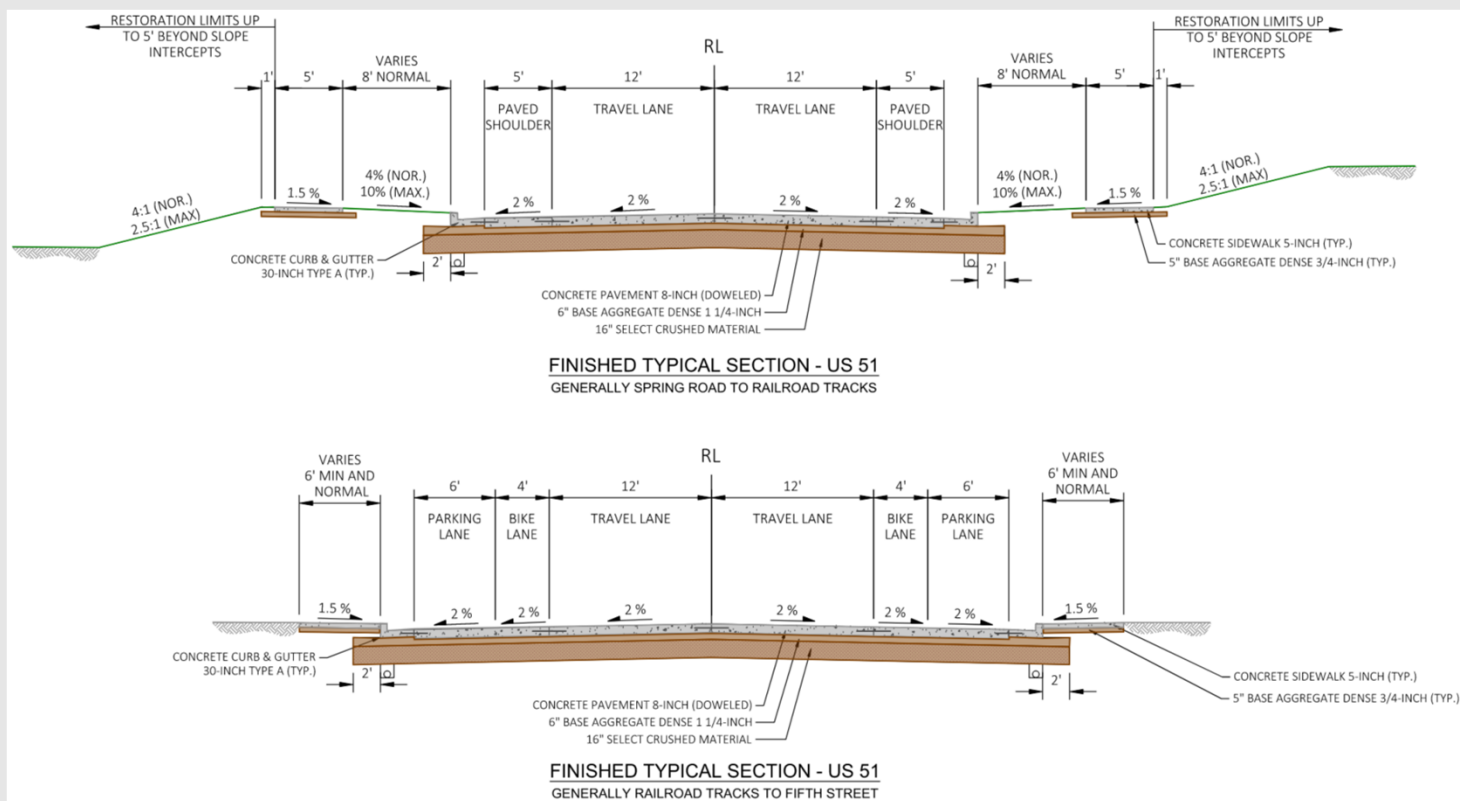
- Address safety and condition concerns
 - Pavement deterioration
 - Roadway geometrics
 - Vertical profile - curve lengths and grades
 - Horizontal curves near 5th Street, the railroad, and Hillside Ave.
 - Roadway cross slope east of 5th Street
 - Hillside Avenue and Spring Road intersections
 - 5th Street retaining wall deteriorating
 - Bicycle and pedestrian improvements



Segment 2A Project Overview

Proposed Improvements

- Reconstruct the roadway with 8" of concrete pavement
- Provide bike lanes and larger terraces



Segment 2A Project Overview

Proposed Improvements

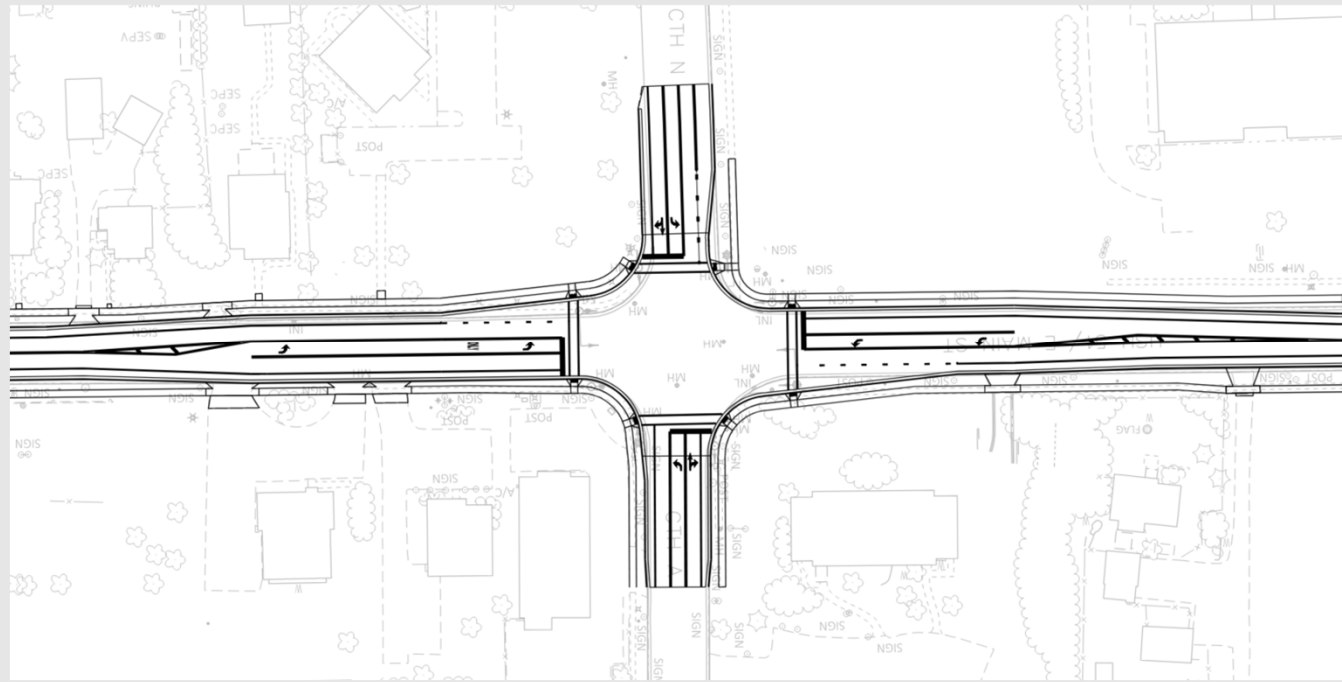
- Enhance bicycle and pedestrian accommodations
 - Consistent on-road bicycle accommodations throughout project limits
 - New or replaced sidewalk
 - South side of US 51: from 5th Street to Race Track Road
 - North side of US 51: from 5th Street to Ashberry Lane
 - Curb ramp reconstruction to meet ADA standards
 - Short medians proposed for 2-stage pedestrian crossings at the following intersections
 - Ashberry Lane, Amundson Parkway, Morris Street, Church Street, Lynn Street
 - Curb ramp bumpouts at 6th Street shorten crossing & enhance visibility in parking area



Segment 2A Project Overview

Proposed Improvements

- Roadway profile and cross slope improvements
 - East of 5th Street
- Intersection improvements
 - Adding WB right turn lane at Spring Road
 - Layout enhancements at County N intersection



Segment 2A Project Overview

Proposed Improvements



- Signal Improvements at County N
 - New signal equipment
 - Updated timing
 - Dedicated left turn phasing
- Lighting
 - New decorative lighting between 5th Street and railroad
 - New standard lighting between railroad and County N



Segment 2A Project Overview

Proposed Improvements

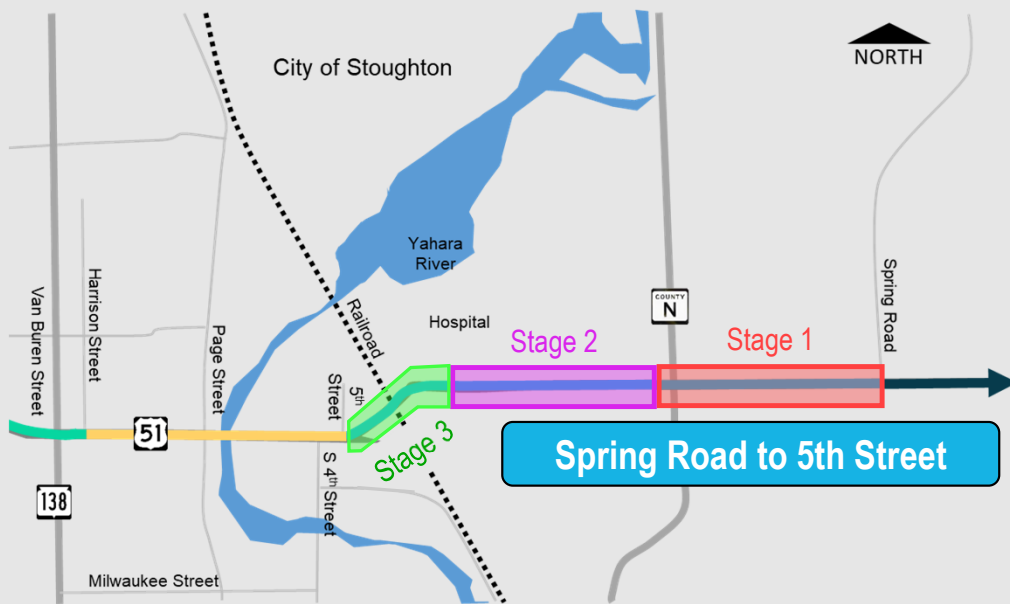


- Reconstruct 5th Street retaining wall
 - Soldier Pile wall is proposed to minimize vibrations during construction
 - Facing and railing will match the style shown on this slide
- Seismographs and Crack/Damage surveys included to monitor construction near sensitive buildings



Traffic Control

Staged Work Zones



- Closures/work zones will be broken into 3 stages to limit long-term disruptions & maintain hospital access
 - Stage 1 – western limits of County N intersection to eastern project limits
 - Stage 2 – western limits of Academy Street intersection to western limits of County N intersection
 - Stage 3 – western project limits to western limits of Academy Street intersection



Traffic Control

Anticipated Staging Timeframes

- Note: timeframes are approximate; actual durations determined by contractor
 - Stage 1: Eastern Project Limits (east of Spring Road) to County N
 - April 2025 – June 2025
 - Stage 2: County N to Academy Street
 - June 2025 – August 2025
 - Stage 3: Academy Street to 5th Street
 - August 2025 – November 2025



Real Estate

- Permanent and temporary acquisitions are being finalized now
- Real estate for the project needs to be clear by November 1, 2024
- Real estate services being led by:

Teri Weil

Consultant Real Estate Specialist

(608) 609-8821

teri@tva-llc.com



Project Schedule

Spring Road to Fifth Street Summary

- Final Plans Due – August 1, 2024
- Project LET – November 12, 2024
- Construction – Spring/Summer/Fall 2025
 - Tree clearing will begin over winter under a separate contract
 - Grubbing for tree removals will be addressed with this project



Project Schedule

Stoughton Area Summary

- Construction years



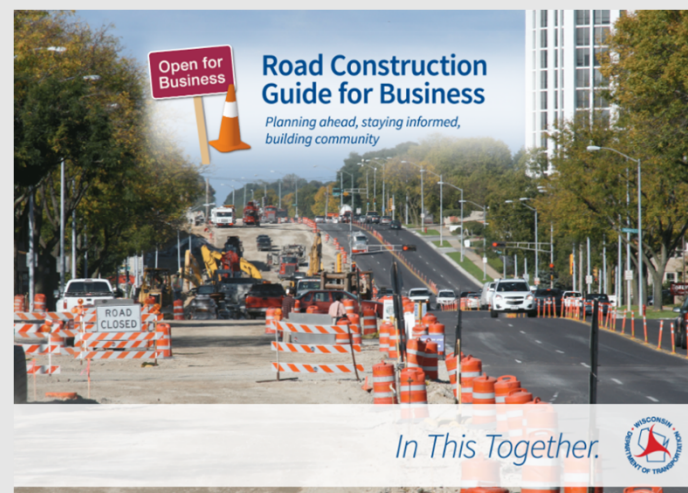
Note: Programmed years shown, earliest possible dates in parenthesis; all dates are subject to change depending on funding



Input / Comments

We're In This Together!

- Visit wisconsin.gov/together
 - Tips, tools and resources
 - 2021 business coordination guide
- Project team is here to help
 - What information would help you....
 - Inform customers about the project?
 - Coordinate with suppliers?
 - Communicate with employees?



Input / Comments

- Submit public comments by June 28th, 2024
- Public outreach will continue during construction
- Contact WisDOT with any questions or concerns:

David Schmidt, P.E.

WisDOT Project Manager

(608) 246-3867

David2.Schmidt@dot.wi.gov



Input / Comments

Stay involved and connected!



Project website



Project email sign up





US 51 – Segment 2A Stoughton – Madison Spring Road to Fifth Street

**Thank you for your interest
and comments!**

Public Involvement Meeting

May 29th, 2022

