



# **WIS 16**

# **WIS 157 to S Kinney Coulee Rd**

Public Involvement  
SW Region-La Crosse, La Crosse, WI

# Project Team

WisDOT

Randy Byom  
WisDOT Supervisor

DAAR Engineering

Teri Schopp  
Consultant Project Manager

SEH

Torey Leonard  
Project Designer

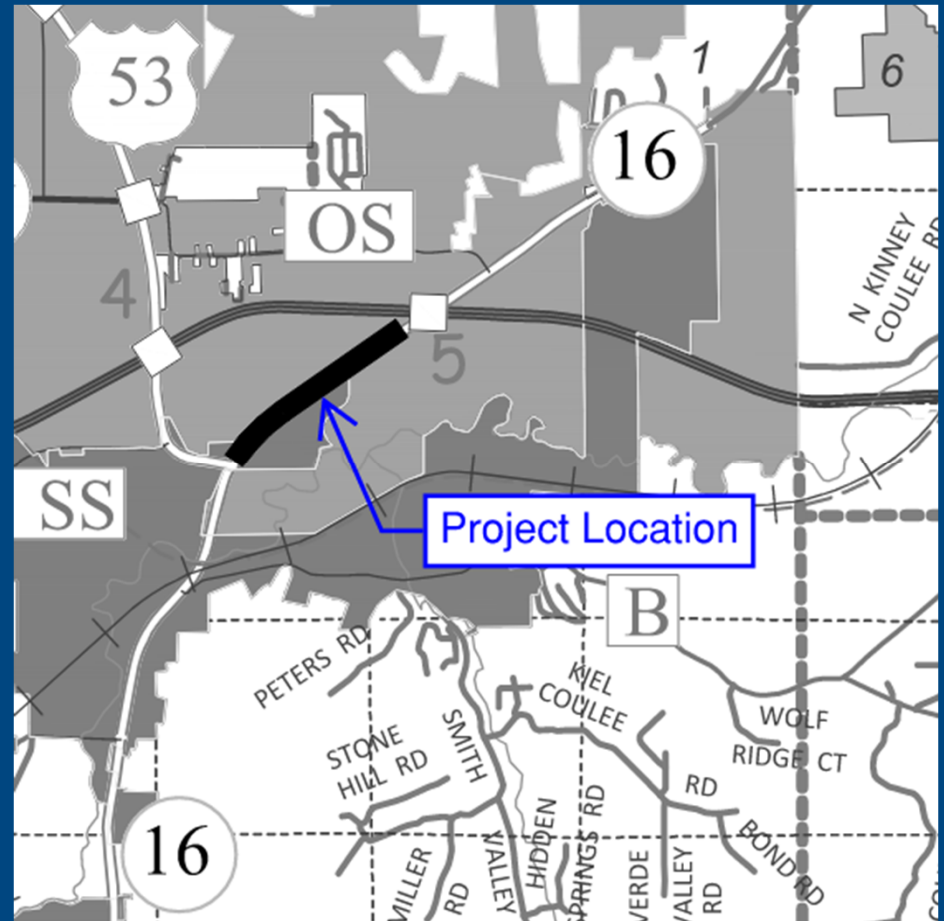


# Public Involvement Objectives

- Introduce the project team
- Provide a project summary
  - Location and limits
  - Purpose and need
  - Proposed improvements
  - Traffic control concepts
- Collect input and feedback
- Answer questions about the project

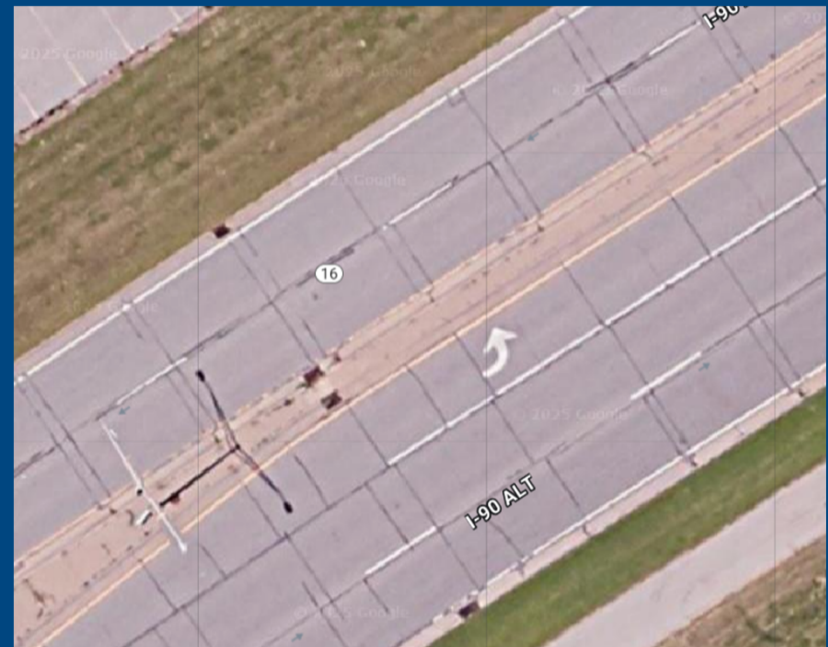


# WIS 16 from WIS 157 to S Kinney Coulee Rd



# Project Purpose and Need

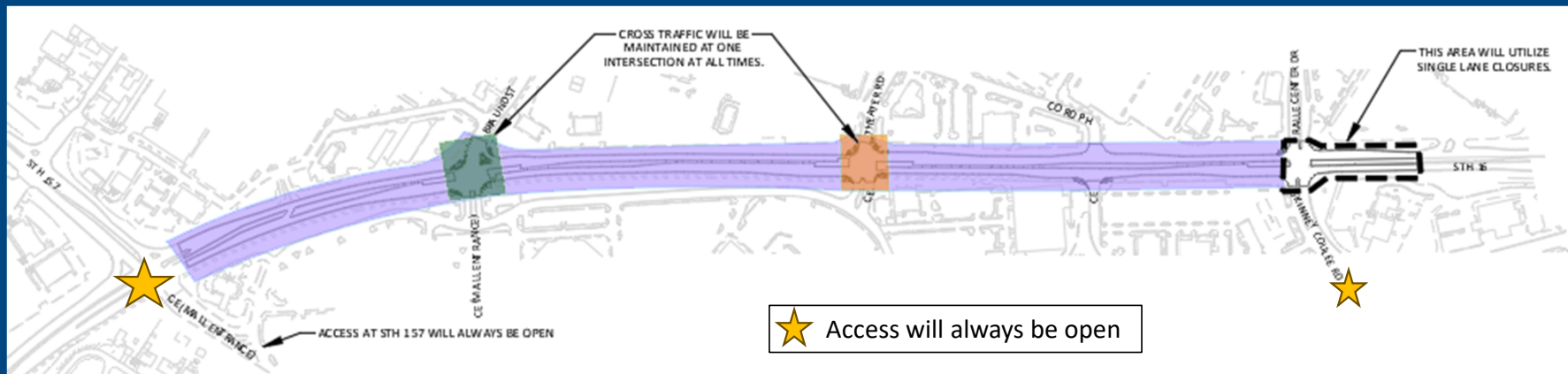
- Address deteriorating pavement and joints
  - Remove & replace asphalt
  - Concrete patching
- Upgrade curb ramps to meet ADA standards
- Repair or replace deteriorating storm sewer structures at various locations



# Traffic Control Concepts

## Option #1: Full Closure (7 weeks)

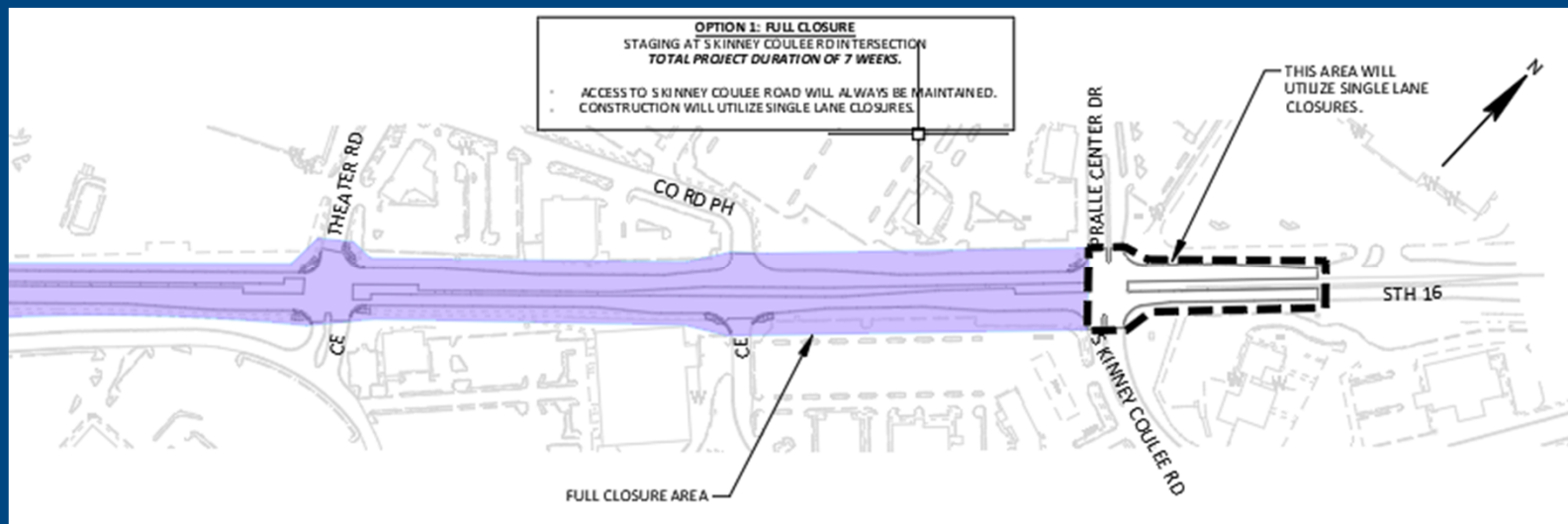
- Full closure from WIS 157 to S Kinney Coulee Rd
- Access across WIS 16 at either Braund St or Theater Rd maintained during closure
- Access to mall area at WIS 157 always open



# Traffic Control Concepts

## Option #1: Full Closure

- Staging at S Kinney Coulee Rd
- Access will be maintained at all times
- Construction will utilize single lane closures



# Traffic Control Concepts

## Option #1: Full Closure

- Full closure from WIS 157 to S Kinney Coulee Rd

### Opt.# 1: Positives

- Shortest time frame

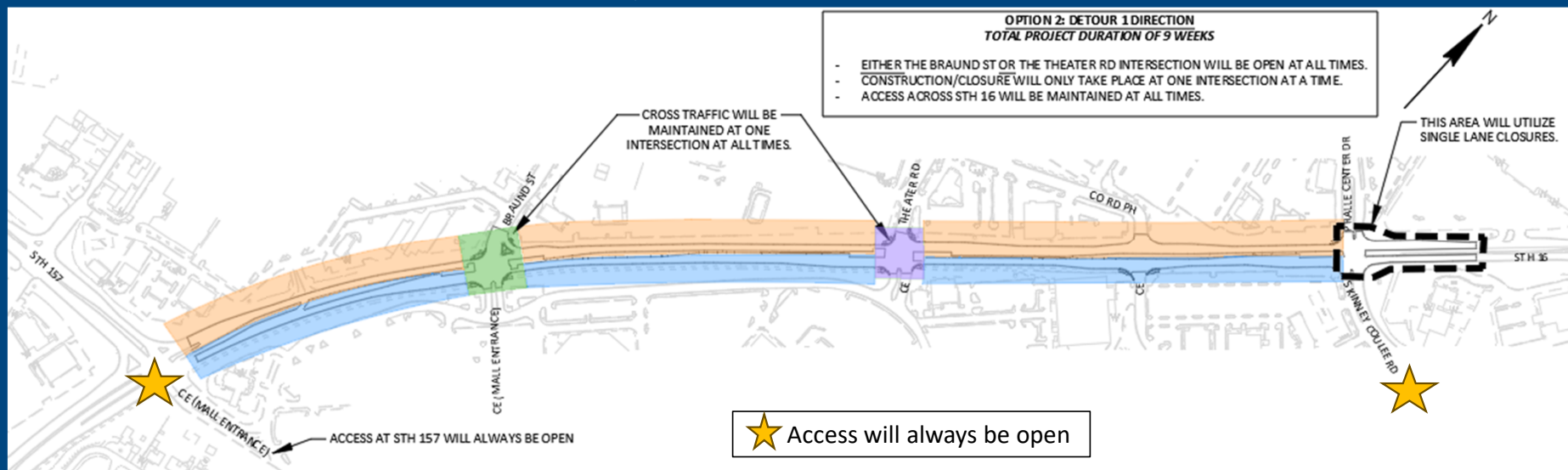
### Opt.# 1: Negatives

- No traffic maintained along WIS 16
- Restricted access to businesses
- Longer travel times



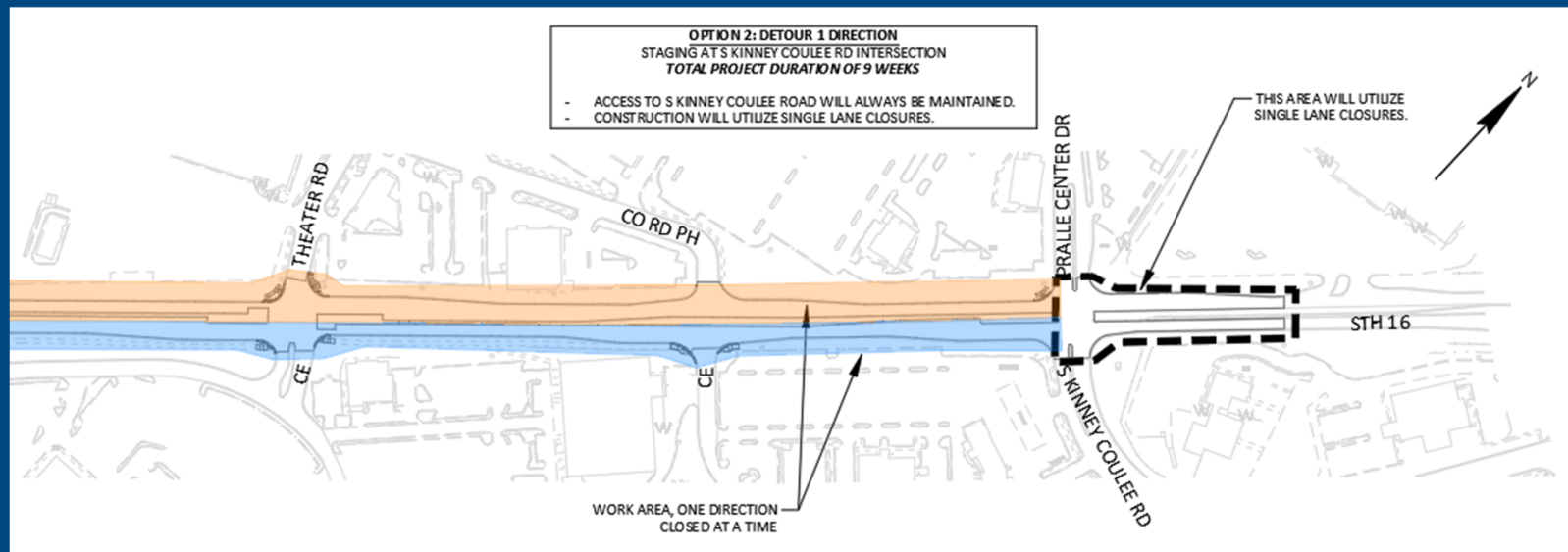
# Traffic Control Concepts

- Option #2: Detour 1 direction (9 weeks total)
- Close 1 side at a time, detour westbound traffic for entire duration
- Access across WIS 16 at either Braund St or Theater Rd maintained during closure
- Access to mall area at WIS 157 always open



# Traffic Control Concepts

- Option #2: Detour 1 direction
- Staging at S Kinney Coulee Rd
- Access will be maintained at all times
- Construction will utilize single lane closures



# Traffic Control Concepts

- Option #2: Detour 1 direction

## Opt.# 2: Positives

- Traffic flow maintained (1 direction)
- Improved access to businesses

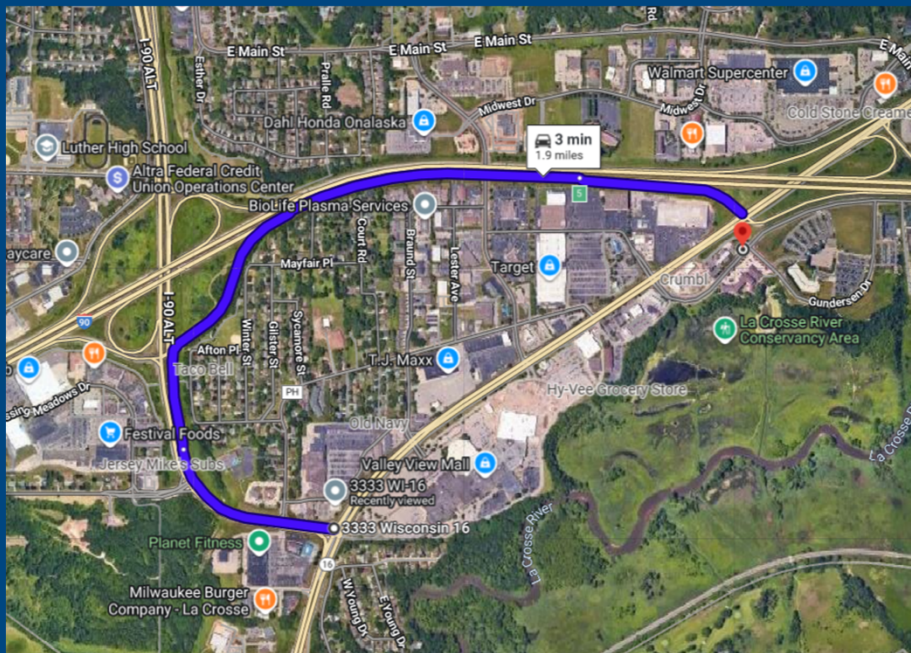
## Opt.# 2: Negatives

- Longer time frame vs. Opt.#1

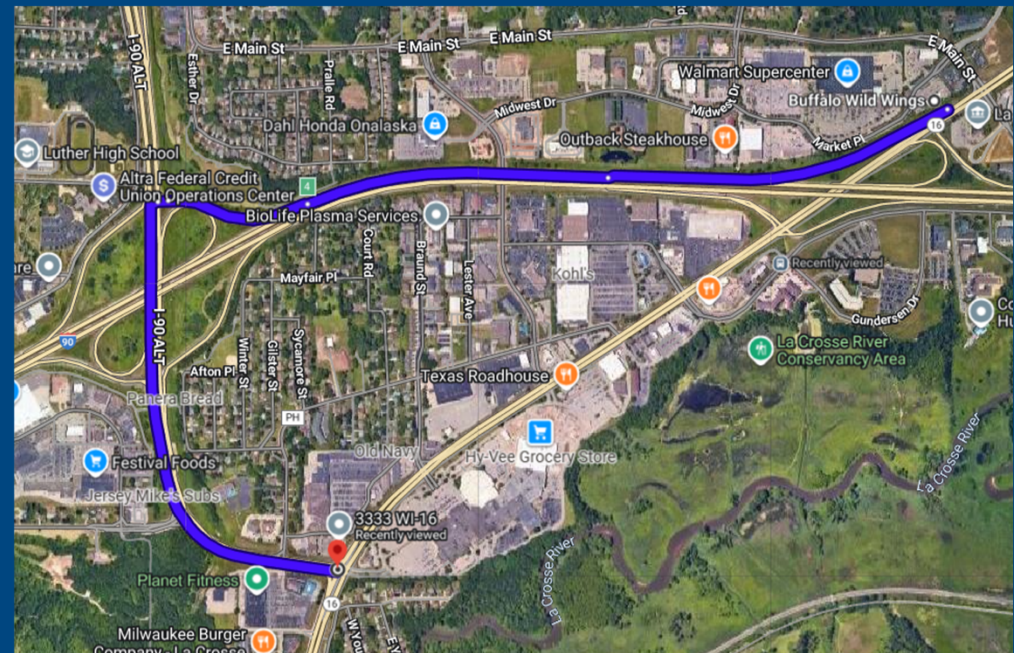


# Detour Routes

## Eastbound Detour



## Westbound Detour



# Other options eliminated from consideration

- Opt. 3: Single Lane Closures, Bi-directional Traffic (17 weeks total)
- Close 1 side at a time, maintain bi-directional traffic on one side of WIS 16
  - **Negatives:**
    - Longest timeframe
    - Increased traffic backups at all intersections
- Opt. 4: Detour each direction for half of project (9 weeks total)
- Close & detour 1 side at a time, swapping halfway through
  - **Negatives:**
    - Longer time frame
    - Unworkable backups at WIS 16 and WIS 157 Intersection



# Project Contacts

## Primary Contact

Torey Leonard, PE  
SEH  
Project Designer  
(608) 498-4019  
tleonard@sehinc.com

## Additional Contacts

Randy Byom, PE  
WisDOT Supervisor  
(608) 785-9966  
Randy.byom@dot.wi.gov

Teri Schopp, PE  
DAAR Engineering  
Consultant Project Manager  
teri.Schopp@daarcorp.com  
(920) 342-2176

In this together site: <https://wisconsindot.gov/pages/projects/in-together/default.aspx>

La Crosse Study: <https://wisconsindot.gov/Pages/projects/by-region/sw/533516-lacrosse/default.aspx>

