


WIS 19 and Westmount Drive Intersection

Wisconsin Department of Transportation

Public Involvement Presentation

March 29, 2023



1

Presentation agenda

- Project overview
- Previous coordination
- Project funding sources
- Intersection Improvement Alternatives
 - Offset Left-Turn Lanes on WIS 19
 - Single Lane Roundabout
- Summary of alternatives
- Business Coordination
- Contact information



2

Project overview

WIS 19 at Westmount Drive intersection in Sun Prairie

3

Project overview

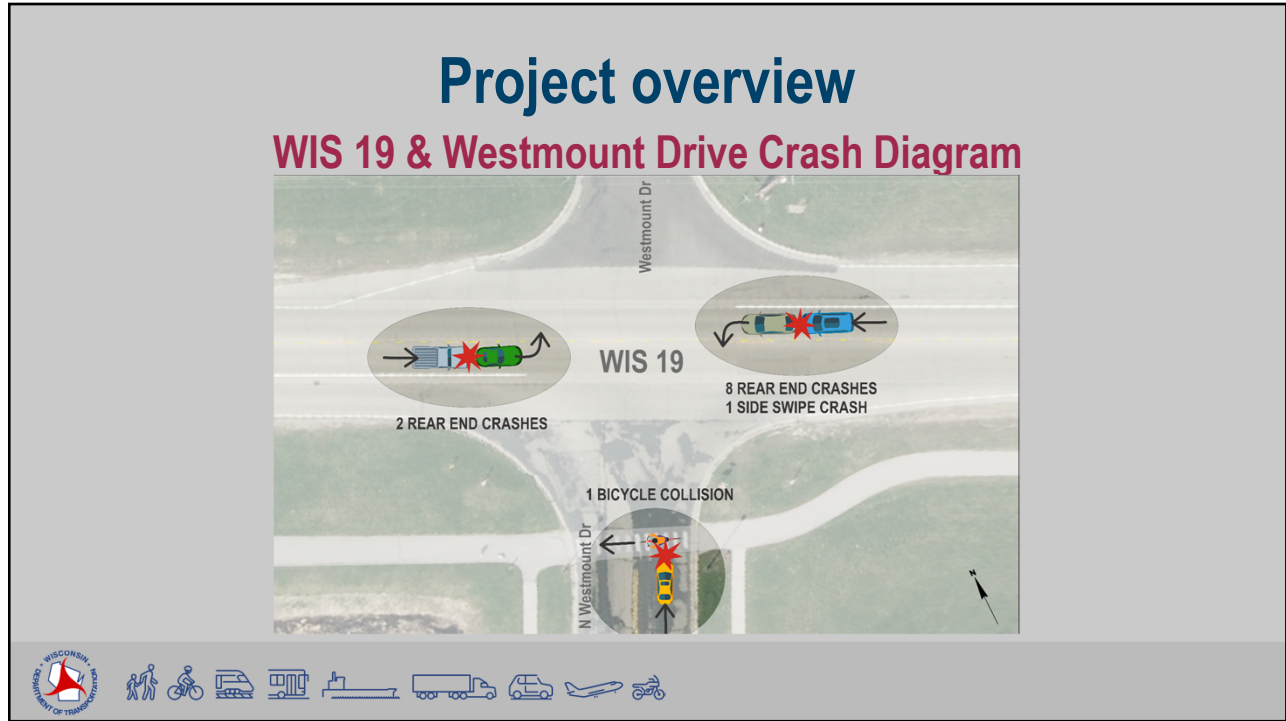
Project purpose:

- Reduce the overall number and severity of crashes along WIS 19 at the Westmount Drive intersection.

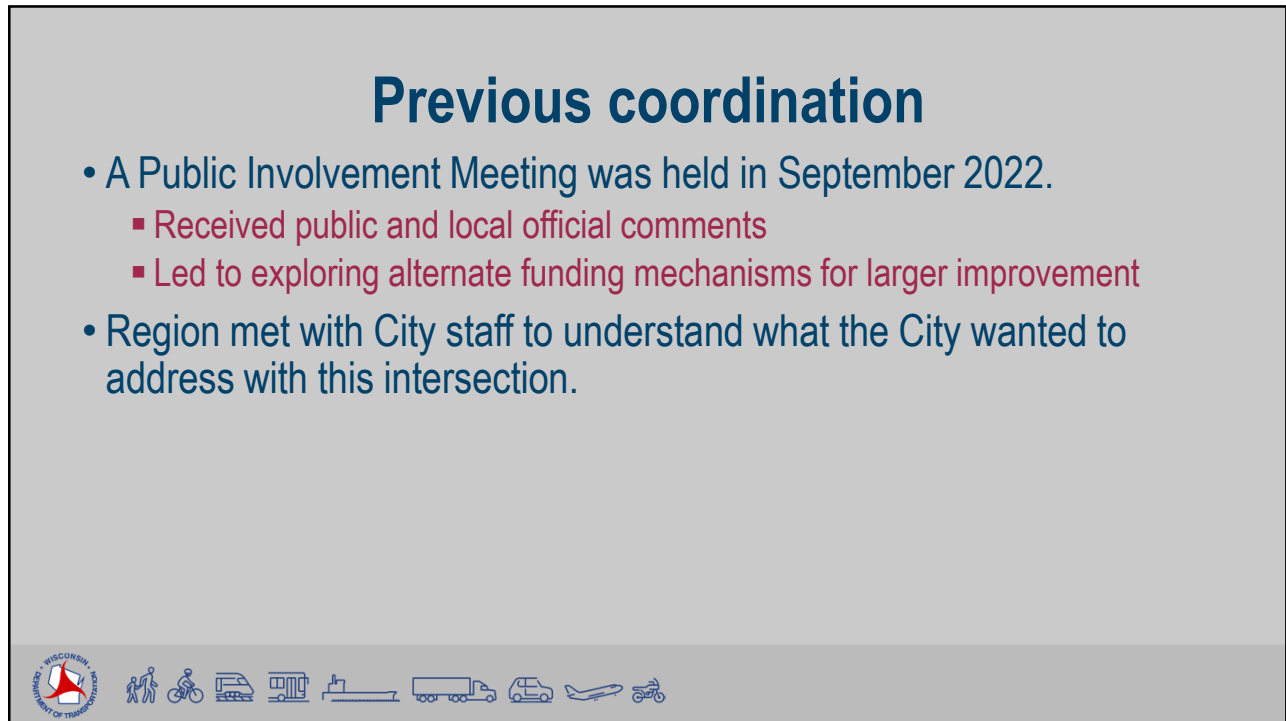
Project need:

- From 2014 through 2018, 12 crashes occurred at the intersection.
- 11 of the crashes involved stopped traffic turning left on WIS 19.
- 2019 through preliminary 2022 crashes show similar level of crashes

4



5



6

Project funding sources

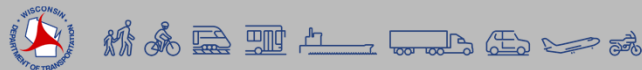
- Highway Safety Improvement Program (HSIP)
 - Program goal – achieve significant reduction in traffic fatalities and serious injuries on public roads.
 - Requires a data-driven, strategic approach to improve the safety of the road while maintaining performance for years to come.
 - Federal-aid program that funds projects with quick timeframes and smaller budgets.
- 3R System (Resurfacing, Restoration, and Rehabilitation)
 - Funds improvements to existing roadways, the minor addition of lanes, traffic and safety improvements, and minor realignments of roadway.
 - Includes resurfacing, reconditioning, pavement replacement, and reconstruction projects
 - Utilizes federal, state, and/or local funds to pay for projects on the State Trunk Highway system



7

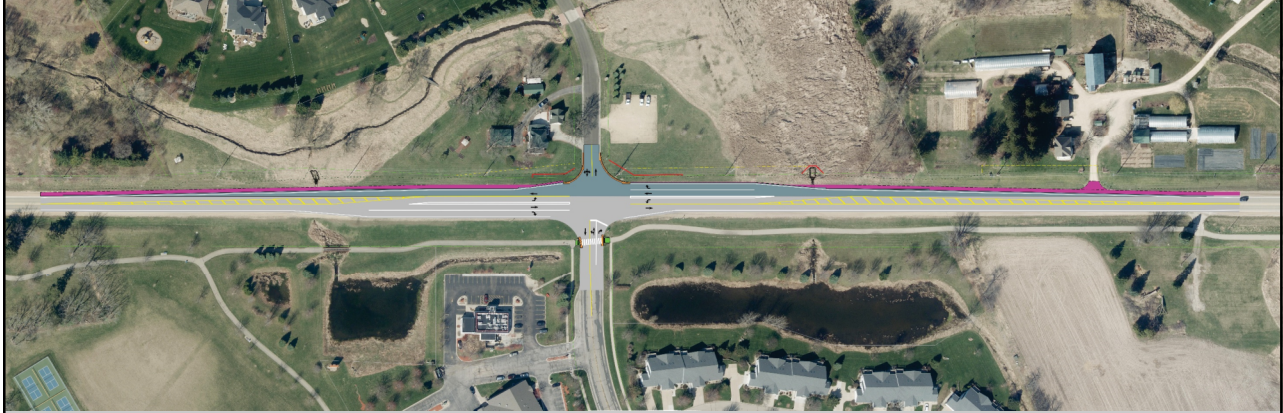
Previous coordination

- Region met with DTIM (Division Transportation Investment Management)
- Prediction analysis to evaluate potential monetized safety benefits and determine a safety benefit to construction cost ratio.
- Following our policies, a roundabout could be constructed at Westmount Drive intersection, utilizing 3R funding for up to \$1.95 M
- Current estimate for a roundabout is \$2.3 - \$2.5 M
- The city of Sun Prairie has agreed to partner with WisDOT which allows a roundabout to be a viable alternative.



8

Offset left-turn lanes on WIS 19



9

Offset left-turn lanes on WIS 19

- Preliminary Construction Cost Estimate
 - \$750,000 - \$850,000
- Funding
 - Highway Safety Improvement Program (HSIP)
- Schedule
 - Construction in 2025



10

Offset left-turn lanes on WIS 19

• Pros

- Separates left turning vehicles from through traffic
- Reduces rear-end crashes
- Improves intersection operations
- Less impacts to properties and less right-of-way needed

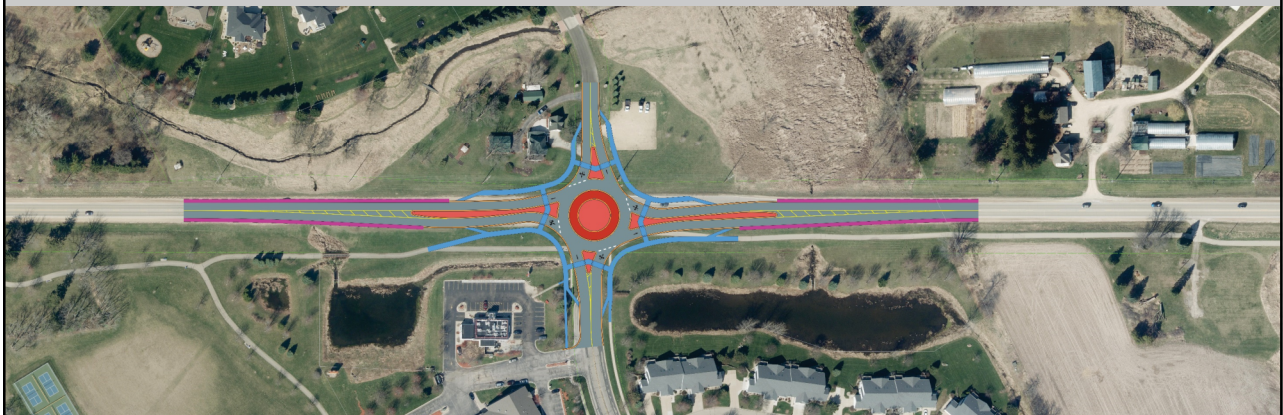
• Cons

- Possibility of angle crashes, which can be more severe crashes
- No dedicated pedestrian facilities or marked crossing of WIS 19
- Additional lanes will lengthen pedestrian crossing distance
- Side-street may experience delays during peak hours due to needing to cross more lanes of traffic.



11

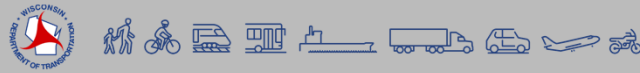
Single lane roundabout



12

Single lane roundabout

- Preliminary construction cost estimate
 - \$2.3 - \$2.5 million
- Funding
 - 3R (Resurfacing, Restoration and Rehabilitation)
 - Funded through partnership with city of Sun Prairie
 - WisDOT to fund up to \$1.95 million
 - City of Sun Prairie to cover remainder
- Schedule
 - Construction in 2026



13

Single lane roundabout

- Pros
 - Reduces severity of crashes
 - Reduces speed through the intersection
 - Dedicated pedestrian facilities
 - Pedestrians only need to cross one lane of traffic at a time
 - Reduces side-street delay
- Cons
 - Larger impacts to properties and more right of way needed
 - Potential to still experience rear end crashes / property damage crashes



14

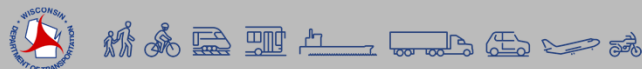
Summary of alternatives

Offset left turn lanes

- Preliminary cost
 - \$750,000 - \$850,000
- Funding
 - HSIP
- Schedule
 - Construction in 2025

Single lane roundabout

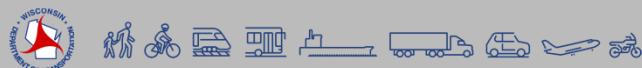
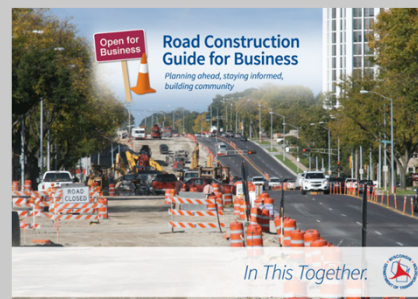
- Preliminary cost
 - \$2.3 - \$2.5 million
- Funding
 - 3R
 - WisDOT up to \$1.95 million
 - City of Sun Prairie remainder
- Schedule
 - Construction in 2026



15

Business coordination We're In This Together!

- Visit wisconsin.gov/together
 - Tips, tools and resources
 - New (2021) business coordination guide
- Project team is here to help
 - What information would help you....
 - Inform customers about the project?
 - Coordinate with suppliers?
 - Communicate with employees?



16

Contact information

David Schmidt, P.E.
WisDOT Project Manager
WisDOT Southwest Region
2101 Wright Street
Madison, WI 53704
(608) 246-3867

david2.schmidt@dot.wi.gov

Brian Genskow, P.E.
Consultant Project Manager
SRF Consulting Group, Inc
6720 Frank Lloyd Wright Ave
Middleton, WI 53562
(608) 298-5422

bgenskow@srfconsulting.com

Project Website:

wisconsin.gov/Pages/projects/by-region/sw/wis19-westmountintersection/default.aspx



17



WIS 19 Westmount Drive Intersection

Thank you for your interest
and comments!

Public Involvement Meeting

March 29th, 2023



18