

WIS 23

Spring Green – Reedsburg County GG to Elder Ridge Road

Wisconsin Department of Transportation

Public Involvement Meeting

September 2022

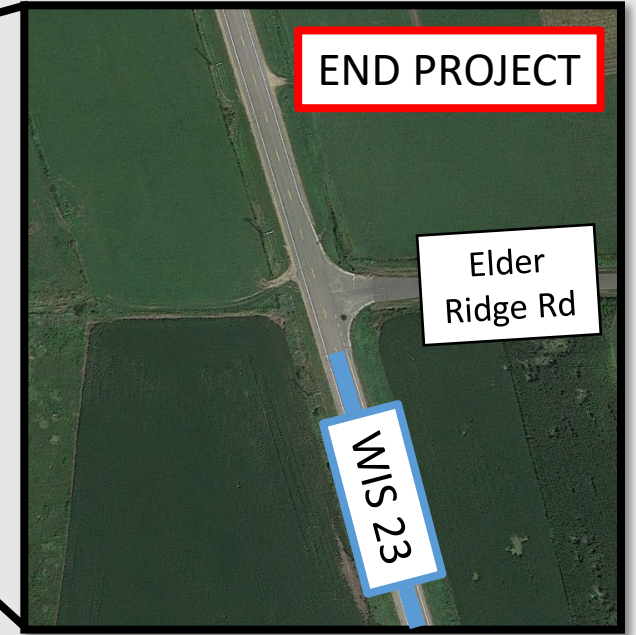
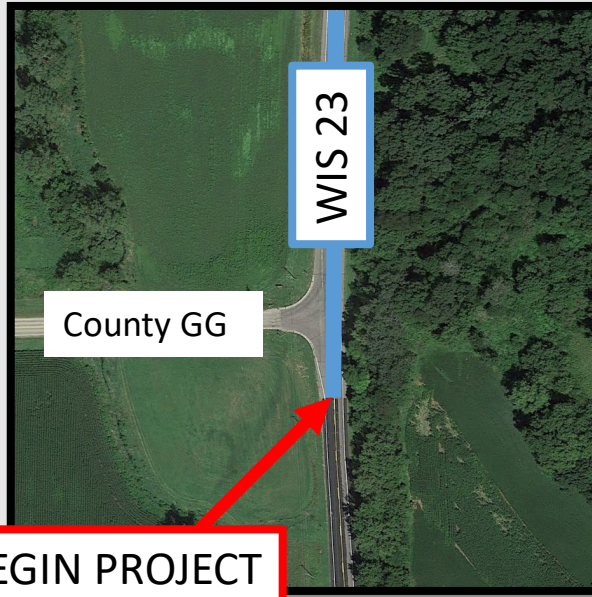
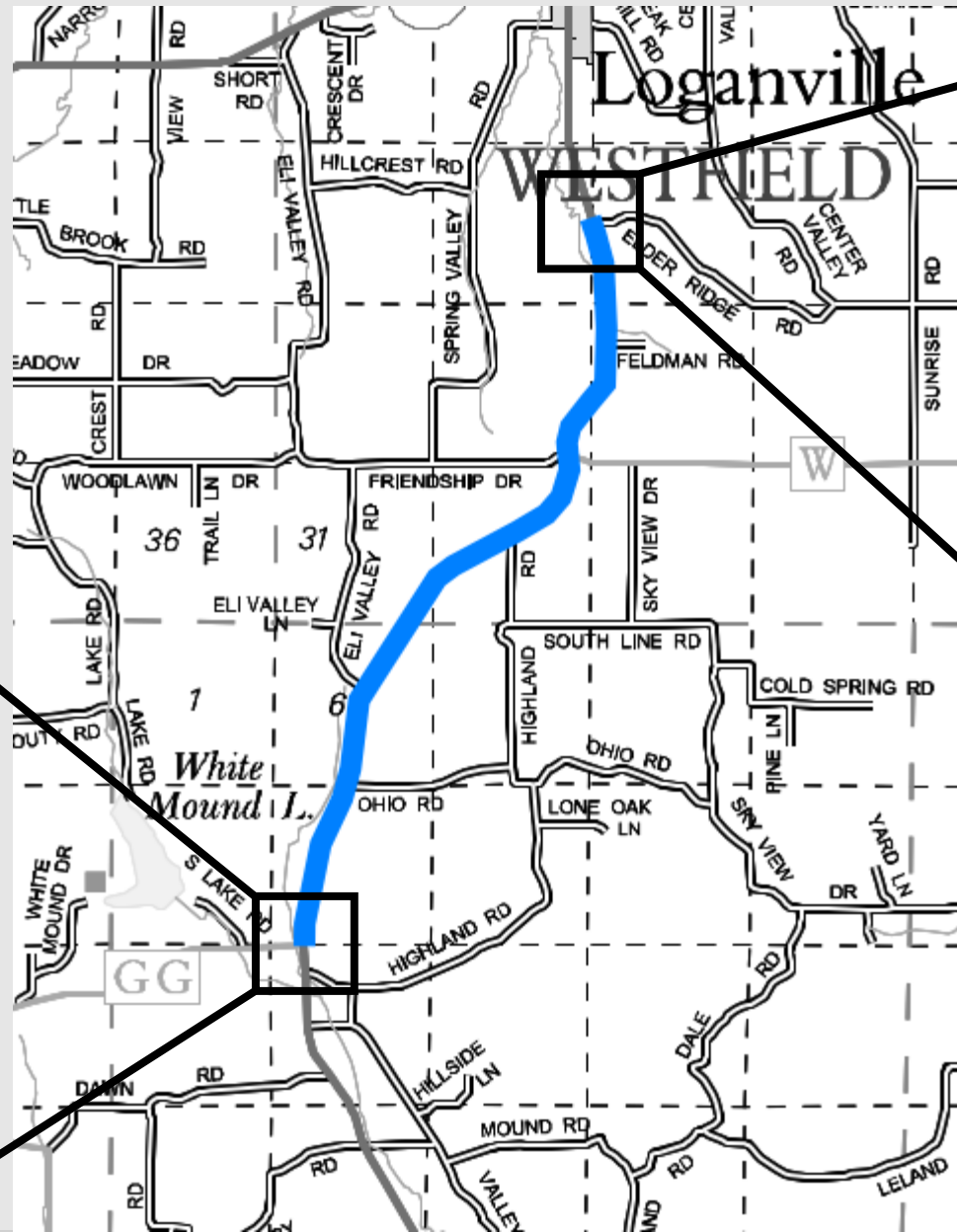


Presentation Agenda

- Project Limits
- Project Purpose & Need
- Design Overview
- Recent Activities
- Upcoming Schedule
- Contact Information



What are the project limits?



Why do we need this project?

Safety Concerns



Energy Absorbing Terminal (EAT)



Existing end of guardrail on WIS 23

Why do we need this project?

Pavement Deterioration



WIS 23 Fatigue Cracking and Rutting



WIS 23 Raveling and Patchwork

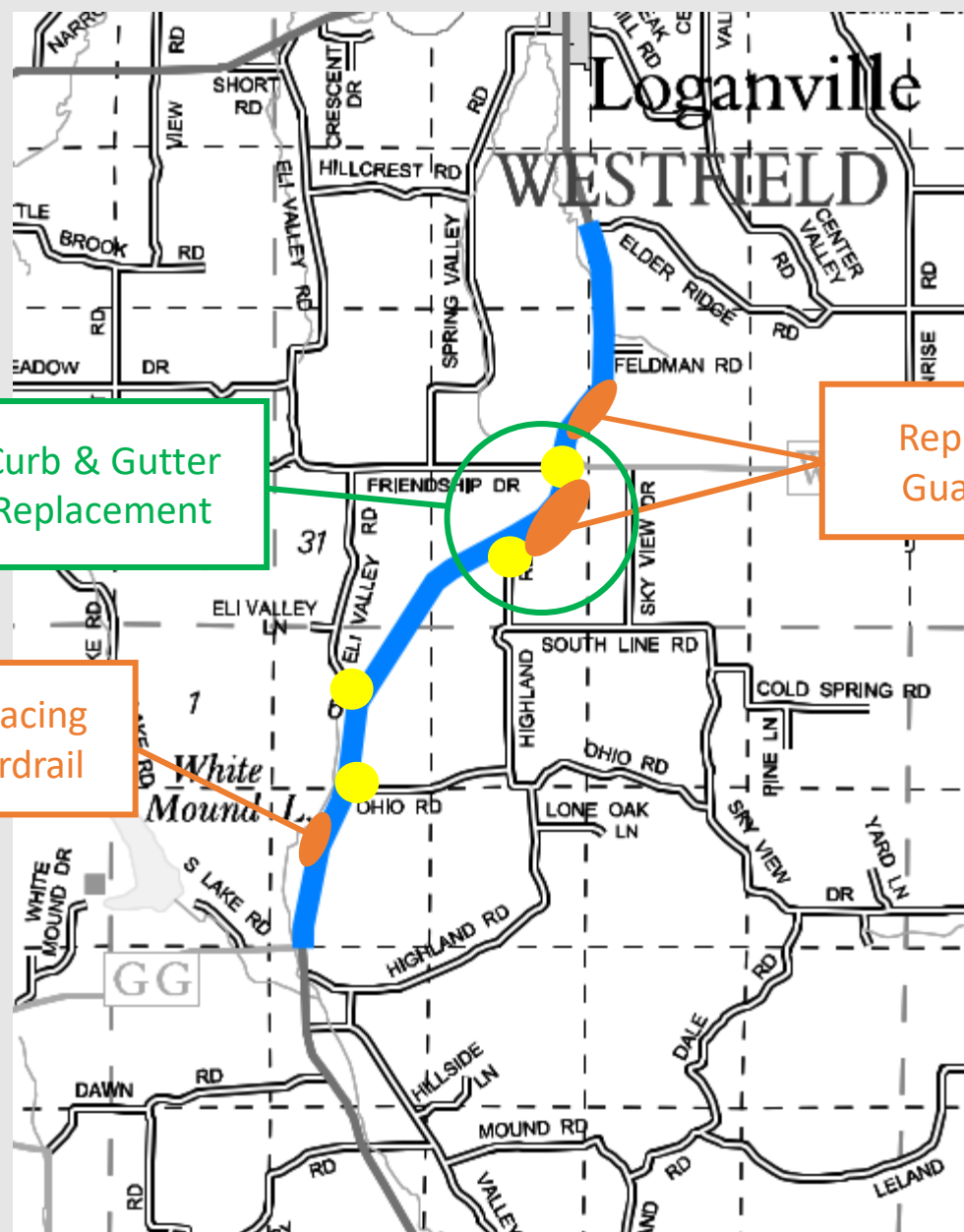
Why do we need this project?

Culvert Maintenance Concerns



Deteriorated Culvert Pipe

What improvements are proposed?



Curb & Gutter Replacement

Replacing Guardrail

Replacing Guardrail

Legend

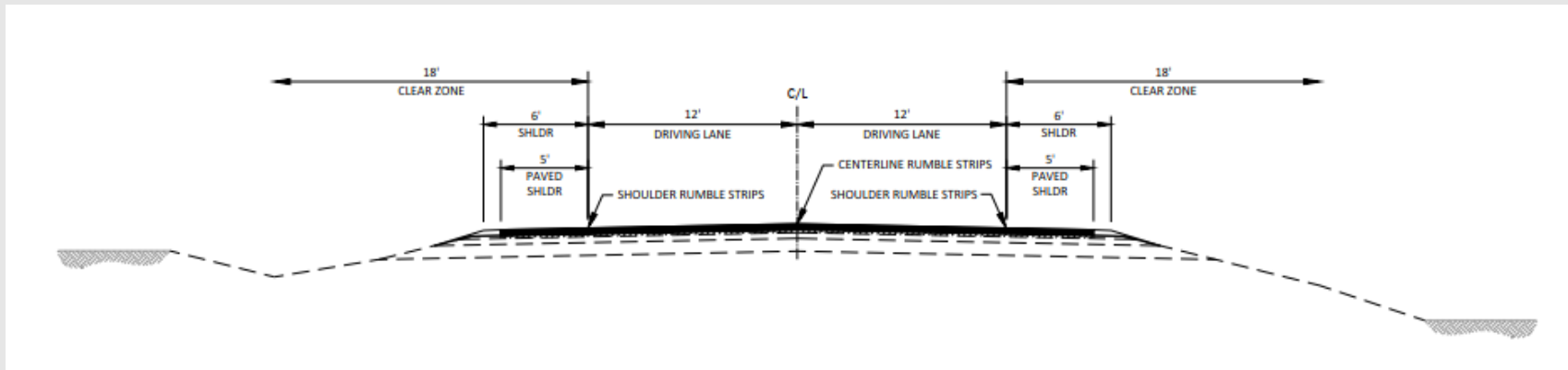
- Curb & Gutter and Pavement Replacement at Intersections



Design overview

Typical Section - WIS 23

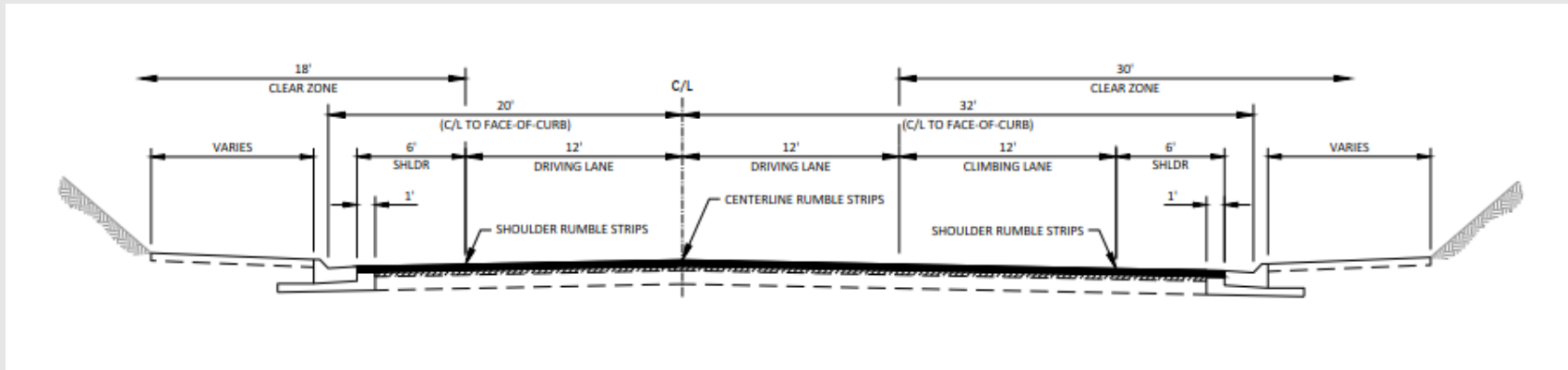
- Pavement
 - Mill 2-Inches Existing Pavement
 - Pave 4-Inches of Hot Mix Asphalt (HMA) Pavement
- New shoulder aggregate
- Pavement Markings
- Centerline and Shoulder Rumble Strips



Design overview

Typical Section (CURB & GUTTER REPLACEMENT)- WIS 23

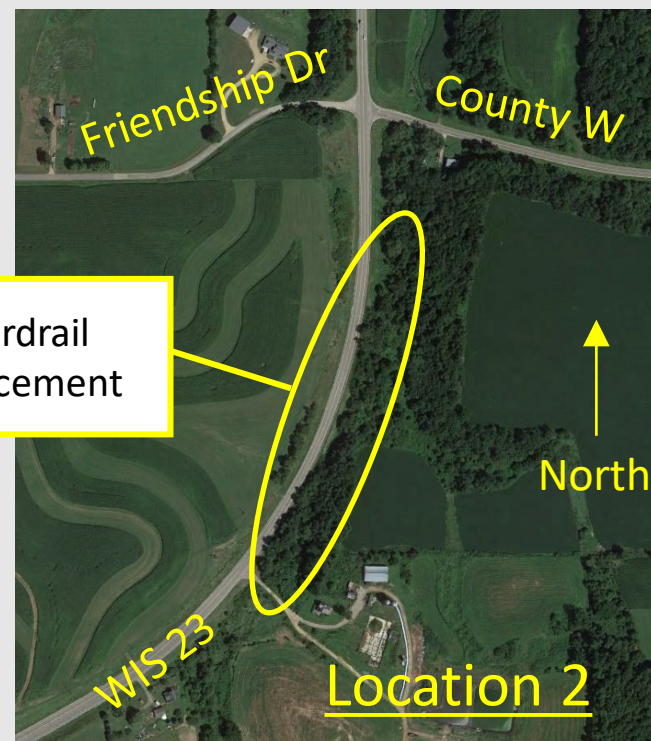
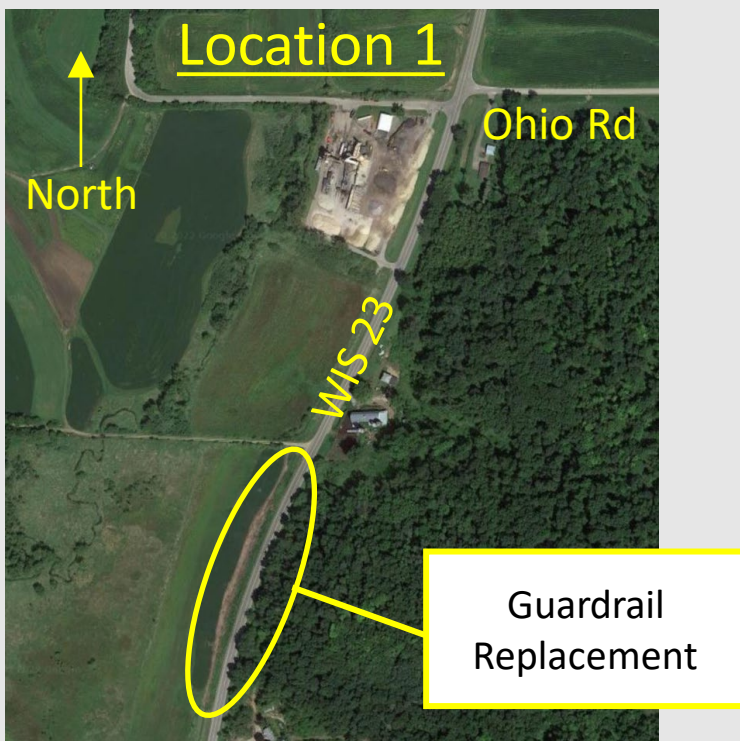
- Pavement
 - Mill 2-Inches Existing Pavement
 - Pave 4-Inches of Hot Mix Asphalt (HMA) Pavement
- New Curb & Gutter
- Pavement Markings
- Centerline and Shoulder Rumble Strips



Design overview

Guardrail Replacement

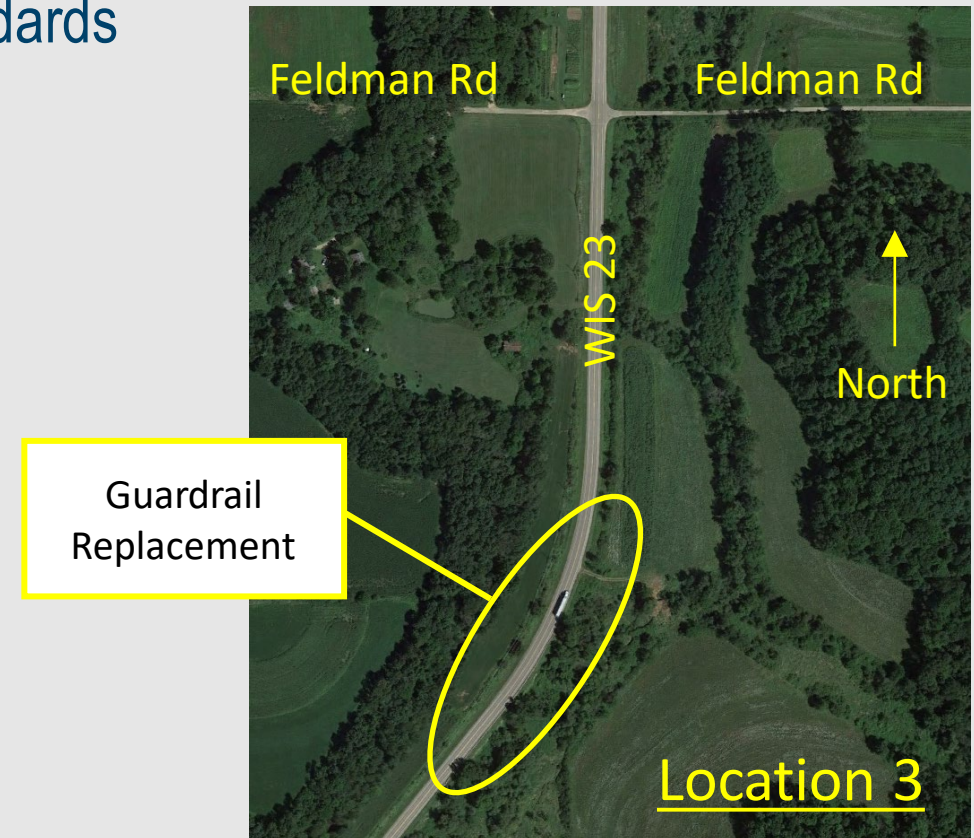
- Guardrail replacements to meet current design standards



Design overview

Guardrail Replacement Cont'd...

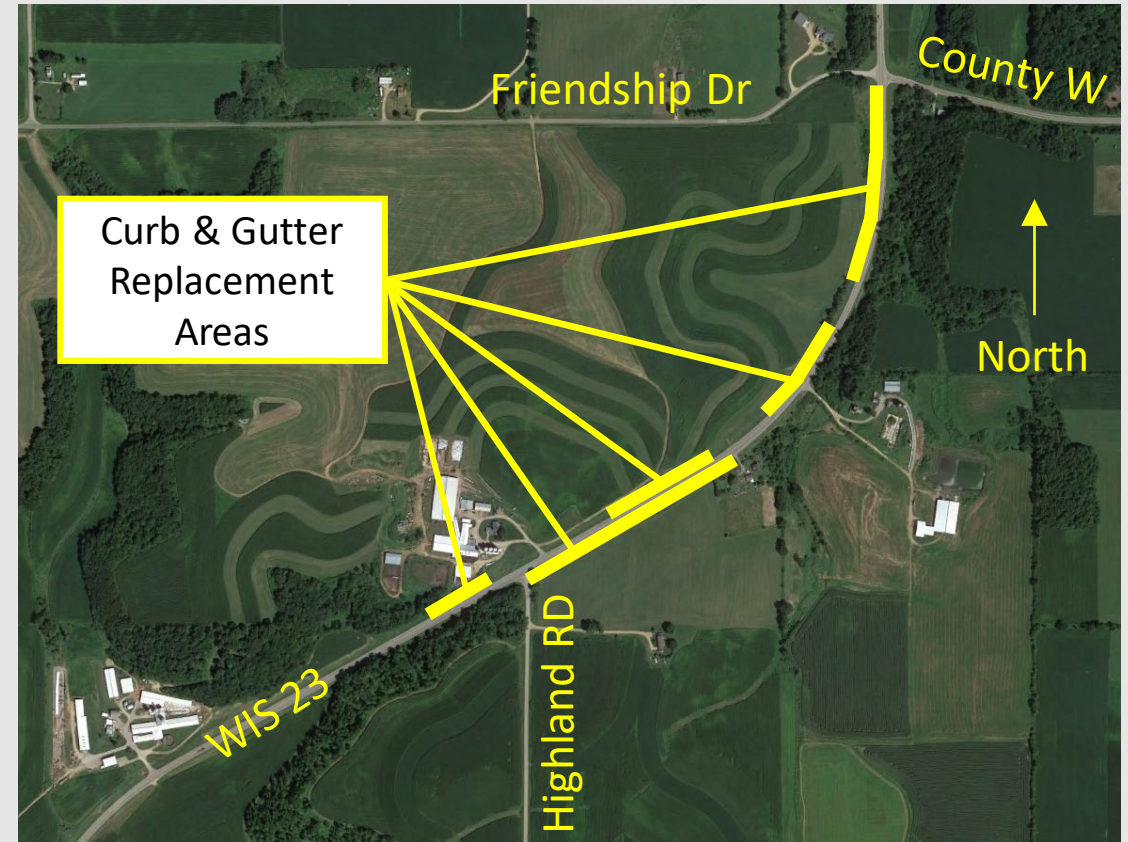
- Guardrail replacements to meet current design standards



Design overview

Curb & Gutter Replacement

- Replace the existing curb & gutter



Design overview

Curb & Gutter Replacement at Intersections

- Replace curb & gutter at intersections:
 - Ohio Road
 - Eli Valley Road
 - Highland Road
 - County W
 - Friendship Drive



Recent activity

Summer 2022

- Survey completed
- Agency & Utility Coordination Initiated

Fall 2022 & beyond

- Preliminary roadway plans
- Environmental report
- Webpage created



What is next?

- Preliminary Design Complete September 2022
- Draft Environmental Report October 2022
- Design Study Report February 2023
- Final (90%) Plans (Advanceable) January 2025
- PS&E (Advanceable) May 2025
- Let Date (Advanceable) August 2025
- Construction (Advanceable) Spring/Summer 2026



Thank you for your time

If you have any comments, questions, or concerns please send Dan Tracy with Jewell Associates Engineers, Inc. an email, give him a call, or send him mail.



Project Contact Information

Marc Schweiger, PE

WisDOT Project Development Supervisor

Marc.Schweiger@dot.wi.gov

(608)-245-2633

Mahesh Shrestha, PE

WisDOT Project Manager

Mahesh.Shrestha@dot.wi.gov

(608)-245-2674

Dan Tracy, PE

Jewell Associates Engineers, Inc.

Consultant Project Manager

Dan.Tracy@jewellassoc.com

560 Sunrise Drive

Spring Green, WI 53588

(608)-588-7484

