



WIS 28

Bridge Deck Replacement

Wisconsin Department of Transportation
(WisDOT)

Public Involvement Meeting
Mayville, WI

January 28th, 2026

Design Team

- Craig Hardy – WisDOT Project Manager
- Andy Luedtke – WisDOT Project Engineer

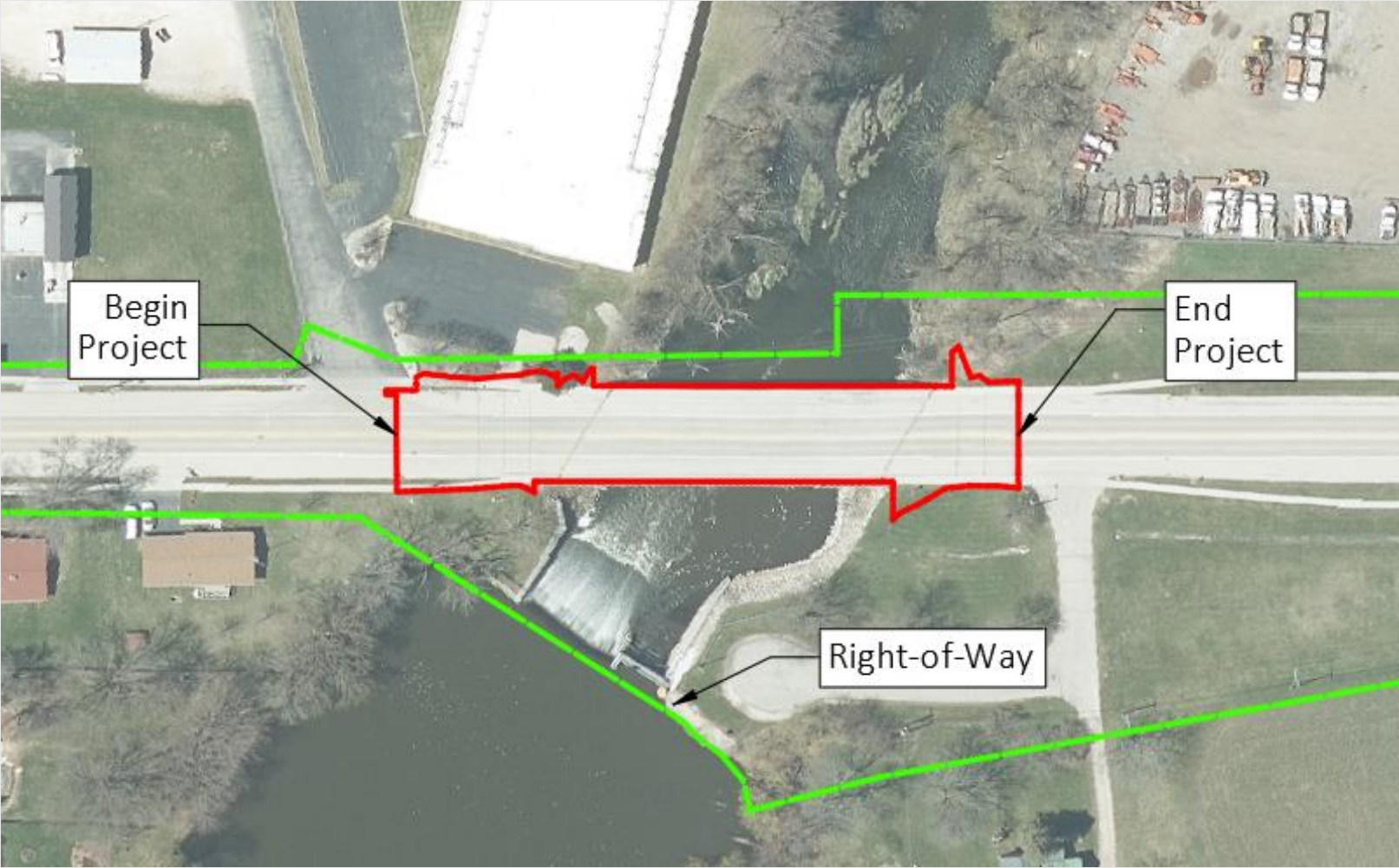


Presentation Overview

- Project Limits
- Project Needs
- Proposed Improvements
- Detour Information
- Project Schedule
- Project Contacts
- Questions and Open House



Project Limits



Project Needs

- The concrete deck has large spalls with exposed rebar



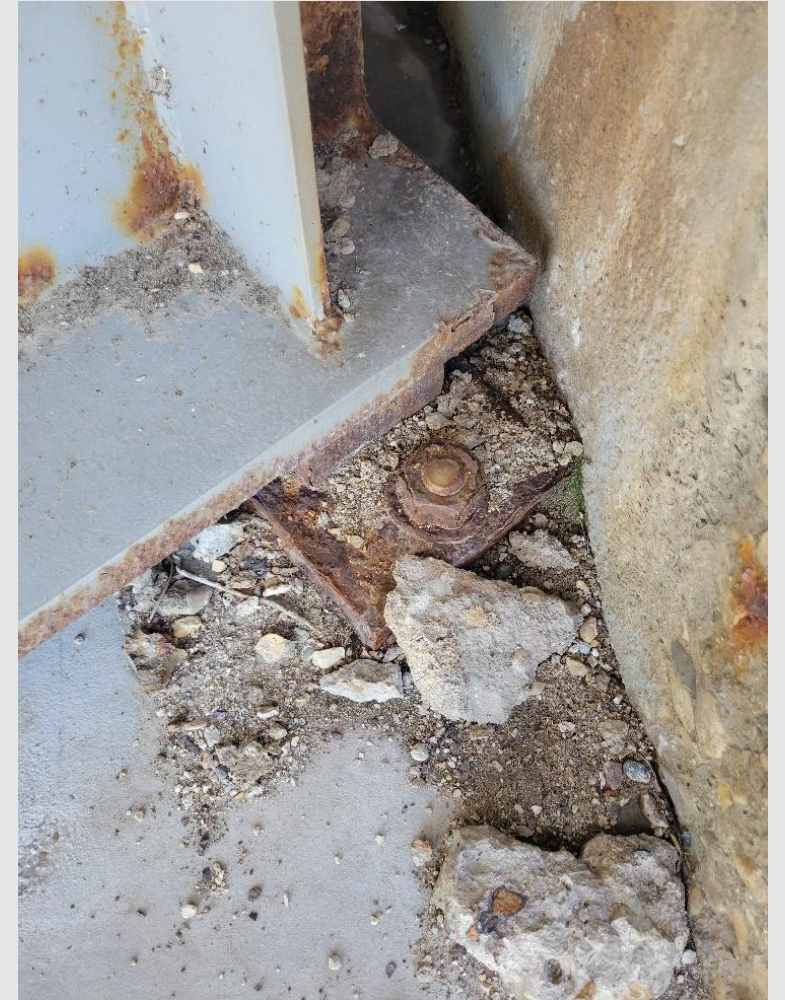
Project Needs

- Concrete surface in need of repair
- Riprap washout



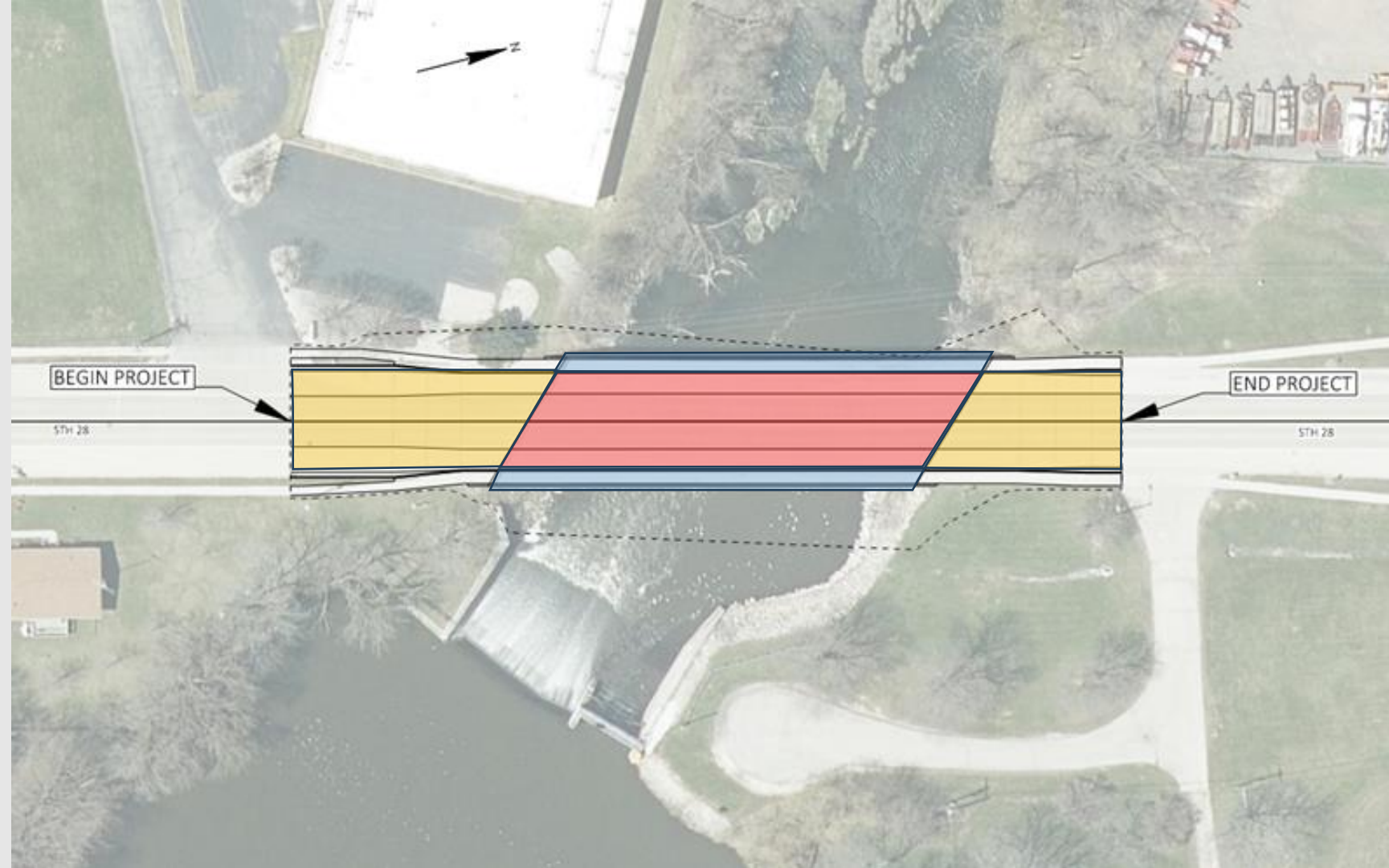
Project Needs

- Rusted steel members



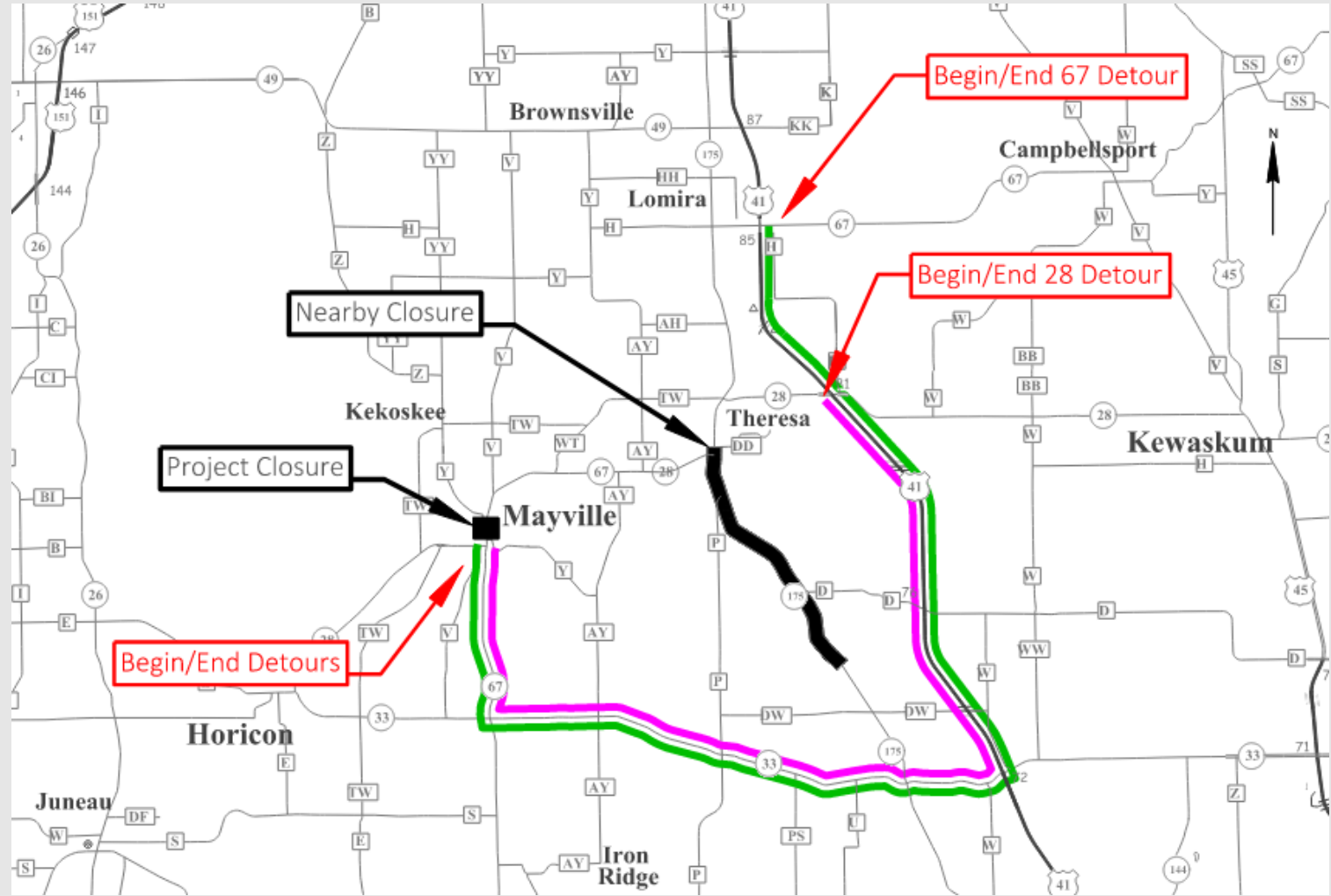
Proposed Improvements

- Replace bridge deck
- Replace roadway approach slabs
- Widen sidewalk on bridge from 5' to 6'
- Concrete Surface Repairs
- Steel Girder Painting
- Add riprap underneath



Detour

- WIS 28
 - WIS 67 to WIS 33 to I-41 to WIS 28
- WIS 67
 - WIS 67 to WIS 33 to I-41 to WIS 67



Schedule

- Final plans due – August 2026
- Construction – Summer 2027



Questions

For more information, please contact:

Andy Luedtke
Design Leader
608-246-3269

Andrew.Luedtke@dot.wi.gov

Craig Hardy, P.E.
Project Manager
608-246-5406

Craig.Hardy@dot.wi.gov

Hannah Punzel
WisDOT SW Region Communications Manager
Phone: (608) 246-7907
Email: Hannah.Punzel@dot.wi.gov

