



WIS 33 and WIS 68 Pavement replacement

Wisconsin Department of Transportation (WisDOT)

Public Involvement Meeting
Fox Lake Community Center
248 E State St, Fox Lake, WI

December 4, 2024



Design team

- Justin Kutschenreuter – WisDOT Project Supervisor
- Matthew Lamb – WisDOT Project Manager
- Bailey LaMere – WisDOT Project Engineer



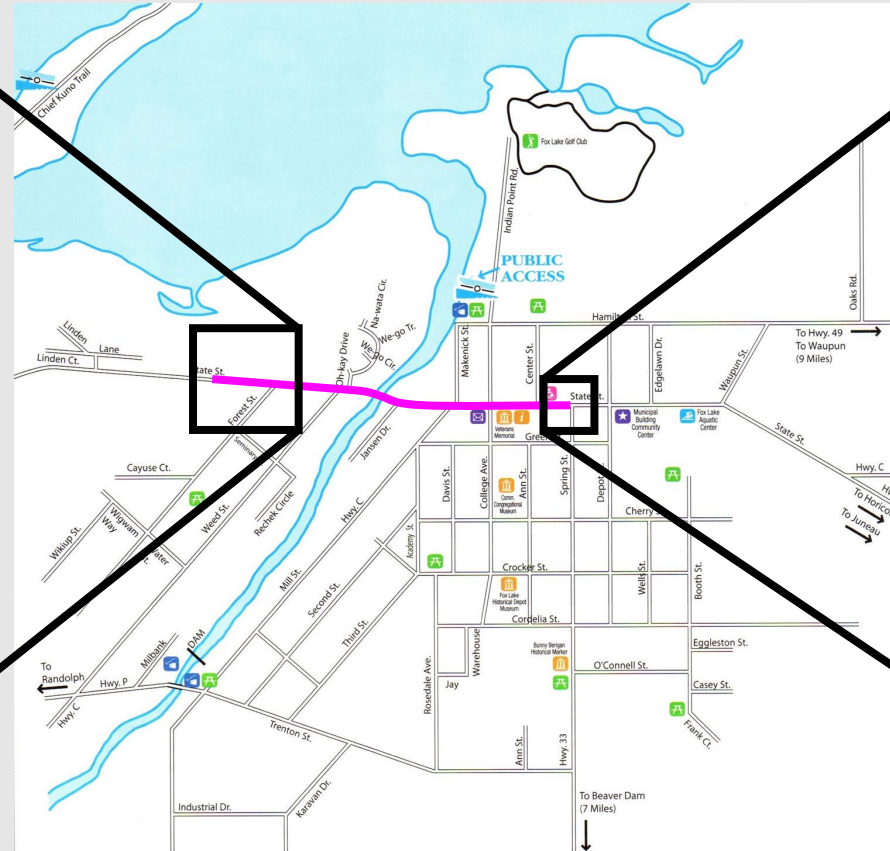
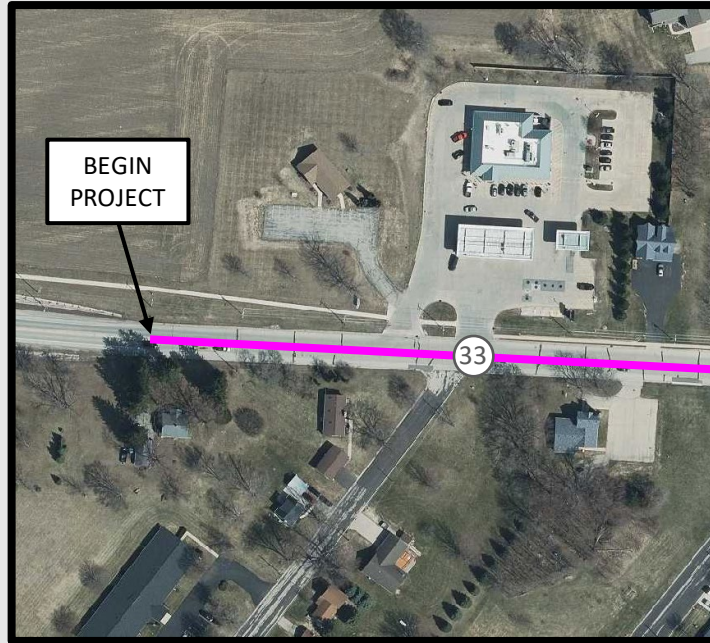


Agenda

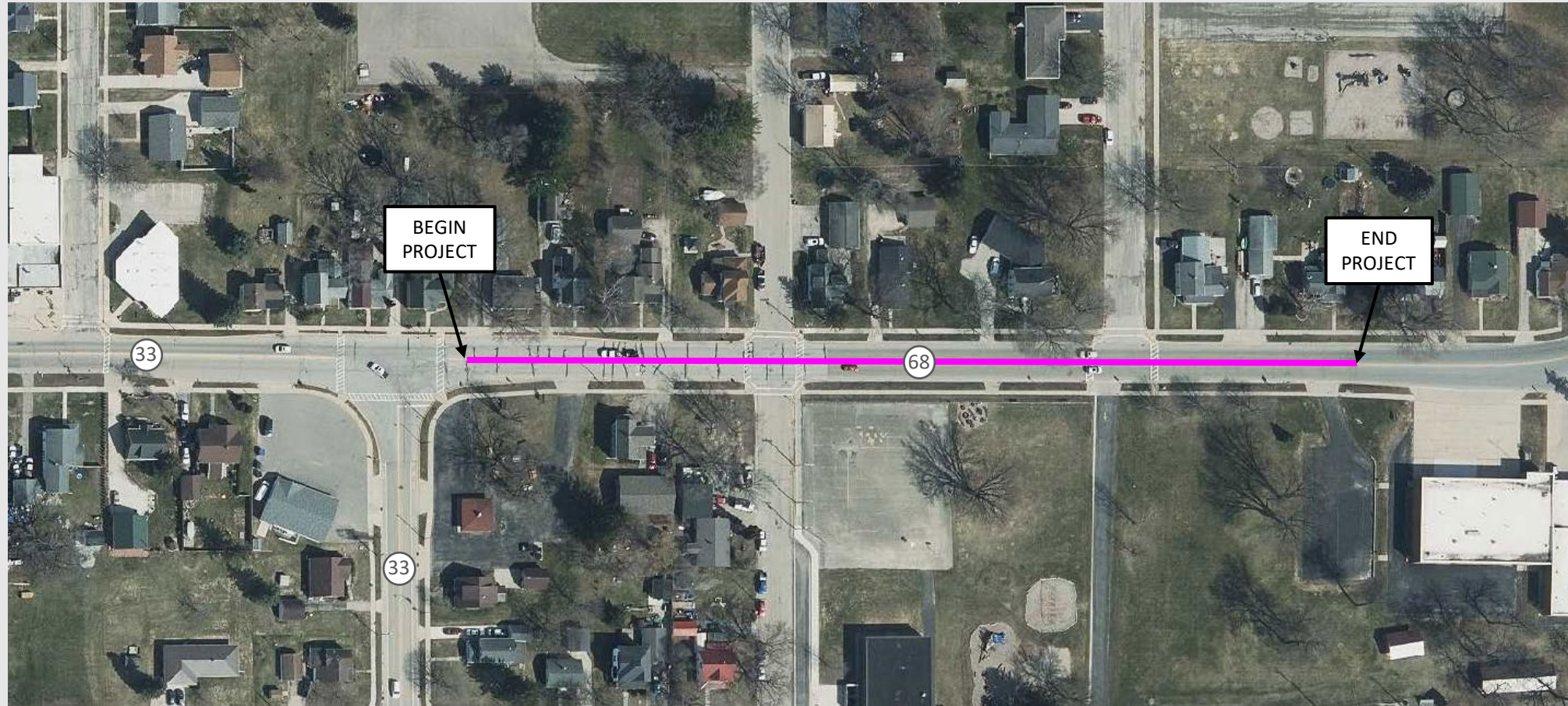
- Project limits
- Project purpose and need
- Proposed improvements
- Traffic impacts
- Real estate
- Project schedule
- Project contacts and project website
- Open house



Project limits: WIS 33



Project limits: WIS 68





Project needs

Pavement deterioration





Project needs

Curb ramps





Project needs

Bridge pavement approach slabs



Proposed improvements

- Remove existing pavement and base material and replace with concrete pavement with new base material
- Replace curb and gutter
- Replace sidewalk in spot locations
- Update curb ramps to meet ADA standards
- Add pavement approach slabs to the Fox Lake outlet bridge
- Pavement markings
- City water main and portions of existing sanitary sewer



Traffic impacts

- Road will be closed to through traffic during construction
- Access to businesses and residences will be maintained

Business Coordination

We're In This Together!

- Visit wisconsindot.gov/together
 - Tips, tools and resources
 - Business coordination guide
- Project team is here to help
 - What information would help you...
 - Inform customers about the project?
 - Coordinate with suppliers?
 - Communicate with employees?





Real estate

- Temporary Limited Easement (TLE)
 - Needed to complete construction outside right-of-way (restoring lawns or pavement adjacent to sidewalk and curb ramp work)
- Right-of-way acquisition (Fee)
 - May be needed on a few parcels to better meet ADA curb ramp requirements





Project schedule

- Environmental Document Complete – Summer 2025
- Complete Preliminary Design Report – Summer 2025
- Begin Real Estate Acquisition – Summer 2025
- Final Plans Completed – Fall 2027
- Construction Year – 2028



Project contacts

- Matthew Lamb, P.E. – WisDOT Project Manager
 - Email: Matthew.Lamb@dot.wi.gov
 - Phone: (608) 246-5638
- Hannah Punzel – WisDOT SW Region Communications Manager
 - Email: Hannah.Punzel@dot.wi.gov
 - Phone: (608) 246-7907



Project website

<https://wisconsindot.gov/Pages/projects/by-region/sw/wis33-wis68/default.aspx>

- Wisconsindot.gov
 - Projects and Studies (dropdown)
 - Highway projects and studies
 - Southwest
 - WIS 33 (Forest Street to WIS 68)
 - WIS 68 (WIS 33 to Edgelawn Drive)



Questions?

