



WIS 35 Bridge Reconstruction

Tank Creek & Black River Bridges

Project ID: 7140-00-01 & 02

Public Involvement Meeting
Trempealeau Village Hall

August 19, 2025

Who can I talk to about this project?

Shane Peterson, P.E.

WISDOT Project Leader

Shane.Peterson@dot.wi.gov

608-789-5701

Paul Valenti, P.E.

WISDOT Project Manager

Paul.Valenti@dot.wi.gov

608-785-9053

Randy Byom, P.E.

WISDOT Supervisor

Randy.Byom@dot.wi.gov

608-785-9966

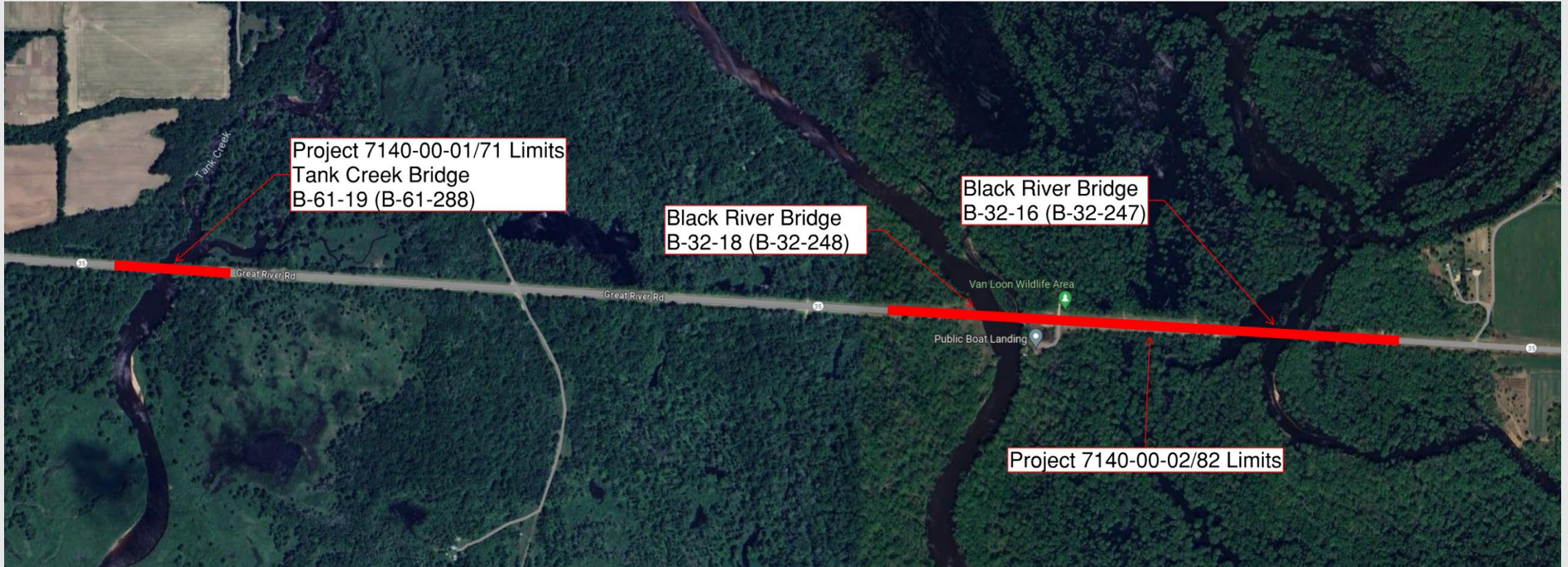


Presentation Agenda

- Project Limits
- Purpose & Need
- Proposed Design
- Alternatives Considered
- Schedule



Project Limits



Why do we need this project?

Safety Concerns

- Structures were built in 1953 (service life of 74 years!)
- Exposed, corroding rebar in the decks, abutments, piers, and wingwalls; rusted guardrail
- Flooding issues; water has topped the bridges in the past



What is our Purpose?

- Keep the traveling public safe by reconstructing these 3 deteriorating structures
- Keep the transportation system operating by reducing the risk of disrupting access
- Minimize impact to wetlands & environmental resources of the Van Loon Wildlife Area & USFWS Refuge



What improvements are proposed?

Proposed Design

- Reconstruct the 3 structures
 - Raise profile of WIS 35 to account for flooding and the size of the new concrete girders
 - Replace asphalt pavement on approaches and between the Black River Bridge structures
 - Replace guardrail & add rip rap along the shores for stabilization
 - New structures would be 40' wide



Design Progress

- Completed

- Survey / Hydraulic Analysis
- Initial coordination letters sent out to public & local officials
- Preliminary roadway & structure design

- Ongoing

- Public Involvement
- Coordination with DNR, USFWS, and State Historic Preservation Office
- Finalize design, environmental document & further investigate options to expedite construction schedule



Alternatives Considered

- Full Closure and Detour
- Maintenance of Traffic
 - Staged Construction
 - Off-Alignment Construction
 - Temporary Structures



Considered Factors for Alternatives

- Permanent and Temporary Wetland impacts / environmentally sensitive areas outside of the existing footprint
- Threatened and endangered species within the Van Loon Wildlife Area
 - Could include up to 15 acres of tree clearing
- Safety concern of adding curves to a previously straight stretch of roadway
- Construction Cost of Structures (permanent and temporary)
 - Increased maintenance cost for larger structures
- Road User Delay
 - Construction Project Duration
 - Individual Trip Delay



Alternative	Construction Cost	Project Duration	Road User Delay	Operational/ Safety Impacts	Environmental Impacts
Closure and Detour	LOW	HIGH	HIGH	LOW	LOWEST
Staged Construction	HIGH	HIGH	LOW	HIGH	LOW
Off-Alignment Construction	HIGH	LOW	LOWEST	HIGHEST	HIGHEST
Temporary Structures	HIGH	HIGH	LOW	MODERATE	HIGH

WisDOT Preferred Alternative

- Construct new structures on current alignment maintaining traffic with temporary structures
 - Maintains traffic with reduced speed limit through work zone; potential for temporary traffic signals
 - Construction of causeway for building bridges
 - Project duration is flexible with maintenance of traffic; up to 2 structures could be built in a season
 - Reduced environmental impact contrasted with off-alignment construction alternative



Schedule

- Finalize environmental document Spring 2026
- Finalize design plans by August 2028
- Scheduled to begin construction in 2029



Thank you for your time!

Please reach out if you have any comments, questions, or concerns!

WisDOT SW Region
3550 Mormon Coulee Road
La Crosse, WI 54601



Detour Route

Existing travel time =
9 minutes

Detour travel time =
19-21 minutes

