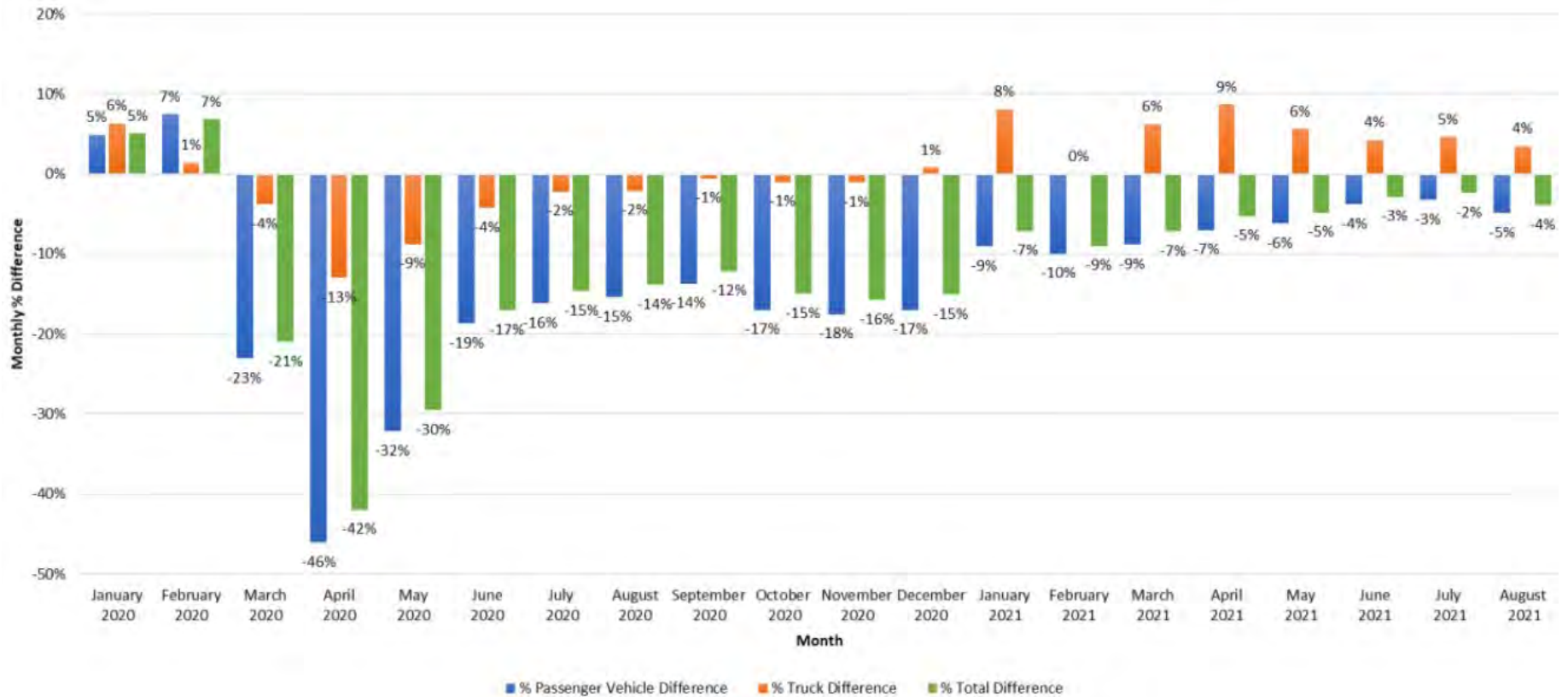




## 2020 & 2021 Traffic Counts in Wisconsin

Traffic count data is used in the VMT estimation process and the COVID-19 pandemic impacted traffic counts in 2020. When compared to 2019, traffic counts increased in early 2020 but began to decrease in March. By April 2020, volumes were down more than 40% from the same period in 2019. Since then, traffic volumes have steadily increased statewide with some areas experiencing higher volumes and some areas experiencing lower volumes compared to the same period in 2019.

Statewide Monthly Average Count Comparison to 2019



Note: Based on select WisDOT count sites that collect data continuously.