

# BICYCLISTS

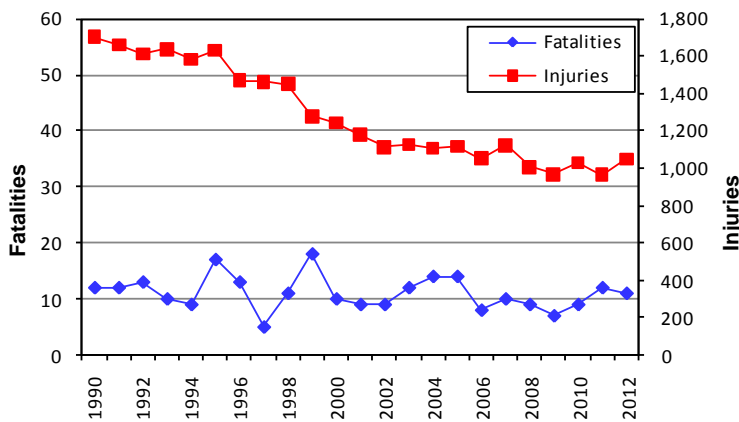


## Did You Know...

**In Wisconsin, in 2012, one bicyclist was injured or killed every 8.3 hours.**

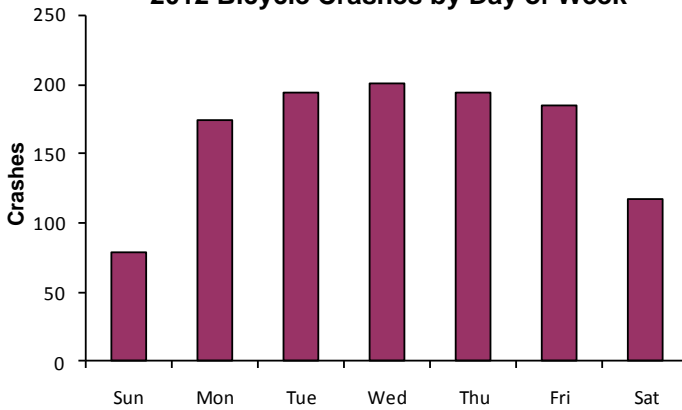
- 1,146 crashes involved bicyclists in Wisconsin in 2012.
- Of these crashes, 11 bicyclists were killed and 1,049 bicyclists were injured.
- The bicyclist is almost always injured in a bicycle/motor vehicle crash.

**Bicyclist Fatalities & Injuries (1990-2012)**



- Over the years, improvements to bicyclist safety have been made in areas such as engineering, education, enforcement, and emergency response.
- The number of bicyclists killed has remained steady for the past 23 years.
- The number of injuries has decreased by 38% since 1990.

**2012 Bicycle Crashes by Day of Week**

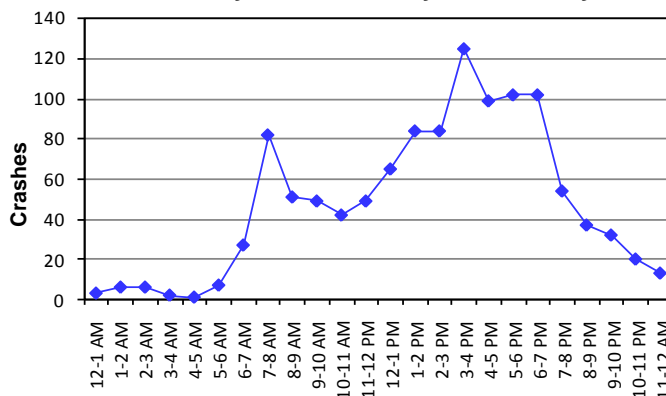


- Bicyclist crashes most often occur on weekdays.

## Types/Factors of Bicycle Crashes

- The most common types of bicycle/motor vehicle crashes involve: motorists failing to yield the right of way to a straight-through bicyclist when they make a left turn; motorist drive out at a sign control; bicyclist riding through a sign control; and motorists turning right on a red.
- **Impaired:** Of the 11 crashes in which a bicyclist was killed, 5 (45%) involved either an impaired bicyclist or motorist.
- Of the 1,045 crashes in which a bicyclist was injured, 29 (3%) involved either an impaired bicyclist or motorist.

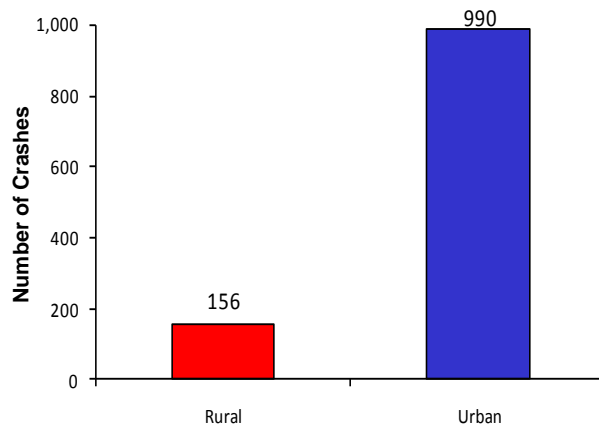
**2012 Bicycle Crashes by Time of Day**



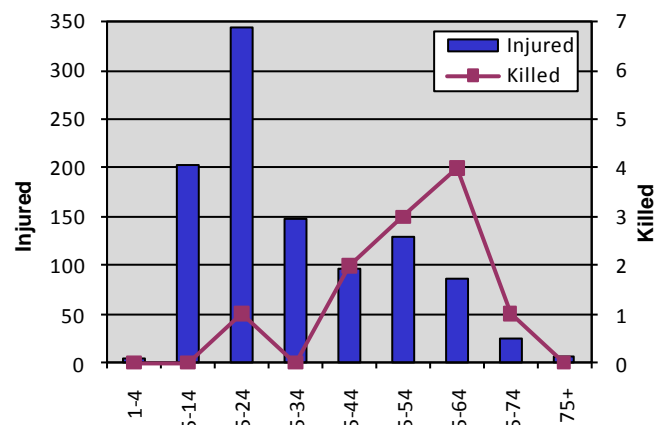
- Most bicyclist crashes occur between 3 and 7 p.m., the hours after school and the prime time that adults commute from work.



**2012 Crashes involving Bicyclists by Location**



**Bicyclists Killed or Injured in 2012**



- Most bicycle crashes occur on local roads and streets.
- This is consistent with the fact that most bicycle travel is in urban areas.
- Children sustain between 1/3 and 1/2 of all bicycle injuries each year. They are involved in crashes caused by darting into traffic and excessive vehicular speeds in neighborhoods and school zones.

## Current Bicycle Laws

Based on Wis. Stats. 340.01(5), 346.02(4)(a) and 346.80(2)(a)

- **Vehicular Status**-The bicycle is defined as a vehicle. The operator of a vehicle is granted the same rights and subject to the same duties as the driver of any other vehicle.
- Any person operating a bicycle at less than normal speed shall ride as close as practicable (not as far right as possible) to the right-hand edge or curb of the unobstructed traveled roadway, including riders who are riding two or more abreast.



## What You Can Do

- **Give the bicycle at least 3 feet of clearance when passing.**
- **Bicyclists passing a parked, stopped, or moving vehicle are also required to give at least 3 feet of clearance.**
- **Be aware that the occupant of a parked vehicle must look before opening their door to ensure it won't interfere with the movement of traffic.**
- **When turning left, watch for and yield to oncoming bicyclists just as you would yield to oncoming motorists.**
- **When turning right, yield to any bicyclist traveling on your right. Do not try to pass a bicyclist if you are planning to turn right at the next intersection or driveway.**
- **Be aware of children riding their bicycles. A child riding in the street may suddenly swerve in front of you or a child on the sidewalk may suddenly ride out in front of you.**
- **Bicyclists must ride on the right, in the same direction as other traffic.**