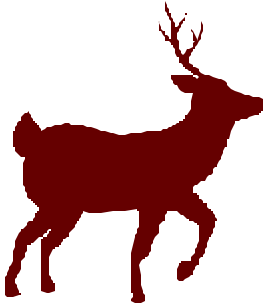


MOTOR VEHICLE-DEER CRASHES IN 2003



Motor vehicle-deer crashes continue to be cause for concern in highway safety. Deer are the third most commonly struck object in Wisconsin (behind striking another vehicle and striking a fixed object). In 2003, 13 people died in 12 fatal, motor vehicle-deer crashes. In 684 injury crashes in which a total of 792 people were hurt: 98 people suffered incapacitating injuries; less serious injuries totaled 337, and 357 people were possibly injured.¹ A recent study by the Wisconsin Department of Transportation made the following discoveries:

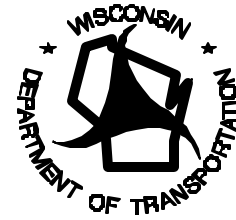
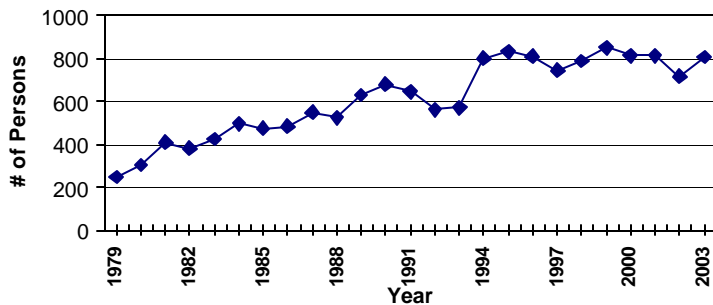


Figure 1:

**Motor Vehicle-Deer Crashes:
Persons Injured or Killed
(1979-2003)**

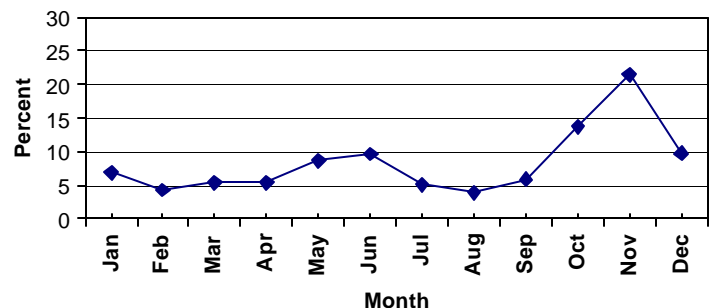


- **While October and November are the peak months, June often accounts for a surprising number of injuries.** In 4 of the last 10 years, June ranked as the worst or second worst month for injuries. In 2003, injuries were the worst in June, with 125 injuries in June compared to 117 in November and 104 in October.
- **Deer crashes follow time of day patterns based on the season.** In 2003, deer crashes from April to August were most likely to occur between 8 p.m. and Midnight; from November to January, they were most common between 5 p.m. and 11 p.m.

- **The number of persons injured or killed in deer crashes has increased over the past 25 years.** Since 1979, there has been a general increase in the number of persons injured or killed in motor vehicle crashes with deer. The 805 people injured or killed in 2003 was 235 more than in 1993 and the sixth highest in 25 years of tracking. 1999 was the highest with 847 (Figure 1).
- **Deer crashes peak in October-November with a secondary peak in May-June.** In 2003, investigating officers reported 21,666 motor vehicle-deer crashes.² Of those, 7,620 (35.2%) occurred in October or November. The secondary peak time of May-June included 3,962 crashes (18.3%) (Figure 2).

Figure 2

Motor Vehicle Crashes by Month (2003)

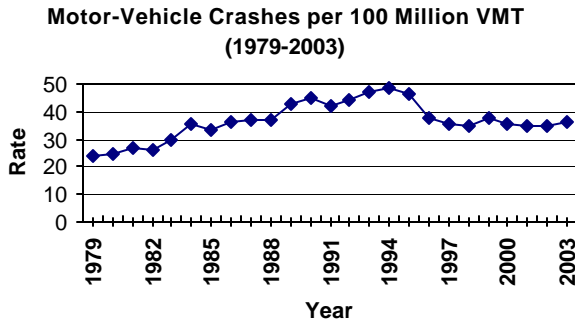


¹ "Possible injury" is defined as any injury that is not evident at the scene but that is claimed by the individual or suspected by the law enforcement officer.

² Effective January 1, 1996, "property damage only" crashes with less than \$1,000 damage need not be reported. Previously, the threshold was \$500. Hence, reported property damage only crashes sustained a substantial drop overall during the past five years.

- **In two Wisconsin counties, motor vehicle-deer crashes outnumbered non-deer crashes.** In Green Lake and Shawano, more than half of all police-reported crashes involved deer in 2003.
- **Dane, Shawano and Waupaca counties had the highest number of reported deer crashes.** Dane County had the most motor vehicle-deer crashes reported in 2003 with 1,135. Shawano followed with 928 and Waupaca with 850.

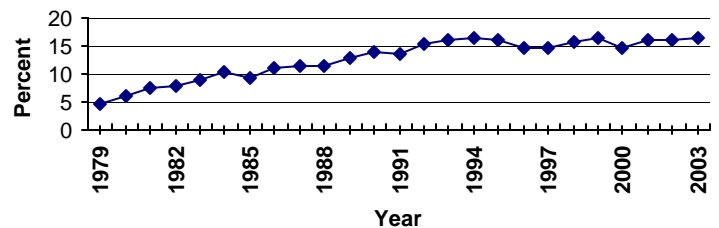
Figure 3



- The number of reported deer crashes per 100 million vehicle miles traveled was on an upward trend from the late 1970s up until 1994. After 1994, the rate declined sharply. Since then, the rates have remained steady, averaging 36 crashes per 100 million VMT over the past six years (Figure 3).

Figure 4

**Deer Crashes as a Percentage of All Motor Vehicle Crashes
(1979-2003)**



- **Deer crashes account for a growing percentage of all reported crashes.** In 1978 and 1979, deer crashes accounted for only 5.1% and 4.7% of all crashes, respectively. By 2003, the percentage had increased to 16.5% (Figure 4).
- **Deer crashes typically occur in rural settings.** In 2003, 20,067 of the 21,666 (92.6%) deer crashes occurred on rural roads.
- **Motorcyclists need to be particularly alert to deer.** In 2003, while only 3.0% of passenger cars and 1.0% of utility trucks involved in deer crashes resulted in a fatality or injury to an occupant, 84.9% of motorcycle-deer crashes resulted in a fatality or injury to a motorcyclist. Eight of the 13 motor vehicle/deer crash fatalities in 2003 were motorcyclists.
- **Another indicator of motor vehicle/deer crashes is the number of deer carcasses removed from Wisconsin's roadway system.** These figures are compiled each fiscal year (July through June) by the Wisconsin Department of Natural Resources. For Fiscal Year 2003, a total of 47,841 carcasses removed. Note that the DNR figure is much higher than the WisDOT figure. This is because the WisDOT figure only includes crashes that were reported by law enforcement officers. For more information on deer carcass figures, please call Brad Koele, WDNR at (608)261-7589 or by email at bradley.koele@dnr.state.wi.us

These statistics are based only on crashes reported to the Wisconsin Department of Transportation by law enforcement officers. Deer crashes self-reported by drivers are *not* included. Also, crashes caused by drivers avoiding deer are *not* included. The information used in this monograph was taken from *The Wisconsin Crash Facts Book* and the Division of Motor Vehicles Accident Database. Questions or comments may be directed to: Wisconsin State Patrol/Bureau of Transportation Safety at (608) 267-5136.