

SPEED

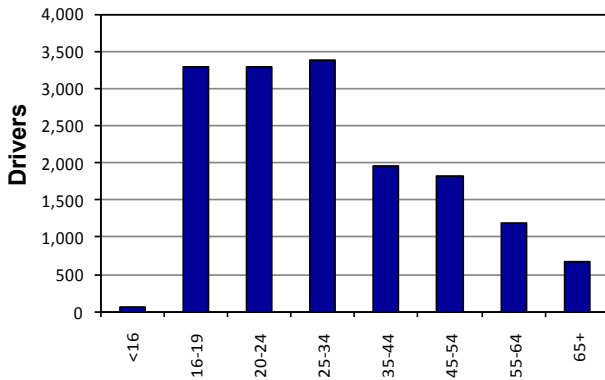


Did You Know...

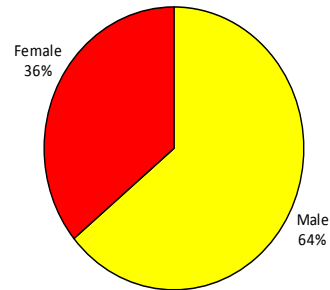
In Wisconsin, in 2012, one person was injured or killed in a speed-related crash every 1.2 hours.

- 16,169 speed-related crashes occurred in Wisconsin in 2012.
- In these crashes, 167 people were killed and 7,063 people were injured.
- Speed was listed as a contributing cause in 15% of all crashes and 27% of all fatal crashes.

2012 Drivers "Driving Too Fast" in Crashes by Age

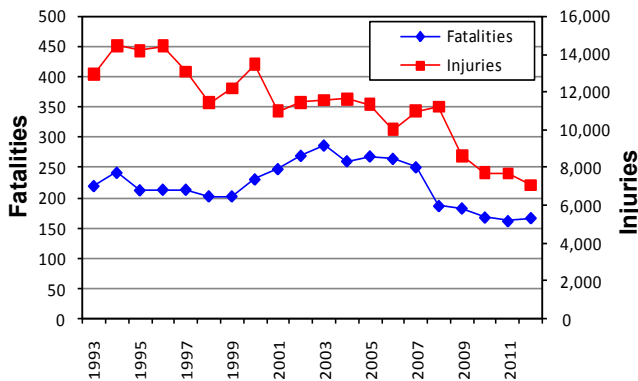


2012 Drivers "Driving Too Fast" in Crashes by Gender

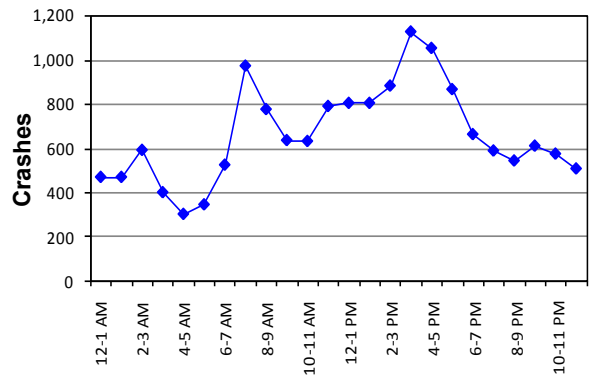


- 16-19 year old males accounted for 12% of the drivers "driving too fast" in crashes.
- This trend was a factor supporting the implementation of Wisconsin's Graduated Driver's License Law (GDL) on February 1, 2000.

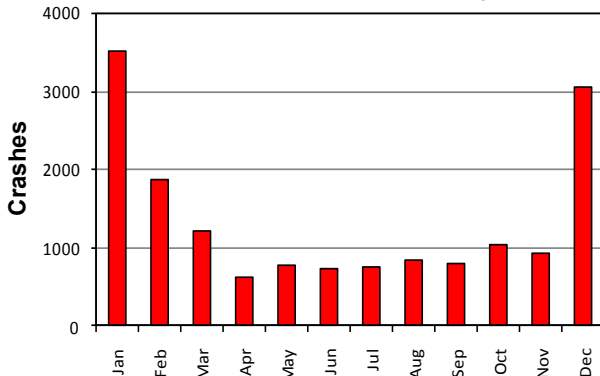
Speed-Related Fatalities & Injuries (1993-2012)



2012 Speed-Related Crashes by Time of Day



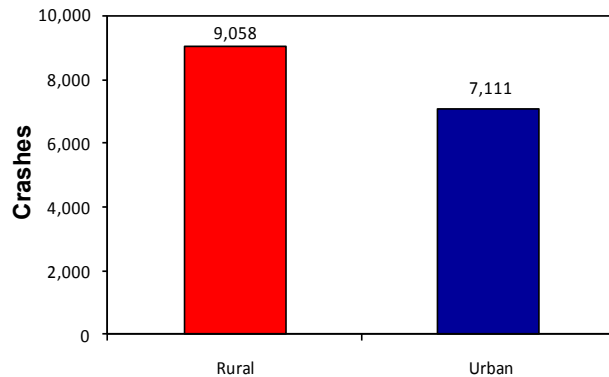
2012 Speed-Related Crashes by Month



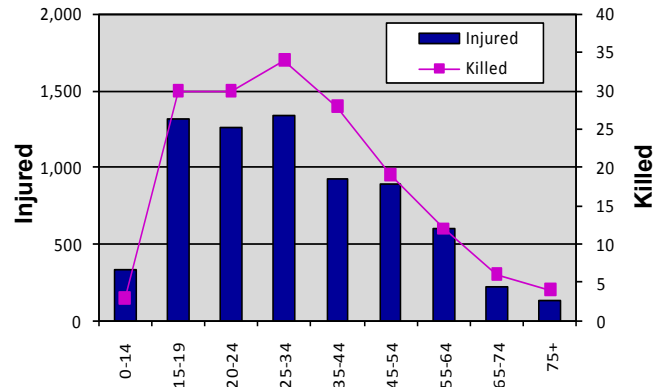
- The peak times for speed-related crashes occur from 7-8 AM and from 3-5 PM.
- Many crashes occur during prime commuter times to and from work and school.
- The varied seasons Wisconsin residents enjoy are echoed by the months the majority of crashes occur.
- Driving too fast for weather conditions was the primary cause of speed-related crashes from December thru February.

Who is at Risk....

2012 Speed-Related Crashes by Location



2012 Injured & Killed by Age in Speed-Related Crashes



- 56% of speed-related crashes occurred in rural locations and 44% occurred in urban locations for 2012.
- Teenagers and young adults sustained between 1/2 and 2/3 of all speed-related injuries and fatalities for 2012.

Current Speed Laws

Wis. Stats. 346.57 (2) and (3) and (4)

- Drivers are required to drive vehicles at a speed that does not exceed the posted limit and is reasonable given conditions of the road. The speed of the vehicle must be controlled to avoid colliding with any object, person or vehicle.
- Situations that may require reduced speeds include approaching intersections, railways, curves, hillcrests, narrow and winding roads, the presence of children or adverse weather.
- Drivers may not drive in excess of the following fixed and posted limits: 15 mph in school zones during school hours, 15 mph in safety zones when pedestrians are present, 15 mph in an alley, 25 mph on highways within corporate city limits unless modified and posted, 35 mph in outlying districts of city limits or semi-urban areas outside of city limits, 45 mph on designated rustic roads, 55 mph in the absence of any other fixed or posted limits and 65 mph on freeways and expressways.



What Can You Do?

- Obey posted speed limits.
- Use caution and reduce travel speeds in unfavorable weather and road conditions and sudden, unexpected situations.
- Be alert when traveling in work zones, school zones and railway grade crossings.
- Obey speed limits and wear safety belts to reduce the risk of being injured or killed in a speed-related crash.

WISCONSIN DEPARTMENT OF TRANSPORTATION/Bureau of Transportation Safety
For more information call (608) 266-0402