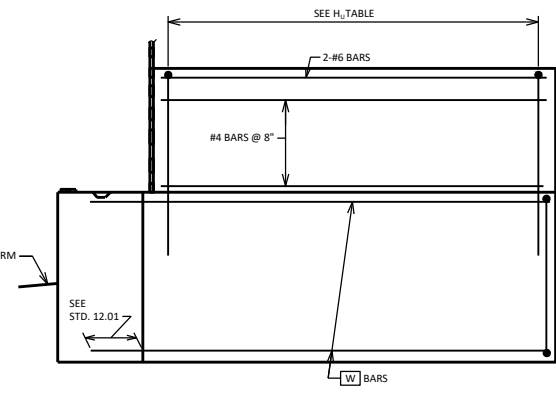
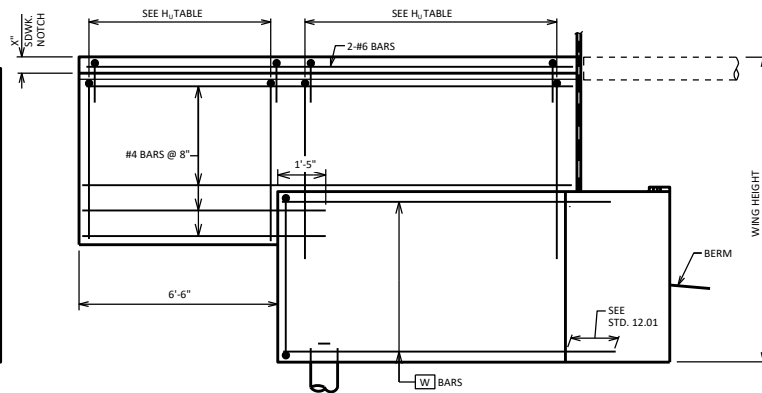


WING WITHOUT PILE ELEVATION
(FRONT FACE)

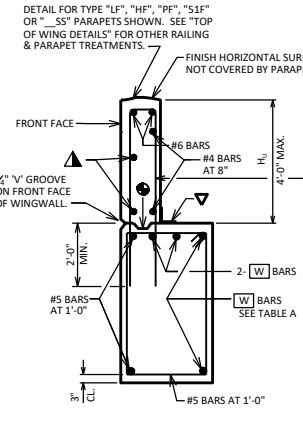
WING WITH PILE ELEVATION
(FRONT FACE)



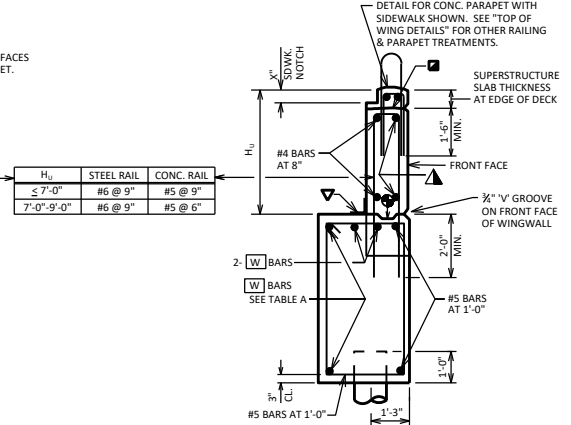
WING WITHOUT PILE ELEVATION
(BACK FACE)



WING WITH PILE ELEVATION
(BACK FACE)



WING WITHOUT PILE SECTION



WING WITH PILE SECTION

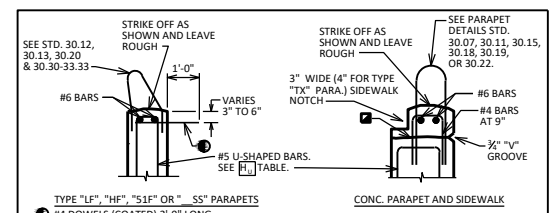
DESIGNER NOTES

- SEE STD. 12.01 FOR ADDITIONAL DESIGNER NOTES.
 - WING WITH PILE & WING WITHOUT PILE CAN BE USED FOR EITHER SIDEWALK OR SLOPED FACE PARAPETS. THE TYPE OF WING TO USE IS BASED ONLY ON THE WING HEIGHT AND WING LENGTH LIMITATIONS SHOWN.
 - NAME PLATE (ONLY FOR TYPE "F", "W" AND "M" OR TIMBER RAIL AS SHOWN ON STANDARD 30.24), LOCATE NAME PLATE ON FIRST RIGHT WING TRAVELING UP STATION.
 - SEAL ALL EXPOSED HORIZONTAL AND VERTICAL SURFACES OF 1/2" FILLER WITH NON-STAINING GRAY NON-BITUMINOUS JOINT SEALER, 1" DEEP AND HOLD 1/2" BELOW SURFACE OF CONCRETE). EXTEND SEALER 3" BELOW GROUND LINE AT INSIDE FACE.
- LRFD DESIGN LOADS**
- LIVE LOAD = 2'-0" SURCHARGE
LOAD FACTORS:
γ_{DC} = 1.25
γ_{HL} = 1.50
γ_{SW} = 1.35
γ_{LS} = 1.75
- EXPOSURE CLASS 2, X_e = 0.75
f_y = 60,000 P.S.I.
f'_c = 3,500 P.S.I.
HORIZ. EARTH LOAD BASED ON:
35 P.C.F. EQUIV. FLUID UNIT WEIGHT OF SOIL

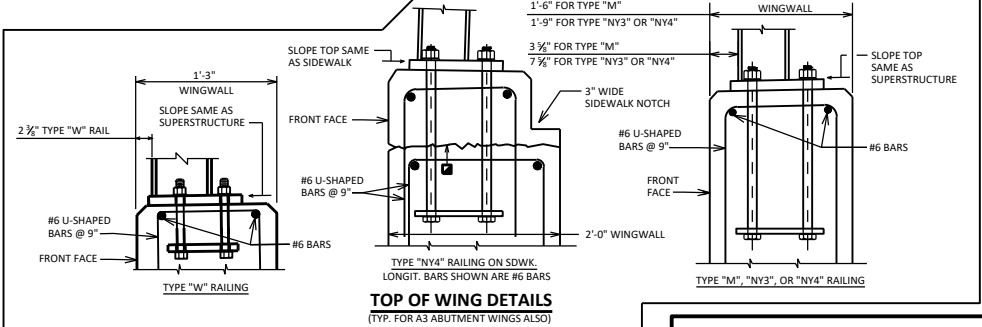
TABLE A

WING LENGTH	WING HEIGHT				BARS
	8'-6"	10'-0"	11'-6"	13'-0"	
10'-0"	#6-#6'S	#6-#6'S	6-#5'S		W
	#7-#8'S	#7-#8'S	6-#5'S		A1
12'-0"	#6-#6'S	#7-#8'S	7-#5'S	7-#6'S	W
	#7-#8'S	#7-#8'S	6-#7'S	7-#7'S	A1
16'-0"	7-#6'S	8-#6'S	7-#7'S	8-#7'S	W
	5-#8'S	6-#8'S	7-#8'S	8-#8'S	A1
20'-0"	7-#7'S	7-#8'S	8-#8'S	8-#9'S	W
	6-#9'S	7-#9'S	7-#10'S	8-#10'S	A1
24'-0"	8-#8'S	9-#8'S	9-#9'S	9-#10'S	W
	7-#9'S	8-#9'S	8-#10'S	9-#10'S	A1

* WING WITHOUT PILE VALUES SHOWN. USE 10'-0" WING HEIGHT VALUES FOR WING HEIGHTS UP TO 10'-8". (FOR WING WITH PILE THAT HAS WING LENGTH IN THIS REGION, USE VALUES FOR 11'-6" WING HEIGHT)



TOP OF WING DETAILS
(TYP. FOR A3 ABUTMENT WINGS ALSO)



- CONSTRUCTION JOINT, LEAVE ROUGH. REQUIRED FOR PRESTRESSED CONCRETE SUPERSTRUCTURES. OPTIONAL FOR OTHERS. POUR CONCRETE ABOVE THIS JOINT AFTER DECK IS IN PLACE. IF JOINT IS USED, UTILIZE RUBBERIZED MEMBRANE WATERPROOFING (COST INCIDENTAL TO BID ITEM "CONCRETE MASONRY BRIDGES").
- USE #4 BARS @ 1'-0"
- OPTIONAL CONST. JOINT FORMED BY BEVELED 2" X 6" KEYWAY WITH MEMBRANE ON BACKFACE.
- 18" RUBBERIZED MEMBRANE WATERPROOFING. SEAL ALL HORIZONTAL AND VERTICAL JOINTS ON BACKFACE.

ABUTMENT TYPE A1

BUREAU OF STRUCTURES

APPROVED: *Laura Shadewald*

DATE: 7-23