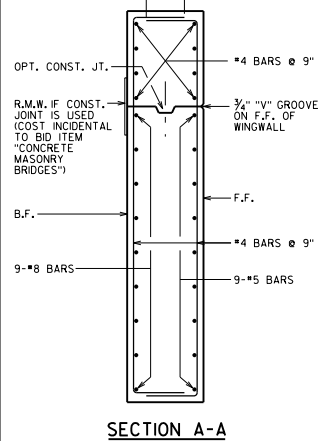
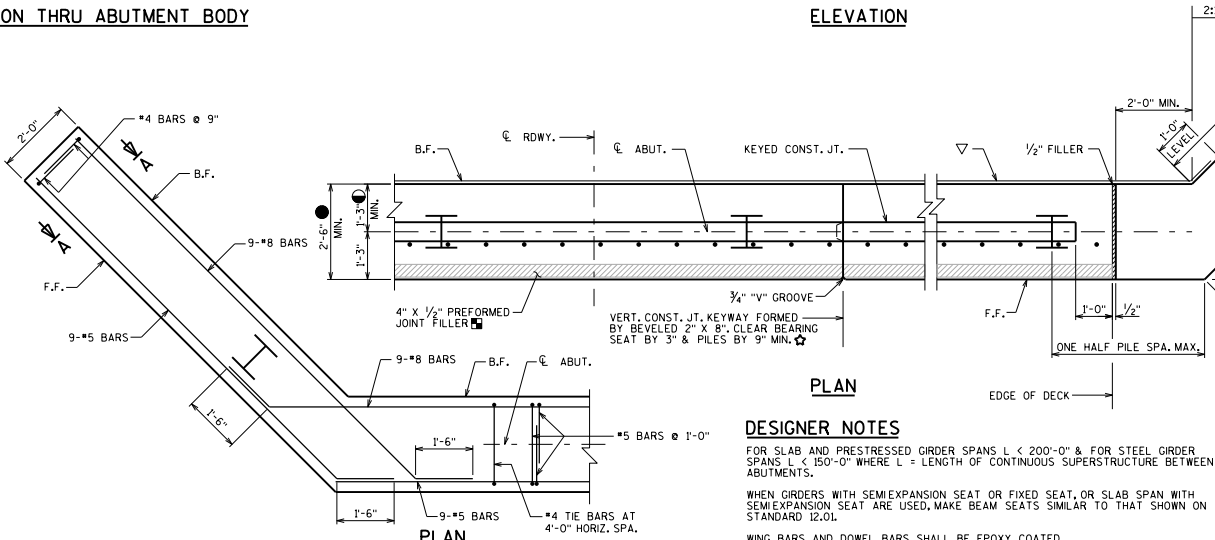


**TYP. SECTION THRU ABUTMENT BODY**



**PLAN**



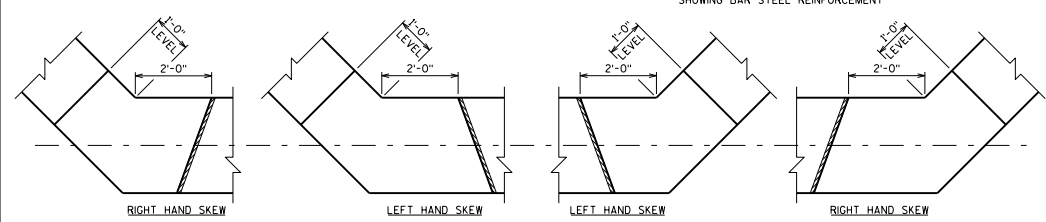
**NOTES/LEGEND**

- DO NOT PLACE FILL ABOVE 3'-0" FROM BOTTOM OF ABUTMENT UNTIL SUPERSTRUCTURE IS IN PLACE.
- SEAL ALL EXPOSED HORIZ. & VERT. SURFACES OF 1/2" FILLER WITH NON-STAINING GRAY NON-BITUMINOUS JOINT SEALER. 1" DEEP AND HOLD 1/8" BELOW SURFACE OF CONC.)
- 18" RUBBERIZED MEMBRANE WATERPROOFING.
- WHEN ABUTMENT WIDTH > 2'-10" FIXED POINT OF WING ROTATION SHALL BE ON F.F. OF ABUTMENT 10° SKEW ONLY.
- THESE BARS MAY BE PLACED AFTER CONCRETE IS POURED, BUT BEFORE INITIAL SET HAS TAKEN PLACE. SEE STD. 12.01 & 27.05
- ALTERNATE THE POSITION OF THE 90° AND 180° HOOKS AT EACH VERTICAL LAYER OF TIES.

**DESIGNER NOTES**

- FOR SLAB AND PRESTRESSED GIRDER SPANS L < 200'-0" & FOR STEEL GIRDER SPANS L < 150'-0" WHERE L = LENGTH OF CONTINUOUS SUPERSTRUCTURE BETWEEN ABUTMENTS.
- WHEN GIRDERS WITH SEMIEXPANSION SEAT OR FIXED SEAT, OR SLAB SPAN WITH SEMIEXPANSION SEAT ARE USED, MAKE BEAM SEATS SIMILAR TO THAT SHOWN ON STANDARD 12.01.
- WING BARS AND DOWEL BARS SHALL BE EPOXY COATED.
- WHEN BODY SECTION IS > ± 50'-0" LONG, PROVIDE VERT. CONST. JOINT, RUN BAR STEEL THRU JOINT, BEVEL EXPOSED EDGES 3/4" AND SEAL JOINT, SEE STD. 12.09 FOR ALTERNATE CONSTRUCTION JOINT.
- USE 1'-3" FOR SLAB SPANS AND FOR GIRDER SPANS WITH NO PAVING NOTCH, BUT WHERE 36", 45", 54", 54W", 70", 72W" OR 82W" GIRDERS ARE USED, AND SKEW > 25°.
- USE 1'-3" FOR SLAB SPANS WITH A PAVING NOTCH, BUT NO STRUCTURAL APPROACH SLAB.
- USE 1'-11" FOR GIRDER SPANS WITH A PAVING NOTCH, BUT NO STRUCTURAL APPROACH SLAB.
- USE 1'-7" FOR SLAB SPANS WITH A STRUCTURAL APPROACH SLAB. (STD. 12.10)
- USE 2'-3" FOR GIRDER SPANS WITH A STRUCTURAL APPROACH SLAB. (STD. 12.10)
- FOR BOTTOM OF ABUTMENTS LOCATED ABOVE NORMAL WATER, PLACE UNDERDRAIN NEAR THE BOTTOM OF ABUTMENT AS SHOWN IN STANDARD 12.01 FOR BOTTOM OF ABUTMENTS LOCATED BELOW NORMAL WATER, PLACE UNDERDRAIN ABOVE NORMAL WATER. SEE BRIDGE MANUAL 12.6.1 FOR ADDITIONAL GUIDANCE. FOR UNDERDRAIN EXPOSED TO HIGH WATER, CONSIDER CAPPING THE UPSTREAM END TO PREVENT CLOGGING.
- USE 3/4" THICK FILLER FOR SLAB STRUCTURES

**WING DETAIL FOR SKEWED STRUCTURES**



**ABUTMENT A5 (INTEGRAL, PILE ENCASED ABUTMENT)**

**BUREAU OF STRUCTURES**

DATE: 1-22

APPROVED: Bill Oliva