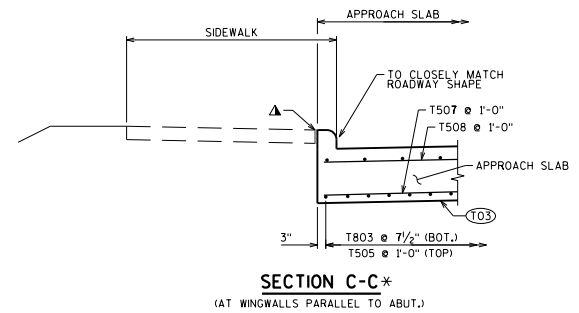
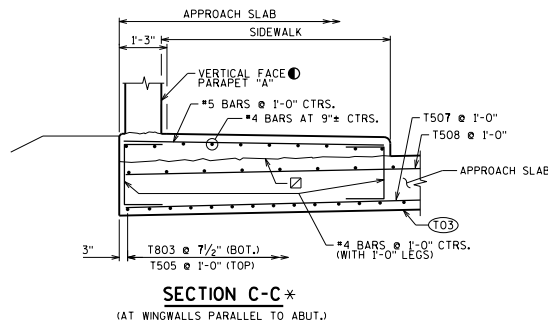
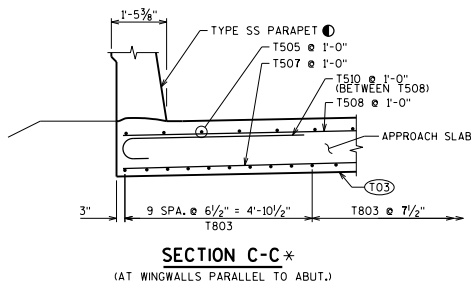
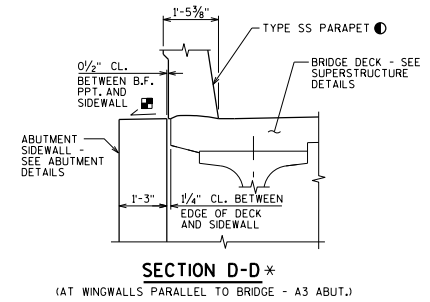
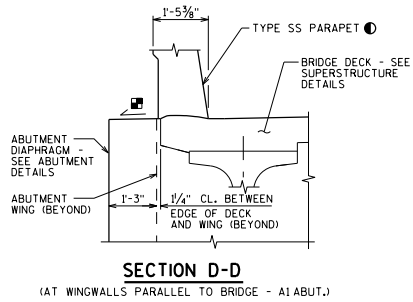
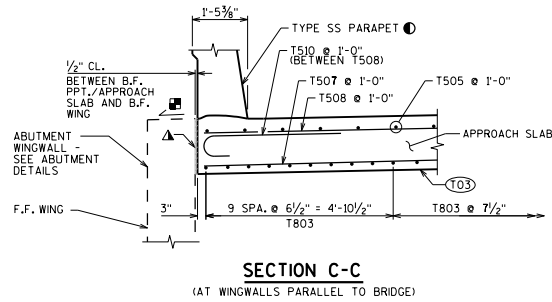


LEGEND

- (T02) STEEL TROWEL TOP SURFACE OF FOOTING AND PLACE MULTIPLE LAYERS (0.03" MIN. TOTAL THK.) OF POLYETHYLENE SHEETS OVER THE ENTIRE TOP OF FOOTING.
- (T03) PLACE MULTIPLE LAYERS (0.03" MIN. TOTAL THK.) OF POLYETHYLENE SHEETS OVER THE ENTIRE TOP OF SUBGRADE BENEATH SLAB.
- ▲ SEAL ALL EXPOSED HORIZONTAL AND VERTICAL SURFACES OF 1/2" FILLER WITH NON-STAINING GRAY NON-BITUMINOUS JOINT SEALER. (1" DEEP AND HOLD 1/2" BELOW SURFACE OF CONCRETE).
- SEE PARAPET STANDARD DETAILS FOR REINFORCEMENT, LOCATION OF NAME PLATE AND BENCH MARK WITH RESPECT TO THE END OF PARAPET, ETC.
- ☒ CONST. JOINT-STRIKE OFF AS SHOWN AND LEAVE ROUGH FOR DECK POUR MATCH BRIDGE X-SLOPE.
- ▣ SLOPE TO DRAIN
- * SECTION REPRESENTATIVE OF SIMILAR LOCATION AS SHOWN ON STANDARD 12.10 FOR DIFFERENT APPLICATION.



**STRUCTURAL APPROACH
SLAB DETAILS I**

**BUREAU OF
STRUCTURES**

APPROVED: Bill Oliva DATE: 1-20

SECTIONS A-A THRU G-G ARE FROM STANDARD 12.10