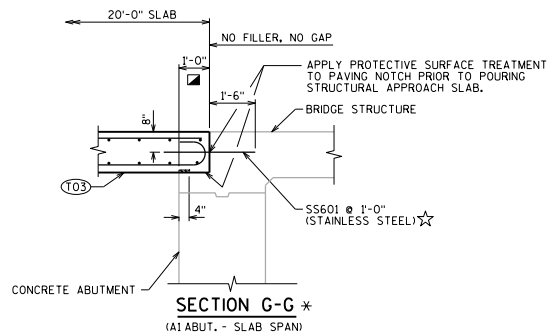
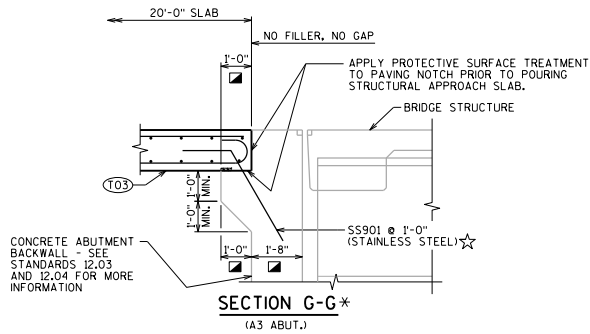
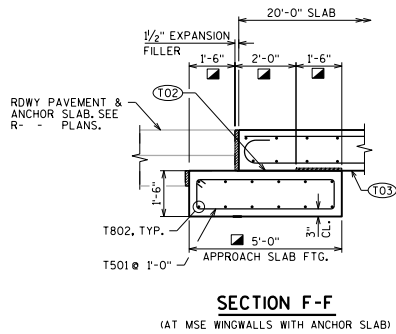
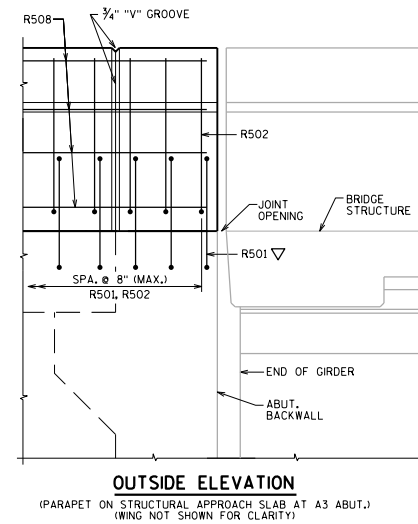
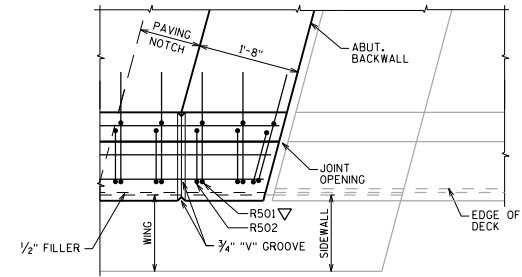


SECTION THRU APPROACH SLAB




**LEGEND**

- (T02) STEEL TROWEL TOP SURFACE OF FOOTING AND PLACE MULTIPLE LAYERS (0.03" MIN. TOTAL THK.) OF POLYETHYLENE SHEETS OVER THE ENTIRE TOP OF FOOTING.
- (T03) PLACE MULTIPLE LAYERS (0.03" MIN. TOTAL THK.) OF POLYETHYLENE SHEETS OVER THE ENTIRE TOP OF SUBGRADE BENEATH SLAB.
- MEASURED NORMAL TO ABUTMENT
- FOLLOW FDM 14-10-25 REQUIREMENTS FOR ROADWAY APPROACH PAVEMENT.
- \* SECTION REPRESENTATIVE OF SIMILAR LOCATION AS SHOWN ON STANDARD 12.10 FOR DIFFERENT APPLICATION.
- ☆ THE BID ITEM FOR SS901 AND SS601 BARS SHALL BE STANDARD SPECIAL PROVISION "BAR STEEL REINFORCEMENT HS STAINLESS STRUCTURES".
- ▽ R501 BARS TO BE TIED TO STRUCTURAL APPROACH SLAB STEEL AND ABUT. STEEL BEFORE STRUCTURAL APPROACH SLAB IS POURED.



**DESIGNER NOTES**

SEE CHAPTER 30 FOR PARAPETS ON STRUCTURAL APPROACH SLAB DETAILS.  
 SECTIONS A-A THRU G-G ARE FROM STANDARD 12.10

<b>STRUCTURAL APPROACH SLAB DETAILS 2</b>	
	<b>BUREAU OF STRUCTURES</b>
APPROVED: <u>Bill Oliva</u>	DATE: 7-19