

### DESIGNER NOTES

PROVIDE 4" MIN. CLEAR BETWEEN ANCHOR BOLTS AND REINFORCEMENT.

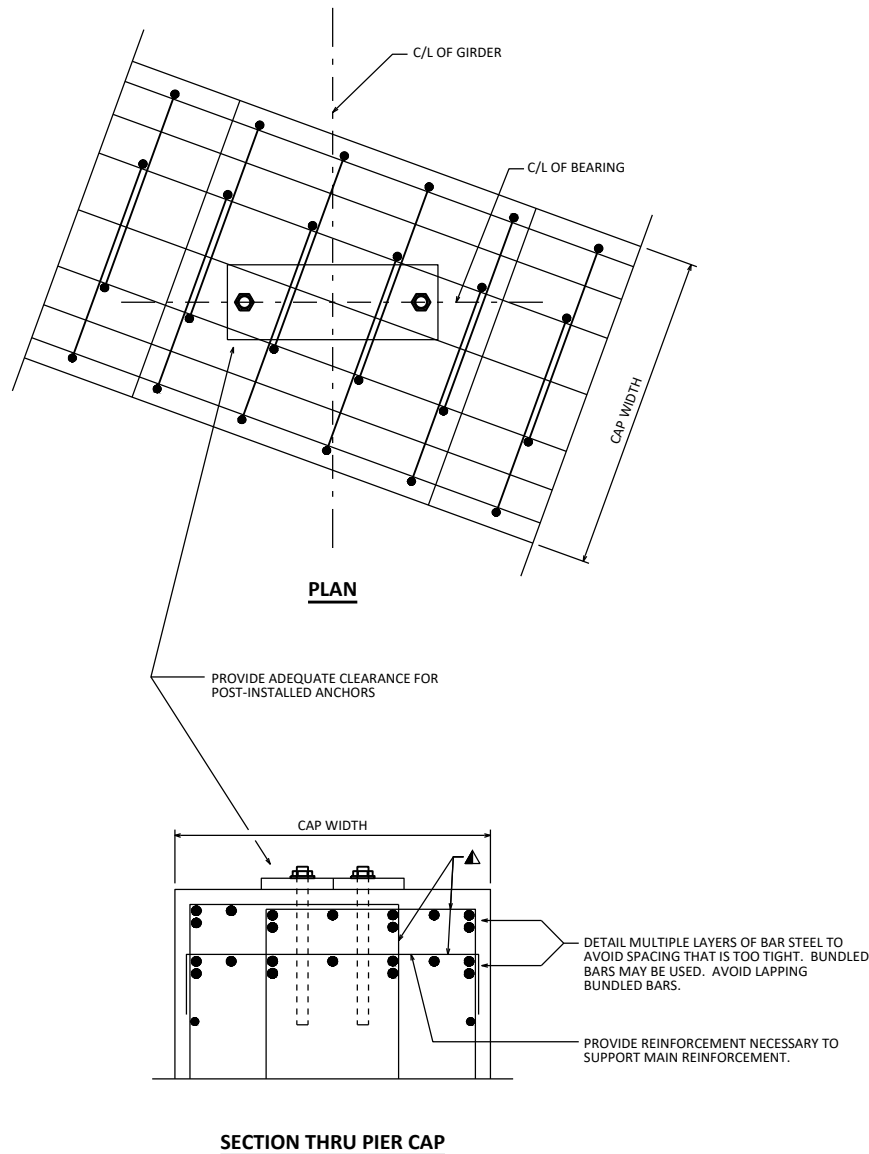
FOR PIER CAPS UP TO 3'-6" WIDE, PROVIDE AT LEAST ONE 5" MIN. CLEARANCE BETWEEN REINFORCING BARS FOR CONCRETE PLACEMENT BY TREMIE AND FOR VIBRATION. FOR CAPS GREATER THAN 3'-6" WIDE, PROVIDE AT LEAST TWO SUCH GAPS.

SHOW ANCHORS LOCATIONS ON PIER CAP SHEETS.

ABUTMENT REINFORCEMENT LAYOUT SIMILAR TO PIER CAP REINFORCEMENT DETAILING.

### NOTE

▲ DISPLACE TRANSVERSE STIRRUP BARS AS NEEDED TO PROVIDE 4" MIN. CLEAR BETWEEN ANCHOR BOLTS AND REINFORCEMENT.



### PIER CAP REINFORCEMENT DETAILING



APPROVED: *Laura Shadewald*

DATE:  
1-17