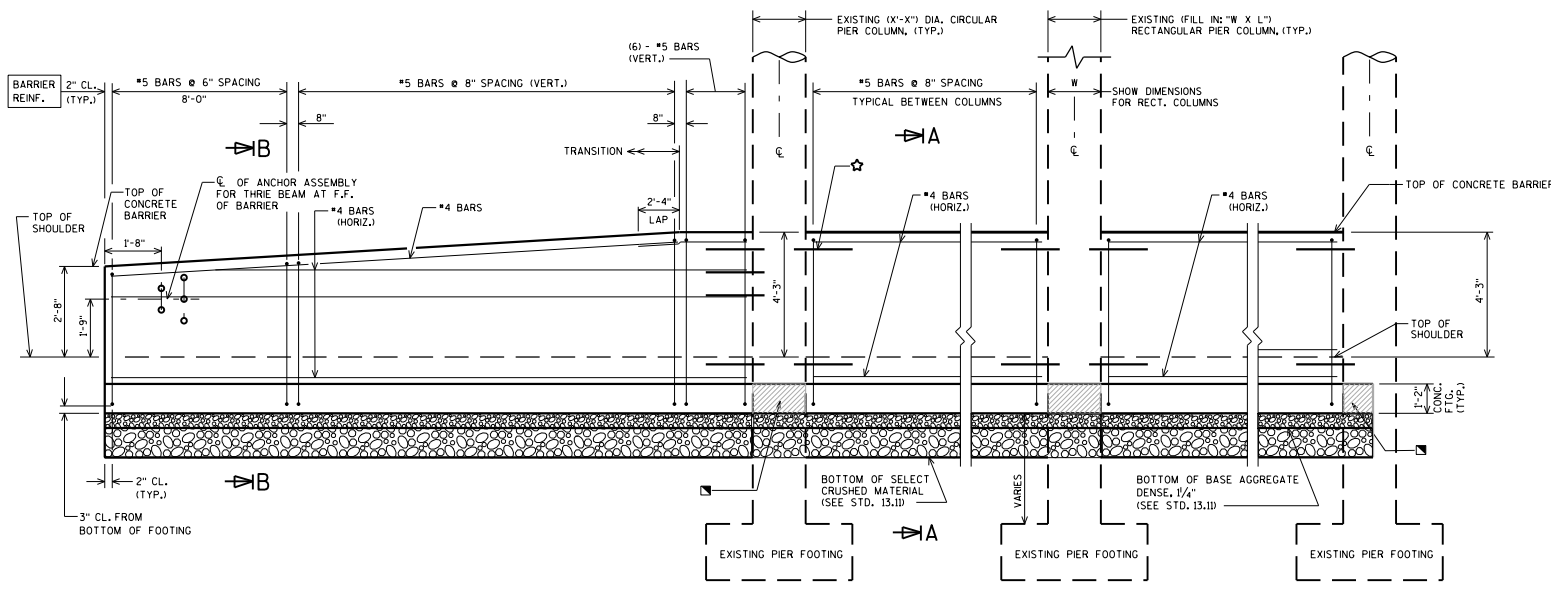


**PLAN**  
DETAILS FOR CIRCULAR AND RECTANGULAR COLUMNS

OPTIONAL CONSTRUCTION JOINTS IN FOOTINGS PLACED ALONG C.C. OF COLUMN. IF USED, LAP LONGITUDINAL REINFORCEMENT 2'-7" IN ADJACENT POUR.

**NOTES**

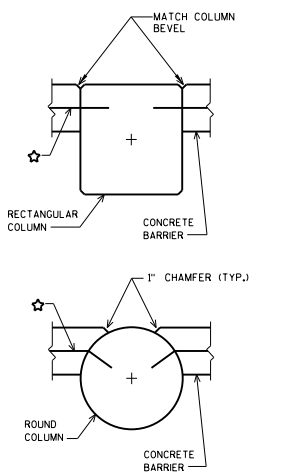
- DETAILS OF CONSTRUCTION MATERIALS AND WORKMANSHIP NOT SHOWN ON THIS DRAWING SHALL CONFORM TO THE PERTINENT REQUIREMENTS OF THE STANDARD SPECIFICATION AND THE APPLICABLE SPECIAL PROVISIONS.
- BARRIER AND FOOTING SHALL CONSIST OF CAST IN PLACE CONSTRUCTION. NO JOINTS SHALL BE ALLOWED IN THE BARRIER. CONSTRUCTION JOINTS WILL ONLY BE ALLOWED IN THE FOOTING AT LOCATIONS SHOWN IN THE "PLAN VIEW".
- DO NOT CUT OR DRILL INTO EXISTING COLUMN BAR STEEL. ALL REINFORCEMENT SHALL BE EPOXY-COATED.
- USE 2-INCH MINIMUM BAR CLEARANCE, EXCEPT AT FOOTINGS. PROVIDE 3-INCH BAR CLEARANCE FROM BOTTOM OF FOOTING TO BOTTOM TRANSVERSE REINFORCEMENT.
- PLACE REINFORCEMENT SUCH THAT IT WILL NOT CONFLICT WITH THE ANCHOR ASSEMBLY FOR THRIE BEAM ATTACHMENT.
- PROVIDE 3/4-INCH BEVEL OR 1-INCH RADIUS ON BARRIER EDGES, TOP AND ENDS.
- SEE STANDARD 13.11 FOR ADDITIONAL DETAILS.
- SEE STANDARD 13.11 FOR DESIGNER NOTES.



**ELEVATION**  
LOOKING AT B.F. OF BARRIER

**ULTIMATE DESIGN STRESSES:**  
 CONCRETE MASONRY —  $f_c = 4,000$  P.S.I.  
 HIGH-STRENGTH BAR STEEL  
 REINFORCEMENT, GRADE 60 —  $f_y = 60,000$  P.S.I.

PLACE 1/2" FILLER BETWEEN COLUMN AND CONCRETE FOOTING (TYP.)



**DETAIL A**

F.F. OF BARRIER IS FLUSH WITH FACE OF COLUMN

NOTE: 51-INCH BARRIER REFERS TO THE DISTANCE FROM THE TOP OF THE SHOULDER TO THE TOP OF THE BARRIER.

**51-INCH CONCRETE INTEGRAL BARRIER**

 <b>BUREAU OF STRUCTURES</b>	DATE:
	APPROVED: <u>Bill Oliva</u> 1-21