

DESIGNER NOTES

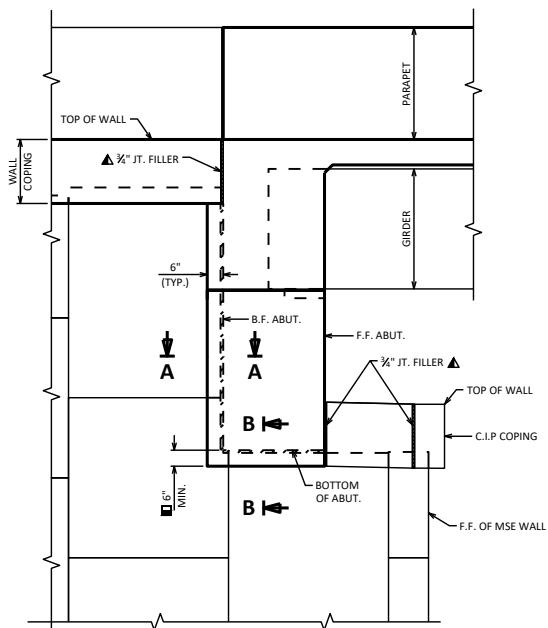
THIS STANDARD IS FOR INFORMATIONAL PURPOSES ONLY. MODIFY DETAILS TO THE PROJECT-SPECIFIC REQUIREMENTS.

6-INCH MINIMUM ASSUMES NO LONG-TERM DIFFERENTIAL SETTLEMENT BETWEEN THE ABUTMENT AND MSE WALL.

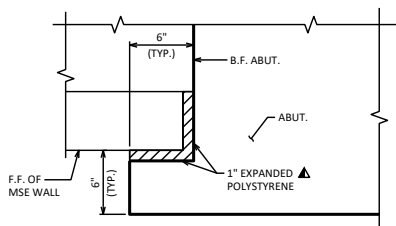
SEE STANDARD 14.04 FOR ADDITIONAL INFORMATION.

NOTES

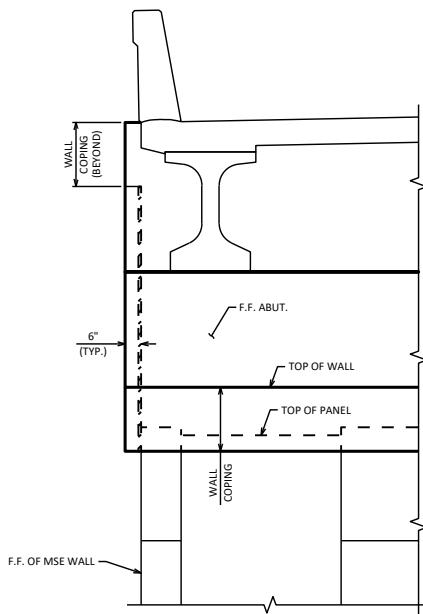
SEAL ALL EXPOSED HORIZONTAL AND VERTICAL SURFACES OF FILLER WITH NON-STAINING GRAY, NON-BITUMINOUS JOINT SEALER. (1" DEEP AND HOLD 1/2" BELOW SURFACE OF CONCRETE).



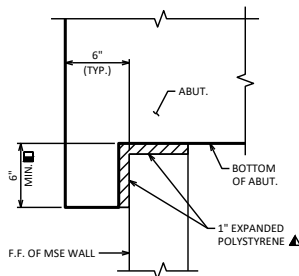
ALTERNATE MSE WALL AT ABUTMENT WITH WRAPPED MSE WALL



SECTION A-A



FRONT ELEVATION OF ALTERNATE MSE WALL AT ABUTMENT WITH WRAPPED MSE WALL



SECTION B-B

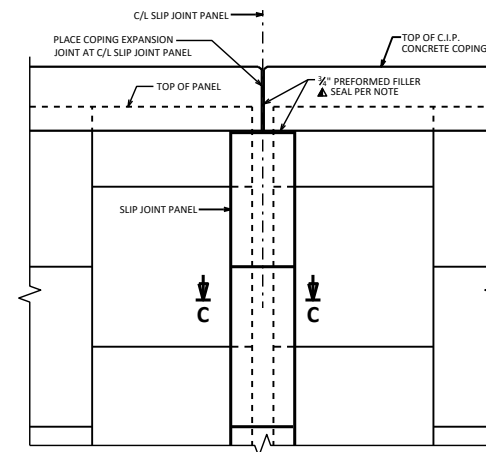
DESIGNER NOTES

SEE STANDARD 14.02 FOR C.I.P. CONCRETE COPING DETAILS.

WHEN REQUIRED FOR STAGING OR BY DESIGN, PROVIDE SLIP JOINT LOCATIONS ON THE PLANS AND PROVIDE COPING NOTES AND DETAILS TO ACCOMMODATE A SLIP JOINT. DO NOT RUN BAR STEEL THRU COPING EXPANSION JOINT.

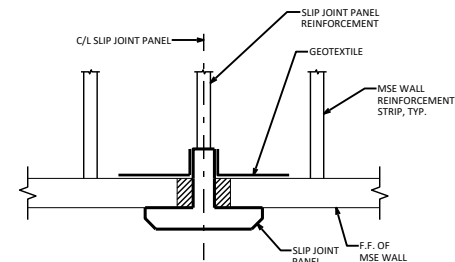
NOTES

SEAL ALL EXPOSED HORIZONTAL AND VERTICAL SURFACES OF FILLER WITH NON-STAINING GRAY, NON-BITUMINOUS JOINT SEALER. (1" DEEP AND HOLD 1/2" BELOW SURFACE OF CONCRETE).



C.I.P. CONCRETE COPING PARTIAL ELEVATION AT SLIP JOINT

DO NOT RUN BAR STEEL THRU COPING EXPANSION JOINT (RAILING NOT SHOWN FOR CLARITY)



SECTION C-C

SLIP JOINT DETAIL SHOWN FOR INFORMATIONAL PURPOSES ONLY. WALL SUPPLIER TO SUBMIT JOINT DETAIL FOR ACCEPTANCE.

MSE WALL DETAILS



APPROVED: *Laura Shadewald*

DATE: 7-24