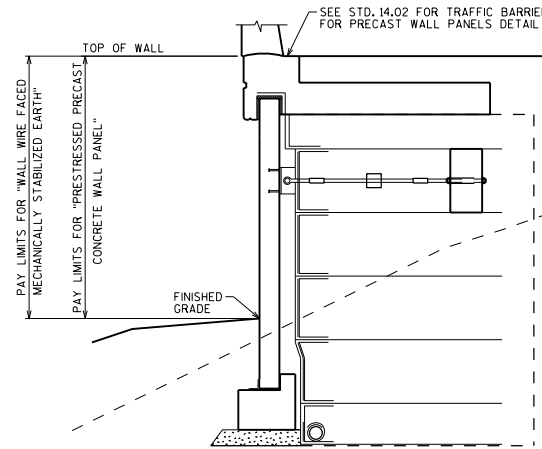


TYPICAL WALL SECTION WITH CAST-IN-PLACE CONCRETE COPING



TYPICAL WALL SECTION WITH CAST-IN-PLACE CONCRETE COPING

SEE TYPICAL WALL SECTION WITH CAST-IN-PLACE CONCRETE COPING DETAIL FOR ADDITIONAL INFORMATION

MATERIAL PROPERTIES

CONCRETE MASONRY RETAINING WALLS	$f'_c = 3,500$ PSI
PRESTRESSED PRECAST CONCRETE WALL PANEL	$f'_c = 5,000$ PSI
BAR STEEL REINFORCEMENT GRADE 60	$f_y = 60,000$ PSI
STRUCTURAL CARBON STEEL - ASTM A36	$f_y = 36,000$ PSI

NOTES

CLEVIS, CLEVIS PIN, COUPLER, MULTIDIRECTIONAL CONNECTOR, AND TURNBUCKLE TO BE CORROSION RESISTANT AND DEVELOP 125% OF THE ULTIMATE STRENGTH OF THE 1/2" DIAMETER ROD.

ST6X25, ROD, CONNECTING HARDWARE, AND DEADMAN ANCHOR INCLUDING ALL ASSOCIATED REINFORCEMENT ARE INCLUDED IN THE BID ITEM "PRESTRESSED PRECAST CONCRETE WALL PANEL".

FORCES APPLIED TO THE DEADMAN ANCHOR MUST BE ACCOUNTED FOR IN THE DESIGN OF MSE REINFORCEMENT WHEN SATISFYING FORCE AND MOMENT EQUILIBRIUM.

DESIGNER NOTES

⊗ SHOW BAR SIZE AND SPACING ONLY, DO NOT PROVIDE BILL OF BARS. BAR STEEL REINFORCEMENT AND CONCRETE INCLUDED IN BID ITEM "PRESTRESSED PRECAST CONCRETE WALL PANEL".

△ WALL PANEL HEIGHT IS DEFINED AS THE LENGTH FROM THE TOP OF THE WALL PANEL TO THE TOP OF THE CONCRETE FOOTING. THE MAXIMUM ALLOWABLE WALL PANEL HEIGHT IS 30'.

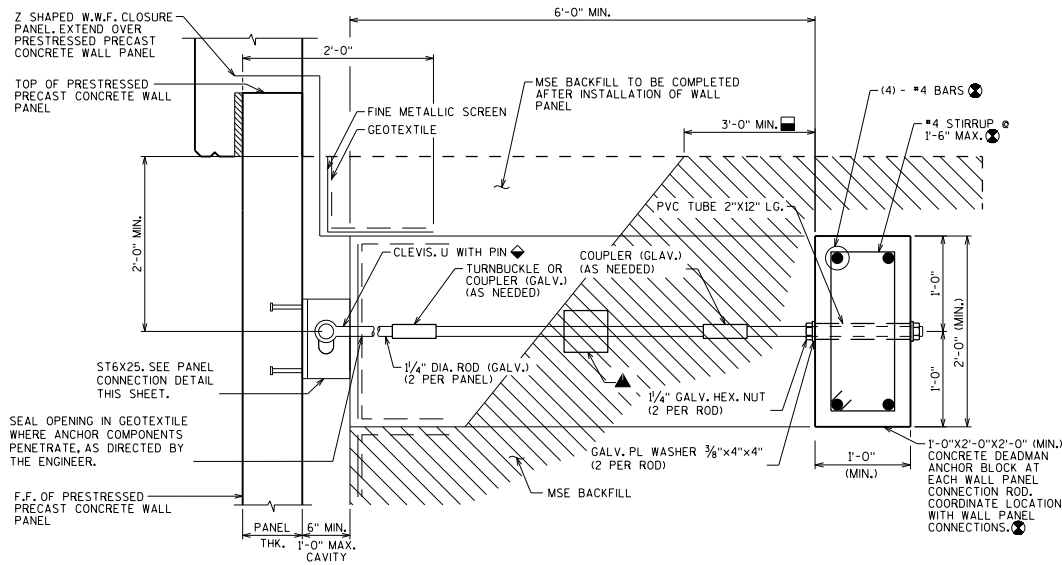
LEGEND

▣ CONTRACTOR TO DESIGN LENGTH TO PROVIDE REQUIRED HORIZONTAL CAPACITY OF ANCHOR ASSEMBLY, MINIMUM OF 3'-0" OF COMPACTED FILL IN FRONT OF DEADMAN ANCHOR PRIOR TO WALL PANEL ERECTION. 1/2" ROD TO BE 2'-0" MIN. BELOW TOP OF REINFORCED SOIL ZONE.

◆ CLEVIS TO BE INSTALLED TOWARDS THE TOP OF THE SLOTTED HOLE, TO ALLOW FOR SETTLEMENT OF THE WIRE FACED MSE WALL.

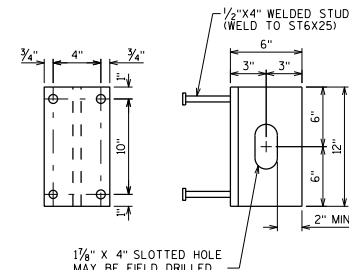
▲ OPTIONAL MULTIDIRECTIONAL CONNECTOR MAY BE USED TO FACILITATE ALIGNMENT AT THE CONNECTION.

● INCLUDES CONCRETE FOR COPING, FOOTING, AND DEADMAN ANCHOR.



WALL PANEL ANCHOR DETAIL

CAST-IN-PLACE CONCRETE COPING SHOWN
CAST-IN-PLACE CONCRETE TRAFFIC BARRIER SIMILAR



PANEL CONNECTION DETAIL

AS AN ALTERNATIVE, 1/2" (GALV.) ADHESIVE ANCHORS MAY BE USED TO AVOID AN OBSTRUCTION. ALTERNATIVE SHALL BE LIMITED TO ONE PANEL CONNECTION PER PANEL.

ST6X25 MAY BE WELDED TO 3/4" THICK PLATE WITH (4)-1/2"x4" STUDS ANCHORED IN PRECAST CONCRETE PANEL. RESTORE ZINC COATING AROUND ANY WELDED AREAS. SUBMIT DETAILS FOR APPROVAL BY THE ENGINEER.

MSE WALL WIRE FACING 1	
	BUREAU OF STRUCTURES
APPROVED: <u>Bill Oliva</u>	DATE: 1-19