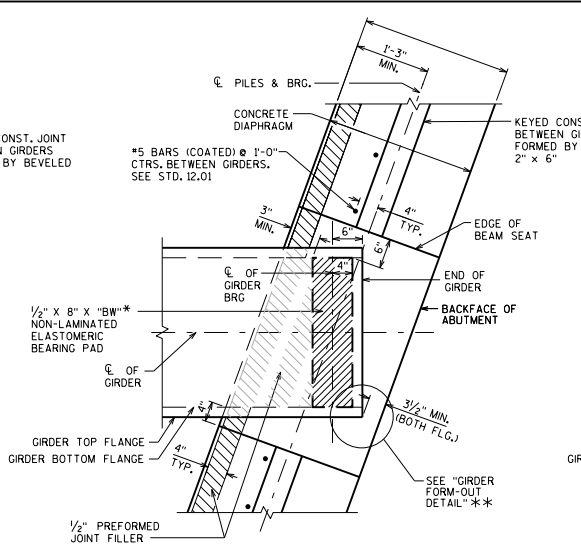
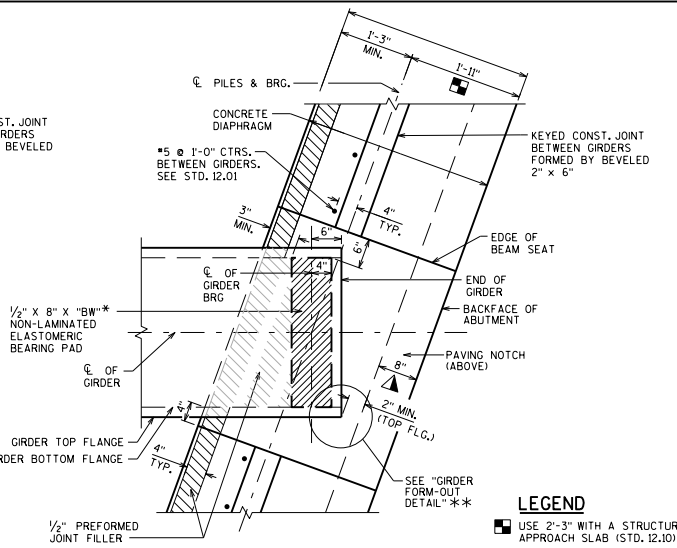


**AT PIER**



**AT ABUTMENT**

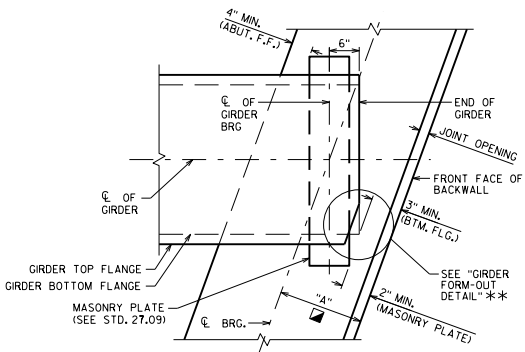
ABUTMENT: TYPE "A1 FIXED" AND "A5" W/O PAVING NOTCH



**AT ABUTMENT**

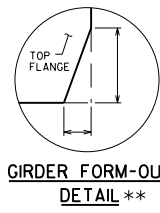
ABUTMENT: TYPE "A1 FIXED" AND "A5" WITH PAVING NOTCH.

- LEGEND**
- USE 2'-3" WITH A STRUCTURAL APPROACH SLAB (STD. 12.10)
  - ▲ PAVING NOTCH IS 1'-0" WIDE IF STRUCTURAL APPROACH SLAB (STD. 12.10) IS USED.
  - 1'-6" FOR 36W", 45W", 54", 54W", 70", 72W" & 82W" GIRDERS WITH SKEWS >25°.

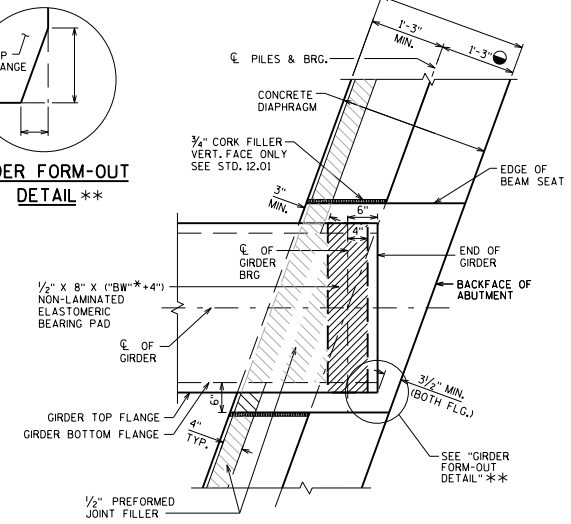


**AT ABUTMENT WITH STEEL BRGS**

ABUTMENT: TYPE "A3"  
SEE TABLE FOR MIN. "A" VALUES  
REQ'D. TO MEET MIN. CLEARANCE  
CRITERIA ABOVE.

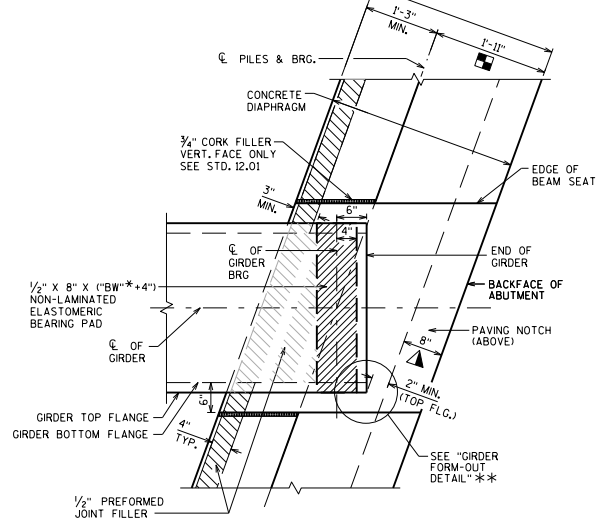


**GIRDER FORM-OUT  
DETAIL \*\***



**AT ABUTMENT**

ABUTMENT: TYPE "A1 SEMI-EXP." W/O PAVING NOTCH



**AT ABUTMENT**

ABUTMENT: TYPE "A1 SEMI-EXP." WITH PAVING NOTCH.

MIN. "A" DIMENSION IN INCHES FOR A3 ABUTMENTS WITH STEEL BEARINGS AS SHOWN ON STD. 27.09.  
 ■ "A" DIMENSION BASED ON BOTTOM FLANGE CLEARANCE IS CALCULATED USING 6" OFFSET FROM  $\bar{C}$  OF BRG. TO END OF GIRDER AND 3" MIN. OFFSET BETWEEN FLANGE AND BACKWALL TO ACCOMMODATE EXPANSION. IF CONDITIONS REQUIRE OFFSETS OTHER THAN THESE, THE "A" DIMENSION MUST BE CALCULATED. "A" DIMENSION BASED ON MASONRY PLATE CLEARANCE IS CALCULATED ASSUMING A 10" LONG PLATE. IF LONGER PLATE IS REQUIRED, RECALCULATE "A".

| SKEW ANGLE (DEG.) | GIRDER DEPTHS |         |         |         |         |         |         |         |         |         |
|-------------------|---------------|---------|---------|---------|---------|---------|---------|---------|---------|---------|
|                   | 28"           | 36"     | 36W"    | 45"     | 45W"    | 54"     | 54W"    | 70"     | 72W"    | 82W"    |
| 0-5               | 12"           | 12"     | 12"     | 12"     | 12"     | 12"     | 12"     | 12"     | 12"     | 12"     |
| > 5-15            | 12"           | 12"     | 13"     | 12"     | 13"     | 12.5"   | 13"     | 13"     | 13"     | 13"     |
| > 15-25           | 12.5"         | 12.5"   | 15"     | 13"     | 15"     | 14"     | 15"     | 15"     | 15"     | 15"     |
| > 25-35           | (14")         | (14")   | (17.5") | (15")   | (17.5") | (16.5") | (17.5") | 16.5"   | (17.5") | (17.5") |
| > 35-45           | (15.5")       | (15.5") | (20")   | (17")   | (20")   | (18.5") | (20")   | (18.5") | (20")   | (20")   |
| > 45-55           | (17")         | (17")   | (21.5") | (18.5") | (21.5") | (20")   | (21.5") | (20")   | (21.5") | (21.5") |

VALUES IN PARENTHESIS ARE CONTROLLED BY 2" CLR. CRITERIA AT EDGE OF MASONRY PLATE. VALUES MAY BE ADJUSTED IF MASONRY PLATE IS CLIPPED PER STANDARD 27.02.

**PRESTRESSED GIRDER FLANGE WIDTH TABLE**

| GIRDER DEPTH              | 28" | 36" | 36W" | 45" | 45W" | 54" | 54W" | 70" | 72W" | 82W" |
|---------------------------|-----|-----|------|-----|------|-----|------|-----|------|------|
| TOP FLANGE WIDTH          | 18" | 12" | 34"  | 16" | 34"  | 20" | 48"  | 30" | 48"  | 48"  |
| BOTTOM FLANGE WIDTH "BW"* | 18" | 18" | 30"  | 22" | 30"  | 26" | 30"  | 26" | 30"  | 30"  |

**DESIGNER NOTES**

SEE PRESTRESSED GIRDER DETAILS FOR ADDITIONAL INFORMATION. BEARING PAD DETAILS FOR 45W" GIRDER SHOWN ON THIS SHEET. DETAILS FOR OTHER GIRDERS TYPES SIMILAR.  
 \*\*WHEN NEEDED, FORM-OUT TOP FLANGE ON 36W", 45W", 54W", 70", 72W" & 82W" PRESTRESSED GIRDERS TO MEET MIN. CLR. REQ'D (SEE STD. 19.34, 19.35 OR 28.03). BOTTOM FLANGE FORM-OUT NOT ALLOWED.

**BEARING PAD DETAILS FOR PRESTRESSED CONCRETE GIRDERS**

**BUREAU OF STRUCTURES**

APPROVED: Bill Oliva DATE: 1-20