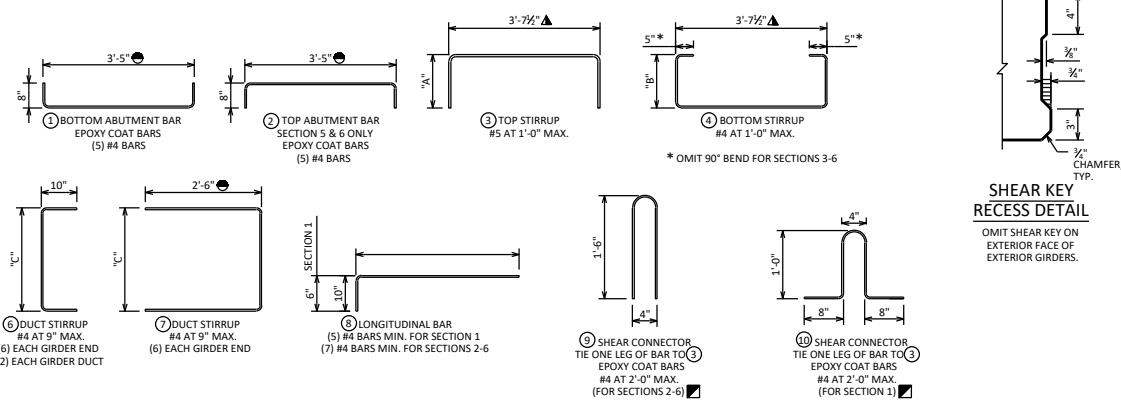


4'-0" SECTIONS

REBAR DIMENSION

| SECT. DEPTH | SECT. NO. | "A" | "B" | "C" |
|-------------|-----------|--------|--------|--------|
| 1'-0" | 1 | 7 1/2" | 7 1/2" | 6" |
| 1'-5" | 2 | 9" | 1'-1" | 10" |
| 1'-9" | 3 | 1'-3" | 1'-5" | 1'-2" |
| 2'-3" | 4 | 1'-3" | 1'-11" | 1'-8" |
| 2'-9" | 5 | 1'-3" | 2'-5" | 2'-2" |
| 3'-6" | 6 | 1'-3" | 3'-2" | 2'-11" |



DESIGNER NOTE
SEE STANDARD 19.50 FOR NOTES, DESIGNER NOTES, MATERIAL PROPERTIES.

- LEGEND**
- DIMENSION GIVEN FOR A POST-TENSIONING DUCT 1'-10" FROM END OF PRESTRESSED BOX GIRDER.
 - ▲ DIMENSION GIVEN FOR STIRRUPS PERPENDICULAR TO THE PRESTRESSED BOX GIRDER LENGTH. ADJUST THE DIMENSION FOR STIRRUPS AT SKEWED PRESTRESSED BOX GIRDER ENDS.
 - ⊙ SHOW SPACING FOR THESE STRANDS ONLY IF REQUIRED BY DESIGN.
 - SUBSTITUTE ⊕ BAR ON EXTERIOR EDGE OF EXTERIOR GIRDERS. SEE STANDARD 19.56.

4'-0" PRESTRESSED BOX GIRDER SECTIONS

BUREAU OF STRUCTURES

APPROVED: *Laura Shadewald* DATE: 1-18

STANDARD 19.51