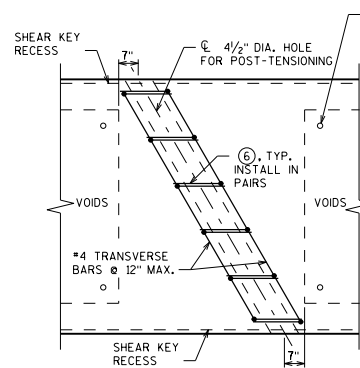
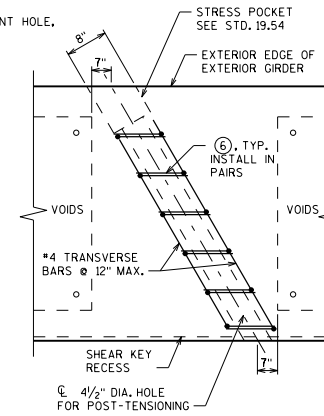


PART GIRDER PLAN WITH SKEW

①, ② & #4 TRANSVERSE BARS NOT SHOWN FOR CLARITY



INTERIOR GIRDER DUCT PLAN



EXTERIOR GIRDER DUCT PLAN

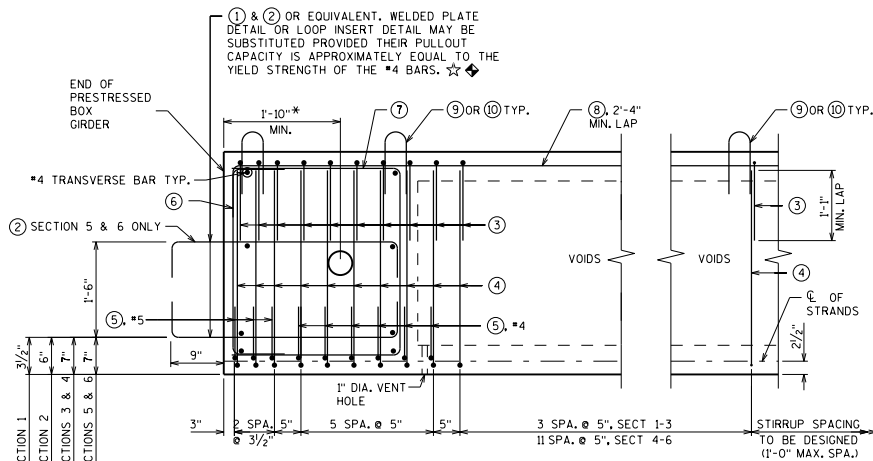
LEGEND

- ☆ BARS NOT REQUIRED WHEN USED ON GRS ABUTMENTS.
- ◆ BARS PLACED PARALLEL TO GIRDERS. SPACING IS PERPENDICULAR TO THE \bar{C} OF THE GIRDERS.
- * WHEN WINGS ARE PARALLEL TO ABUTMENT \bar{C} , USE DIMENSIONS TO ALLOW FOR EASE OF POST-TENSIONING OPERATION.
- ** PLACE AT 5" MAX. SPACING UNTIL PERPENDICULAR TO THE \bar{C} OF THE GIRDER.
- *** PLACE ALONG SKEW FROM END OF PRESTRESSED BOX GIRDER UNTIL ALL END BLOCK BOTTOM STIRRUP BARS, ⑤, ARE PLACED.

DESIGNER NOTES

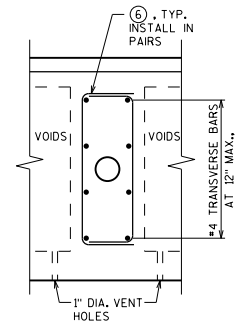
FOR BAR BEND DETAILS, SEE STANDARD 19.50 AND STANDARD 19.51

FOR SKEWED STRUCTURES CAST END OF PRESTRESSED BOX GIRDER ALONG SKEW.

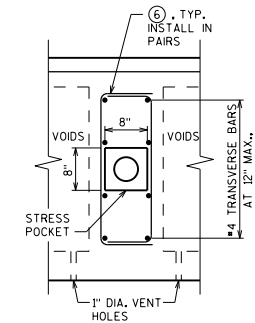


PART GIRDER ELEVATION SHOWING 0° SKEW

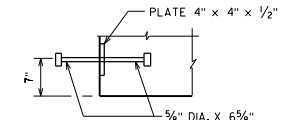
PLACE #4 TRANSVERSE BARS AS SHOWN ALONG SKEW



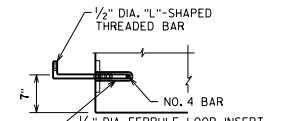
INTERIOR GIRDER DUCT ELEVATION



EXTERIOR GIRDER DUCT ELEVATION



WELDED PLATE DETAIL
(EQUIVALENT TO ONE #4 BAR)



LOOP INSERT DETAIL

PRESTRESSED BOX GIRDER DETAILS 1



BUREAU OF STRUCTURES

APPROVED: Bill Oliva DATE: 1-17