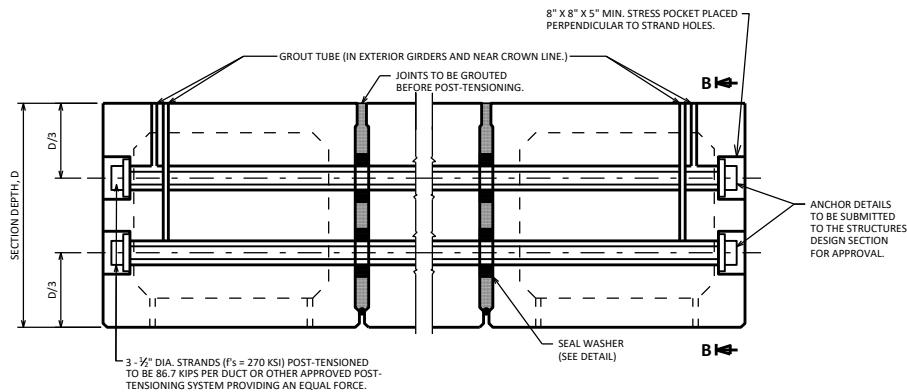
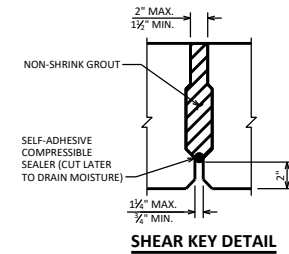
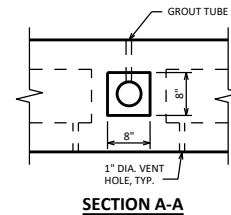


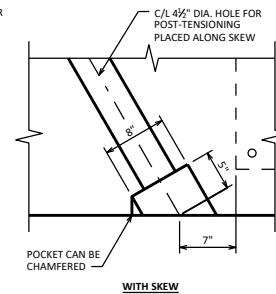
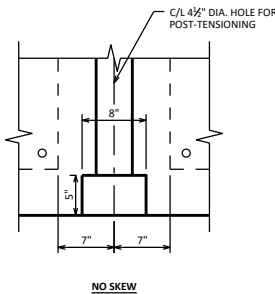
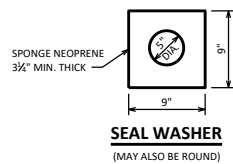
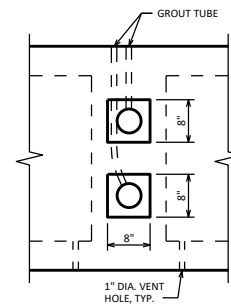
**POST-TENSIONING DETAILS - ONE DUCT PER DIAPHRAGM**


(SECTIONS 1 THROUGH 4)



**POST-TENSIONING DETAILS - TWO DUCTS PER DIAPHRAGM**

(SECTIONS 5 AND 6)



<b>PRESTRESSED BOX GIRDER DETAILS 3</b>	
 <b>BUREAU OF STRUCTURES</b>	
APPROVED: <i>Laura Shadewald</i>	DATE: 1-18