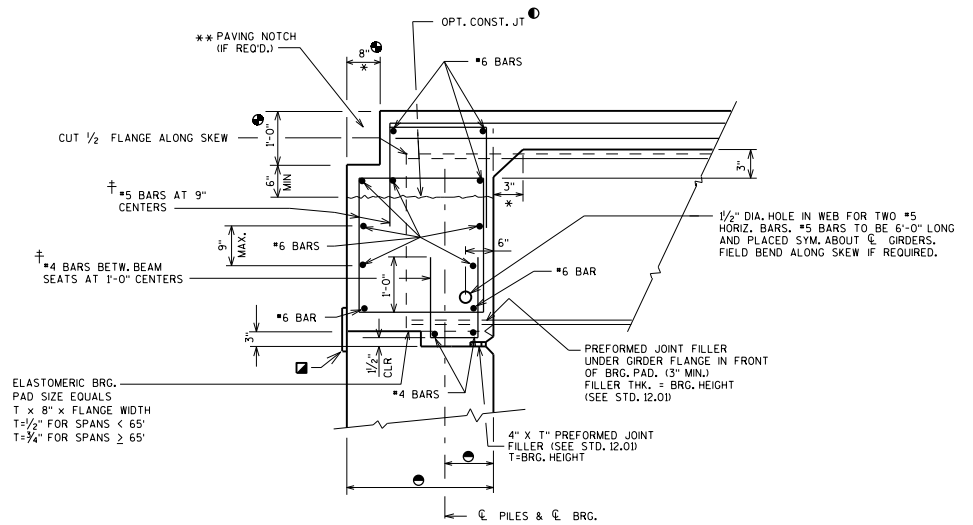
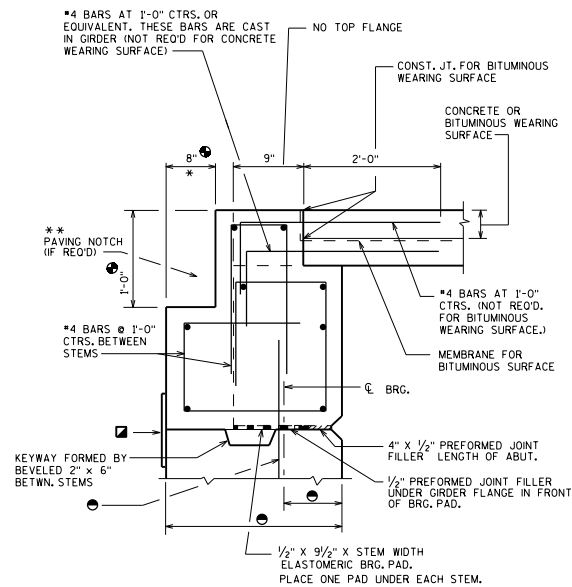


**STEEL GIRDER WITH  
FIXED SEAT**



**STEEL GIRDER WITH  
SEMI-EXPANSION SEAT**



**PRECAST DOUBLE TEE OR  
MULTI-STEM SECTION**

**NOTES**

FOR SKEWED STRUCTURES CAST END OF PRECAST TEE ALONG SKEW.

\* DIMENSION IS TAKEN NORMAL TO  $\phi$  SUBSTRUCTURE UNITS.

▣ 1'-6" RUBBERIZED MEMBRANE WATERPROOFING

† BARS PLACED PARALLEL TO GIRDERS. SPACING PERPENDICULAR TO  $\phi$  GIRDERS.

**DESIGNER NOTES**

SEE STANDARD 19.55 FOR PRESTRESSED BOX GIRDER BEARING DETAILS.

① THE USE OF THIS OPT. CONST. JOINT IS NOT RECOMMENDED FOR SKEWS OVER 15° WHEN LARGE DEADLOAD END ROTATION IS ANTICIPATED.

\*\* USE PAVING NOTCH ON ALL U.S.H. BRIDGES, S.T.H. BRIDGES, I.H. BRIDGES & ON C.T.H. BRIDGES WITH CONCRETE APPROACHES.

② PAVING NOTCH IS 1'-0" WIDE BY 1'-4" DEEP IF STRUCTURAL APPROACH SLAB (STD. 12.10) IS USED.

③ SEE STD. 12.01

**BRG. DETAILS FOR STEEL  
GDRS. AND PRECAST  
UNITS ON A1 ABUTMENTS**



**BUREAU OF  
STRUCTURES**

APPROVED: Bill Oliva DATE: 7-18