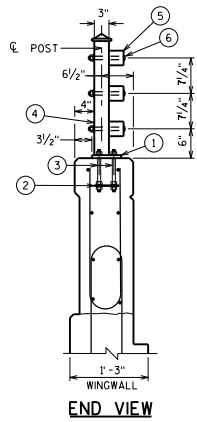


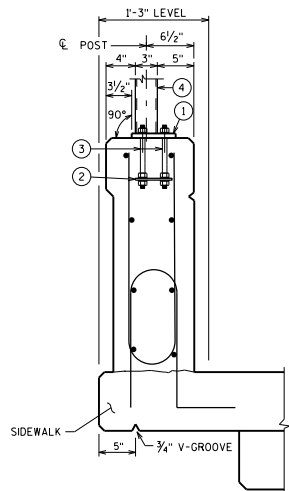
STRIP SEAL EXP. JT. @ ABUT.  
 (EXP. JT. DETAIL AT PIER IS SIMILAR)  
 FOR TYPE A1 ABUT., USE 1/2" FILLER  
 TO TOP OF PARAPET. SEE STD. 12.01/12.02

**INSIDE ELEVATION**

OPTIONAL CONSTRUCTION JOINTS IN THE PARAPETS MAY BE USED.  
 RUN BAR REINF. THRU THE JOINT, LAP LONGIT. BARS A MIN. OF 1'-9".  
 MIN. JOINT SPACING OF 80'-0". DEFINE CONSTR. JT. WITH A 3/4" V-GROOVE.

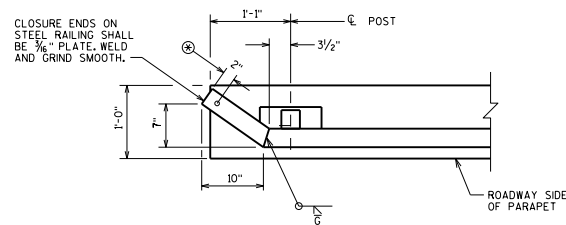


**END VIEW**



**SECTION THRU PARAPET ON BRIDGE**

\*ADJUST LOCATIONS OF BARS TO ALLOW  
 PLACEMENT OF ANCHOR ASSEMBLY FOR  
 RAILING AND BEAM GUARD.




**END POST DETAIL**

⊕ 3/4" DIA. DRAIN HOLE IN  
 BOTTOM OF ALL TUBES.

**DESIGNER NOTES**

- SEE STANDARD 30.09 FOR ADDITIONAL RAILING DETAILS
- SEE STANDARD 30.07 FOR:
  - DEFLECTION JOINT DETAILS AND NOTES
  - BEAM GUARD ANCHOR ASSEMBLY DETAILS
  - SIDEWALK REINFORCEMENT AND DETAILS
  - PARAPET REINFORCING BAR SIZE AND SPACING

STEEL RAILING WEIGHT = 25 LB/FT  
 BASED ON 6'-3" POST SPA.

COMBINATION RAILING TYPE '3T'	
	<b>BUREAU OF STRUCTURES</b>
APPROVED: <u>Bill Oliva</u>	DATE: 1-19