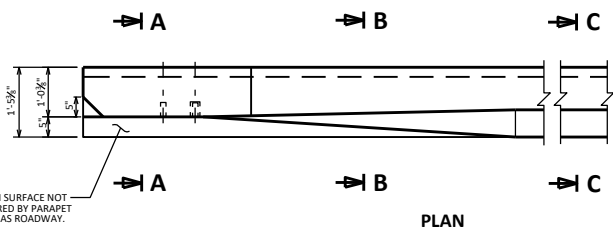
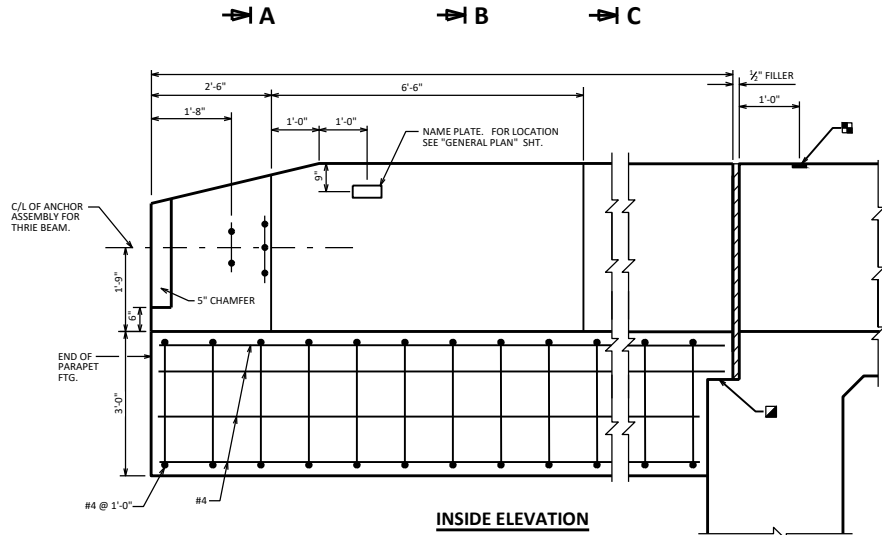
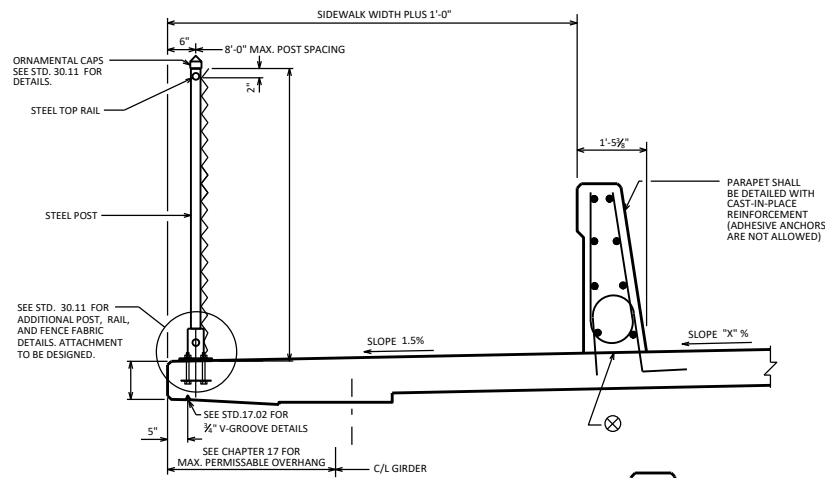
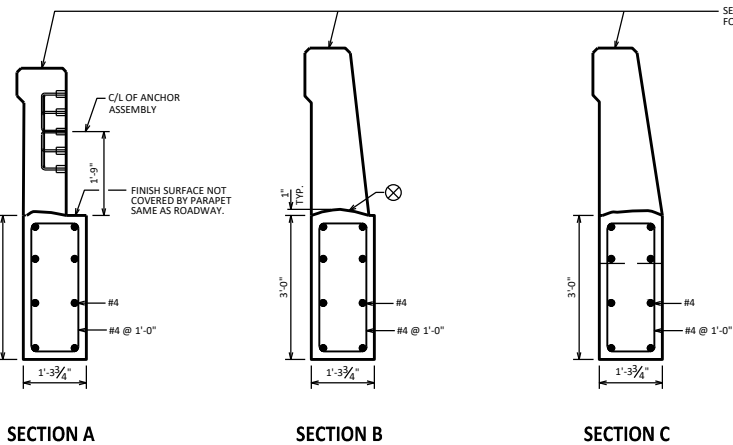


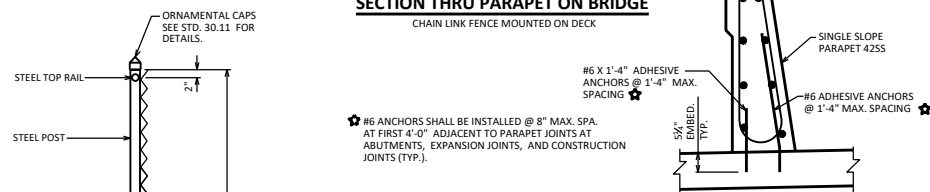
■ BENCHMARK (WHEN SUPPLIED), AVOID PLACING BELOW A RAIL OR FENCE SYSTEM THAT IS ATTACHED TO THE TOP OF THE PARAPET.



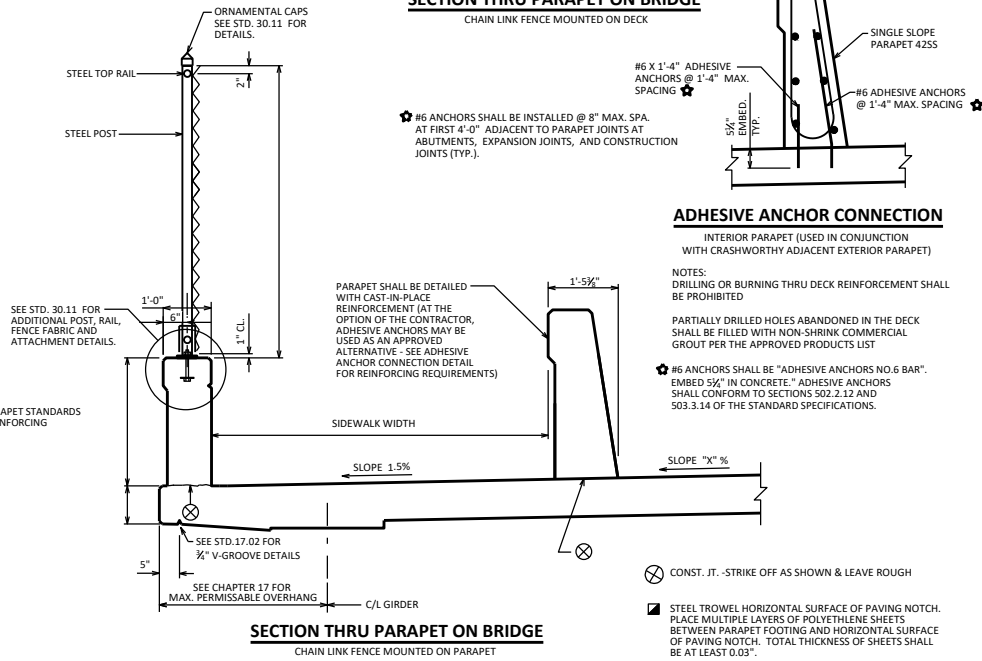
FINISH SURFACE NOT COVERED BY PARAPET SAME AS ROADWAY.



SECTION THRU PARAPET ON BRIDGE
CHAIN LINK FENCE MOUNTED ON DECK



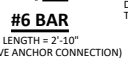
ADHESIVE ANCHOR CONNECTION



SECTION THRU PARAPET ON BRIDGE
CHAIN LINK FENCE MOUNTED ON PARAPET


DESIGNER NOTES

*4255' PARAPET SHOWN IN THIS STANDARD. FOR DETAILS, INCLUDING REINFORCING, SEE STANDARD 30.32.
ALL PARAPET FOOTING BARS SHALL BE EPOXY COATED.
DO NOT SHOW THE ADHESIVE ANCHOR CONNECTION DETAIL ON THE PLAN. THE CONTRACTOR MAY REQUEST THIS DETAIL IF DESIRED.



NOTES:
DRILLING OR BURNING THRU DECK REINFORCEMENT SHALL BE PROHIBITED
PARTIALLY DRILLED HOLES ABANDONED IN THE DECK SHALL BE FILLED WITH NON-SHRINK COMMERCIAL GROUT PER THE APPROVED PRODUCTS LIST
*#6 ANCHORS SHALL BE "ADHESIVE ANCHORS NO. 6 BAR". EMBED 5/8" IN CONCRETE. ADHESIVE ANCHORS SHALL CONFORM TO SECTIONS 502.2.12 AND 503.3.14 OF THE STANDARD SPECIFICATIONS.

■ STEEL TROWEL HORIZONTAL SURFACE OF PAVING NOTCH. PLACE MULTIPLE LAYERS OF POLYETHYLENE SHEETS BETWEEN PARAPET FOOTING AND HORIZONTAL SURFACE OF PAVING NOTCH. TOTAL THICKNESS OF SHEETS SHALL BE AT LEAST 0.03".

PARAPET FOOTING	
 BUREAU OF STRUCTURES	
APPROVED: <i>Laura Shadewald</i>	DATE: 1-23