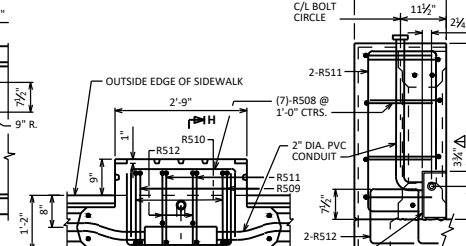
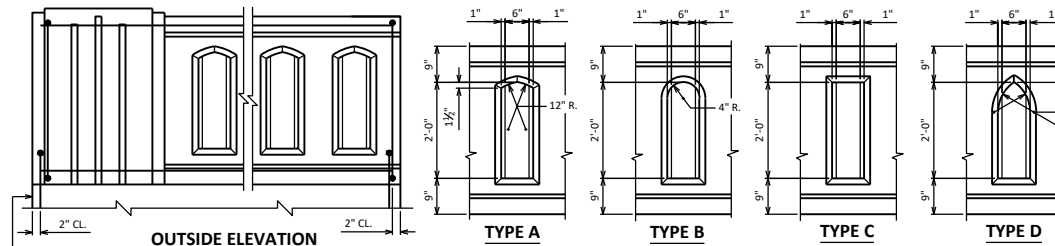
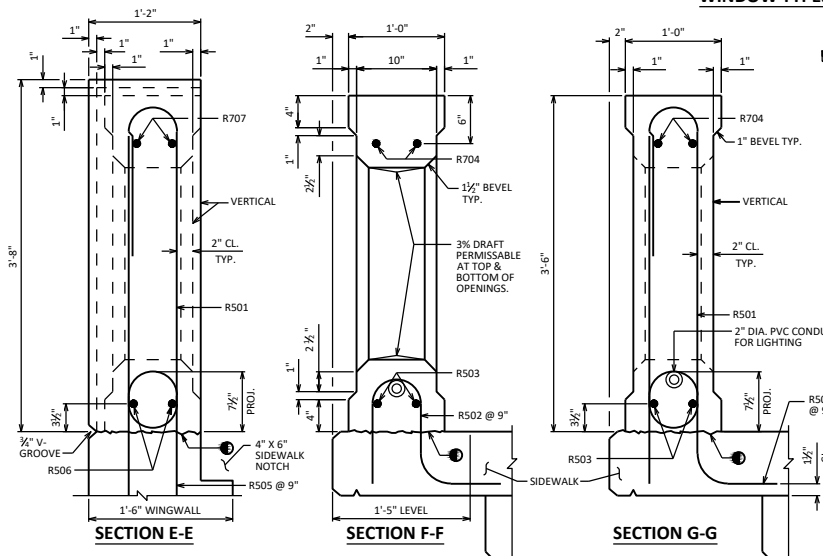


- ① NUMBER OF WINDOWS SHALL BE EQUAL.
- ② NUMBER OF WINDOWS SHALL NOT BE LESS THAN THE WINDOW IN ①. SPAN PILASTERS MAY BE SPACED AT 1/5 POINTS IN LONG SPANS.
- ③ DIMENSION SHALL BE THE SAME FOR ALL POSTS ADJACENT TO SPAN PILASTERS IN A SPAN. DIMENSION MAY VARY FROM SPAN TO SPAN. MIN. = 3", MAX. = 7 1/2"

NOTES
 BID ITEM SHALL BE "PARAPET CONCRETE TYPE 'TX'", WHICH SHALL INCLUDE ALL ITEMS SHOWN.
 WHEN PARAPETS ARE POURED CONTINUOUSLY FROM END TO END, THEY SHALL BE SEPARATED AT THE DEFLECTION JOINTS BY A PIECE OF 1/2" ZINC OR PLASTIC PLATE CUT AS SHOWN ON STANDARD 30.07. IF CONSTRUCTION JOINTS IN PARAPETS ARE USED AT THE DEFLECTION JOINTS, ONE SIDE OF JOINT SHALL BE COATED WITH BITUMINOUS PAINT AND PLATE SEPARATORS MAY BE OMITTED.

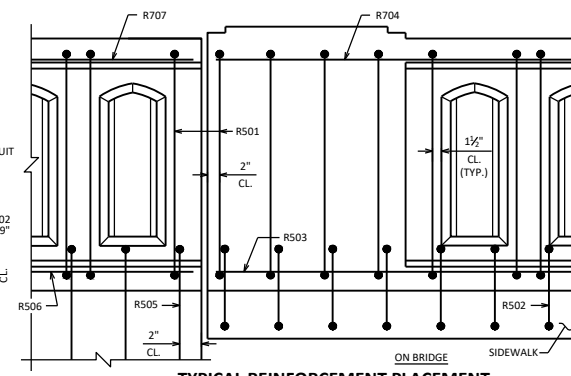


- SEE STD. 30.07 FOR:
 - DEFLECTION JOINT DETAILS
 - ANCHOR ASSEMBLY DETAILS
 - SIDEWALK REINFORCEMENT AND DETAILS
- ▲ LOCATION OF CONDUIT IS MEASURED FROM OUTSIDE EDGE OF JUNCTION BOX.
- ▲ VALUE APPLIES TO PIER PILASTER ALSO.
- CONST. JOINT - STRIKE OFF AS SHOWN AND LEAVE ROUGH.
- * WHEN BEAM GUARD ATTACHMENT IS NOT REQ'D, BUT NAME PLATE IS PRESENT, USE RUSTICATIONS AS SHOWN. (AT ENDS W/O NAME PLATE AND BEAM GUARD ATTACHMENT USE RUSTICATION DETAILS AS SHOWN FOR ABUTMENT PILASTER).



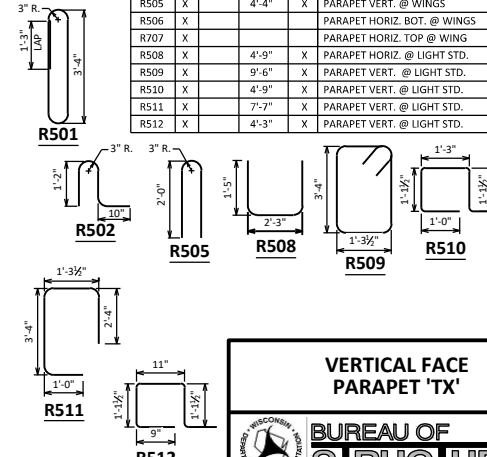
■ BENCHMARK (WHEN SUPPLIED). AVOID PLACING BELOW A RAIL OR FENCE SYSTEM THAT IS ATTACHED TO THE TOP OF THE PARAPET.

LIGHT STANDARD
 SEE STANDARD 30.14 FOR ANCHORAGE DETAILS.
 SEE STANDARD 30.21 AND 30.22 FOR CONDUIT DETAILS AND NOTES
 WEIGHT = 350 LB/FT (EXCLUDING PILASTERS.)



BILL OF MATERIALS

BAR MARK	CON'T	NO. REQ'D	LENGTH	BEHT	LOCATION
R501	X		8'-6"	X	PARAPET VERT.
R502	X		3'-4"	X	PARAPET VERT.
R503	X				PARAPET HORIZ. BOT.
R704	X				PARAPET HORIZ. TOP
R505	X		4'-4"	X	PARAPET VERT. @ WINGS
R506	X				PARAPET HORIZ. BOT. @ WINGS
R707	X				PARAPET HORIZ. TOP @ WING
R508	X		4'-9"	X	PARAPET HORIZ. @ LIGHT STD.
R509	X		9'-6"	X	PARAPET VERT. @ LIGHT STD.
R510	X		4'-9"	X	PARAPET VERT. @ LIGHT STD.
R511	X		7'-7"	X	PARAPET VERT. @ LIGHT STD.
R512	X		4'-3"	X	PARAPET VERT. @ LIGHT STD.



VERTICAL FACE PARAPET 'TX'

BUREAU OF STRUCTURES

APPROVED: *Laura Shadewald* DATE: 7-19