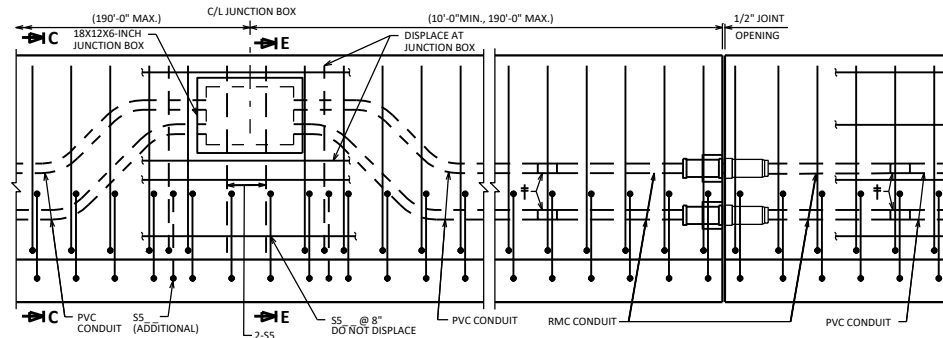
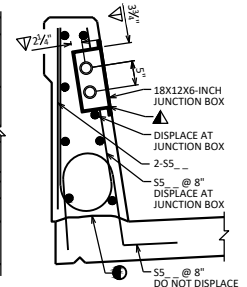


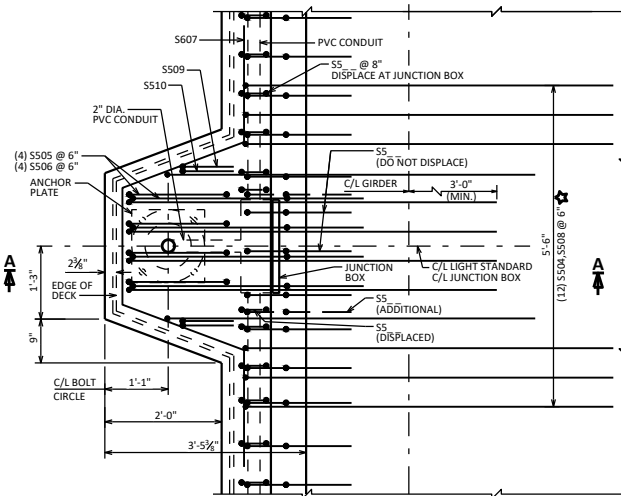
SECTION C-C



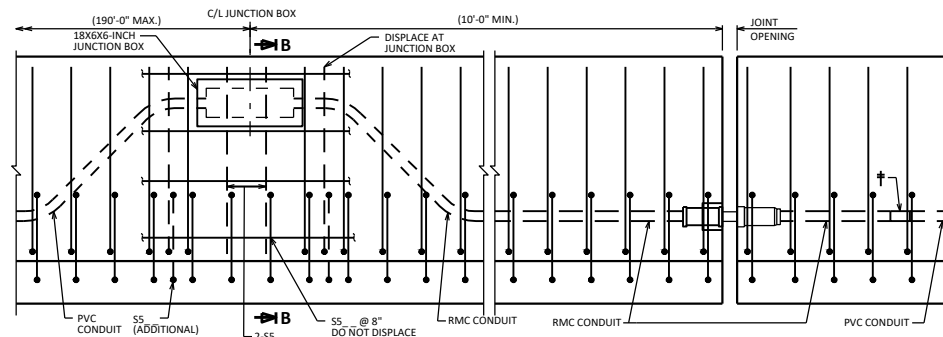
INSIDE ELEVATION AT JUNCTION BOX AT SEMI-EXP. JOINT
(DECK STEEL NOT SHOWN FOR CLARITY)



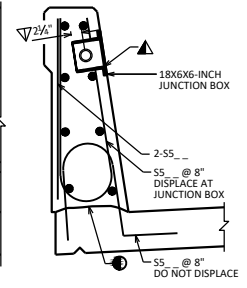
SECTION E-E



PLAN AT LIGHT STANDARD
(DECK STEEL NOT SHOWN FOR CLARITY)



INSIDE ELEVATION AT JUNCTION BOX AT EXP. JOINT
(DECK STEEL NOT SHOWN FOR CLARITY)



SECTION B-B

DESIGNER NOTES

THIS STANDARD ACCOMMODATES ELECTRICAL SERVICE TO LIGHTS STANDARDS MOUNTED ON STRUCTURES. ADDITIONAL REQUIREMENTS MAY BE REQUIRED FOR OTHER SYSTEMS. SEE BRIDGE MANUAL SECTION 32.6 FOR ADDITIONAL INFORMATION.

POSSIBLE BID ITEMS:
 "JUNCTION BOXES 18X12X6-INCH", EACH
 "JUNCTION BOXES 18X6X6-INCH", EACH
 "CONDUIT RIGID NONMETALLIC SCHEDULE 40 2-INCH"
 "CONDUIT RIGID METALLIC 2-INCH"
 "ANCHOR ASSEMBLIES LIGHT POLES ON STRUCTURE"

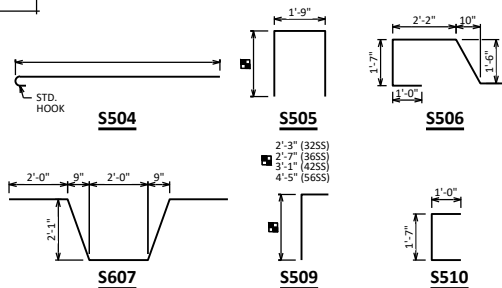
SEE STD. 30.14 FOR ANCHORAGE DETAIL AND LIMITATIONS.
 SEE STD. 30.22 FOR CONDUIT DETAILS AND NOTES.

THIS STANDARD ACCOMMODATES A MAXIMUM 15" DIA. BOLT HOLE CIRCLE AND A MAXIMUM 15" X 15" SQUARE ANCHOR PLATE WITH (4) 1" DIA. ANCHOR BOLTS. THIS STANDARD IS BASED ON A 8" MIN. DECK THICKNESS AND A MAXIMUM OVERHANG OF 3'-7" FROM C/L GIRDER TO EDGE OF DECK.

★ THESE BARS ARE IN ADDITION TO STANDARD TRANSVERSE BARS IN DECK. FOR CONC. SLAB STRUCTURES, REPLACE S504 & S508 BARS W/ S404 BARS @ 6" SPA. (W/O HOOK @ ENDS, 5'-6" LONG).

CONDUIT REQUIREMENTS:
 • USE (1) - 2" DIA. CONDUIT TO PROVIDE ELECTRICAL SERVICE TO LIGHTS MOUNTED ON TOP OF THE PARAPET.
 • USE (2) - 2" DIA. CONDUITS IF AN ADDITIONAL ELECTRICAL SERVICE IS REQUIRED.

JUNCTION BOX REQUIREMENTS:
 • USE A JUNCTION BOX TO KEEP A CONTINUOUS RUN OF CONDUIT (PULL LENGTH) TO A MAXIMUM OF 190 FT.
 • USE A 18" X 6" X 6" JUNCTION BOX WHEN (1) - 2" DIA. CONDUIT IS USED.
 • USE A 18" X 12" X 6" JUNCTION BOX WHEN (2) - 2" DIA. CONDUITS ARE USED.
 • USE A 18" X 12" X 6" JUNCTION BOX AT EACH LIGHT STANDARD (CENTERED ON LIGHT C/L).
 • USE A JUNCTION BOX AT EACH EXPANSION JOINT. LOCATE 10'-0" MINIMUM FROM EACH EXPANSION JOINT. (NOT REQUIRED AT SEMI-EXP. OR FIXED JOINTS)



BILL OF BARS

BAR MARK	CO.	NO. REQ'D.	3255	3655	4255	5655	BE/IT	LOCATION
S504	X						X	LIGHT STD. - TRANS. - DECK - TOP
S505	X		6'-0"	6'-8"	7'-8"	10'-0"	X	LIGHT STD. - VERT. - PARAPET
S506	X		7'-0"	7'-0"	7'-0"	7'-0"	X	LIGHT STD. - VERT. - PARAPET
S607	X		10'-0"	10'-0"	10'-0"	10'-0"	X	LIGHT STD. - HORIZ. - PARAPET
S508	X						X	LIGHT STD. - TRANS. - DECK - BOT.
S509	X		3'-2"	3'-6"	4'-0"	5'-4"	X	LIGHT STD. - VERT. - PARAPET
S510	X		3'-4"	3'-4"	3'-4"	3'-4"	X	LIGHT STD. - VERT. - PARAPET

LEGEND

- CONSTRUCTION JOINT, STRIKE OFF AS SHOWN.
 - ▲ CUT OUT ± 1" OF GASKET AT BOTTOM OF JUNCTION BOX COVER TO ALLOW FOR DRAINAGE.
 - ▽ LOCATION OF CONDUIT IS MEASURED FROM OUTSIDE EDGE OF JUNCTION BOX.
 - † NONMETALLIC CONDUIT TO METALLIC CONDUIT ADAPTER FITTING (UL OR NRTL LISTED FOR ELECTRICAL USE SHALL BE USED).
- PVC = POLYVINYL CHLORIDE (RIGID NONMETALLIC) CONDUIT
 RMC = RIGID METALLIC CONDUIT

LIGHT STANDARD AND JUNCTION BOX FOR PARAPETS

BUREAU OF STRUCTURES

DATE: 7-18

APPROVED: *Laura Shadewald*