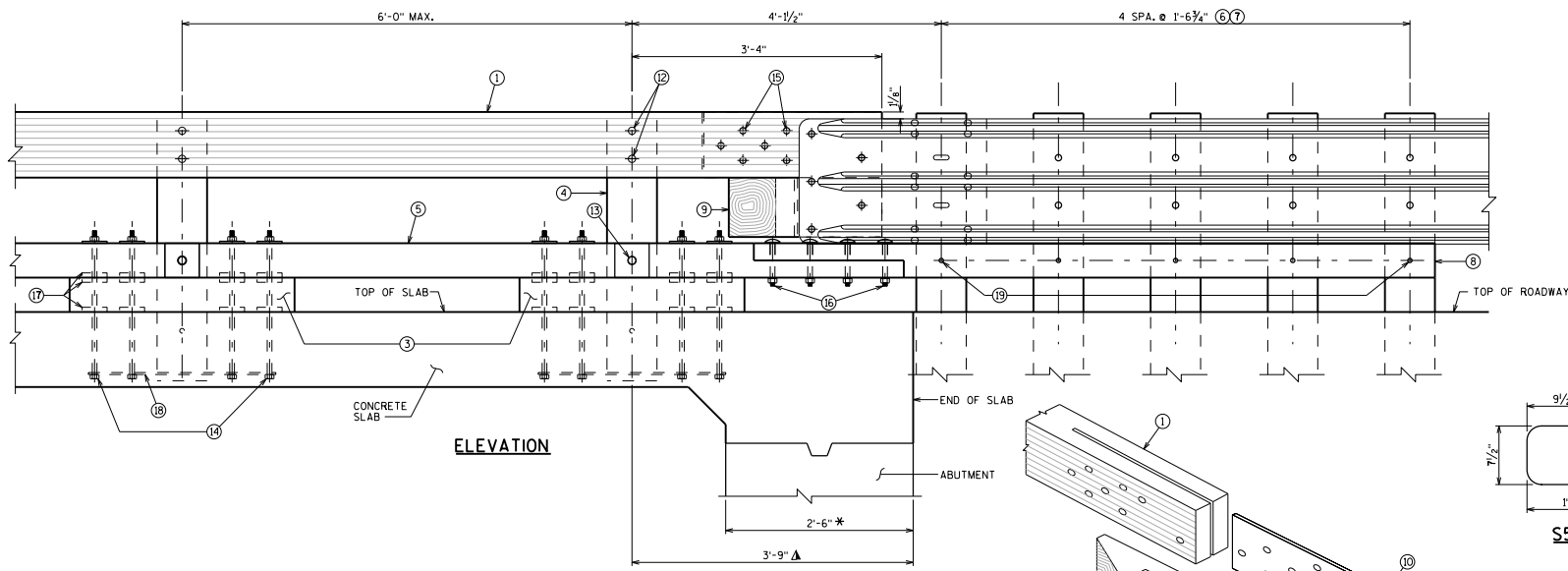
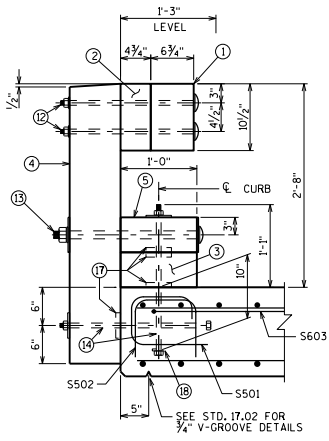


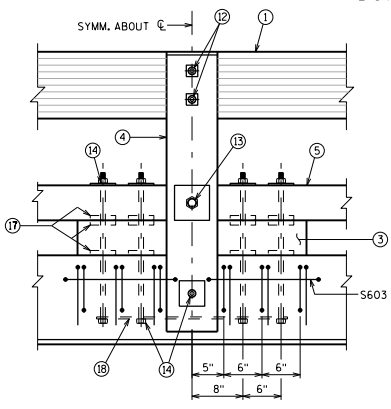
**PLAN**



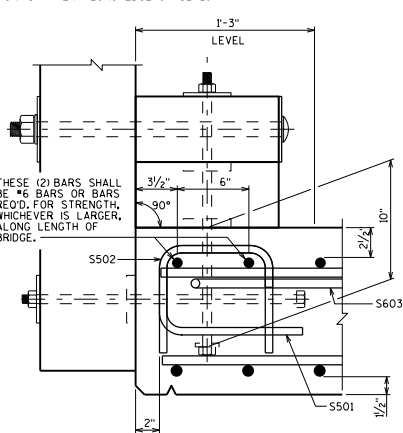
**ELEVATION**



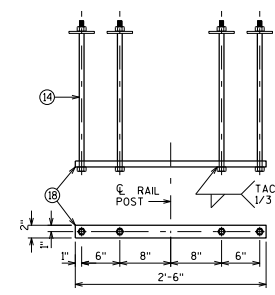
**SECTION THRU RAIL**  
ALSO SEE "EDGE OF SLAB DETAILS"



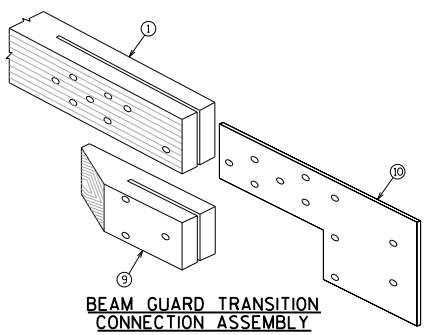
**BACK ELEVATION**



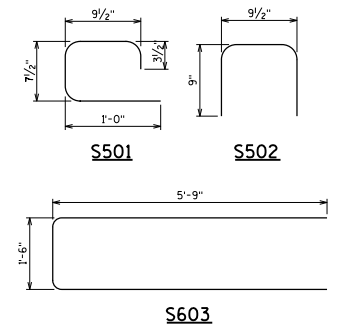
**EDGE OF SLAB DETAILS**



**ANCHORAGE DETAIL**



**BEAM GUARD TRANSITION CONNECTION ASSEMBLY**



\* DIMENSION IS TAKEN NORMAL TO C SUBSTRUCTURE.  
▲ DIMENSION IS TAKEN ALONG EDGE OF SLAB.

THESE (2) BARS SHALL BE #6 BARS OR BARS REQ'D. FOR STRENGTH, WHICHEVER IS LARGER, ALONG LENGTH OF BRIDGE.

**BILL OF BARS** NOTE: THE FIRST DIGIT OF THE BAR MARK SIGNIFIES THE BAR SIZE.

| BAR MARK | CO. REQ'D. | NO. REQ'D. | LENGTH | SPACING | LOCATION             |
|----------|------------|------------|--------|---------|----------------------|
| S501     | X          | 2-4        | X      |         | RAIL POST VERTICAL   |
| S502     | X          | 2-1        | X      |         | RAIL POST VERTICAL   |
| S603     | X          | 12-9       | X      |         | RAIL POST HORIZONTAL |

SEE STANDARD 30.25 FOR RAILING DETAILS

**TIMBER RAILING ATTACHED TO CONCRETE SLAB**



APPROVED: Scot Becker DATE: 7-11