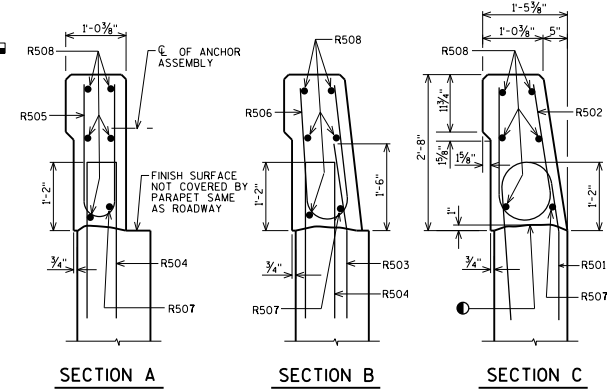


INSIDE ELEVATION

◆ ROADWAY OPENING OR 2 1/2" MIN. FOR EXPANSION JOINT. USE 1/2" OPENING WITH FILLER FOR AT ABUTMENTS

■ BENCHMARK (WHEN SUPPLIED), AVOID PLACING BELOW A RAIL OR FENCE SYSTEM THAT IS ATTACHED TO THE TOP OF THE PARAPET.

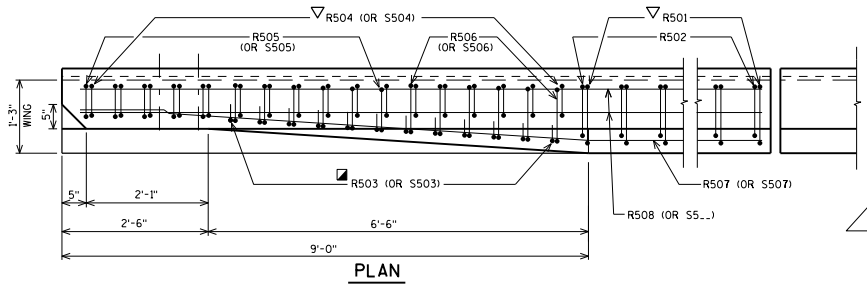
NOTE: FOR SECTIONS A, B & C ONLY THE PARAPET TERMINATING ON A WING IS SHOWN. TERMINATION ON A DECK IS SIMILAR.



BILL OF BARS

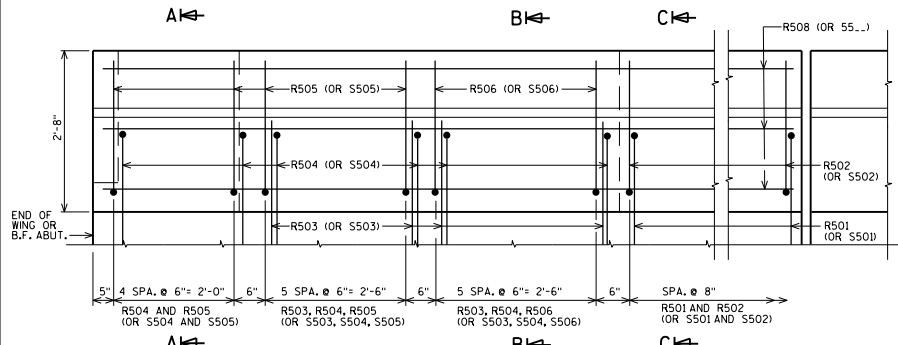
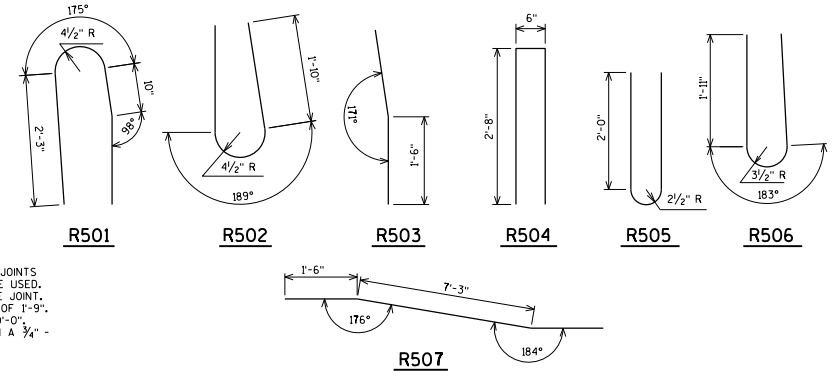
FOR ABUTMENT PARAPETS

BAR MARK	COUNT	ABUT.	ABUT.	LENGTH	BEY	LOCATION
R501	X			5-10	X	PARAPET-VERT.
R502	X			5-0	X	PARAPET-VERT.
R503	X			3-0	X	PARAPET-VERT.
R504	X			5-7	X	PARAPET-VERT.
R505	X			4-9	X	PARAPET-VERT.
R506	X			4-10	X	PARAPET-VERT.
R507	X				X	PARAPET-HORIZ.
R508	X					PARAPET-HORIZ.
S501	X			4-5	X	PARAPET-VERT.
S503	X			2-9	X	PARAPET-VERT.
S504	X			4-4	X	PARAPET-VERT.

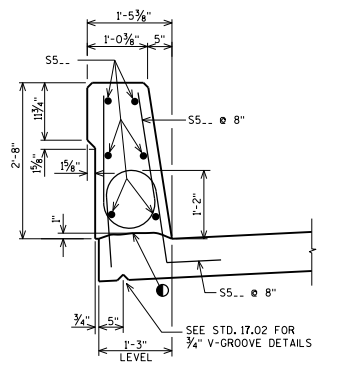


PLAN

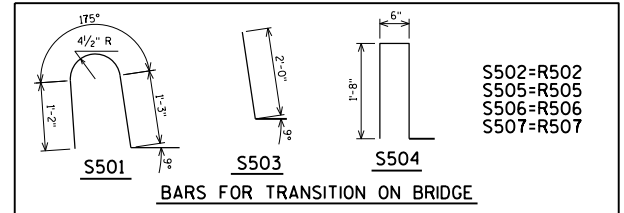
OPTIONAL CONSTRUCTION JOINTS IN THE PARAPETS MAY BE USED. RUN BAR REINF. THRU THE JOINT. LAP LONGIT. BARS A MIN. OF 1'-9". MIN. JOINT SPACING OF 80'-0". DEFINE CONST. JOINT WITH A 3/4" V-GROOVE.



OUTSIDE ELEVATION



SECTION THRU PARAPET ON BRIDGE



AREA = 3.09 SF
WEIGHT = 464 LB/FT

● CONST. JOINT - STRIKE OFF AS SHOWN.

■ R503 BARS MAY BE PLACED AFTER CONCRETE IS POURED BUT BEFORE INITIAL SET HAS TAKEN PLACE. USE CARE TO PLACE R503 OR S503 BARS CORRECTLY ALONG TRANSITION OF PARAPET.

▽ R501 AND R504 BARS TO BE TIED TO WING STEEL BEFORE WING IS POURED. DESIGNER MAY ELECT TO USE A R501 BAR IN LIEU OF A S501 BAR ADJACENT TO THE PAVING NOTCH ON TYPE AT ABUTMENTS.

SINGLE SLOPE PARAPET 32SS



APPROVED: Bill Oliva DATE: 7-19